

LADIES' NIGHT FEAST JUNE 24

Annual Banquet And Election Will Be Held At First Baptist Church

The annual "Ladies Night Banquet" of the Birmingham Baptist Community Brotherhood...

Raymond Peck as President of the Brotherhood will preside and serve as toastmaster.

Now is the time to save money on your renewal subscription.

BOOK REVIEWS

By SALLY KNOX "GOLDEN DAWN." by Peter B. Kyne, Cosmopolitan Book Corp. publishers.

A book without artistry, without style, without entertainment value would hardly seem worth the effort of reading it.

"Golden Dawn," is a psychological thesis, illuminated with absurd adventures and rather uninteresting romance.

The best sentence in the whole book is the first: "Mr. Theodore Gattin's married life had demonstrated to him the absolute fallacy of the ecclesiastical contention that marriages are made in heaven."

unfortunate tendency towards shoplifting and getting in and out of jail; the other, the cultured girl of wealth, sweet, retiring, and modest.

THE PAINTED MIXX. By Robert W. Chambers. D. Appleton & Co., publishers.

Fortunately, in most parts of the United States, man can choose what he reads.

WELL, here's how most of it goes: "Excitement and apprehension still boozed me up; keen after Gattin's married life had demonstrated to him the absolute fallacy of the ecclesiastical contention that marriages are made in heaven."

"And she? Did she really dread me so much that she condescended to bargain with me for her love? I had seen her tear fall upon Sir Wilm's letter."

TRAFFIC LAW AGAIN DELAYED

Debate Over Speed Limit Brings Further Postponement Of Ordinance

Adoption of the new village traffic ordinance, under discussion for several months, was again delayed Monday night when Commissioner Robert E. Allen withdrew his motion for its adoption.

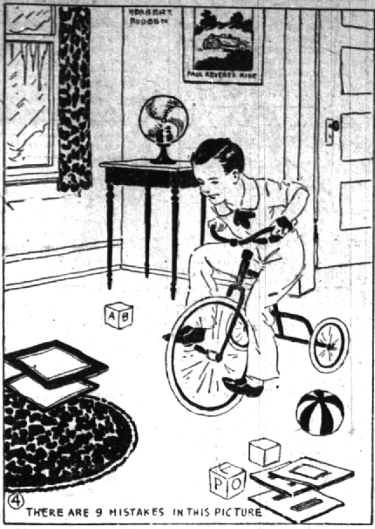
Commissioner Maurice Lowman, following Mr. Allen's resolution, declared that he had not discussed certain changes in the proposed ordinance with other members of the commission.

CHURCH PICNIC, JUNE 17

The Sunday School of the First Baptist Church will hold its annual picnic at Elizabeth Lake, Tuesday, June 17.

me so much that she condescended to bargain with me for her love? I had seen her tear fall upon Sir Wilm's letter.

WHAT'S WRONG AND WHERE?



List of mistakes will be found on page seven of this section.

NATIVE OF NOVI IS CANDIDATE

Harry M. Bogart, 211 East Louisiana street, Pontiac, today announced his candidacy for the office of county clerk at the primary elections next fall.

Co. of Oakland County, lived in Novi.

At the close of The Eccentric's "Everybody Wins Campaign" the subscription price in Oakland County is going to be raised from \$1.50 to \$2.00 per year.

SERVING MANY BUSINESSES Experience of large fleet owners reveals the unusual reliability and economy of the new Ford

A SIGNIFICANT TRIBUTE to the value of the new Ford is found in its increasing use by Federal, state and city governments.

Prominent among the companies using the Ford are the Associated Companies of the Bell System, Armour and Company, The Borden Company, Continental Baking Corporation, Firestone Tire and Rubber Company, General Electric Company, Goodyear Tire and Rubber Company, Kellogg Company, Knickerbocker Ice Company, Morton Salt Company, Pillsbury Flour Mills Company, The Procter and Gamble Company, and Swift & Company.

Each of these companies uses a large number of Ford cars and trucks. The Associated Companies of the Bell System use more than eight thousand.

Modern business moves at a fast pace and it needs the Ford. Daily, in countless ways and places, it helps to speed the production and delivery of the world's goods and extend the useful-service of men and companies.

Constant, steady operation over many thousands of miles emphasizes the advantages of the sound design of the Ford car, its high quality of materials, and

unusual accuracy in manufacturing. Beneath its graceful lines and beautiful contours there is a high degree of mechanical excellence.

An example of the value built into the Ford is the use of more than twenty ball and roller bearings. They are hidden within the car and you may never see them. Yet they play an important part in satisfactory, economical performance.

Throughout the Ford chassis, a ball or roller bearing is used at every place where it is needed to reduce friction and wear and give smooth, reliable mechanical operation.

At many points, as on the transmission counter-shaft, clutch release, fan and pump shaft, and front drive shaft, these ball and roller bearings are used where less costly types of bearings might be considered adequate.

Additional instances of the high quality built into the Ford are the extensive use of steel forgings, fully enclosed four-wheel brakes, Rustless Steel, four Houdaille double-acting hydraulic shock absorbers, aluminum pistons, chrome alloy alloy valves, torque-tube drive, three-quarter floating rear axle, and the Triplex shatter-proof glass windshield.

The Ford policy has always been to use the best possible material for each part and then, through large production, give it to the public at low cost.

Table with 2 columns: Model Name and Price. Includes Standard Coupe (\$495), Sport Coupe (\$525), Tudor Sedan (\$495), Three-window Fordor Sedan (\$600), Model A Sedan (\$640), Model A Truck Chassis (\$510), Model A Panel Delivery (\$700).

FORD MOTOR COMPANY

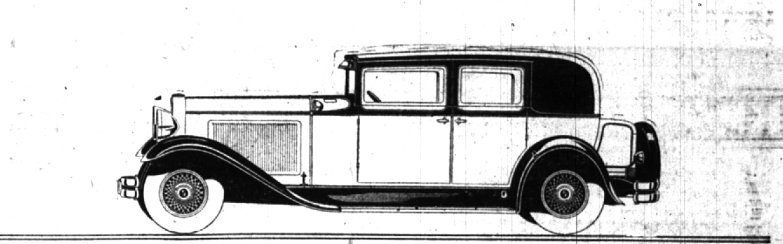


Movie Fashions



Dorothy Jordan wears a dainty morning frock of print with trimmings in harmonizing color.

BIRMINGHAM has a new Nash Dealer...



BIRMINGHAM has a new Nash Dealer... BELL BROS. SALES & SERVICE

NASH is now a neighbor of yours in Birmingham.

A new Nash dealer, Bell Bros. Sales & Service, is now located at 317 East Maple Avenue—ready to show you the Nash "400", the car that leads the leaders—ready to furnish to everyone who now owns a Nash and to everyone who buys one, the very finest kind of care and attention.

The men who are at the head of this new Nash organization, Messrs. Howard Bell and A. F. Bottrell, are qualified by long experience to consult with you and care for your car in the way you have always hoped to have it cared for.

And the Nash "400", which they now sponsor in Birmingham, is the kind of a car you've always wanted to own. It is a new type of motor car, built to the finest specifications ever laid down for motor car manufacture, by one of the

Now at \$895 STUDEBAKER offers you these 12 fine car features!

- No other car under \$1000 has more than 7 of them! 114-inch Wheelbase... 70-horsepower Engine... 111 P. to every 42.1 lbs. of Car... Counterweighted 68-lb. Crankshaft... Full-Power Muffler... Starter Button on Dash... Vibration Damper... Cam-and-Lever Steering Gear... Emergency Brakes on Four Wheels... Clutch Toroidal Damper... Double-Drop Frame... Pressure Fuel Pump...

You cannot match this Studebaker at the price—nor even approach it. Now can you find the counterpart of Studebaker's 7% year-old factory for manufacturing integrity. Here is a great and honest value—the handwork of the Builder of Champions. Here is a car which has proved its speed, and power and stamina in scores of tests throughout the land. Make a point of driving it—today!

Claude E. Mosher, Inc. Time in "Studebaker Champion" Sunday Evening 8:15 to 8:45 Central Standard Time Station WW and NBC Network.

Tell Your Merchant You Saw His Advertisement in THE ECCENTRIC

most capable builders in the motor car industry—C. W. Nash.

Most people expect the "400" to be higher priced when they consider "400" quality and performance. However, \$935 and up, f. o. b. the factory, buys one of these superior motor cars. Come in and see them.

Nash Features You Should Know

Centralized chassis lubrication, built-in, automatic radiator shutters, and the world's easiest steering in every model. Adjustable front seats. Steel spring covers with lifetime lubrication in the Twin-Ignition Eight and Twin-Ignition Six lines. The priceless protection at no extra cost of Duplate, non-shatterable plate glass in all doors, windows, and windshields through the Twin-Ignition Eight line. This glass is also available at slight extra cost in all other Nash cars.

Table with 3 columns: Model Name, Price Range, and Price. Includes Single Six (\$935 to \$1155), Twin-Ignition Six (\$1325 to \$1745), Twin-Ignition Eight (\$1675 to \$2385).

BELL BROS. SALES & SERVICE 314 EAST MAPLE AVENUE, BIRMINGHAM