

# HILL SCHOOL GIVEN SAFETY WORK PRIZES

### Teachers, Students Awarded Loving Cups For Education Efforts CUPS ARE PRESENTED

Hill school was distinguished in the last month of its year, the Monday when it received a large silver loving cup for the best work in safety education. The cup was won in competition with 2,100 other Michigan schools and was presented by H. O. Rounds, director of the Detroit Automobile club.

At the same time, a smaller silver loving cup was presented to the safety patrol of the school for its excellent work during the year. The patrol also received a hamper for regular and clear reports of the captain, Ray Clark. Members of the patrol besides Clark are Irving Jones, Linnetta, and Clifford McBride, Donald Fouraine, Ralph Hoofnagle, James Holah, Eugene Merz, Stuart Adams, Jack Montgomery, and Boecler Wilson.

The patrol was organized last year by Miss Lyla McCormick, sixth grade, and completed this month its first full year of work. Miss McCormick feels especially pleased that in its first year, the safety patrol of Hill school should win the highest state award. "We are glad," she said, "that in the last days of Hill school we have won these symbols of our spirit, which express worthy ideals for ourselves and helpfulness for others. At Barnum, we expect to carry on the work we can."

### Set Up Standards

The automobile club, which sponsors the school boy patrol system throughout southern Michigan, offered cups at the opening of the school term in the schools showing the best safety efforts during the year. They set up certain standards as an incentive to improve conditions on the streets and highways and to make them less dangerous to both the pedestrian and the motorist. In order to win the cup, the Hill patrol had to have a perfect year's record of sending in its monthly reports, by

### Wake Up Folks! Opportunity Is Calling You in The Birmingham Eccentric's 'Everybody Wins Campaign.'

A big beautiful new **STUDEBAKER** brougham, valued at \$1567.00 awaits the winner. **YOU CANNOT LOSE IF YOU WILL WORK.** 20% Cash Commission Guaranteed Active Non Prize Winners.

## The Bloomfield Forge

727 PURDY ST.  
**Ornamental Iron Works**  
Fireplace Fixtures Screens  
Audirons  
Ornamental Stair Railings  
Balcony Railings  
Lighting Fixtures of Brass  
Copper, Iron  
Floor Lamp Stands  
Curtain Rods  
**H. J. Busch, Jr.**  
PHONE 997

## FOR RENT

To be safe—and not sorry—rent through a Realtor. We have investigated him before giving him the right to use the name Realtor—and can recommend his ethics. And we always insist upon justice to the client. **It pays to consult a REALTOR**

a member of the BIRMINGHAM REAL ESTATE BOARD  
Robert B. Allen  
C. F. Baker  
W. H. Bingham  
Bliss & Gillis, Inc.  
J. C. Hester  
Caldwell, Baker & Tillman  
J. B. Hayward & Son  
Malcolm H. Jones  
E. W. Jones  
E. S. Jordan  
E. J. Keith  
Katie, Menard Co.  
David L. Ladd  
David Lestman  
Allen F. McGinn  
Meyers Land Co.  
John E. Moore  
H. H. Smart  
Waring & Moore  
W. H. Wilson

### WE HEARD IT SAID BY—

John B. Howards, secretary Birmingham Rotary club: "There are now 3,334 Rotary clubs in 64 countries of the world. The movement is growing all the time, and offers much assistance towards the establishment of world peace."

The wearing of arm bands while on the streets, and in crossing the street, and in sending in safety educational sheets and essays.

School safety patrols are being established in southern Michigan, except Detroit, as a part of the work being carried by the organization of schools in this section in some form of safety work. At the present time, there are more than 100,000 school children organized in these safety programs.

### BOARD OF EDUCATION

Birmingham, Michigan, May 15, 1930.  
The regular meeting of the Board of Education was held in the office at 8 p. m.

Present: R. L. Quarrion, Ray A. Palmer, Fred V. Coryell, Guy W. Jensen and Leigh Lynch.  
The minutes of the last meeting were approved.

Moved by Lynch, supported by Quarrion that a contract be made with Evangeline Pursell for History in the Baldwin High School for 1930-1931 at \$2125. Carried.

Moved by Quarrion, supported by Palmer that the following contract be authorized. Carried.  
Franklin Whitney, Boys Physical Education and Basketball, Baldwin Building, \$210.  
Winifred Everill, Grade 8B, Barnum, \$1500.

Dorothy Barth, Grade 1A, Barnum, \$1200.  
Miriam Brown, Girls Physical Education and Swimming, Barnum, \$1400.  
Herald Mumby, Manual Training, Barnum, \$1600.  
Anne Bosker, Grade 3, Pierce, \$1250.

A report of night school for 1929-1930 showing an enrollment of 80 the first semester, and the second semester was received from Principal M. C. Hart and ordered filed.

Rev. Henry S. Evans of the United Presbyterian Church was offered an invitation to preach the baccalaureate sermon for the graduating class the evening of June 8 in the Baldwin auditorium.

Mr. Randall was authorized to purchase the seating for the Barnum school.  
Moved by Palmer, supported by Lynch that the calendar plan (2) for 1930-1931, which provides for two weeks vacation at Christmas time be adopted. Carried.

Moved by Lynch, supported by Jensen that Evangeline Pursell be given a contract at her former rate of salary, \$2125.00 per month, from April 31, 1930, to the end of the present school year.

Carried.  
Moved by Quarrion supported by Palmer that Mr. Randall be authorized to have the Barnum court yard paved. Carried.

A report of a dental survey of the grade children in the Adams school which was made in February by Dr. Floyd H. DeCamp of the Couzens Fund was received, discussed and laid on the table.

Moved and seconded that the bills be allowed. Carried.  
Chisus Brothers, Barnum Building, \$33,760.89; Great Transit Railway System, coal, \$152.46; Birmingham Wallpaper Co., Bldg. Repair, \$28.40; Birmingham Hardware Co., Physical Training, \$34.18; Lawson-Erb Lumber Co., Manual Training, \$4.30; E. W. Osborne, Automobiles, \$16.62; McClellan Feed and Sift Co., Grounds, \$130.89; W. J. Jensen, Physical Training, \$63.25; Pittsburgh Plate Glass Co., Bldg. Repair, \$38; H. Earle Correvont, Miscellaneous, \$5.35; Leonard Electrical Co., Manual Training, \$11.53; Watkins & Radcliffe Co., Janitor Supplies, \$11.03; Ray E. Walker Co., Bldg. and Grounds, \$37.44; Gymnasium & Playground Equipment Co., \$50.40; Vacuum Oil Company, Bldg. and Grounds, \$5.33; R. C. Monthron Lumber Co., Manual Training, \$3.92; Royal Oak-Birmingham Express Cartage, \$1.53; Frederick D. Madison, Barnum Building, \$600.00; L. E. Aldrich Service Station, Automobiles, \$17.78; Harry Lovey, Physical Training, \$10.13; Detroit-Edison Co., Electricity, \$468.49; Consumers Power Co., Gas, \$17.00; Shain's Drugs, Supplies, \$2.50; Pacific Steel Boiler Corp., Boiler Repair, \$50.48; W. S. McAlpine Mfg. Co., Miscellaneous, \$15.50; American Steam Pump Co., Building Repair, \$70.00; The Casen-Mfg. Co., Manual Training, \$25.00; W. J. Jensen, Coal, \$43.50; Wm. H. Harmon Coal, \$65.34; Melvin C. Hart, Library, \$1.45; World Book Co., Supplies, \$5.90; James Cobb, Stamp, \$10.03; Birmingham Transfer Co., Cartage, \$14.15; Detroit Edison, Duplicate of No. 7264; Birmingham Savings Bank, Pay Roll, \$5.00.00; David Fleming Building & Grounds, \$28.50; R. C. A. Victor Co., School Supplies, \$47.74; George L. Williams Co., Janitor Supplies, \$17.82; Godley Packing Co., Janitor Supplies, \$51.65; Millera Falls Co., Manual Training, \$1.22; Edwin Allen Company, Baldwin Library, \$40.75; Temple

Stores, Domestic Science, 4.42; Thomas Charles Co., School Supplies, \$1.42; Gregory, Mayer & Thom Co., School Supplies, \$2.00; Birmingham Eccentric, Printing, \$38.05; Erwin & Smith Market, Domestic Science, \$6.25; Chisus Brothers, Barnum, Insurance, \$75.00; Royal Oak Cement Const. Co., Bldg. and Grounds, \$157.50; Rachel Peterson, Lectures, \$17.50; Tests Electrical Co., Barnum School, \$1,791.00; W. A. Johnson, Manual Training, \$10.00; Eames & Brown, Barnum School, \$4,936.00; Maul-Naetoch Co., Furniture, \$23.18; Mr. L. M. Randall, \$9.00; First National Bank, Pay Roll, \$1,625.00.  
Moved and seconded to adjourn. Carried.  
LEIGH LYNCH, President Pro Tem. GUY W. JENSEN, Secretary Pro Tem.

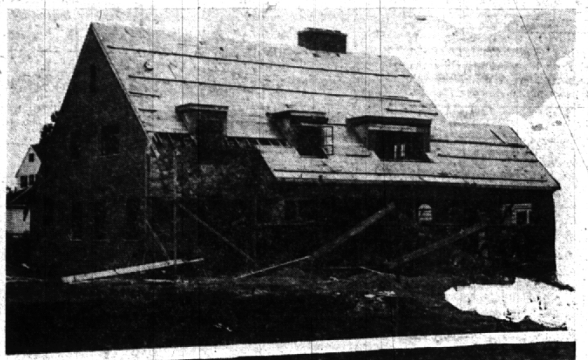
## Oakland County Savings Association

ROBERT R. ALLEN, Sec'y

5% on Savings — 7% to Members

243 East Maple Avenue Telephone B'ham 1040

# The Picture Story Of PERMANESQUE



### A Picture of a Permanesque Home Being Built In Quarton Lakes. . . .

Here you see an actual photograph of one of the Permanesque homes now being built in Birmingham. In the past we have shown sketches of this home through our newspaper advertising. Now you may discover the actual faithfulness of construction to original beauty and character that has been accomplished to date.

## Here Is The Architect's Sketch



### Visit This Home That Is Causing Such Interest

Hundreds of local and out of town men and women have visited Permanesque homes which we are building in this area. Scores who have inspected the construction progress, have come to our office that they might learn more regarding this type of building. Whether you plan to build now or later, you should investigate Permanesque. It is the greatest forward step in the history of home building.

## Features of Permanesque

Firesafe, Brick and Stone Exteriors, Steel Studs, Concrete Backup Tile, Naylor Grip Floors, Incinerator, Steel Joists, Asbestos Shingle Roof, Hot Water Heat, Tile Baths, Goodyear Rubbertile Floors, Steel Casement Sash, Roloscreens, Copper Water Pipe, Brass Compression Fittings, Package Receiver, Copper Metal Work (Outside), Thoroughly Insulated, Bennett Fireplace Heater, Stone Sills, American Laundry Room, Metal Lath Throughout, Automatic Heating Control, Oil Burner, Radio Wired, Tile Window Stools, Curtis Trim, Rustin Hardware, Mechanical Refrigeration, Crane Plumbing, Chromium Plate Fixtures, Low Insurance, Minimum Upkeep, Outstanding Architecture.

Two PERMANESQUE homes are now being constructed in Birmingham. You are invited to visit these two homes and inspect for the first time in the history of home building, an entirely new type of lasting construction that marks PERMANESQUE and makes it such a departure from the past methods of building. See for yourself why it is wise to build according to PERMANESQUE specifications. Discover this new era in home luxury, safety, permanence and beauty. Whether you plan to build now matters not. When you do build you may regret not knowing what PERMANESQUE offers. You may visit these two homes at these locations:

**Fairmont and Sheffield Aves., Beverly Hills**  
**Lakeside Avenue (Between Harmon & Oak Sts.) Birmingham**

## HOMES PERMANESQUE of OAKLAND COUNTY, Inc.

A. H. OBERBECK, President  
Builders and Licensees of Permanesque Homes

231 S. WOODWARD AVE. BIRMINGHAM PHONE 2379

Associate Builder  
PACKARD-CHARLTON BUILDING CO. 229 PIERCE ST. PHONE 2244

Associate Builder  
CONNELLY BUILDING COMPANY 316 N. WOODWARD AVE. PHONE 710