

The Woman's Page

Bridge 3 Prizes

Suggested by The Twins

In answer to the oft-times puzzling problem of a bridge gift that is personal, practical, yet not too expensive.

HOSE \$1.15 Full fashioned silk hose, sheer and clear, has the new French heel and comes in all the new shades. Clifton or service weight.

Handkerchiefs 50c and \$1.00 Dance handkerchiefs of beautiful chiffon in all the new pastel shades. Always acceptable, they are ideal as gifts.

JEWELRY 95c Costume jewelry necklaces of crystal, pearl; or novelty stones in several colors to match your ensemble.

TWIN HOSIERY SHOPS



FIRST STATE BANK BUILDING
North Woodward Avenue

BROWNIES

(Mrs. Mary Morton's Weekly Tested Recipe)
One cup brown sugar, one-third cup shortening, two eggs, one-fourth cup flour, one cup nuts, two ounces bitter chocolate. Cream shortening, add sugar and well-beaten eggs. Then add flour, chopped nuts, a dash of salt and the melted chocolate. Mix well and spread in a paper-lined tin to about a quarter of an inch thickness. Bake in a moderate oven, 350, until the cake shrinks from the sides of the pan. Turn upside down, pull off paper and cut in two-inch squares while still warm.

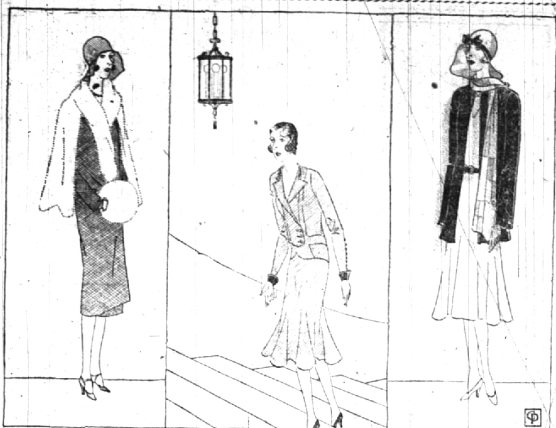


"I KNOW Ridley's Do Better Cleaning"

"I'm awfully fussy about cleaning, Jane, and I've tried everything. When Ridley's opened up I sent a dress there to be Miracleaned and have traded there regularly ever since. They take such pains with fancy dresses, and their Miraclean system is so superior to ordinary methods that Ridley's didn't have to sell me on their service. I sold myself."

RIDLEY CLEANERS INC.
Miraclean
clean as a breath of Spring
W. Maple Ave. Phone 380

Accessories Most Important



Left, red cloth coat with beaver case and muff; center, red broadcloth frock; right, resort sports coat.

By LUCY CLAIRE

Fashion Writer for Central Press

The ensemble is more important than ever. We no longer wear one costume for all occasions. Thinking in terms of clothes and hues, we must think of the entire costume with its accessories, and accessories are by no means the least important part of the ensemble. More attention is being given them in connection with the new silhouette than, perhaps, ever before. Naturally, since it is no longer the thing to wear one costume for all occasions, the shoe, dress and accessory wardrobe is larger and more varied as to types and colors. But as contrast in accessories to costume is quite an accessory to matching a costume, it is not necessary that there be a hat, shoes and bag to match every ensemble.

A great deal of color, both matching and contrasting, is being worn. Contrasting accessories such as bag, shoes and hat of black will be worn with either soft or bright color costume of spring, or with prints that accent black. There are so many different colors that look well with black accessories that the black shade has become a staple necessity in the wardrobe. For spring it ranks second to brown.

Red Favored by Smart Women

At the present moment a great

deal of red is being worn wherever smart women congregate. Red is such an outstanding color that we are apt to overestimate it as to quantity. But it is noticeable that at the smart hotels in New York, for instance, one sees quite as much red as blue or gray. Brown is, of course, the leading color, and black plays a close second. But many red coats trimmed with brown or black fur are noticed. Where the coat is trimmed with brown, which is usually beaver, brown kid shoes and a brown hat are worn, and where the coat is trimmed with black, the black kid shoe and black hat accompany it. Sometimes the hat has a tiny red feather fancy tucked in the side.

Typical of the mode is the coat sketched at the left. The coat is in a soft, lacquer red cloth, with the collar, cape and muff of beaver. The hat and shoes are brown matching the beaver. The frock of silk crepe was red like the coat.

The red frock trimmed with black is also fashioned. The model sketched at the center is of red broadcloth in a coat princess silhouette with flared skirt, and is trimmed with black velvet collar and cuffs. It is shown worn with black pumps.

The third model at the right shows a resort sports costume in a Palm Beach collection. This consists of a white crepe de

chine sleeveless frock, with the normal waistline marked by a red leather belt, over which is posed a red jacket with a red and white scarf. White kid shoes and a white hat trimmed with a red ribbon accompany this costume. All this goes to prove that red is going to be good this summer, though not as good as some of the other colors, like green, for instance.

Remember Few Facts About Skin

By MADAME RUBINSTEIN

Since I haven't written about different types of skin for a long, long time, I'm going to repeat my self and describe them again this week, even at the risk of being called bores.

You need to remember facts about skins constantly, with the change of seasons, with the weather if you travel, with the weather as the seasons change. And reminding you to do certain things for it is as necessary as reminding you to get to bed early or to wear your rubbers when it rains. You know enough to do both, of course, but you forget, or perhaps you don't yet know just how really important they are.

First, let's consider the normal skin. You are fortunate if your skin is in this type, as I have infor-

ed you before. This is the skin every woman would like to have, and it also is the type every woman can have if she will take the proper corrective care.

Soft, smooth, fair, free from blemish—the normal skin is lovely to look at and lovely to touch. But the skin of a healthy child. What is the secret of skin such as this? Good circulation is the chief cause—fresh, free stream of healthy blood flowing through the tissues freely to cleanse and feed them, to keep the skin active.

A famous poet, Walt Whitman, once said that beautiful blood and a beautiful brain were the source of all personal beauty, and I am inclined to agree with him; if he meant, as I think he did, that healthy red blood and a fine, healthy brain or nervous system to direct and control the body's course through the body, will keep both healthy—and, hence, beauty's foundation. These, then, are the secrets of the normal skin: good blood, good circulation, good care.

Cleanse, stimulate and tone your skin daily with the proper preparation—a cleansing cream made for normal skins; a mildly stimulating, skin-clearing cream; a skin-toning lotion also created especially for the skin that is normal.

Just these three preparations used daily, either in one treatment or separately (you may leave your skin-clearing cream on all night) will prolong the normal skin's beauty almost indefinitely.

Washing should, supplement the use of cleansing cream occasionally. Use a good penetrative wash- ing preparation (not an ordinary soap) with plenty of tepid water.

Child Labor Day

Child Labor Day for 1930 will be observed Jan. 25 for synagogues, Jan. 26 for Sunday schools and churches, and Jan. 27 for clubs and other organizations. The National Child Labor commit-

TEMPLE OF MEMORIES

America's Finest Memorial Mausoleum
WHITE CHAPEL MEMORIAL PARK
Detroit and Michigan's Original Memorial Park

ADJOINING BLOOMFIELD
NON-SECTARIAN
PERPETUAL CARE
EARTH INTERMENTS
MAUSOLEUM ENTOMBMENTS
INURNMENTS
White Chapel Memorial Association
Suite 621 Bank Bldg., Detroit
CADILLAC 4763

MATTRESSES REMADE

All kinds—Felt, Cotton, Kapoc, Hair, etc., remade and recovered JUST LIKE NEW!

ALL WORK RETURNED THE SAME DAY

By Request

Feathers Renovated

For your convenience, call Pontiac 27695

or Royal Oak 387, at our expense

OXFORD MATTRESS CO.

382 S. SAGINAW, PONTIAC, MICH.

Pontiac 27695

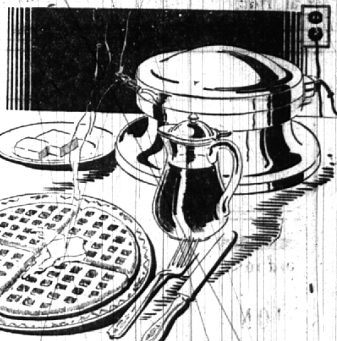
You Will Want This Electric Clock, Electric Waffle Iron and Electric Percolator

Electric Percolator \$4.90

This 7-cup electric percolator is aluminum paniced—as attractive addition to your table. Extremely simple in construction and operation, it cleans and quickly cleaned. A safety fuse protects it when the percolator boils dry or is started without water. You will be delighted with the convenience of an electric percolator—simply plug in the connection and prepare your coffee right at the table, right at your elbow.

Waffle Iron \$5.95

A nickel plated electric waffle iron that makes waffles in two minutes—right at the table, right at your elbow, without grease or smoke. Snap the switch—pour in the creamy batter, and a delicious plate is soon ready. Light, crisp waffles may be enjoyed for breakfast, with butter and syrup; for noon luncheon, alone or as an added delicacy; for dinner, as dessert, with cinnamon and whipped cream or hot, spiced apple sauce. They are a treat in a dozen different ways.



Electric Clock \$9.75 and up

The electric clock is a modern timekeeper—it needs no winding, no attention. You simply plug it into the electric outlet and forget it. Thereafter it keeps accurate time, faithfully and automatically. Enjoy this new convenience—install an electric clock in your home.

These appliances are reasonably priced, yet carry the unconditional Detroit Edison guarantee.

THE DETROIT EDISON COMPANY

New Skirt Lengths Thrust Bodice Into Glare of Fashion's Spotlight

By HARRIET

BODICES are coming in for new

share of consideration on their costumes. Now that skirt lengths have been talked into the ground, as one might say almost truthfully, and waistlines have been discussed from the hips up to Empire height on some gowns, bodices find the spotlight of style concentrating on them.

They have jabots, scarfs, revers, girdles, yokes, ruffles and bows. Sometimes quite complicated combinations of several of these treatments.

Wrapped treatments are coming in and hence the surprise closing is better and better. As bodices grow in importance, vestees and other lingerie gilets are worked into the plan of a frock, often a silk one. New blouses have all manner of tricky fastenings, some of them being so fitted to the body that they snap clear up one side so bliddy can don them. Other times they tie on, button on, or slip on over the head to tuck into the skirt like the old-fashioned shirt-waist.

This importance of the bodice increases the intricate cut of the blouse itself. Some of them are quite bolero. Others use bias folds, circular ruffles, fine seaming, yokes, and other treatment that is very complicated to cut and make.

Necklines and sleeves are original in cut, ever graceful, ever feminine. The use of lace is on the increase but it is often used in conjunction with fine batiste, linen or organdy. Buttons are used now for trimming many bodices, with crystal buttons quite the accepted thing on pastel colored shirt prints and skating frocks for daytime.

A GREEN velvet frock that is just for dressy days in late winter shows the increasing importance of bodices in its cut and in its trim. The skirt works toward a high waistline and above that the blouse is cut very intricately to give fine seaming in a curved line up each arm, from the front to the back of the bodice. Then there is a curved line across the back of the yoke.



A new kind of cape sleeve, as shown at the left, is used on a rare brown broadcloth's Paquin coat with blue fox fur. The importance of bodices in its cut and trim is illustrated on the right, where a green velvet frock is distinguished by a fine cut and a rose point lace collar and cuffs.

The rose point lace lends elegance to this frock by the restrained way in which it is used. Cuffs are narrow and tight and the lace is laid around the V neckline and edges the narrow front panel of green velvet from the V almost to the waistline. This is a very new way to use a delicate touch, combining as it does the quaint shirt-waist idea of a front with the newer, feminine idea. An ensemble of rose brown broadcloth introduces the newer importance of the bodice portion by creating a very new sleeve and having a bolero back to the coat.

The bolero back is cut separate, being attached at the armholes and across the shoulders, with the coat running up under it. The sleeve, on the other hand, is cut in one, with the clearest cape portion being hand-bumped. The sleeve shirred from where it ends down to the wrist, where rare blue fox adorns it. The same expensive blue fox collar this coat.

Both of these costumes are prepared with ideas for the imaginative woman who makes her own clothes. Both repeat the new stress being laid upon the bodices of one's costumes.