

Confidential

Phone 11

UNDER THIS HEADING "For Sale," "For Rent," Etc., cash per word, 10c. For each consecutive insertion of same ad, 1c. per word—minimum charge 25c. Ten cents extra for each ad not paid in advance. All copy must be in by Wednesday, 4:30 P. M., of each week, to be inserted. Our Telephone Numbers are 11 and 12.

PERSONAL
PIANO—POPULAR MUSIC TAUGHT. DORIS THOMPSON. PHONE 795.

HELP WANTED—MALE
MONTGOMERY WARD & CO. Want an energetic reliable representative in this district as salesman. Experienced and energetic preferred but will train a man if qualified. Cash requirements, electricity, character, and appreciation of a real opportunity. Reply by letter giving experience past five years. Montgomery Ward & Co., Room 211, 501 Terminal Bldg., East Port St. at 1008 St., Detroit, Mich.

SITUATIONS WANTED—MALE
PLASTERING wanted. Repair work a specialty. No patch too small. Phone 99-W.

HELP WANTED—MALE
PLASTERING, all kinds. Patches a specialty. Estimates cheerfully given. Call Royal Oak 5125.

HELP WANTED—MALE
CARPENTRY, cabinet making and furniture repairing also saw filing and tool grinding. E. W. Hunt, 361 Pierce St., Phone 39-W.

Apple Trees

Am thinning my orchard and disposing of several beautiful full bearing apple trees.

Have an apple tree in your yard—Come and select your own.

REASONABLY PRICED

C. A. STRAND
Adams Road
Phone Birm. 1102

No One Is Safe Nowadays

With the streets slippery so much of the winter and with steamed and frosted windows so common, it is dangerous for every automobile driver to venture out without proper protection of insurance.

Insure With Us



INSURANCE

MILTON PARKS
132 W. Maple Ave.
Phone 1305

Buy Real Estate Now

Now is the proper time to invest in Real Estate. A great many properties can now be purchased at prices that present wonderful opportunities for increase during the next few months. We offer:

EAST MAPLE AVENUE BUSINESS FRONTAGE, in 20 ft., 50 ft. and 100 ft. pieces at \$100 per front foot. Very liberal terms. This is due for a rapid increase in value.

\$700 DOWN, BALANCE LIKE RENT. Attractive 3-bedroom home in the Northeast section. Adams School district. Beautiful lot that will have \$5 feet frontage on the new highway. A modern, comfortable home and a real investment. A Buy at \$9500.

WILL SACRIFICE FOR QUICK SALE. Modern home with 5 bedrooms and bath, in the Northwest section. Near the new Catholic School. See this and make us an offer.

Also Many Attractive Rentals From \$40 to \$200 Per Month

Hascall & Hascall
WOOSTER BLDG. PHONE 278-W

TRUCKING, moving, express, local and long-distance. Van service, moving and storage. E. W. McKim, 184 N. Washington St., Rural Office, 1218, Day or Night.

MISCELLANEOUS
FURNACES cleaned, repaired and reworked. Prices reasonable. Service guaranteed. E. W. McKim, 184 N. Washington St., Rural Office, 1218, Day or Night.

PAINTING AND DECORATING
No job too small. Best work done. Free estimates. Wilson, 292 Brown St., Phone 1255.

HOUSECLEANING—Who do your own? Let us do it. Prices are right. Satisfaction guaranteed with every service. E. W. McKim, 184 N. Washington St., Rural Office, 1218, Day or Night.

SEES IMPROVED BUSINESS IN 1930

Carl L. Bradt Forecasts Increased Real Estate Sales in District

"There have been so many analyses, reports and forecasts on business of last year and 1930 that it is pretty hard to sift the kernels from the chaff. Some of the reports have sounded very logical, and these reports are all optimistic as to what 1930 is going to bring forth." The speaker was Carl L. Bradt, vice-president of Walsh, James & Wasey Co., large real estate operators.

"Where opinions are almost unanimous, especially when these opinions come from conservative bankers, hard-headed business men and professional men who watch things closely, it would seem that the thoughts they advance are correct. The unanimous opinion is that the Birmingham-Bloomfield Hills area for a good increase in business this year, with a steady and

expanding business for the next two or three years.

"There is no question about Birmingham and Bloomfield being ideal places to live. The large number of homes erected in 1929 in the Walsh, James and Wasey Company developments in this area is merely added proof, and the fact that this company was up 1929 by declaring a cash dividend and adding some \$30,000 to surplus, is also good proof.

"Every one of the members of this organization has definite prospects who are planning on moving to Birmingham or Bloomfield this year. As a matter of fact, a number of sales have been made already. As spring comes on a number of people who are unable to move during the winter months will make the move at that time.

"Looking at the real estate situation in this area from every angle, which not only includes the natural beauty and attractiveness of this community, but the advent of rapid railroad service and rapid motor car service, brings the one conclusion, that we are headed for good business in 1930."

SCHOOL SURVEY ASKED
A survey of the school buildings here will be requested of the Michigan Underwriters' Association by the Board of Education, according to action taken Monday night by the Board, which wishes to ascertain the proper amount of insurance to be carried on the buildings.

Farm Bureau Leaders Meet
Election of a secretary and treasurer and consideration of a county district plan for the Oakland County Farm Bureau's operation will compose the first meeting of the executive committee Saturday at 1:30 p. m. in the Farm Bureau office at Pontiac.

GARDENING

We have a word of praise from the Rev. Warner Forsyth who told members of the Exchange club Tuesday, "Birmingham people are the kind who like to get out in their yards in the spring to start beautiful things growing."

At this time of the year when all nature is asleep, resting so that when spring comes, the may, with renewed vigor, put forth bud, leaf and flower, it becomes the gardener to do all he can to help her.

Where trees are to be moved the work may be proceeded with as the weather permits. Very little work, outside of pruning and thinning of fruit trees and shrubs can be done.

It is well to bear in mind why and how pruning of fruit trees should be done.

Pruning has the power of increasing the vigor of trees in two ways. By cutting off the right amount of branches at the proper season a greater supply of nourishment is directed to the remaining branches of a tree and the growth is much more luxuriant as the result.

In the case of stunted and enfeebled trees, pruning is practiced so that fewer limbs and shoots will have to be nourished. Heavy pruning in thrifty trees promotes the growth of numerous suckers which should be rubbed off as they appear. Cutting them would only increase their number.

With regard to pruning grapes every grower has his own method. The main point is to reduce the quantity of wood and to admit light and air into the vines. After pruning, gather all limbs together and burn them.

The trees are then ready for the

various sprays which are used to combat insects and control diseases. Information regarding spraying will appear in a later article.

ARTHUR CLAXTON,
Bloomfield Dist. Horticultural Society.

TWO HURT IN FALLS
Mrs. Pearl Hill, 963 Knox street, and Mrs. H. J. Moore, 439 Oakland avenue, suffered bone fractures of the elbows last week from falls on slippery pavements. Both were treated at the St. Joseph Mercy Hospital at Pontiac and are now recovering at their homes.

Mind the Motor
Success Expert—What's your name?
"Greek Client—Gus Poppapopoulos."
Success Expert—Get a job selling motorcycles.—Masonic Craftsman.

Good building lots in all sections of the Village.
Lots suitable for incomes, very reasonable. Ask about building and financing an income on your lot.

Trade your farm for Birmingham property.
Beautiful estate large brick home, 3 1/2 acres close to Birmingham. \$42,500.00.

Not to Suggest, of Course
"What a fine child. Can he say anything?"
"Yes, we've taught him to say 'Thank you' every time any one puts a dime in his bank."—Brooklyn Eagle.

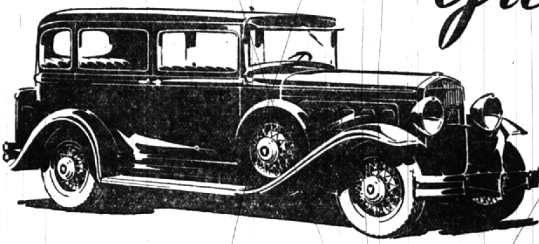
Comment Reversed
Father—What do you think of a man that throws a banana skin on the footpath?
Son—I don't know. What do you think of a banana skin that throws a man on the footpath?—Montreal Star.

Ray A. Palmer
REAL ESTATE
Two Offices:
720 East Maple and First National Bank Building
Phone 854

Two Entirely New Cars

HULSON'S

Great



... a fine—fast—powerful Eight

We count this our greatest achievement. From front end to tail light it is a new design. In appearance and finish it is commandingly beautiful. And in smoothness it surpasses anything we know.

It outranks anything we have ever done in design, performance or value.

The roadability and riding ease are not excelled by any car at any price. And the price at which it sells questions the wisdom of ever paying more for any car.

Prices and Details—Lowest finance terms available

Standard Light Chassis—Coach, \$1050; Coupe, \$1100; Standard Sedan, \$1200; Roadster, \$1700; Phaeton, \$1300; Sedan, \$1335. Long Wheelbase—5-pass. Touring Sedan, \$1250; Buickham, \$1295; 7-pass. Sedan, \$1500; 7-pass. Sedan, \$1650. Prices f.o.b. Detroit, Factory. Choice of wide variety of colors. Two-way shock absorbers all around. Radiator shutter—Starter on dash—Electric pump for fuel and oil—Inclined—7-spoke—windshield—cleaning—glass—proof—rear-view mirror—map light—disappearing rear window curtain, tire wall in fender, extra tire in trunk, rugged windshield support.

and

ESSEX

the Challenger



with even faster speed . . . with greater power . . . with quicker get-away . . . also challenges in good looks—in real values—in reliability and in price . . .

Its challenge is distinctive and unusual in those fine qualities which owners prize most highly. In appearance it is a completely changed and modern car. The bodies are longer, wider, lower. It challenges your interest with big car spaciousness and comfort.

The motor is larger and smoother. The performance range is notably increased. It gets quickly away at the stop, is strong on the hills and swift on the straightaway.

You won't be content with any less comfortable or less good looking or less distinctive car. It is a thoroughbred automobile and it challenges your attention because of its price.

Features That Challenge

Large Body—Greater Power—Faster Speed—Added Economy. Wide choice of Colors in Suit Your Own Taste. New Air Body Design. Four Two-way Shock Absorbers. Radiator Shutter, Electric, Starter on Dash, Electric Gauge for Fuel and Oil.

Coupe \$1225 (with Ramble Seat \$1275)—Coach \$765—Standard Sedan \$825—Touring Sedan \$875—Buickham \$925—Sedan \$975. Prior f.o.b. Detroit, Factory.

164 S. Woodward
Phone 70