

CLUB LEARNS ABOUT RUBBER

Herbert F. Poehle Outlines Industry in Talk Given Before Exchange

As the guest of Robert R. Allen, Herbert F. Poehle, of the United States Rubber Co., outlined to local Exchange members Tuesday night at the Lons Pine Inn the story of the rubber industry. He passed around samples of crude rubber, including a demonstration of the coagulating process of separating pure rubber gum from the latex milk which is obtained from the rubber trees.

Kenneth Bingham presented past-president Robert Y. Moore with a past-president's shield. A brief discussion relative to the coming state Exchange Convention at Saginaw next Sunday and Monday was held; among those who plan to attend are H. T. Elberly, Harry S. Starr, Robert Y. Moore, Kenneth Bingham, and Guy Jensen.

The club Tuesday noon voted to start in next week to hold meetings at the Fox & Hounds Inn, Bloomfield Center. Plans are also under way for the starting of a bridge tournament, to be held each week on a specific day from four to six o'clock.

To Give Address On Disarmament

R. M. Atkins, Minister of the First Methodist Episcopal Church, will take as his theme on Sunday Evening, Jan. 26, at 7:30 o'clock, "The Spiritual Background of the London Disarmament Conference."

So that all aspects of the question may be considered, a Forum discussion will follow Mr. Atkins' address. Anyone having a question to ask or contribution of thought to make will be given an opportunity to participate in the discussion. The public is cordially invited.

52 Issues of The Eccentric \$1.00

WELL-KNOWN REALTOR LEAVING VILLAGE TO ENTER DETROIT FIRM

Mr. E. H. Tillotson, member of the real estate firm of Colgrove, Buck & Tillotson, has been elected to the Board of Directors of the Federal Discount Corp., of Detroit; and Feb. 15, will retire from his present firm to become an officer in this well known institution.

In addition, to being one of the leaders in Oakland County real estate affairs, Mr. Tillotson was the president of the Birmingham Estate Board during 1929, and was re-elected a Director this year.

The old firm of Colgrove, Buck & Tillotson will be continued by Mr. L. E. Colgrove and Charles E. Buck, who are the other members of the organization.

Speaking of the change in their affairs, Mr. Colgrove said, "As much as we regret to see Mr. Tillotson leave our firm, the opportunity offered him with the Federal Discount Corp. is one which in my opinion, Mr. Tillotson has no right to decline."

This Corporation has a great many other financial institutions, is becoming more and more interested in real estate investments, and Mr. Tillotson's experience makes him an ideal man for the new connection. We are glad to say that we will still have his services in an advisory capacity when we need them."

Mr. Tillotson said, "It is with a great deal of regret that I am actively withdrawing from the firm of Colgrove, Buck & Tillotson, to accept the Assistant Secretary-Treasurer of the Federal Discount Corporation."

"My four years in the real estate business in Oakland County has been one of constant pleasure and while the scene of my business activities will be transferred to Detroit, I expect to live in Birmingham, and keep up with the civic matters in which I have been so much interested, and socially see just as much as ever of the friends who have been so good to me during the years that have been active in the Birmingham area."

Five students rescued a bird that had become entangled in wires 80 feet above the ground in Eaton, Eng.



MR. E. H. TILLOTSON

Month's Building In Village Drops

Construction permits for new building during December in Birmingham reached \$31,000, or less than half of the amount reported for the same month in 1928, according to the annual report of the S. W. Strain & Co., from the official figures of 288 municipalities.

The annual report, however, shows that the village issued permits for buildings valued \$2,247,614 as compared with the \$2,247,000 total of 1928. Totals for the State of Michigan indicated a decrease in the amount of building permits during 1929 over 1928. In 1928 the building totals, compiled from the statistics of 202 cities and other municipalities totaled \$208,915,673. In 1929, the total for the same number of municipalities was \$148,851,711. Birmingham was fifteenth in the list for building permits issued during December, 1929.

BOWLING

Police Dept. vs. Bham Savings Bank: Police Dept.—139 172 200 511 Green—235 193 120 548 Brown—142 190 155 487 Baskell—231 178 203 599 Totals—899 922 830 2651

Bham Savings Bank: A. Livingston—180 125 147 454 D. Livingston—207 132 198 537 LeCroix—152 120 118 390 Erwin—122 176 171 459 Martineau—153 189 148 490 Totals—904 794 782 2480

A. H. Oberbeck vs. Mahaffy: A. H. Oberbeck—114 Kurth—170 139 423 Triebelhorn—131 130 148 409 Weeks—132 211 143 501 Aids—165 170 161 496 Wold—153 211 134 498 Totals—790 882 725 2417

Mahaffy: H. Brown—148 145 229 522 Lamont—122 190 148 531 B. Biers—170 201 162 533 Jaggs—201 141 184 526 Totals—879 814 890 2613

Bham Dept. Store vs. Williams Boot Shop: Bham Dept. Store—161 173 147 481 Kurth—130 146 193 469 Davidson—114 159 162 473 Nixon—159 161 210 530 Anderson—141 184 194 519 Totals—806 840 913 2649

Williams Boot Shop: Williams—224 158 204 586 Smith—135 161 181 478 Dell—155 146 187 488 Moore—191 162 179 532 D. Bieker—190 213 162 565 Totals—896 840 913 2649

San Shine Boy vs. Moulthrop Lumber Co.: Chapman—162 189 171 522 Noud—180 142 162 484 Resnick—182 129 182 493 Schuck—137 157 143 417 J. Moore—145 135 166 446 Totals—806 732 824 2362

Moulthrop Lumber Co.: Reilly—167 175 181 526 Stearns—164 169 175 508 Moulthrop—174 171 184 529 Mintz—189 188 237 614 Moore—139 132 145 416 Totals—806 837 924 2567

Tuesday Night League: Thornton Garage vs. Dodge Sales: Thornton—188 160 165 513 Reynolds—170 168 181 519 C. Gravellin—153 161 180 514 Thornton—150 170 168 478 Nixon—175 181 128 484 Totals—838 840 812 2490

Dodge: Hoover—132 131 179 445 Bethel—163 169 237 569 Seeger—126 135 167 398 McDonald—186 169 158 513 Bell—170 175 156 501 Totals—777 882 897 2426

Tests Electric: Wright—122 143 147 412 J. Catrain—141 123 229 492 McCammon—98 120 221 439 Adams—171 201 196 568 Teets—165 148 184 497 F. Catrain—123 143 208 474 Totals—691 738 891 2236

Bham Eccentric: Shaw—147 149 215 511 Todd—153 198 126 387 Ahlrich—97 128 154 379 Dove—100 115 125 340 Morgan—130 130 130 390 Wilkins—110 112 222 444 Totals—627 610 732 1969

Billiards vs. Axler Cleaners: Bidwell Billiards—130 171 173 474 Twilliger—228 178 120 526 Moore—175 143 184 502 Bartlett—120 133 161 411 Dan—148 163 148 459 Totals—791 728 786 2305

Axler Cleaners: Axler—114 180 177 471 Mann—156 185 129 470 Johnson—143 143 151 437 Hall—163 144 167 474 Wilson—118 152 113 383 Totals—694 804 737 2235

Chick Sales vs. Pecks Tailors: Buick Sales—167 158 145 470 Dan—167 158 145 470

Golden Crump—142 115 141 398 Flack—178 188 164 530 Peters—196 188 166 530 Totals—861 797 748 2406

Pecks Tailor: Hill—103 147 111 361 Fogg—170 125 183 478 LeCroix—175 144 185 504 Husson—145 151 152 448 Bergstrom—130 83 131 344 Totals—723 670 732 2125

BOARD OF EDUCATION

Birmingham, Michigan, January 6, 1936. The regular meeting of the Board of Education was held in the office of S. P. M. Present, Guy W. Jensen, Ray A. Palmer and Fred V. Quivon.

The minutes of the previous meeting were approved. Dr. Thompson presented a plan for a proposed dental survey and was directed to have Dr. DeCamp, Oakland County representative of the Couzens Michigan Children Aid Fund, confer with Supt. Viet concerning the same.

Moved by Jensen, supported by Quivon, that the Senior Varsity Football team be advised that Mr. and Mrs. Ray A. Palmer will be the chaperones from the Board of Education for the Washington trip and that the Board will pay the expenses of one faculty chaperon. Carried.

Moved by Palmer, supported by Quivon, that the Triangle series of Arithmetic be adopted for use in the Birmingham public schools commencing January 27, 1936. Carried.

Moved by Jensen, supported by Palmer, that the following relates and extras be authorized for the Barnum School, Carried. Eames and Brown, rebate on galvanized ducts \$295.00 Eames and Brown, extra for pipe covering 295.00

Teets Electrical Company, high tension line 213.30 Paid by Quivon, supported by Palmer, that the following persons be granted diplomas as of January 24, 1936.

DIPLOMA LIST: 1. Betty Brede 2. Laurence Stewart Clark 3. Veneta Susanne Cook 4. Gertrude A. Corryell 5. Margaret R. Corryell 6. Frances Cornelia Frye 7. Wallace Gail 8. Esther M. Kist 9. Frank Hartwell Ladd 10. Helen A. McClelland 11. Calvin Morgan 12. Violet Alice Prentice 13. Henry Clark Smith 14. Catherine Beth Stecker 15. Eleanor Jane Stolberg 16. Robert William Voss 17. Gwendolyn Cecilia Weller 18. Earl Edward Ziegler

Moved and seconded to adjourn. Carried. GUY W. JENSEN, President Pro Tem. RAY A. PALMER, Secretary.

"FIRESIDE SERMONS" AT BAPTIST CHURCH

A series of Sunday evening sermons on the home, popularly styled "Fireside Sermons," will be given at the Birmingham Baptist Church by the Rev. David Leon Woodward, minister. There are eight sermons in the series. They will begin this Sunday evening and continue through Sunday, Mar. 16.

The subjects as announced are: Jan. 26, "Lovers and Their Parents," Feb. 2—"Choosing a Mate," Feb. 9—"Love and Money" (On how much we must love), Feb. 16—"Love and Religion" (Shall Protestants and Catholics Intermarry?), Feb. 23—"Companionship Marriage," Mar. 2—"The Ruling Spirit in the Home," Mar. 9—"Children in the Home," Mar. 16—"The Question of Divorce."

One of the interesting features is the Question Box which will be held in connection with this series. All people who have questions pertaining to love and marriage and kindred subjects are invited to place them in the Question Box.

Just inside the church, or mail them direct to the minister. At each service Mr. Woodward will devote a few minutes to answering these questions. Another feature will be the music which will be given by the church choir under the direction of Professor Frederick A. Prothro, director. A brief organ recital will be given by A. Shanley Rosso, organist.

Consumption of sugar in the United States has increased from 80 pounds per capita in 1910 to more than 114 pounds.

A. C. Adams
Funeral Director
807 N. Woodward
Phone 1138

New Funeral Home
equipped to care for the modest funeral at the most reasonable charge as well as the largest and most exacting.

No Extra Charge for Use of Chapel

Ambulance Service

Check these features in the sensational new CHEVROLET SIX

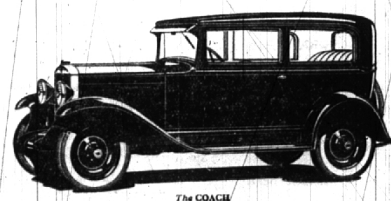
The sensational value of the Greatest Chevrolet in Chevrolet History is based on definite points of superiority—which you can easily check for yourself. From its improved 50-horsepower six-cylinder valve-in-head engine, to its beautiful new bodies by Fisher—it sets a new standard of quality for the low-price field.

A few of Chevrolet's extra-value features are listed on this page. Check them over carefully. Then come in and drive this car. It will take you only a few minutes to find out why it is causing more comment and winning more praise than any Chevrolet we have ever shown. For it is a finer Six in every way—yet it sells—

-at extremely low prices!

The Roadster	\$495
The Sport Roadster	\$525
The Phaeton	\$495
The Coach	\$565
The Coupe	\$565
The Sport Coupe	\$625
The Club Sedan	\$625
The Sedan	\$675

All prices f. o. b. factory, Flint, Michigan
A SIX IN THE PRICE RANGE OF FOUR



Gehring Chevrolet Sales
"Outstanding"
WOODWARD AT RUFFNER BIRMINGHAM, MICH.
Open Nights and Sundays Phone 851

Tremendous POWER in the NEW Firestone BATTERY

Lights—windshield wiper—horn—cigar lighter—starter—all these and more are constantly draining the power from batteries. Firestone Batteries have full thickness extra size plates—extra heavy cell connectors and sturdy hard Rubber Cases. These give you additional power. All Firestone Batteries are guaranteed. Reliable inspection service (free—Drive In Test).

TRADE IN YOUR OLD TIRES NOW
Don't get stuck trying to get the last mile from old tires. You may be ten miles from home. We trade the old ones in and accept them as part payment on new Firestone Gum Dipped Tires. Guaranteed tire and tube repairs.

POWER—LONG LIFE—DEPENDABILITY
KLINGENSMITH TIRE CO.
TEXACO GAS STATION
"Open All Day Sunday"
SOUTH WOODWARD AVENUE AT FRANK STREET
Texaco Gasoline - Oils - Washing - Greasing - Tire and Battery Service
For Road Service - Telephone 772

DUTTON The Dependable AUTO GLASS

Auto glazing requires specialized skill of a high order. If the glass in your car is broken, you can have it replaced here by glaziers who are acknowledged experts in this class of work. Glass set here is guaranteed to equal the original job from every standpoint of high quality and superior workmanship.

Dutton's Top & Glass Shop
159 Brownell St.
Phone 264

HYDRAULIC SHOCK ABSORBERS
Four Delco-Lovejoy hydraulic shock absorbers on all models eliminate road shocks and increase comfort.

50-HORSEPOWER MOTOR
A great 50-cylinder motor, increased to 50 horsepower, gives a smoother, quieter operation, with greater power.

BRONZE-BUSHED PISTONS
The stronger, lighter pistons are bushed with high-grade bronze to provide smoother operation and longer life.

NEW HOT-SPOT MANIPULATOR
A larger hot-spot manipulator insures complete exposure of fuel—improving performance and efficiency.

STRONGER REAR AXLE
Larger and stronger rear axle gears—made of the finest nickel steel—add to durability and long life.

NEW ACCELERATION PUMP
A new automatic acceleration pump provides the backing acceleration which modern traffic necessitates.

WEATHER-PROOF BRAKES
Fully-enclosed, internal-expanding, weather-proof brakes assure positive brake action at all times.

GASOLINE GAUGE ON DASH
The instrument panel carries a new grouping of the driving controls—including a gasoline gauge.

NON-GLARE WINDSHIELD
The new Fisher body-angle windshield deflects the glare of approaching headlights.

LARGER BALLOON TIRES
New, larger, full-balloon tires with smaller wheels improve roadability, comfort and appearance.

TWO-BEAM HEADLAMPS
Two-beam headlamps controlled by a foot button, give the driver control without dimming the lights.

ADJUSTABLE DRIVER'S SEAT
All closed models have an adjustable driver's seat—turns the regulator gives the proper position.