

**DEDICATE NEW SANCTUARIES**  
Conservation Commission Accepts 160 Acres in Bloomfield Township

Lansing, April 17.—Nine new Wildlife Sanctuaries containing 912 acres were dedicated by the Conservation Commission at its April meeting.

Of the nine sanctuaries dedicated, eight were dedicated for the first time, and one was a renewal of a dedication on which the previous time limit had expired.

The new sanctuaries are:

Charles R. Luckin, Oakland County, Bloomfield Township, 160 acres for five years. Eighty acres of this sanctuary are presently dedicated; Edward Daniel, Menominee County, Menominee Township, 15 acres for six years; City of Menominee, Menominee County, Menominee Township, 80 acres for five years; Frank J. Fowler, Macomb County, Shelby Township, 160 acres for five years; W. H. Langdon, Clinton County, Lebanon Township, 80 acres for five years; Floyd C. Reynolds, Shiawassee County, Shiawassee Township, 140 acres for five years; E. J. Morris, Berrien County, Niles Township, 120 acres for five years.

Renewed dedication was: Sisters of Order of St. Dominic, Kent County, Grand Rapids Township, 25 acres for five years.

**THE RESURRECTION**  
The International Uniform Sunday School Lesson for April 28. The Resurrection a Reality.—John 20:1-16.

OUR lesson deals with the beautiful story of the coming of Mary Magdalene to the tomb of Jesus early in the morning and finding the stone rolled away. Perplexed and troubled, Mary hurried to Simon Peter and to John, breathlessly telling of her discovery. Vigorous John outran impulsive Peter and reached the tomb first, but only looked in while Peter, at ways ready and daring, went right into the tomb.



The human touches and contrasts in the narrative are very interesting. Not only have we the suggested temperamental differences between Peter and John, but we have an impression of the delicacy of the deeper devotion of mournful Mary. The two disciples had gone away to their house, but Mary lingered and stood outside the tomb weeping. It was here that she had the vision of two angels seated one at the head and one at the feet of the body of Jesus had lain, and then as she turned away after responding to their questioning, Jesus repeated their question, "Woman, why weepest thou?" and revealed himself to her.

Recognizing the Divine It is interesting that Mary should have supposed him to be the gardener, and somewhat strange that she should not have recognized his voice even though in the probable dark of the morning she might not have sufficiently discerned his form. Is not that too suggestive of the way in which the divine touches our lives? It is so close to the human and to our human impressions, and so often we are discovering God when we had looked only for something with human limitations.

The title of our lesson, "The Resurrection a Reality," suggests the question in what sense it is a reality. Is our belief in the Resurrection merely a belief in the integrity of the records, or is it a deeply spiritual faith? Could we believe in the reality of the risen Lord if some day we should become convinced that these appearances after his death, so very real and convincing to the disciples, were spiritual rather than physical? Has the Resurrection for us some deep

**FROM THE ECCENTRIC COLUMNS**  
—of Long Ago

Bits of News Cleared From Old Files Of The Eccentric—The Items That Make Up The Historical Background Of The Birmingham Of Today.

**FIFTY YEARS AGO**  
Harrison Hyde, of Southfield, met with a serious accident on Friday last. While driving his horse started and he reached for the lines, which were fastened to the front of the rack, the front wheels dropped into a ditch and losing his balance he fell between the hay and the horses, who then started on a run, and before they could be stopped Mr. Hyde was considerably injured, one of his legs being broken, besides internal hurts.

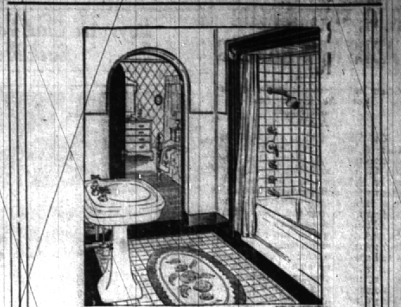
John Allyn says somebody has been walking around on top of his feet. He didn't catch 'em at it but saw their tracks next day.

John Stanley has bought the house and lot between his foundry and the Presbyterian church of Mrs. Olive Bloomberg for \$450.

**TWENTY-FIVE YEARS AGO**  
I dropped into church the other night just as one of our citizens was saying: "So many sinners are dying every day. I have come to the conclusion that hell is full. He sat down, and a wag in the corner started the hymn, 'There's a place reserved for you, brother, a place reserved for you.'"

Congratulations will soon be in order. Cards are out announcing the marriage of Mr. Seymour Adams and Miss Annie Miller, both of this place, on Wednesday, March 1.

Chas. K. Latham, a prominent attorney of Detroit, has purchased the "Burnbrae" farm from Mr. McVittie, who is also a Detroit. After securing "Burnbrae" farm Mr. Latham bought eighty acres from Hiram F. Daniels which adjoins "Burnbrae." Things run along as Mr. Latham



**Your Guests Judge You!**

There is no other part of the home that is so susceptible to criticism from your guests as is the bathroom. You may avoid much embarrassment by modernizing it. Kohler of Kohler fixtures will offer economical modernization.

**W. H. MILLER**  
PLUMBING AND HEATING  
259 E. Maple Phone 532-W

**GOLDEN DAYS** by Evans



Moulthrop's Long Bell Lumber is what it seems. Grade A of carefully selected and carefully graded lumber. It is always a good money's worth.

**R.C. Moulthrop Lumber Co.**  
LUMBER And BUILDERS' SUPPLIES  
PHONES 1 and 2 BIRMINGHAM

**Bo BROADWAY**  
By JOSEPH VAN RAALTE

By Central Press  
New York, April 17.—It's tough to walk hand in hand with Memory, and the old Winter Garden, and past the house converted into a Movie House.

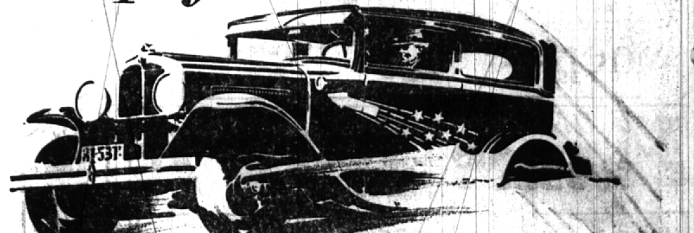
The stage door on Seventh avenue that used to face the car horns along since converted into the Hotel Manger and Rosy's Theater) is being metamorphosed into a box office and the dressing rooms in which so many stars "made up" and so many embryo stars learned the show business are being revamped into "additional seats" for patrons of the squawks.

In the five years that ensued from 1925 some of those who played the Winter Garden were Al Johnson, Alice Delysia, Nat Nazario, Jr., Ilora Hoffman, Allan Pyor, Jean Crawford, then Lucille La Tour, Nancy Carroll, Lulu McCannell, Rogers and Brennan Phil Baker, Mistinguette, Cleo Mayfield and Cecil Lean, Billy B. Van (now in the soap business), George LeMaire, James Barton and Jack Oakie.

I can't help repeating it: Lord, Lord, what a foolish thing time

**The Red Rocket**

a demonstrator of Pontiac's finer performance



Beginning today, you'll see the car with the RED ROCKET on the streets and boulevards of this city. It is a New Series Pontiac Big Six, marked with a RED ROCKET to symbolize its remarkable speed, pick-up and power. This demonstrator is on the streets for two reasons. First, so you can obtain a vivid impression of its speed, its quick getaway, its smoothness and easy handling. Second, so you can receive a demonstration on the spot—anytime, anywhere you see this car. We want you to take the wheel. For only in this way is it possible to realize what excellent performance you can now enjoy in this new low-priced six!

**SPEED AND POWER.** Pontiac's 60 horsepower engine, with 200 cubic inch piston displacement, is the largest in any six of its price. This accounts for Pontiac's exceptional top speed, its swift acceleration, and its abundant power on the hills.

**SMOOTHNESS.** This engine is also very smooth because of its new-type rubber mountings and its Harmonic Balancer which counteracts torsional crankshaft vibration.

**EASY HANDLING AND RIDING.** A new steering system acting on roller bearings and improved four-wheel brakes make this car delightfully easy to handle. And riding is unusually smooth, thanks to its comfortable new Fisher bodies with mohair upholstery of excellent quality, and improved Lovejoy Hydraulic Shock Absorbers.

Now ask to drive the car with the RED ROCKET. Or come to our salesroom, where you can learn about Pontiac's reliability, economy and long life. A demonstration will show you what splendid performance Pontiac now is offering at very low cost.

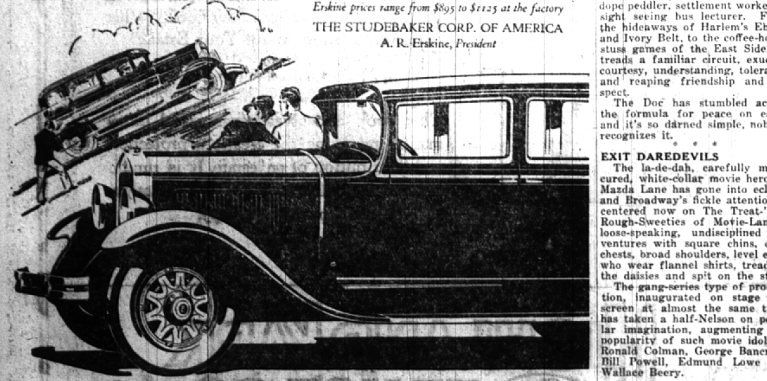
The New Series Pontiac Big Six, \$745 and up, 100 Pontiac, Mich., plus delivery charge. Shows standard equipment. Bumpers and spring wires of light extra cost. General Motors Truck Sales Plan available at minimum rates.

Consider the delivered price as well as the list price. Price when comparing automobile values. Pontiac delivered prices include only authorized dealer for freight and delivery and the charge for any additional accessories or financing desired.

**Feat after feat demonstrates power of DYNAMIC NEW ERSKINE**

**\$364 DOWN**  
4-DOOR SEDAN  
Hill, near El Paso, Texas, than any other car ever went. These and many other recent spectacular feats, certify that the Dynamic New Erskine, built by the Buick of Champions, is champion at its own right—entirely worthy of its 28-year-old heritage of quality.

Erskine prices range from \$955 to \$1225 at the factory  
THE STUDEBAKER CORP. OF AMERICA  
A. R. Erskine, President



**Claude E. Mosher, Inc.**  
160 W. MAPLE AVE., BIRMINGHAM PHONE 1450  
Tune in "Studebaker Champions" Sunday Evening 8:15 to 8:45 Central Standard Time.  
Station WWJ and NBC Network

**BUILT BY STUDEBAKER—BUILDER OF CHAMPIONS**

**THE NEW SERIES Pontiac big \$745 and up**  
PRODUCT OF GENERAL MOTORS... BODY BY FISHER  
**Shaw Motor Sales**  
912 SOUTH WOODWARD PHONE 1160