

# The Birmingham Centric

PART TWO

FIFTY-SECOND YEAR—NO. 30

BIRMINGHAM, OAKLAND COUNTY, MICHIGAN, THURSDAY, NOVEMBER 7, 1929

\$1.50 PER YEAR—SINGLE COPIES 5c

## SAMARITAN DRIVER FREE AFTER CRASH

Involuntary Manslaughter Charges Dropped in Justice Court

ACCIDENT INVOLVED 3

Charges of involuntary manslaughter placed against John E. Webster, 17409 Lumpkin avenue, Detroit, following an automobile crash Aug. 25 near Birmingham are dismissed today following his examination Thursday before Justice John W. Rowe, of Royal Oak township.

While rushing Daniel Machilla, a passenger in an airplane which was wrecked at Fifteen Mile road and Dequindre avenue, to a hospital Webster collided with a machine at Fifteen Mile and Crooks road, killing Miss Anna Orr, 23 of 1714 Bassett avenue, Royal Oak. Miss Orr was a passenger in a machine driven by Lawrence Kludy, 23 of Shelby at the time of the accident. Kludy sustained serious injuries. Machilla also died after the crash.

## MANY VISIT STATE PARKS

Lansing, Nov. 6.—The State Parks of Michigan were visited by 745,741 people during the season just closed. This is an increase of 39 per cent over the number of visitors in 1928 and represents more than twice the population of the entire State.

These figures are contained in a report prepared by P. J. Hoffmaster, superintendent of state parks, and are based on actual attendance records submitted by the superintendents of the 53 state parks that were open to the public during the season of 1929. The total represents only those visiting the parks before October 1, when compilation ceased.

During the season of 1929, 135,308 men, women, and children camped at the state parks, representing an increase of 8.5 per cent over last year. They built 40,181 camps. Of these camps 32,013 were those of Michigan residents and 8,168 were of other states.

Every state in the Union was represented at the state parks. Campers from one foreign country, Transvaal, South Africa, registered.

Upon comparing our attendance, both visitors and campers, further with our records of last year, we find that the increase is fairly consistent throughout all of the parks. Mr. Hoffmaster said in his report, "Two or three of the parks in Oakland County took a rather spasmodic jump which I attribute to the opening of new roads, additional improvements and increased knowledge about these outdoor areas."

Hardly Worthwhile—I shall allow my daughter a hundred a year when she marries. — That's very fair, sir. And what were you thinking of allowing her husband—London Opinion.

Try An Eccentric Classified Ad.

## WHAT'S WRONG AND WHERE?



How good are you at finding mistakes? The artist has intentionally made several obvious ones in drawing the above picture. Some of them are easily discovered, others may be hard. See how long it will take YOU to find them. For a list of artist's errors see page five of this Section.

## OAKLAND COUNTY NEWS

Ralph Hosmer son of Mr. and Mrs. Gar Hosmer, of Oxford does not claim to be much of a hunter, but the first time he ever purchased a small game license was this year and when he returned he had five bunnies, two chickens, pheasants and five fox squirrels, which well repaid him for his time and money spent for a license.

Flames, believed to have started from electric wiring, at 3 o'clock Saturday morning, destroyed the cottage home at Cranberry Lake, on the Lakeville-Rochester State Road, occupied by Russell Pierce and A. C. Burns, forcing the two men to escape, lightly clad, after being awakened by the roar of the blaze.

Loss of the affections of his 18-year-old wife, Floyd Young, Pontiac automobile worker, sued his in-laws, Gordon Raycraft, for \$10,000.00. A jury decided no cause for action in the case.

"Alda Haggadone of the Arnold School east of Oxford has won the distinction of being the County Champion of the 4-H Food Study Clubs in Oakland County. Food Study is the project the girls study in the summer and consists of learning to cook many different types of foods as well as learning more of the correct combinations of foods. Each girl keeps a notebook and record of her work.

Alda will attend Boys and Girls Club week to be held in East Lansing in July. Only champions are eligible and Alda will represent Oakland County in the Food Study work. Other champions will be selected from the Clothing Clubs which are conducted during the winter.

The South Lyon High School Band has been enlarged this last week by four new members. Conrad Havel has purchased an alto, Arnold Cogger a clarinet, Gibson Salisbury a piccolo and Frank Van Atta is playing the bass drum. For the benefit of members of the band who live in the country, time of practice has been extended to during school hours. Improvement is already noticeable.

Mrs. Larry Viner, 21, of Royal Oak was able to leave the Haver-shaw Private Hospital, Sunday, where she had been convalescing from an automobile accident which occurred near the Richards farm east of South Lyon Saturday afternoon. She lost control of her coach and the car turned over and landed up against a tree. She had been enroute home from Strawberry lake.

Because of a Boy Scout law which states that a boy must remain a first class scout for a year before being promoted to a higher one, the obstacle which prevents Marvin Terry, of Rochester from becoming an Eastern scout eight months after joining the movement.

Unhealthy conditions created by exhaust gases within the buses of the Eastern Michigan Motorbus company, irregularity of schedule and overcrowding on buses will be discussed at a meeting of the city and village managers of Royal Oak Township, proposed by City Manager Jay F. Gibbs of Ferndale.

John C. Ubna was sleeping Wednesday night in his home, 221 Groveland avenue, Royal Oak Township, when his wife returned home with the children. She saw the roof ablaze as she approached. Township firemen extinguished the fire, which caused about \$25 damage.

Rev. F. E. Ogle, for the last four years pastor of the Holy Presbyterian Church, has accepted a call to the Decker, Mich., church, and will soon take up his new duties.

With Mrs. Ogle and members of the family, the pastor was honored, first of the week, at a pot-luck supper and farewell gathering, in the church dining room.

Inclination of his wife, Emma Henry, 47 years old, Royal Oak, to use him for a target became so annoying that he was compelled to have her arrested, John Henry states in a bill for divorce, filed in circuit court today. Henry charges that his wife attempted to kill him three times and that on two occasions he has been wounded in the gun from her. A few months (Continued on Page 5, Part 2)

## FREE SUSPECT IN LOOTING OF STORE, SCHOOL

\$800 in Equipment From Music House Is Recovered

SCOUT FUNDS ARE GONE

A suspect, held in the looting of the Grinnell Bros. music store on south Woodward avenue of musical instruments valued at \$800 is released today after the property was found by police hidden in the rear of the store. The thieves entered Thursday night by forcing a rear window. They looted the store, selecting with care, the higher priced instruments which they hid in the alley, intending, police believe, to return later and carry them away. The suspect could not be implicated in the crime. Two other thefts were reported Friday. A radio was taken from the McKinley school, Ten Mile than

## POLICE BUSY DURING MONTH

Twenty-six Accidents Reported in Village During October

A total of \$339.45 was collected by the police traffic violation bureau in fines from autoists during October, the monthly report issued today by Chief Orra J. Tuttle shows.

Twenty-six accidents are reported for the month, seven arrested for driving drunk and eighty-one for speeding. Two cars were reported stolen and two others recovered. Tread-bird for Muscle Shoals, Mississippi brought 11 persons to court the day after the hunting season opened.

Lodgers in the police station were more numerous with 11 persons applying for a place to sleep. Henry Ford turns down the suggestion that he make another bid for Muscle Shoals. But maybe some day he will buy it and add it to his Dearborn museum of historical relics.

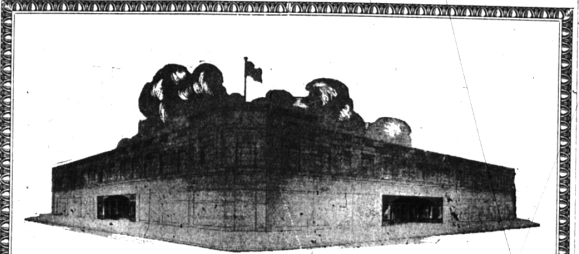
## PHYSICIAN SPEAKS AT ROTARY MEETING

Dr. Harold R. Roehm, local physician, spoke to fellow-members of the Birmingham Rotary club Monday noon on international relations, using as a background his observations of several European countries.

George S. Yaple, executive secretary of the Birmingham Community House, was accepted into membership by the club Monday.

A number of local Rotarians are planning to attend an international meeting of Rotarians of this District to be held next Monday noon at Windsor. At the meeting a famous Englishman, Sydney Pascall, will speak.

Michigan produces more beans than any other state.



Our New Home When Completed—Woodward and Maple

## 30 YEARS

--- And Now Expansion

A GLORIOUS past . . . firmly built upon 30 years of conscientious service, and now expansion to a finer, greater, and larger Birmingham Department Store. An enviable future . . . with the guidance of sound experience and the energy of the present. That is the history of the Birmingham Department Store, a history concurrent with the development of Birmingham itself, through which the motivating force has been an insatiable industry.

YET through all the vicissitudes of this development . . . through the transition from a life casual to one dynamic, the Birmingham Department Store has maintained a single standard of quality . . . of service, in which the individual has always been placed in advance of the machine . . . in which graciousness has been on an equal plane with efficiency. With the increased scope of an organized power, none of the primary courtesies has been lost nor the personal consideration omitted.

AND so, in the new Birmingham Department Store the exacting women of Birmingham may be assured of the greatest possible advantages at the lowest possible cost . . . of fashions impeccably correct . . . of quality honestly upheld . . . of standards constantly secured. In other words, the personal service of the past coupled with the greater merchandising opportunities of the present!

R. E. Davidson

WATCH FOR OPENING

L. E. Davidson BIRMINGHAM DEPARTMENT STORE Birmingham's Foremost Store

Whatever Your Type . . . You'll Find

## COATS

That Flatter You

\$18.75 up to \$53.50

No matter what your style, you will find a coat to suit you in this showing of smart winter coats, for they interpret the mode with such an infinite variation of line that every individuality is expressed. Your coat is the foundation of your winter wardrobe, therefore the new fashion lines, higher waistlines, and the molded silhouette are important. Choose yours here.

## FROCKS

are Feminine Again!

\$13.95 Values to \$26.00 Others at \$8.95

Especially for afternoon or street wear should frocks be feminine. Whether it is expressed in a swirling, flared skirt, an irresistible, fitted waist, pert bosom or effete touches of lace . . . fashion insists on being feminine . . . and we must acknowledge the wisdom of her most enchanting choice! Silk crepes, velvets and chiffons.

## Accessories too

must express the new style trend

Smart Bags

interpreting the season's new formalities! So of course you'll choose one in brown or black to complement your new ensemble, especially when the styles are so intriguing and the price is only \$2.95 to \$12.95

Chic Hosiery

Phenik and Ruby Ring There's a new shade of misty brown for wear with brown, red, blue, and green, without which your wardrobe is not complete. In dainty sheer chiffon they lend a note of charm to any costume. \$1.00 to \$2.95

## New Silk Lingerie

that follows the graceful new silhouette lines. Splendid quality silk in a variety of lovely styles. Tailored garments with self trim drusy types with lace and rose buds in all the pastel shades. Chemises, step-ins, bandeau sets, bloomers, costume sets.

## Dainty Handkerchiefs

Small, but having its place in the ensemble is the handkerchief. These are of linen, with border designs, daintily embroidered corners, initialed corners, and lace trimmed.

L. E. Davidson BIRMINGHAM DEPARTMENT STORE Birmingham's Foremost Store

Open Evenings For Your Convenience

## Careful Drivers

Welcome this superior automobile policy which saves them one-half on collision insurance costs. Let us demonstrate this and other new features.

BIRMINGHAM & BINGHAM REAL ESTATE INSURANCE

BIRMINGHAM Telephone 2000