

# OLD RESIDENT OF TROY DIES

### Funeral Services For Frank Harris, 75, Were Held On Tuesday

Frank E. Harris, long a resident in this community died Nov. 16 at his home near the Sixteen Mile and John R. roads.

Mr. Harris was born at Troy in 1854 and lived there nearly half a century, except for a few years in Chesaning, Shiawassee County.

In 1875 he married Miss Susan Schauban and in 1902 moved to Big Beaver where he lived until his death last Saturday.

Funeral services were conducted at his residence last Tuesday with Rev. R. J. Chase of Washington. Burial was in the Union Cemetery.

Surviving are his widow, Mrs. Susan Harris; daughter, Mrs. George Lamb of Pontiac; two brothers, David, of Oregon and Charles of Chesaning and a sister, Mrs. Lillian Hank of Minnesota.

### SPEEDER FINED \$20

George McClellan, of 421 Parkway avenue, Flint, paid a fine of \$20 Monday when he was found guilty of reckless driving by Judge Floyd S. Buck after patrolman Isma Banks of the Bloomfield Hills Police testified that McClellan sped 50 miles an hour against a red traffic signal at Woodward avenue and the Long Lake road. Patrolman Isma Banks added that he overtook McClellan only after a lengthy chase that ended in Birmingham.

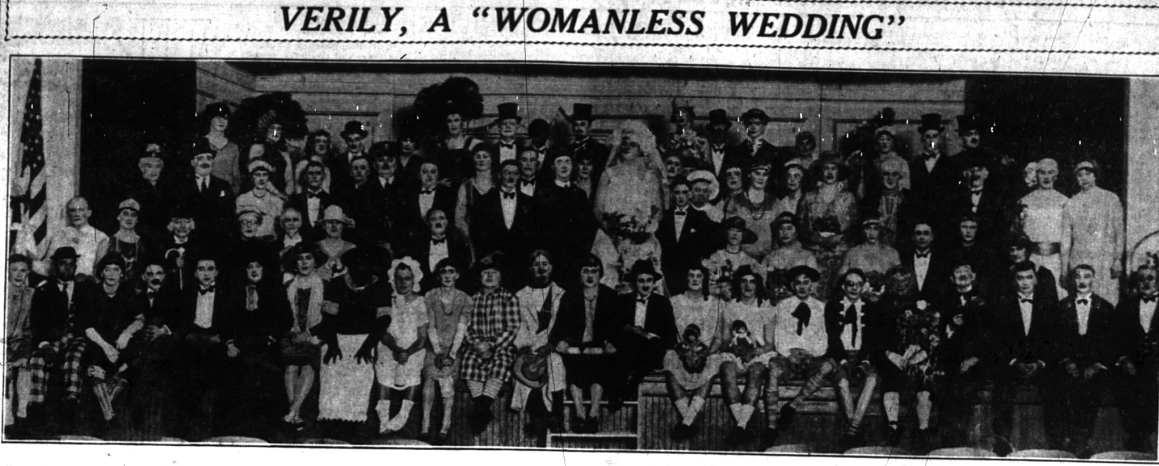


Photo By Arnold

# VERILY, A "WOMANLESS WEDDING"

From left to right: (bottom row) Fred Kemp, G. Dewey Kimball, Paul Averill, James Kelly, Russell Kneale, Joe Dalley, Carl Eley, Wilham G. Olsen, Dr. G. R. Norton, Frank Mulholland, Victor Peck, P. D. Aristos, James Anderson, Floyd Swayze, Eugene Smith, James McGann, Melvin Deer, Tom Schooley, S. O. Wylie Bell, Sam Howling, Fred Quarton, Tom Jones, Rev. E. M. Atkins, (second row) E. A. Heacock, James Taylor, Ernest Petrie, H. B. Winesgar, M. J. Withes, C. E. Botsford, J. E. Stroup, G. W. Jones, R. B. Aldrich, Russell Hayes, William G. Schwelbe, Lloyd Teets, Joe Green, (third row) J. W. Cobb, C. Matthews, Phil Williams, R. D. Bird, Bert Brown, Fred Seeman, John May, Schultz, O. J. Tuttle, W. N. Berger, V. W. Griffith, Frank Deer, Dr. Joseph Maunders, Charles L. Park, J. Martz, E. B. Root, H. T. Ellerby, R. B. Ryder, Kenneth Green, O. S. Wagner, Arthur Claxton, Frank Campbell, R. S. Hull, R. H. Lee, J. H. Ross, L. H. Wilson, L. R. Reid, George Anderson, (top row) William Spence, W. L. Moreland, Kenneth Bingham, Walter Schwaartz, George Steelman, M. M. Morgan, Al Brown, E. W. Allen, Stuart Cobb, See Bird, Emerson C. Williams, R. D. Bird, Bert Brown, Fred Seeman, John May, Schultz, O. J. Tuttle, W. N. Berger, V. W. Griffith, Frank Deer, Dr. Joseph Maunders.

# MEN! MEN!

--Real Shaves--  
In Your Own Razor



10c EACH Pkgs. of five 50c 12 for \$1

Hurry and join the crowds of happy shavers that are getting smooth, quick shaves from these newly arrived blades.

## WADE & BUTCHER

SPECIAL  
Curved Blades

A Product of WADE & BUTCHER  
Makers of fine Sheffield Cutlery, Carvers, and Razors for over 200 years.

# SHAIN'S DRUGS

Phone 61 WE DELIVER West Maple



KOHLER OF KOHLER  
We're the folks to see for bathrooms

If it's a new house, see us. If it's an old house with an out-of-date bathroom to be made modern, or an extra bathroom to be added, we're at your service.

We will show you how to lay out your floor space for utmost comfort and convenience—we'll give you color suggestions for walls and floors. And we'll promise you, in the Kohler fixtures which we recommend, plumbing ware as fine as money can buy—at very reasonable cost.

Ask us about new plumbing for kitchens, lavatories, and laundries, too. Glad to come and see you any time. No charge for estimating.

## W. H. MILLER

PLUMBING AND HEATING  
259 E. Maple Phone 532-W

Masculine Birmingham sneezes today as it dreams of two nights of adoring audiences with their thundering applause, of the backstage Johnnies with their gifts of jewels and orchids. Masculine Birmingham sneezes and attacks another stack of fan mail and all because of the tremendous success of "The Womanless Wedding," staged last night and Tuesday at the Baldwin High School.

The production which featured a cast of nearly 80 Birmingham men was staged by Miss Ruth Hamman under the sponsorship of the Women's Society of the Methodist Episcopal Church.

In all but one respect the play

didn't function regularly. It of longest run was made by Hunt of Baldwin, who, with good interference, galloped down the field from his own 10 yard line to the 42 yard line for 32 yards.

Miriani was plainly the outstanding star for the Hazel Park team. He led many hard attacks and gained much ground. He broke away for 22 yards on one occasion, once for 14 and again for a first down.

**Block Enemy Passes**  
Birmingham did one thing and did it well, and that one thing was covering enemy pass receivers. The Hazel Park eleven's hope to overwhelm the Maroon team with the same that enabled its team to walk off the field victors in many games this year. But the attack didn't succeed with the Baldwinites. It was completely demolished and only once did the opponents complete a pass. Brien intercepted a pass in the first half but was downed before he could make any headway in turning the passes from the opponents. Birmingham has remedied an error that was pronounced throughout the season and caused the loss of the game to Forsion.

Loss of ground was frequent for both teams. Hazel Park's longest loss proved costly. The team was forced from the 13-yard line back to the 25 yard stripe where Miriani missed a field goal by yard. The Maroons forfeited 10 yards at one time for their biggest loss of the game.

The first half of the game featured reciprocation of punts. "Herm" Schwarze averaged better than Miriani. He punted 55 yards against the wind while Miriani's longest kick in the same direction was 40 yards.

In the last part of the second quarter Hunt got away for a spectacular 32 yard run and then slipped along the field for 10 yards more and another first down.

**Teams Battle Evenly**  
Both teams struggled for a break in the third quarter but none came. Hazel Park intercepted a 20 yard pass from Birmingham but only returned it seven yards. From the 15 yard line Hazel Park took a five yard penalty for off-side and on the second play after lost 12 yards.

SAVE WITH SAFETY  
LOOK AT OUR

The Rexall Store

Guaranteed for Two Years—Lasts a Lifetime.

KANTELEK Hot Water Bottle \$2.50

As far as we know this is the only brand that is guaranteed unbreakable for two years. But you'll get more service than that. Because KANTELEK is made of pure Para rubber in one piece without seams or patches. It just can't leak. Sold only at Rexall Stores.

Horse Manure and Black Dirt For Sale

Delivered and Spread

Phone B'ham 9082  
OAKLAND HILLS RIDING CLUB

SHAIN'S  
The Rexall Store  
West Maple Avenue  
Birmingham, Mich.

# Announcement

NOW—An Exclusive and Popular Priced  
Hosiery Shop Conveniently Located  
for Birmingham Women

## The TWIN HOSIERY SHOPS

Volume buying now brings to Birmingham women fine hosiery, lingerie and handkerchiefs at prices much lower than usual for merchandise of quality. This new little shop in Birmingham is one of a group already popular with many Detroit women. You are cordially invited to visit us on our opening day!

### Three Opening Specials

<b>Handkerchiefs</b> Hand embroidered, imported handkerchiefs of pure linen... your choice of hem-stitched, lace, or tatted edge.	<b>HOSIERY</b> Picot top, sheer hosiery of 45 gauge pure silk chiffon with the slenderizing French heel.	<b>Lingerie</b> Chemise, dancettes, and step-ins of heavy quality crepe de chene... pure vat dyed—they come in all the popular shades and sizes.
OPENING DAY ONLY! SIX FOR \$1.00	OPENING DAY ONLY! <b>\$1.00</b>	OPENING DAY ONLY! CHOICE \$2.45

# TWIN HOSIERY SHOPS

GIFTS For the Ladies On Our Opening Day

In appreciation of your visit you will be presented with a beautiful handkerchief. . . . Come in on our opening day—Saturday, November 23rd.

Beautiful Costume Jewelry and Bags

A large selection of costume jewelry and bags will be on display. . . . in styles and colors to enable you to match your ensemble! . . . Very popular as Christmas gifts!

## Opening this Saturday, Nov. 23rd

IN THE  
**First State Bank Building**  
Woodward Avenue - Just North of Maple

You can afford to carry

## COLLISION INSURANCE

under our participating plan  
Full coverage to the careful driver  
At a Saving of 50%  
The Details Are Interesting

## OAKLAND REALTY CO.

THOMAS D. LYNCH, Manager  
REAL ESTATE and INSURANCE  
Levinson Bldg.  
BIRMINGHAM, MICH.  
Phone: Office 143-W, Res. 143-R