

New Telegraph Road Section Is Opened

1930 PAVING PROGRAM IS ANNOUNCED

Plans Curtailed To Keep County Taxes Low; Plan 36 Miles

NEW ROUTE TO TOLEDO

Opening of the new Telegraph road between the Square Lake and Long Lake roads and announcement of plans to pave 36 miles of county roads next season are the outstanding events of the Oakland County road commission this week.

The Telegraph road 40 feet wide now opened, offers a new connecting link with Toledo over the following route: South on Telegraph road from Orchard Lake avenue to Long Lake road; east on Long Lake road three quarters of a mile to Bedford road; south on Bedford road to Seven Mile road; west on Seven Mile road to Telegraph road; continuous on Telegraph road into Toledo.

Program Curtailed
Program for building roads next spring is curtailed to keep the county taxes low. The total to be expended is approximately

two and one half million dollars, about half of last year's total. Hearings will be held on the proposed improvements in the spring and it is possible additions to the program will be made during the winter.

Roads which have been petitioned for improvement under the Covert road act and given approval by the Board of Supervisors include the following, to be paved:

Extension of Livernols: Three miles in Avon Township commencing at Auburn avenue and extending north to the Pontiac-Rochester road between sections 28 and 27, 31 and 22 and 16 and 15 of the township. Assessment district 118.

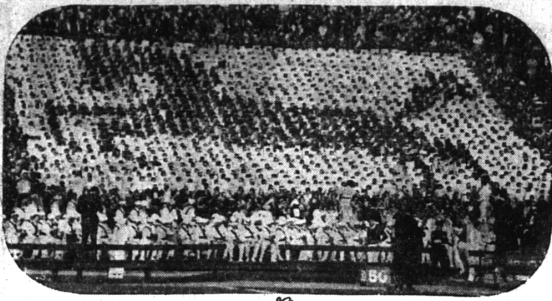
Ten Mile road extension: Along the northerly limits of the City of Farmington a distance of one mile to connect the present Ten Mile road with the Grand River pavement. The route is known as Shawassaw street in Farmington. Assessment district 123.

Sunset boulevard: Extends diagonally in a northwesterly direction from the Eight Mile road to the Twelve Mile road through Royal Oak and Southfield Townships for a distance of about five and a half miles. Assessment district 134.

Stephenson Superhighway: Extends north from the Eleven Mile road in Royal Oak Township to the Rochester road in section 26 of Troy Township, a distance of five and a half miles. Assessment district 140.

Deer Lake road: Connects the Dixie Highway with the Village

It's The Way To Cheer For Southern California



What it takes to make a Trojan war horse, and numerous other designs that add pep to cheering actions, these University of Southern California students have. Their routing section is one of the best organized of any in the country, and this striking design of their symbolical war steed, made with dark cardboard on a white background of light, is but one of many they execute between halves of their football games.

of Clarkston, a distance of 1.2 miles, through Independence Township. Assessment district 142.

Sylvan Lake Link
Garland Avenue: A mile and a half of pavement through Sylvan Lake Village connecting Telegraph road with the Cass Lake road. Assessment district 151.

Nine Mile road: Extends westerly from the Southfield road to Grand River road in Southfield and Farmington Townships, a distance of about seven miles. Assessment district 152.

Scott Lake road: Extends southerly from the Dixie highway on the line between sections 23 and 14, 23 and 24, 24 and 25 in Waterford Township thence easterly to connect with Huron street at the westerly limits of the city of Pontiac. Length of about four miles. Assessment district 156.

Silver Lake road: Connects the Dixie highway with Walton boulevard in Waterford Township on the edge of Silver Lake, a distance of about a half mile. Assessment district 157.

Pontiac road: A half mile connecting link between the Pontiac-Rochester road in Pontiac Township and state trunk line 24, the Pontiac-Oxford road. Assessment district 158.

Beaver road: One mile extension will connect Adams road with Woodward avenue in Bloomfield Township between sections 24 and 25. Assessment district 159.

Pavement Toward Milford
Commerce-Milford route: Four miles of concrete beginning at Commerce village and extending in a westerly direction through sections 10 and 9, Commerce Township, thence west between sections 8 and 17, 7 and 18 to the Wilson road. Assessment district 160.

Roads which the supervisors

WOMAN LAUDS NURSE PLAN

Detroit Social Service Worker Tells Group Of Advantages

The visiting nurse plan, now under consideration by the Birmingham commission as a joint project of the Community House and village, again was brought into the limelight when Miss Alice Walker, head of the social service department of Harper hospital, Detroit, gave it her endorsement in a talk last Thursday before the Women's society of the Methodist Episcopal Church.

Miss Walker explained that although she was unfamiliar with the situation in the village she had seen the value of visiting nurses in other communities.

In her talk she sketched briefly the work of hospital social service departments giving the organization of the department at Harper hospital. According to Miss Walker 50 persons are employed there the social service department which has been in existence 16 years.

Mrs. Leroy Cram of Flint, Mich., has been appointed by Governor Green as the first Woman regent of the state university.

Ten thousand persons turned out for the funeral of Lieut. Edmund Terstansky, champion fencer of the world, who died in Budapest.

TRY IT—without obligation



No one who has ever used a Hoover can deny its ability to clean faster more easily and more thoroughly than is possible with other cleaning methods.

We want you to see this for yourself. We want you to see on your own rugs why its ability to remove more dirt per minute than any other cleaner makes your cleaning lighter and swifter and keeps your rugs from wear.

Telephone for this no-obligation trial. Only \$6.25 down; balance monthly. Liberal allowance for your old cleaner. Model 700 Hoover, \$79.50 cash.

The HOOVER

11 BEATS... as it Sweeps as it Cleans

Authorized Hoover Service By Factory Trained Man

Hawthorne Electric Co. 142 WEST MAPLE AVE. Phone 299

Herbert Baird, 15, of El Paso, Tex., caught with his hands and feet by speaking one line in her bitten 11 school children. He test the words being: "I am just a washwoman, sir, an honorable washwoman."

For Easy Starting

If Your Car Is Hard to Start

STAROLINE

Is Your Friend

Time to change your dope to a wintery grade in our greasing palace.

D. R. TAYLOR SERVICE STATIONS

BIRMINGHAM AND DETROIT

"We value your friendship and appreciate your trade"

Our Finest Cars

- and Time-Proved Four Speed Performance

Through long and successful experience with four speed motor cars, Graham-Paige engineers not only have refined and perfected the four speed transmission itself (two quiet high speeds and *star-dard* gear shift) ... but have developed every detail of motor and chassis construction to bring out the fullest possibilities of brilliant, dependable, four speed performance. In our 1930 line, you now find this *time-proved* feature incorporated in the finest sixes and eights we have ever offered ...

Joseph B. Graham
Robert C. Graham
Ray A. Graham

BIRMINGHAM MOTOR SALES

479 S. Woodward at Hazel Telephone 2025

Sportraits



DALE VAN SICKLE

Dale Van Sickle, chosen by many for all-American honors last year, is continuing his great work at end for the powerful Florida eleven this fall. He is covering himself with glory in one of the toughest schedules a Florida team has ever tackled. They have already met such formidable opposition as Georgia Tech, Georgia and Harvard, and have still to meet South Carolina and Washington-Lee.

have determined to pave under a special state law which permits the local to pave without the filing of petitions, include these:

Franklin road: A half mile connecting link between the southern limits of Pontiac and Telegraph road. Assessment district 150.

Road bordering Orchard Lake between the Orchard Lake road and the Commerce road pavements. Assessment district 153.

One gravel road proposed is: Wildwood road, from the Dixie highway in Grosse Pointe Township to the Narrin road, a distance of three miles. Assessment district 155.

State road construction projects in the county for next year have not yet been announced but will undoubtedly include paving of the Pontiac-Ortonville road on which some work has already been done and completion of the Telegraph road south of Pontiac.

Some work probably will also be done on the northwestern highway in Southfield and Farmington Townships but this is an inter-county project.

On Short Notice
"How long before she'll make her appearance?"
"She's upstairs making it now."

Quite Possible
Bill—Is your engagement to Helen broken?
Boarder—I assume so. She married another fellow yesterday.
—Louisville Courier-Journal

WHY SUFFER WITH COLDS

When It Is So Easy To Prevent Them?

Colds are serious because they so often develop into La Grippe and pneumonia. But it's easy to keep from catching cold, even though one is obliged to work in the same room with someone who is sneezing and coughing. Many people have found that keeping the digestive system in good condition and the bowels open enables them to throw off colds before they even get started.

Mul-So-Lax is a scientific preparation endorsed by physicians and used by hospitals. It lubricates and cleanses the entire intestinal tract, ending constipation and bringing about natural movement of the bowels. Take Mul-So-Lax regularly as directed, and how much better you feel this winter. A large 16-oz. bottle sells for \$1.25 at

WILSON'S DRUG STORE

ENGINEER AIDS DRAIN SURVEY

Statistics on drains are being obtained by Village Engineer Harold H. Corson in conjunction with the county-wide survey under the direction of the county drain commission. Mr. Corson made a trip last week to Sturgis where he inspected a recently constructed drainage plant.

Mrs. Eida Vuolkel of Dallas, Tex., won her chance in the movie by speaking one line in her bitten 11 school children. He test the words being: "I am just a washwoman, sir, an honorable washwoman."

Railways and The Telephone

A freight train puffs quietly on the siding—waiting—the outlines of the cars showing dimly through the darkness. A minute passes—two—three. Then over the night air floats a muffled whistle. Far down the track a light appears. The rails begin to hum, the light grows bright, and a passenger train roars past, windows gleaming. Then the freight comes to life and the long, shadowy outline moves away.

Four million persons in Michigan are served by this steam transport system—four million persons rely upon it, and upon its worthy partner, the electric railway lines. Michigan desires the prosperity of these efficient and progressive railways, for only as they prosper can they serve.

Over hill, across valley—paralleling the rails or following the highways—go the telephone wires, freighted with the spoken commands of industry, agriculture, finance and business.

Railways and wireways traverse the land as partners in progress. Upon the one you depend for the transportation of yourself, your family and your goods. To the other you give your voice to be flashed immediately, one mile or thousands, from your home or your office.

The great rail transportation systems and the universal service of the telephone are vital factors in this country's development and prosperity.

Our policy—"To continue to furnish the best possible telephone service at the lowest cost consistent with financial safety."

MICHIGAN BELL TELEPHONE CO.