

After you pay your village taxes in June or July, don't feel sad, be of good cheer, for as the days get cold and drear you'll have another chance to pay your winter tax.

The Birmingham Eccentric

PART TWO

FIFTY-SECOND YEAR—NO. 3

BIRMINGHAM, OAKLAND COUNTY, MICHIGAN, THURSDAY, MAY 2, 1929

\$1.50 PER YEAR—SINGLE COPIES 5c

PLAYGROUND POST FILLED

Johnson, Former Director, To Leave Village For Summer

Selection of a man to direct activities on Birmingham Playgrounds this summer is made today with Ernest Engel, basketball coach at Baldwin High being appointed. George Johnson, director of athletics at Baldwin High School, and last year's playground director, has announced he will not be in the village this summer. Mr. Johnson has completed arrangements to act as assistant director of the Detroit Athletic club boy's camp at Walloon Lake near Petoskey. The camp opens June 30 and continues eight weeks. It is for boys from Detroit, Birmingham and other communities, between the ages of eight and 16. Mr. Johnson's work will be concerned with older boys. Work of the playground director in Birmingham promises to be broader this summer than previously as the activities are enlarged.

WE HEARD IT SAID BY—
A. Thomas Schooley, of Adams road: "The art of 'gadunking' (I hope I have spelled this word correctly) or dipping various baked edibles into liquids, hot or otherwise, is growing. I understand, among the circles of our high modern civilization. Perhaps this is a good sign, and perhaps it isn't; who can tell? And, if so, why?"

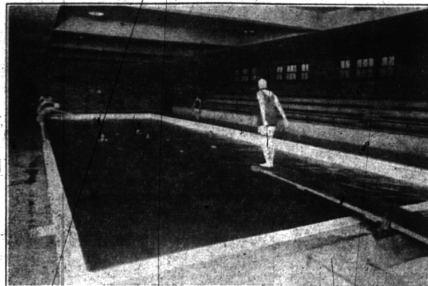
HEALTH DAY IS OBSERVED

County School Children Give Programs With Physical Perfection Theme

Thirty-one village, city and rural schools in Oakland County yesterday observed the annual Child Health Day under the direction of the Oakland County school commissioner's office. The day culminated efforts of the children in writing health plays, correcting physical defects

Views of Proposed Barnum Addition

A view of a swimming pool similar to that designed for the proposed Barnum unit. The pool is 75x25 feet with a standard depth ranging from three feet six inches to eight feet in depth. The proposed pool with the two adjacent shower and locker rooms would constitute the first unit of this kind to be installed in the village. Cost of the pool is estimated at \$25,000.



and in imbedding health habits in themselves and friends.

The programs of the schools follow:

Auburn Heights—Field Day, athletic events for both boys and girls.

Holly—Health, plays, correlation of health, for one week in French and Latin classes; other features.

Daniel Whitfield—Outdoor program, entire afternoon; May Health Queen and attendants; prizes for 100 per cent dental correction; health songs, recitations and plays.

Ortonville—Health play by 5th and 6th grades; original health poems; original slogans by each child.

Donelson—Mass meeting; posture contest, health stories and talks; 100 per cent correction of defects; original play.

Milford Health yells and songs; vegetable parade; health exhibits and plays.

New Hudson—Songs and poems; a play, "The Enchanted May-Pole"; base ball game, Boy Scout program.

Lambert—Health plays; other features.

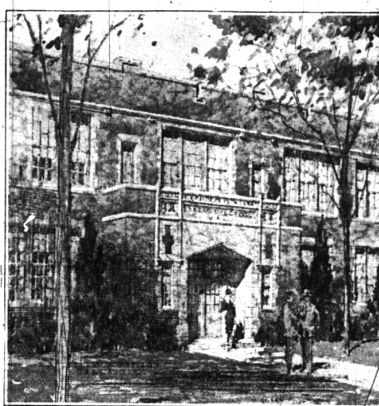
Oxford—Health play written and presented by the 6th grade; slogans; 100 per cent correction of defects.

Springham—Health plays.

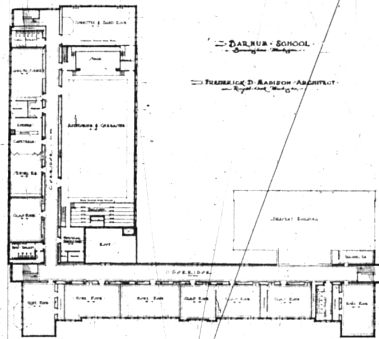
MANY ATTEND AUTO DISPLAY

A large crowd attended the first annual outdoor show of the Birmingham Auto Dealer's association held Saturday afternoon and evening on Henrietta street which was roped off for the occasion.

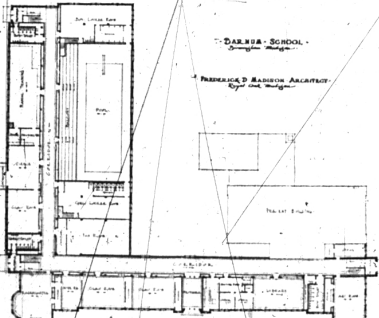
Musie was furnished by the Baldwin High School band and decorations made the display of new shining models more attractive.



Pictured above is the main entrance to the proposed enlarged Barnum School to be constructed at an estimated cost of \$885,000. This entrance would front on Purdy street, with secondary entrances on Frank street and from the athletic field.



Plans for the second floor of combined auditorium and gymnasium, the proposed Barnum unit call for 50,000 sq. ft. featuring a stage, grade rooms, junior high home, dressing rooms and balcony with projection booth. Space beneath the stage is utilized for storage of musical instruments.



The first floor plan for the proposed Barnum school is shown above featuring art room, teachers' room, library, offices, health service, grade rooms, work room, kindergarten, science, manual training, fan room, locker rooms and swimming pool.

Couldn't Fool Him
A tenor, "found" in a factory engagement, ventured to suggest one improvement. "I should like to hear an 'h' or 'l' in the usual ballads on 'art and 'opes and 'appy 'omes." The manager was duly impressed, but with a view to an

An Open Letter

April has been a month of unusual activity in this store—a direct result of unusual value. Birmingham appreciates this store, and we deeply appreciate Birmingham loyalty.

Within a few days our May White Sales will be launched, another typical money-saving event for which this store is well known.

Signed,
R. E. Davidson

P. S. Has every purchase proven entirely satisfactory to you? If not, this store stands ready and willing to make satisfactory adjustment . . . your money if you wish it.

L. C. Davidson BIRMINGHAM DEPARTMENT STORE
Birmingham's Finest Store

"It's Not a Home Until It's Planted"



BEAUTIFUL HOME GROUNDS Really Cost You Nothing

EACH TREE, SHRUB, PLANT AND VINE ADDS FAR MORE VALUE TO YOUR HOME THAN ITS SMALL COST.

THERE is no better investment than beautifying your home grounds! It actually PAYS to live amid beautiful surroundings—to have home grounds that friends and passersby admire.

Every tree, shrub, plant and vine that you plant adds immediately to the cash value of your place. Plant—it pays dividends of cash and happiness!

LET US HELP YOU—select just the right variety for each location. We can supply you with healthy, sturdy stock that will grow.

THE CORYELL NURSERY

1301-1481 W. Maple Ave. Phone 58
BIRMINGHAM

AUTOMOBILE INSURANCE

ALL LOSSES PROMPTLY ADJUSTED

BINGHAM & BINGHAM
REAL ESTATE & INSURANCE

BIRMINGHAM MICHIGAN
Telephone 2000

Our Real Estate Offerings are listed in the Classified advertising columns of this issue.

NEARBY and YONDER

by T. T. Maxey

"God's Acre" Forlorn
DOWN on the lower East side of New York city, almost within the shadow of Brooklyn bridge—on New Bowery street, to be exact, behind a tall iron fence, a tablet carrying the following announcement unexpectedly attracts the attention of the passerby: "This tablet marks what remains of the first Jewish cemetery in the United States, consecrated in the year 1656, when it was described as 'situate in the city.' During the War of the Revolution it was fortified by the patriots as one of the fortresses of the city."

History records that this resting place of the departed was in high esteem for many years, many who were prominent in their day having been tenderly interred therein. But as the encroachments of the commercial activities of the living practically pushed the dead out of their own, many of the bodies were moved to a larger place than far beyond the city confines where supposedly they would remain undisturbed forever. But, as America grew and New York city expanded, this once beautiful place also had to give way to the march of progress.

All that is left of the original cemetery is a small plot of ground, containing probably one hundred tombs of unknown dead. The inscriptions have been worn by time to a state of illegibility, the remains of the elements have badly disintegrated the stones and caused the vaults to crumble in decay. The rear windows of surrounding apartment houses brown upon this hollow spot and an oil station adjoins to the south. A more forlorn sight would be difficult of imagination.

THIEVES STEAL BRASS FROM HILLS SHOVEL

Brass fittings valued at \$500 were stolen Thursday night from a steam shovel owned by the Nelson Construction company and stationed at the Grand Trunk right of way in Bloomfield Hills.

"YOUR PRINTERS" will do your printing promptly, accurately, and reasonably. Call The Eccentric.

To Gather Financial Resources

or in other words, to obtain deposits and business, is one important function of a bank. Another is to so direct those resources that they will best serve to foster and promote the increased prosperity of the community as a whole. This is the function this bank has ever kept foremost in mind. It forms the basis upon which we cordially invite your deposits and your business.

BIRMINGHAM SAVINGS BANK
138 South Woodward