

SPACE ADDED IN NEW VIKING

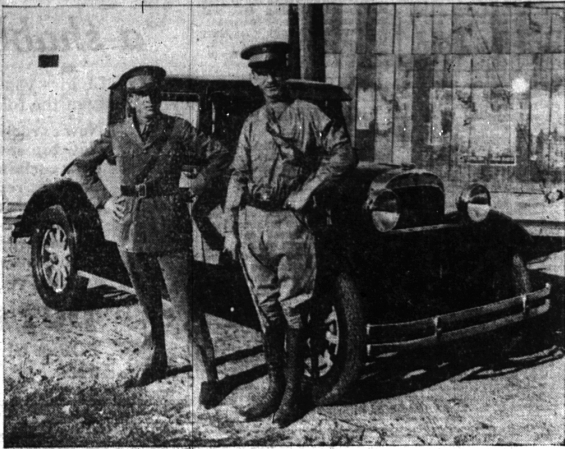
Roominess Is Feature Of New Oldsmobile Model

Roomy comfort is a distinctive feature of the better automobiles of today, and it is a point that is stressed in the Viking, Oldsmobile's latest arrival, the 90-degree V-type, eight cylinder companion to the Oldsmobile Six. Both front and rear compartments are exceptionally large, thus providing riding and driving comfort.

This exceptional roominess, with its resulting comfortable seats and ample leg room, is the result of two factors in the Viking design. One is the long wheelbase of 125 inches, and the other is the use of the V-type engine. The Viking engine is practically two four-cylinder engines opposed at a 90 degree angle working on a single crankshaft. It is, therefore, short and stocky with a length about that of an average six cylinder engine and having a breadth which fills the wide hood compartment.

The space gained through the use of the V engine is utilized for additional room inside the car. Width has been obtained through the design of the Fisher-built bodies which have a graceful outward curve at the sides which increases the width at the seat level. Both front and rear seats are form fitting with an upward slant

Essex the Challenger in War Zone



Here are two of the men who are directing the Mexican Federal troops in their, so far, successful campaign against the rebels in the turbulent country south of the

Rio Grande. General Gasario Medina (left) is in charge of the artillery forces. He distinguished himself in a previous campaign at the battle of Celaya, when Pan-

cho Villa, celebrated Mexican rebel, was defeated. Brigadier General Anselmo Macias (right) is commander of the presidential guards. He is also in charge of the presidential train.

toward the front to give comfortable support under the knees. The backs also are form fitting, being designed to fit the curves of the back. The seats are broad and wide and three adult passengers can be seated comfortably in either the front or rear compartment.

The comfort of the driver has been assured by an adjustable front seat and steering wheel. The seat may be moved forward or backward to suit the individual preference of the driver, while the steering wheel can be adjusted to a higher or lower position as the case may require.

WE HEARD IT SAID BY—
Courtney Johnson, Sales manager, Hudson Motor company: "How far removed from the public be damned! It is interesting to note that hardly any two cities in the rate for the same make of car the same, but it is highly significant that in city after city Studebaker owners enjoy lower theft rates."

based on what might be called the cumulative theft experience of any particular make of car in the particular city where the car is insured," says Claude Mosher. "It is interesting to note that hardly any two cities in the rate for the same make of car the same, but it is highly significant that in city after city Studebaker owners enjoy lower theft rates."

Phone Johnny on the Spot for Building Materials Pham 111-112



If you'd build safely and spend your money wisely—buy your building material from us. When we say we are going to deliver at a certain time you can depend upon it.

Lawson-Erb Lumber Co.
Phone 111-112 624 Forest

ANTI THEFT LOCK GIVEN PRAISE

New Studebaker Appliance Seen As Cut To Insurance Rates

The substantial dollars and cents value of an effective anti-theft lock on your motor car is emphasized by a comparison of

1929 theft insurance rates in effect in several of the larger cities in the United States.

According to Jewell & Mosher, local dealers, the co-incident lock pioneered by Studebaker in 1924 is responsible for low theft insurance premiums which save Studebaker owners as much as \$24 a year per thousand dollars in coverage.

"Theft insurance rates are

TRACKMEN OFF FOR YPSILANTI

Final rigid practices are being made for the annual Regional track meet, to be held at Ypsilanti Saturday morning.

This meet is of importance as only those schools which qualify in the regional meet will be allowed to enter the state meet.

Coach George Johnson's thin-clads are seriously handicapped, he says, because of lack of competition, having competed only two meets thus far. Also there is a lack of available material which is proving a strong detriment to the team, as the school is able to enter only one man in most events, giving the other school the chance of more points than Birmingham in almost every event.

The team journeyed to Ferndale for tryouts Monday evening.

York, running the low hurdles, showed good form, completing the run in 29 seconds. Rollins, who has been running the mile, has been shifted to the 440 yard dash, thus being able to compete on the relay team, which consists now of York, Rollins, Welch, and Porteous.

MORE SCHOOL NEWS ON PAGE EIGHT

Let Us Test Your Battery... NOW

Your battery was in good condition when you bought it. Our men can help to keep it that way. They know the symptoms of overcharging, undercharging or hard use. They overcome a cause before it happens. Let us test your battery periodically and warn you of costly trouble.

Birmingham Battery Service
303 East Maple
Phone 902
Genuine Willard Batteries and Willard Service For All Makes
Ignition and Generator Service for All Cars

News Of Baldwin H. S. And Other Schools

WINNERS IN MOCK ELECTIONS ARE NAMED AT BALDWIN HI

Results of the annual mock election which are not included in that for June are as follows: Fun-

- | | | | |
|-------------------|------------------|------------------|------------------|
| JUNE | George Wasley | JANUARY | Roderick Cox |
| Most Popular Boy | Katherine Mann | Malcolm Otis | Madeleine Holmes |
| Most Popular Girl | Winifred Quorton | Malcolm Otis | Madeleine Holmes |
| Best Student | (George Wasley) | Roderick Cox | Mary Wilson |
| Best Dancers | Katherine Mann, | Madeleine Holmes | Roderick Cox |
| | (George Wasley) | | |
| Prettiest Girl | Dick Fleming | | |
| Handsomest Boy | Margaret Haldane | | |
| Peppiest | Barbara Hill | | |
| Bluffer | Al Myers | | |
| Teacher's Pet | Winifred Quorton | | |
| Giggler | Jean Winhorn | | |
| Man Hater | Marian Ball | | |
| Biggest Walker | Clark Smith | | |
| Flaming Youth | Paul Honore | | |
| Granddaddy | Winifred Quorton | | |
| Grandma | Paul Honore | | |
| Cutest Girl | (Evelyn Payton) | | |
| Flirt | Velma Wilkinson | | |
| Doll | Geraldine Howell | | |
| Best Dressed Girl | Katherine Mann | | |
| Best Dressed Boy | George Wasley | | |
| Actress | Jean Winhorn | | |
| Actor | George Wasley | | |
| Post | Dorin Cox | | |
| Musician | Margaret Strand | | |
| Boy Athlete | Floyd Doherty | | |
| Girl Athlete | Margaret Haldane | | |
| Jester | Clark Smith | | |
| Friendlier | Lucille Hoffman | | |
| Best Natured | (Edward Kurth) | | |
| | Edward Kurth | | |
| Most Dependable | Norma Martin | | |
| Orator | Dick Fleming | | |

JUNIOR HIGH SCHOOLS SHOW IN GROUP MEET; BALDWIN WINS

Offices in the January mock election which are not included in that for June are as follows: Fun-

Birmingham junior high schools last Thursday journeyed to Royal Oak to compete in the last Little Six League track event in which the Baldwin juniors emerged victorious with 44 points. The other teams who participated finished in the following order—Royal Oak 27, Berkley 23, Hazel Park 15 1/2, Adams 10, Lincoln 6 1/2.

By winning this track meet the local athletes have added to the laurels of the school claiming the living cup given to the victor of this event. Ribbons were also given to the first three places.

The summary of the Baldwin competitors is as follows: In the heavy weight class:

- BALDWIN GIRLS DROP FIRST**
- The Baldwin High School girls' basketball team met with the first defeat of the season last Thursday when they were downed by the Halfway nine 28-14.
- The local team was leading until the disastrous fifth when Halfway scored 19 runs, obliterating all chances for the local squad to win. All went well until an error was committed and then the local pitcher cracked and with her the rest of the team blew up. Due to this unlucky inning the locals have to win all the rest of their games to even tie for a hold of the cup. In order for the first place tie the locals will have to defeat the Hazel Park team who has won all games this season.
- According to all reports this week the whole team has been worked on and strengthened in a much better condition for the Hazel Park game today.

FATHER W. W. RYAN TO GIVE ADDRESS

Father William W. Ryan, pastor of the Holy Name chapel, will give the Baccalaureate address for graduates of Baldwin High School at the services June 9. He has been asked by the Birmingham Ministerial association and approved by the board of education.

MORE SCHOOL NEWS ON PAGE EIGHT



Make no Mistake—there is only one RED CROWN ETHYL!

It is the gasoline that "knocks out that knock"—makes your car eager to get away—hungry for hills—and powerful in hard going.

There are a number of ethyl gasolines on the market but there is only one Red Crown Ethyl. It is made by combining proved, dependable Red Crown gasoline and Ethyl Brand Anti-knock Compound.

Red Crown Ethyl is sweet, clean and fast. All gums, sulphur compounds and other matter which might cause you endless trouble have been eliminated.

To rid gasoline of these harmful agents is expensive but it must be done. Their presence means corroded wrist pins and driving rods, etched cylinders and faulty pistons which call for expensive repairs.

You can buy cheap gasoline but can you afford to use it?

You'll never know what your car can do until you use Red Crown Ethyl. You can get it anywhere. It is sold at as low a price as you can afford to pay for an Ethyl gasoline.

At any Standard Oil Service Station and at most garages

Standard Oil Company

(Indiana)
BIRMINGHAM, MICHIGAN
For quick service use air mail



Tune in next Sunday from 6 to 7 P. M. (Chicago Daylight-Saving Time) for Chicago Symphony Orchestra, also on Thursday evenings, 9:30 to 10:00; (Chicago Daylight-Saving Time) for the Local Entertainers, over WGN, Chicago; WTMJ, Milwaukee; WOC, Davenport; WBO, Des Moines; WDF, Omaha; WDAF, Kansas City; KSD, St. Louis; KSTP, St. Paul; WEGB, Duluth-Superior.

Special Offer!
During May, any Standard Oil Service Station in this city will drain your motor and flush it clean with Polarine Flushing Oil. Free of charge, with each refill of Polarine or Iso-Via Motor Oil.

Check Value for Value Price for Price!

The COACH \$595

The Roadster... \$525
The Sedan... \$525
The Coupe... \$595
The Sedan... \$675
The Sportlet... \$695
The Coach... \$725
The Sedan... \$595
The Light Delivery... \$400
The Light... \$545
The Coach with Cab... \$650
All prices Cash, Delivery, Finance, Michigan.

COMPARE the Chevrolet as well as the other automobiles available. Compare values and prices include delivery and financing.

Gehring Chevrolet Sales
"Outstanding"
OPEN NIGHTS AND SUNDAYS
WOODWARD AT RUFFNER BIRMINGHAM, MICH.
A Six in the Price Range of the Four!
PHONE 851