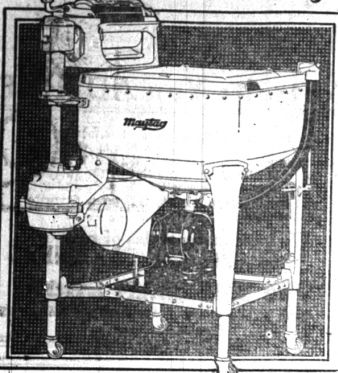


# Wringing is necessary in clean washing



THE Maytag Roller Water Remover flushes out the water and with it all remaining dirt and soap. It has a flexible top roll and a hard bottom roll. All parts of the garment are wrung evenly dry, buttons are spared and no hard-to-iron wrinkles are pressed into the clothes. Either electric or gasoline motor.

Delivered Payments You'll Never Miss  
THE MAYTAG COMPANY, *Trustees*, Toledo  
Founded 1893

## Maytag

Aluminum Washer

HAWTHORNE ELECTRIC CO.  
Birmingham

Davisburg—Clyde A. Nelsey  
Milford—Reid, Hardware Co.  
Rochester—George Durr  
Hardware  
Pontiac—Maytag Pontiac Co.  
Royal Oak—T. L. Luscombe  
Walled Lake—Frank S. Nook

# THEATERS

## FRONT PAGE PRESENTATION OF REPORTERS TAKEN FROM LIFE

The uneven hours, the late nights, the brass nerve and the prying and pecking and clamoring of the newspaper man has long engaged the attention of our dramatists, yet until Jed Harris laid the fuse which caused "The Front Page" to flare brightly and bright on the stage of the Times Square Theatre no play based on the life and department of the avid reporters and the flinty editors had ever rewarded its producer with aught but lengthy audits disastrously totted up with sinister flourishes in red ink.

In other years there have been exhibited in these parts "The Fourth Estate," "The Work of so competent an editor as Joseph Medill Patterson; "The Cub" by Thompson Buchanan; "What the Public Wants" from the lustrous pen of Arnold Bennett; "The Stolen Story" by Jesse Lynch Williams; "The Earth" by J. Bernard Kaghan; "The Undertow" by that calm Eugene Walter who wrote "The Easiest Way," "Ink" by one McNally from the fastness of Minnesota; and "Wives on" which had a frightened week or two at Daly's uptown, and which here the impressive imprint of Charles Brammfield Hoyt. All of these—and others too remote to be recalled by a careless chronicler—perished without public mourning, and so the theory arose that it did not lie within the province of a playwright to pen a substantial and successful tale of those who joust with presses, celebrities, scandals, crooked officials and the high priests of commerce, crime and conviviality.

The startling Mr. Jed Harris laid this monstrous suspicion low, and in the process his authority, the Messrs. Hecht and MacArthur, have taken their reporters out of first hand observation instead of peeping their idyl with sick and saccharine young Danas, fast on the trigger with their notebooks, wearing halos of the early Richard Harding Davis model, and dominating the scene whether it be a tussle between warring tribes in the Balkans, a showdown between the higher-ups and the lower-downs, or a critical struggle between righteousness and rampant vice on an election eve. These earlier reporters grouped under their well groomed faces the more masterful qualities of Riehellie, the elder Bennett, Horace Kresley, John Barrymore, Robert Fitzsimmons and Arsene Lupin.

The reporters of Hecht and MacArthur are arousing, grumpy gentlemen, seamy and disconsolate, heckled with debt and their city editors, suspicious of the mo-

### In Detroit Theaters

CASS  
"Blossom Time," that operetta based on the life and music of Franz Schubert, will be at the Cass Theatre for another week, commencing on Sunday night. This celebrated musical play goes on with undiminished patronage and popularity.

The Schubert firm have given it an all-new production this year and it is said that its present tour thus far has proved more successful on the road and in Chicago. This seems to justify its managers in calling it "the immortal operetta."

Genevieve Naegle, John Charles Gilbert, Robert Lee Allen and Herbert Lyle are at the head of a splendid aggregation of players and singers in this year's company. The first three have been here before in other "Blossom Time" companies and Lyle will be remembered from the recent visit of "My Maryland" last year and prior to that in "The Music Box Revue" and "Vivace Raviva" on Broadway seven years ago. The latter had to be brought over from Europe for this years presentation.

CIVIC  
George M. Cohan's great laugh success, "Whispering Friends," continues for another week at the Detroit Civic Theatre, in its first Detroit engagement. The principal roles in this comedy are taken by Miriam Sears, alternating with Madame Clara Clemens, and George Blackwood, Helen Morrow and Albert Lewis. Eight months at the Hudson Theatre in New York gave this play a good sound-off, and it has won applause throughout the country.

A young insurance broker marries a rich young widow. His friends suspect he is after her money, and test his affections with a practical joke. The result is a mix-up for all concerned. Speed and merriment are important ingredients in this farce.

An unusual attraction will be the first presentation on any stage of R. Dana Skinner's new play, "Dr. Sudreda," in two more weeks.

### Novelty To Serve To Guests

#### Sweet Potatoes With Pineapple

(Mrs. Mary Morton's Weekly Tested Recipe)  
Six medium-sized sweet potatoes, four tablespoons butter, salt, pepper, one cup crushed pineapple. Bake the potatoes until tender. Cut slice from one side. Remove potato pulp and mash with butter and pineapple. Add milk if there is not enough pineapple juice to make this fluffy. Fill into the potato shells and bake in a hot oven (500 degrees Fahrenheit) ten minutes more. A marshmallow may be put on top of each potato if you like.

mat Wednesday performances; one matinee and one evening, Jan. 30. Craig Ward, Vera Allen and George Blackwood have the leading roles. This is a story of Eastern occultism.

ORCHESTRA HALL  
The management of Orchestra Hall is announcing the engagement of the Prague Teachers' Chorus for Saturday evening, Jan. 26, on its first tour of this country.

From the fact that none of these singers receive pay for his services can be easily measured their devotion to music. One of their unique offerings is a composition entitled "Zibrov" by Nysdek. It is a complete vocal symphony which takes about 45 minutes to perform, and the chorus sing entirely from memory, without the score.

This Czechoslovakian Male Chorus from Prague will have something to give Detroit music lovers that they have never heard before. They come from a land heavy with legend, mellow with memories and melodious with wandering minstrel. The American tour of this Teachers' Chorus will mark the 1929 musical season as an epoch-making year.

An automobile engine that is practically noiseless has been developed by engineers of the Massachusetts Institute of Technology.

Asked if he wanted a lawyer, James Crew of Chicago, accused of burglary, thanked the court and said he preferred to have a couple of good witnesses.

The Lord Mayor of Manchester, Eng., received a letter from a Scotswoman who would gladly marry a nice widow with a nice home and about \$1,000."

### —and for the matter of laundry

It is important that fine curtains, downy quilts, fluffy blankets and cherished linens, lovely laces and lingerie, be laundered carefully. We use special methods and Ivory Soap. Our hand work department is qualified to render superior service. A trial will convince you.

**A Driver in Your Territory Every Day**

BIRMINGHAM ADDRESS: Field Bldg., W. Maple Ave.  
Telephone 1750  
DETROIT—EDGEWOOD 2028

**In Our Rough Dry Department.**

All wearing apparel is washed and dried. Handkerchiefs and hat work are ironed all for 10c lb.

**Modern Laundry Co.**  
All That The Name Implies  
3075 Jefferson Ave. East

# GENUINE SAVINGS

**Chipso**  
Large Size  
20¢  
pkg

**A&P**  
ESTABLISHED 1859  
WHERE ECONOMY RULES

**Matches**  
Full Count  
3 boxes 10¢

**Our Policy!**

Our policy for 69 years has been that the customer must be satisfied. Our business was founded on this principle and we attribute a great measure of our success to the close adherence to this policy.

We stand back of our merchandise and if not satisfactory we will gladly make the proper adjustments or refund your money.

**Waldorf Tissue Paper**  
roll 5¢

**Fels Naptha Soap**  
10 bars  
49¢

**Gold Medal or Pillsbury Flour**  
24 1/2-lb \$1.03 bag

**Bacon** Fancy Bulk lb 35¢

Aunt Jemima Buckwheat Flour pkg 13c  
Mueller's Macaroni or Spaghetti pkg 12c  
Royal Baking Powder 6-oz can 25c 12-oz can 45c  
Sugar Pure Cane 26-lb pocket \$1.53  
Karo Syrup Blue Label 1 1/2 size 1.00 can 5c  
Babbitt's Cleanser pkg 29c  
Gold Medal Cake Flour lb 17c can 10c  
Nutley Oleo Real Value  
Blue Peter Sardines can 10c  
Grandmother's Bread 24-oz loaf 8c 16-oz loaf 5c  
Peanut Butter Sultana Brand lb pail 19c 16-oz jar 23c  
Pure Fruit Preserves

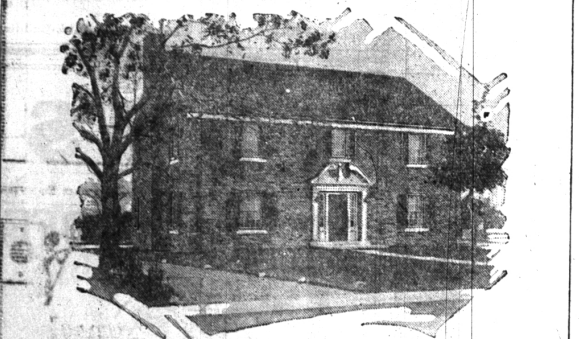
**Palmolive Soap**  
3 cakes  
20¢

**Snider's Catsup**  
Large Size  
bot 19¢

**Del Monte Peaches**  
2 1/2 size  
23¢

**Choice Quality Meats!**

Pork Loin Roast, Young Pig Pork, lb.....19c  
Chickens, Fresh Dressed—large and fancy for stewing, lb.....40c  
Beef Shoulder Roast, Choice Beef, lb.....28c  
Fresh Picnics, Small and Lean, lb.....14c  
Smoked Skinned Hams, all popular brands, lb 29c  
Smoked Picnics, Fancy Sugar Cured, lb.....19c



## Another New Home in Bloomfield Village

In this new home of J. H. Moore, the quiet simplicity of the Early-American period is reflected in the picturesque Colonial doorway, the wide shalimar window, the interior of old brick. The builder of this residence was John B. Ewert.

Bloomfield Village has been planned with care for families of refinement. Throughout this entire residential community of 1100 acres, protective restrictions control for all time the character of the neighborhood.

Homes to be built, while not necessarily expensive, must be artistic in architecture; their owners must be people who will perpetuate the unmistakable atmosphere of exclusiveness.

Bloomfield Village homesites of 75-foot frontage and upward are priced as low as \$2750—a price that includes every city improvement.

**Judson Bradway Co.**  
Realtors  
Bloomfield Village branch office, Maple Avenue at Cranbrook Road, open Saturday afternoons and after 2:00 p. m. on Sundays.

WHERE EXCLUSIVENESS ENDURES

SAVE WITH SAFETY  
**The Rexall Store**

**It Can't Leak!**  
because it is all one piece of live Para rubber. No seams, splices or patches.

**Two-Quart Size \$2.50**

Every KANTLEEK HOT WATER BOTTLE is guaranteed for two years. Should the bag you buy wear out before that time, return it to The Rexall Store and get a new bag, free.

For many Kantleek aids to health and comfort inquire at **SHAIN'S**  
The Rexall Store  
West Maple Avenue  
Birmingham, Mich.

**THE GREAT ATLANTIC & PACIFIC TEA CO.**  
ESTABLISHED 1859