

Phone Johnny on the Spot for Building Materials B'ham 112-111-W



Can't get Johnny on the spot... Hurry is what won him fame.

Lawson-Erb Lumber Co. Phone 112-111-W 500 Forest

Try An Eccentric Classified Ad.

News Of Baldwin H. S. And Other Schools

BALDWIN DEBATERS PRACTICE FOR TILT WITH WYANDOTTE

Attention of the debating team at Baldwin High School today is centered on the argument with the Wyandotte forensic trip, Jan. 25, at the high school.

Victory in this debate, the last of the preliminary series would place Birmingham in the elimination contests.

The Baldwinites surpassed Ypsilanti, Friday by a two to one decision. In previous contests the villagers won unanimously from Fordson and Mt. Clemens.

The Ypsilanti encounter is reported as the hardest verbal clash of the season.

Bronze shields are offered each year by the Detroit Free Press to high schools having the best stand-

COSTUMES, SETS TO BE DESIGNED BY ART CLASS

Costumes and stage settings for the coming operas and dramas at Baldwin High School will be designed by the craft class instructed by Mrs. Helen Kidder, it is expected today.

This is seen as a solution to the problem of art work in connection with stage presentations at the high school.

A model stage has been made and character to represent various types of costumes are being completed for the miniature con-

WE HEARD IT SAID BY—

Mrs. H. H. Wellman, of B'ham, says—'A section of Orchestra Hall is being reserved for Birmingham and Hills persons interested in the debate of M. Pierré's Lanux and Herf Wolf von Dewall, Jan. 23.

B grade and is limited to that grade alone. Esther Roache is president; Ruth Pratt, business manager; and Miss Barb, advisor.

The play was the club's first attempt in dramatics and others are contemplated. The cast includes Esther Roache, Dumont Mills, Theodore Ester, Marjorie Canner, Esther Hoover, Ruth Pratt, Margaret Kamin, Josephine Baker and Genevieve Uper.

LATIN CLASSES PRESENT PLAY

A Roman exhibit under the direction of Miss Ruth Hull was presented last week in the auditorium at Baldwin High School by the high school Latin classes.

Projects produced during the year were put on display and students were draped in the garbs of old Rome to make the event more realistic.

The program including a play followed the exhibit and was announced by Jack Savage. The play was called 'A Roman Night' written by William Sabom, Carl Hilly, Jack Ogden and Charles Schmitt.

Briefly Told

Mrs. Aris Horwath, English instructor, has again resumed her classes after an illness of a week.

The constitution of the Baldwin Junior High School student council has been accepted and is in force today.

The advanced vocal classes of Baldwin High School will give a recital in the auditorium, next Wednesday at 8 p. m.

Approximately 50 members of the high school music classes will be guests of Mr. and Mrs. Hugh Dillman, tomorrow, to hear the Fiske-Judite singers.

The final assembly program of the semester will be held tomorrow in the Baldwin High school auditorium for the entire senior high school.

A lecture entitled, 'Rocky Mountain National Park,' was given at Cranbrook School last night by Guy C. Caldwell, of the York Museum of Natural History.

Students of the Cranbrook English classes are to see the presentation of Shakespeare's 'Othello,' which they are studying, and which is now playing in Detroit.

The first of the annual series of inter-club and intra-mural basketball games at Cranbrook School was played this week.

The Adams Junior High School band under the direction of A. W. Berndt made its debut during the Adams-Ferdale game last week.

The girls from Adams Junior High School showed their skill at basketball when their four teams clasped Tuesday night.

In the second game Dorothy Schwartz took all the honors, 8 points. Rosemary Neal averaging 4 for the same team, the Cubs.

Never Too Late Superintendent—What the X on a life insurance application? Agent—It was made by a Scotsman; he was too weak to sign his name.—Judge.

VILLAGE MAN IS PROMOTED

Harris, Veteran With Power Company, To Occupy New Office in Royal Oak

Clarence W. Harris, 508 Forest avenue, one of the oldest employees of the Consumers Power company, has been promoted to the record department of the company's new office opening at Royal Oak Friday.

Mr. Harris's service with the Consumers Power company dates back to the days of the installation of gas service in Birmingham and Royal Oak.

'I remember when we completed the transmission line to Birmingham and Royal Oak,' he said yesterday. 'Both were comparatively small villages, there were no pavements, and sidewalks did not exist.'

Mr. Harris personally helped to install the first main, set the first meter, and pipe the consumers' range. Speaking of former working methods he stated:

'My men first used a wheelbarrow to transfer their tools and fittings from place to place. The wheelbarrow gave way to a single horse drawn wagon. That improvement was a big help to us because it saved us carrying pipe on our backs.'

Mercury, Himself He was up before magistrade for causing a breach of the peace.

'Did you strike the plaintiff in an excess of irascibility?' asked the man on the bench.

'I am afraid I did,' admitted the culprit, cheerfully.

'You are sure? Did he run away or stagger away? Please be careful.'

'He ran right enough, sir.' 'Well, did he run fast?' 'Did he run fast? If that man had had just one feather in his hand, he'd a flew, sir.'

Phone your news items to The Eccentric, Phones 11 and 12.

Miles of Smiles with MAHAFFY SERVICE



Driver: "Didn't I signal you to stop?"

Passenger: "Well, I've stopped, haven't I?"

Mahaffy says: "Even forgetful drivers had better remember not to run out of gas, and that they need oil OFTEN ENOUGH. Think about it every time you see this service station."

MAHAFFY SERVICE FRANK & WOODWARD

Alumiting Greasing DIXIE OPALINE - The Extra Service Motor Oil Pennzoil Veedol Ford Mobiloil Quaker State Motor Oils

Tell Your Merchant You Saw His Advertisement in THE BIRMINGHAM ECCENTRIC



The Outstanding Chevrolet of Chevrolet History - a Six in the price range of the four!

represents 4 years of Development and over a Million miles of Testing

Never has a new motor car come to the public more thoroughly proved in every detail than The Outstanding Chevrolet of Chevrolet History. Years ago, the Chevrolet Motor Company designed and built its first experimental six-cylinder motor. This far-sighted step was taken because Chevrolet engineers knew that the six-cylinder motor is inherently the most perfectly balanced motor—the ideal power plant to meet the growing public demand for greater reserve power, faster getaway and, above all—smooth, quiet performance. During the last four years, over a hundred six-cylinder motors—representing every conceivable type—were built by Chevrolet engineers and tested on the General Motors Proving Ground. This constituted one of the greatest series of tests ever conducted with any automobile. From time to time, the experimental models were torn down for inspection, redesigning and further testing—until the present motor was developed and pronounced correct. While the new six-cylinder motor was in process of development, other Chevrolet engineers were perfecting other parts of the chassis. And another great automotive organization—the Fisher Body Corporation—was devoting its gigantic resources to the creation of the finest, sturdiest and most beautiful bodies ever offered on a low-priced automobile. As a result, the Outstanding Chevrolet offers an order of well-balanced excellence that is extraordinary in the low-price field. From every standpoint—power, speed, smoothness, acceleration and quietness—its performance is truly amazing. Its handling ease and roadability are exceptional. Its economy of operation is so great that it delivers better than 20 miles to the gallon of gasoline. And its outstanding beauty, smartness and luxury are exciting widespread admiration. You owe it to yourself to see and inspect this remarkable car. Come in today!

Table with car models and prices: The Coach \$595, Roadster \$525, Phaeton \$525, Coupe \$595, Sedan \$675, The Sport \$695, Cabriolet \$725, Sedan Delivery \$595, Light Delivery \$400, 1 1/2 Ton Chassis \$545, 1 1/2 Ton Chassis With Cab \$650. All prices f.o.b. Flint, Mich.

Come in and See these Sensational New Cars—Now on Display GEHRING CHEVROLET SALES "Outstanding"

OPEN NIGHTS AND SUNDAYS WOODWARD AT RUFFERN. BIRMINGHAM, MICH. PHONE 851

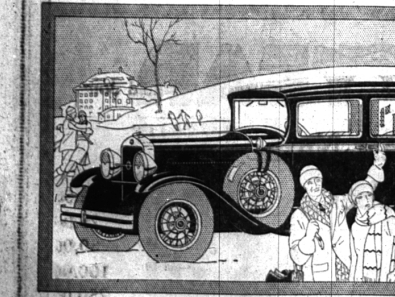
QUALITY AT LOW COST

Advertisement for L. R. Mix Jeweler, featuring Sheaffer's pens, pencils, desk fountain-pen sets and Skrip. Includes an image of a fountain pen.

Tell Your Merchant You Saw His Advertisement in THE ECCENTRIC

Studebaker's COMMANDER finer, more beautiful than ever... at a still lower price!

\$1350 at the factory



NEW COMMANDER BROUGHAM FOR FIVE—six wire wheels and trunk, standard equipment, \$1545. Bumpers and spare tires extra. COMMANDER SEDAN, \$1375. Price at the factory.

SCORE of betterments enhance the speed and spirit and stamina that made this great car champion six of the world. The new Commander is steeper at high speed, due to its new double-drop frame and lower center of gravity. Light bearing spring shackles and hydraulic shock absorbers provide matchless riding ease. The colorful coachwork of the new Commander interprets the capabilities of the car itself. There is speed and tireless energy, eagerness and pride, in every line of the long, low bodies. Windshield is non-shatterable safety glass. Steering wheel is steel-cored, unbreakable. Brakes are velvet-smooth, yet insistent, quick and powerful. Now, more than ever before, one must turn to Studebaker, if he would not pay more than he should for less than Studebaker provides.

39 Studebaker-Erskine Models \$360 to \$275 Price at the factory

Jewell & Mosher Inc., 132 W. MAPLE AVENUE BIRMINGHAM PHONE 1450