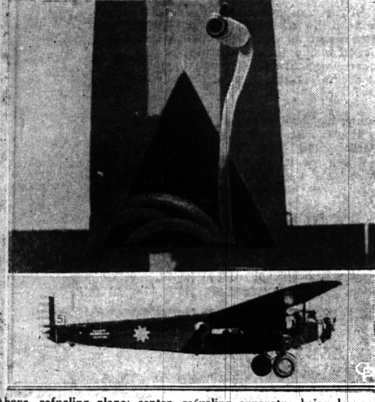
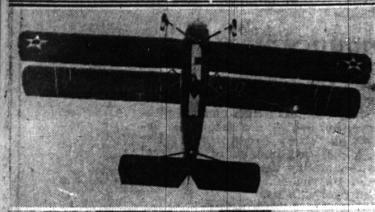


# Interesting Current Event Features Illustrated

## No Time For Smiles While Refueling Plane On Endurance Flight



Above, refueling plane; center, refueling apparatus being lowered, and, below, the Question Mark.

By MAJ. H. A. ERICKSON  
Written Exclusively for Central Press and The Eccentric

LOS ANGELES, Cal., Jan. 9.—Refueling in midair may offer thrills to those on the ground, but to flyers in either of the two airplanes involved it becomes serious business.

During seven refueling contacts prior to the official takeoff of the army's big tri-engine Question Mark, I witnessed the flyers go about the job of taking gasoline aboard at the rate of 30 gallons a minute. Not one offered a smile! The flyers hoped to remain aloft at least until January 9. This would make it the longest duration flight ever accomplished by an airplane—at least 216 hours.

The ship established a record by remaining aloft 160 hours 40 minutes and 15 seconds, taking off from here New Year's morning and landing the following Monday afternoon.

**Pump Gas To Wings**

Major Carl Spatz, flight commander, and World war hero, assumes personal charge of the refueling in the Question Mark. Major Spatz and Sergeant Hoop place the large funnel in position when preparing to take fuel and adjust the two four-inch pipes which carry gasoline from the funnel to the fuselage tanks. From those tanks Sergeant Hoop pumps the gas to wing tanks.

Major Spatz climbs up on a stool below the opening through which his head and shoulders protrude. Meanwhile Captain Ira C. Eaker, chief pilot aboard the

Question Mark, jockeys the big plane into position beneath the fuel-carrying plane. Captain Eaker sits there unconcerned and much like a person sitting in a rocker at home, his eyes fixed on the ceiling.

Fliers in the upper plane disregard the Question Mark entirely. They fly an exact line—straight and level—leaving the lower plane to find its place.

Once the proper places are assumed, Major Spatz signals for gas. Lieutenant E. R. Questada has the responsibility for passing this signal up—and immediately the gas rushes down into the tanks. Usually the contact continues six minutes.

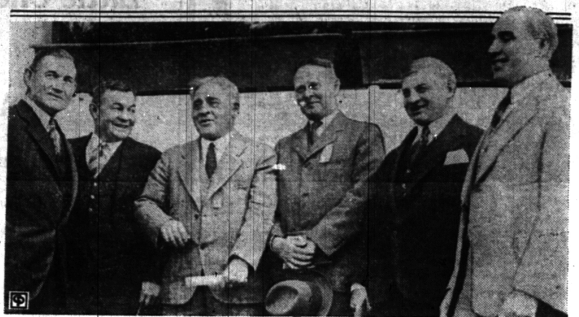
**Day or Night Refueling**

Gasoline is transferred between planes both during day and night. The air is smoother at night. This helps "snake up" for the darkness. All the flyers are conscious of the dangers involved, but are willing to make as many contacts as possible. At one time during my day-long flight Major Spatz crawled forward over the gas tank to speak to Captain Eaker. In reply to my question, without a smile he replied that all contacts were going forward according to schedule.

During one refueling operation when I attempted to joke with one of the junior officers I failed to arouse even a smile. All were working under great tension—but working with precision.

This is one of the most ambitious experiments of the army. It should help materially to further the cause of aviation.

## STAGG MEETS PROTEGES AT CONFAB OF GRID MENTORS



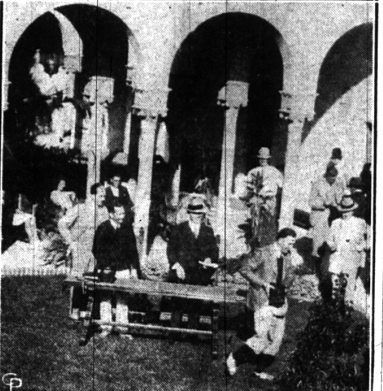
Amos Alonzo Stagg, veteran grid-coach of the University of Chicago, snapped with five of his proteges at New Orleans during the sessions of the National Association of Football Coaches. Photo shows, left to right, Fred Walker, University of Texas; H. O. (Pat) Page, University of Indiana; Coach Stagg; Dr. Roycroft, Princeton; Hugo Bedek, Penn State, and J. R. McCarthy, of New Orleans.

## Plays Crook Next



Siren, kitchen slavery, comedienne, heroine, leading woman and many other roles have been played by Carmel Myers, above, in her cinema career and now she has the role of a crook (or crookess) in her next.

## AS SMITH WON THE CATALINA OPEN



Many of America's leading golfers competed in the Catalina Island (Cal.), \$2,500 open which was won by Horton Smith, of Joplin, finish of the tournament. Photo shows Smith receiving his prizes in the patio of the Catalina Island clubhouse.

## REMINDING LONDON OF WAR RAIDS



Reminding London of wartime aerial raids, a series of explosions caused by escaping gas has wrought considerable damage in the British capital. Here is a view of some of the damage, showing a delivery truck overturned by the force of the explosion.

## COUPLE LOST IN GRAND CANYON



No word having been received from them for more than a month, Mr. and Mrs. Glenn Hyde, who set out on a voyage down the treacherous Colorado river in a scow, are believed lost in the Grand Canyon, where they may have perished. Their boat has been located by an army airplane, but no trace has been found of the missing couple other than a man's footprint. Photo shows Mrs. Hyde, left, and Hyde.

## Forlorn Figures



Football coach who has never been asked for his choice of an all-American team.

## Joins Sally's Pilots



Dick Hoblitzel, old-time Red Sox first baseman, and well known as a major league player, has agreed to manage the Charlotte club of the South Atlantic league the coming season—affectationally known as the Sally league.

## Mexico's Aspirants



Among the many candidates for the presidency in Mexico, in 1929, are Gilberto Valenzuela, former ambassador to England, above, and Pascual Ortis Rubio, former ambassador to Germany and Brazil.

**A Driver in Your Territory Everyday**

You can entrust to his care the things you want laundered painstakingly and returned promptly.

Special methods for cherished linens, rare laces and dainty lingerie. You will appreciate the way we launder kiddies' clothes and men folk's shirts and collars.

**Modern Laundry Co.**  
All That The Name Implies  
7105 Jefferson Ave. East

**In Our Rough-Dry Department**

All wearing apparel is washed and dried. Handkerchiefs and fat work are ironed all for 10c lb.

**BIRMINGHAM ADDRESS:**  
Field Bldg., W. Maple Ave.  
Telephone 1750

**DETROIT—EDGEWOOD 2928**

F. W. BARD, JR.  
Secy. and Treas.

Buy Direct From the

# Wolverine Warehouse Store

**BIG SAVINGS 25 TO 35%**  
**LAMPS—FURNITURE—RUGS**  
**One of the Largest Stocks in Michigan**

Buildings occupy 200,000 ft. of floor space—one headquarters—one handling—no down town store—owned and operated by Wolverine Mfg. Co., Franklin Road and G. T. R., Pontiac, Mich. Side tracks into our warehouse.

**Ample Parking Space**  
Open Till 9 P. M. Every Week Day Night  
**PONTIAC**

**CHRISTMAS SAVINGS CLUB**

*"I joined the Club today"*

**THEY'RE happy now, for Christmas next year will have no worries to mar the joy of giving. A check, in time for early shopping will add real cheer to that day of rejoicing.**

**We have a club plan that will fit your pocketbook, too.**

**What the different classes amount to**

25c Class, deposit	25c each week, in 50 weeks \$	12.50
50c " " "	50c " " " "	25.00
\$ 1.00 " " "	1.00 " " " "	50.00
2.00 " " "	2.00 " " " "	100.00
5.00 " " "	5.00 " " " "	250.00
10.00 " " "	10.00 " " " "	500.00
20.00 " " "	20.00 " " " "	1000.00

**We Pay Four Per Cent On Christmas Club Savings**

# The FIRST STATE SAVINGS BANK

BIRMINGHAM - MICHIGAN