

# Interesting Current Event Features Illustrated

## Lindbergh's First Tumble--Into Sea of Matrimony



Miss Anne Morrow



Colonel Lindbergh met Anne Morrow in December, 1927, on his "goodwill" flight to Mexico and Central America.

She made her first flight as his passenger.



They were frequently seen together on sightseeing trips in the Mexican capital during both of his trips to the city.



When he took off from Valbuena Field last December, Miss Morrow was at the field to see him off. After he took off he dipped low over the Morrow car.



Anne Morrow was first honors in creative writing of both prose and poetry at Smith college, where she graduated last June.



Col. Charles Lindbergh.

## Cheers Up Riegels



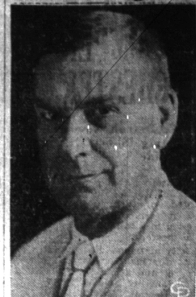
## Signs With Boston



Tony Plansky

Tony Plansky, former Georgetown all-around athlete, has signed a contract with the Boston Braves and will travel with the team to the training camp at St. Petersburg, Fla., to show his wares. He can pitch and play the outfield.

## Raises Bootleg Ante



Sponsored by Senator Wesley Jones, of Washington, the Jones bill, providing for more severe penalties for violation of the prohibition law, has been passed by the senate and now goes to the house. If the bill becomes law maximum penalty for the manufacture or sale of liquor will be increased to five years imprisonment, a fine of \$10,000, or both.

## HUGHES CONFERS WITH LAWYERS IN WATER CASE



After a preliminary conference with attorneys for both sides of the water diversion suit in Chicago, Special Master in Chancery Charles Evans Hughes, of the U. S. supreme court, has decided to hold hearings the latter part of March. The supreme court has ordered Chicago to dispose of its sewage in disposal plants rather than by diverting water from the lakes, and it is one of the problems of this conference to decide how much time will be allowed the sanitary districts to erect disposal plants. Above, Hughes, center, surrounded by the attorneys, at Chicago.

## NEW RACE PRODIGY IS CHRISTENED



"Broadway Limited" is expected to be one of the fastest horses from the "Three D" stock farm at Fort Worth, Tex. The horse recently was christened. Above, left, John Yorum, of the Pennsylvania railroad, after whose fast train the horse was named, and Goy Waggoner, snapped with the horse just after the christening.

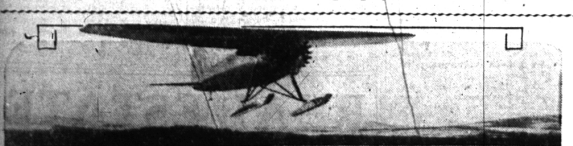
## AS ITALY, VATICAN SETTLED 60-YEAR DISPUTE



Central Press telephoto of the first picture to arrive in the United States of the signing of the treaty between the Italian government and the Vatican, creating a papal state, and settling a dispute which began in 1870, and because of which the popes have remained voluntary prisoners in the Vatican. In the center of the photo Premier Benito Mussolini and Cardinal Gasparri, the papal secretary of state, are shown. The group was snapped leaving the lateran palace at the completion of the ceremony.

## From the Ends of the Earth

Wilkins, Homeward Bound, Alters World's Conception Of Antarctic Geography



Top, monoplane "Los Angeles"; below, left to right, Capt. Sir Hubert Wilkins, Carl Eielson, Joe Crossan and Orval Porter.

Exclusive Central Press Dispatch to The Eccentric

Los Angeles.—Capt. Sir George Hubert Wilkins soon will reach the United States from "the ends of the earth."

He and his brave crew—Eielson, Crossan and Porter—have accomplished what no one yet has succeeded in doing.

In a single nine-hour flight Captain Wilkins completely changed the world's conception of Antarctic geography. He also demonstrated conclusively that the air plane is a most important means of scientific research in the polar regions.

Distinct Feat

Captain Wilkins and Eielson are the only two men in history yet to have reached "the ends of the earth." Commander Byrd

## BOSSING BASEBALL AND INSURANCE



Bert Shotten, manager of the Philadelphia Nationals, who spends his winters directing one of the leading insurance agencies at Amherst, O., is winding up his business affairs for another year. He leaves for his team's training camp at Winter Haven, Fla., Feb. 27. Shotten is shown above at his desk in his insurance office.

will have been the third.

Captain Wilkins showed before he went south that the airplane is a revolutionizing factor in polar travel. Despite poor fields, exceedingly strong winds and adverse conditions generally, American airplanes to date have a perfect record in the Arctic and Antarctic.

If his north polar flight Captain Wilkins used a single monoplane, called the "Los Angeles." Less than a year later the "Los Angeles" and a second plane were taken south with the Antarctic expedition.

Previous to his northern flight, the "Los Angeles" had been flown about 7,200 miles in the United States. It was shipped to Alaska and pounded around the ice fields that had been leveled for its use.

Great Durability

The story of the airplane's durability under these conditions may be told briefly. Captain Wilkins flew this plane from Point Barrow almost to Spitzbergen, across the top of the world, and was forced down by a blizzard when nearly in sight of the radio towers of his destination. The storm lasted five days, and when

it was over, the snow was cleared away from the plane, the engine warmed up, and the trip completed—the plane having flown about 3,000 miles under the worst imaginary conditions. Later the same plane flew an additional 10,000 miles in the United States.

Two months ago, returning to its Antarctic ice fields from a short trip, the plane was taxed into some soft ice and buried its nose in the water. The propeller was bent out of shape, a wing was punctured, and the motor remained under water two hours before the plane was righted. Yet three days later it was flying as well as if it had just been wheeled out of the factory.

In January Captain Wilkins stored his two planes and accessories in some iron sheds on Deception island, and prepared to depart for the United States. The shortening season and unusual conditions hastened this schedule.

Before Wilkins left the Antarctic regions, he had made one important nine-hour flight, and covered 1,200 miles of territory. His most important discovery was the Graham Land, formerly thought to be a solid stretch of ground,

When others were laughing at Roy M. Riegels, captain-elect of the University of California football team, because he made a famous run in the wrong direction during the Georgia Tech game, on New Year's day, at Pasadena, Miss Nelly Irene Lake, youthful Bridgeport, O., high school graduate, wrote him a note cheering him. Back came a letter from Riegels, the other day, thanking her for her kind words. The two are above.

really consists of a number of large planks.

Extreme Hardships

Only those who live near the poles can appreciate the hardships that the men and equipment of these expeditions undergo.

Few level stretches of smooth ice can be found. If a flyer puts pontoons on a plane and takes off from the water, he cannot be sure that when he returns that the water will not be covered with jagged blocks of ice.

"Compasses go 'haywire'" because of navigating so close to the magnetic pole.

Despite these "inconveniences," to phrase it mildly, Wilkins has ventured as far as 600 miles off his base, and soon Commander Byrd will do likewise.

Few greater heroes than these can be found.

### The Installation of a new . . . Shoe Finisher

enables us to give you even better shoe rebuilding service than heretofore. This machine incorporates the most modern factory methods—it is quiet, efficient, fast—a "miniature shoe factory."

Your inspection is cordially invited.

Phone 117

for FREE call for and delivery service

## HARRY J. HILL

115 West Maple Avenue  
(Rear of Williams Boot Shop)

# You save money 4ways when we service your CHEVROLET

Genuine Chevrolet Parts

When we service your Chevrolet, we use genuine Chevrolet parts for all replacements. They not only wear longer and give better satisfaction, but they also cost less to install—for they fit the first time, without any expensive hand fitting.

Flat Rate Charges

All our service charges are based on a low flat-rate system, worked out by Chevrolet factory experts. All our work carries the minimum charge for first-class workmanship and genuine Chevrolet parts—and you know in advance just what the expense will be.

Specially Trained Mechanics

Our mechanics are specially trained in Chevrolet service work, and can perform every service operation intelligently. Furthermore all work is done to the regular factory tests for accuracy—eliminating the necessity for re-adjustment.

Specially Designed Equipment

Our shop equipment is specially designed for Chevrolet service work. Every machine is built to do one job perfectly—and in the most efficient manner. Thus you save money in four different ways when we service your Chevrolet!

## GEHRING CHEVROLET SALES

"Outstanding"

OPEN NIGHTS AND SUNDAYS

WOODWARD AT RUFFNER

PHONE 851

BIRMINGHAM, MICH.

### QUALITY AT LOW COST