

The Woman's Page

Society

SILHOUETTE IS NOT SO DIFFERENT

HOLIDAY HOSTESS

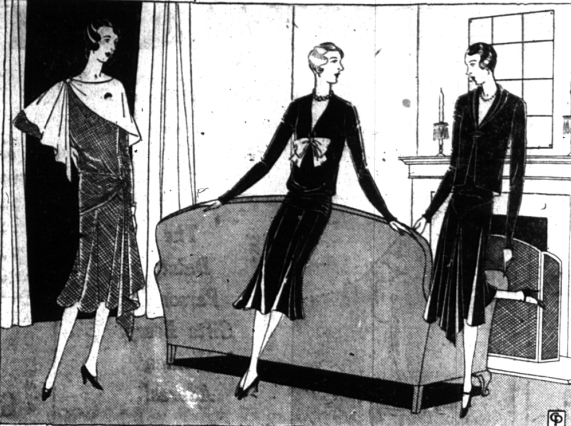
(Continued from Society Page, Part 1)
Miss Cera Mae Keller, of Beverly Hills, entertained Saturday evening at a formal dinner dance at the Western Golf and Country club near Bedford.

Mr. and Mrs. F. R. Mixer, of Poppleton street, entertained a group of friends at dinner and bridge last Thursday evening at their home. Places were marked for Mr. and Mrs. Dwight L. Cooke, Mr. and Mrs. Frederick Boynton and Mr. and Mrs. Jack Burns.

Mr. and Mrs. Lee A. White, of Brookside drive, entertained at a family dinner at their home Thanksgiving. Among their guests were Dr. and Mrs. Charles Baker, of Bay City, and Dr. and Mrs. Robert Baker, and family, of Pontiac.

Honoring her son, Edward Born Cochran, on his seventh birthday anniversary, Mrs. Maurice W. Cochran, of the Hills, entertained at a children's party Wednesday at her home.

Mr. and Mrs. Alfred R. Glancy, of Cranbrook road have as their house guest the latter's mother, Mrs. J. C. Courts, of Washington, D. C.



By LUCY CLAIRE Fashion Writer for Central Press While the new silhouette is here, and here to stay with us for some time, revolvers to the contrary, it is not being accepted in its most exaggerated form by American women, generally speaking.

Conservative Model An example of one of the more conservative afternoon frocks in brown satin with eggshell trim is shown at the left of the sketch. The draping at the side and the swished hip give the modish soft lines that are in no way extreme. The eggshell collar repeats the drape on the skirt. Copper bronze kid pumps and eggshell hose are worn with this frock.

The normal waistline does not mean something up under the arm pits, any more than the longer skirt does not mean five or six inches from the ground. The normal waistline is just above the hips, and waist lines are still being posed on the top of the hips while we are getting accustomed to the raise. Our sports clothes are still almost straight lines, with skirt lengths about four inches below the knee. Afternoon frocks develop uneven hemlines with long in back or front or sides, or in points or scalloped all around. Not such a terrific difference after all. Just a little greater length, a little more fullness and

By FRANCES CLYNE Fashion Writer for Central Press Choosing an evening gown, when one is to be a holiday hostess, requires thought and care. One must look exquisitely stunning. Yet the gown must have that quiet elegance that enables one to wear it with a certain casualness that a hostess needs to put her guests at ease.

White is an admirable choice. Against the festive background of the Yuletide light, evergreen and mistletoe, nothing is lovelier than white. White has an indescribable ability to make a woman look very, very feminine and fragile. It is romantic, moreover, suggestive itself of mistletoe. With the restraint of feminine modesty, nothing is smarter than dead white.

The hostess' Christmas party gown is best fashioned of one of the simple materials, depending on its beautifully modeled lines for its effect. Frocks that are a modified princess line. It should have a long length, but unevenly shorter at the straight, all-around hem-lines, unless the gown is a period gown or some specially designed one that calls for all-around floor length. The skirt that dips gracefully in points carries with it the illusion of lovely contours that is attractive.

Skirt Fullness Matter of Taste The manner in which the skirt's fullness is introduced is a matter of individual taste. Smart gowns are apt to bring the question of fullness in at low level. Knee flounces are quite the smartest feature of some of the new gowns. Some of these separate the flounces at the sides, introducing the trains from their trailing ends.

The decolletage is important on this hostess gown. Rather high front cut, with a more exaggerated line in the rear is chic. The square cut, both front and back, is very good, but it does not become many women, especially broad shouldered ones who should utilize V and U necks whenever possible. The individualized decolletage is at a premium on smart gowns for wear after the electric lights are lit.

For a gown of the type a holiday hostess might select, plain materials are better than glamorous laces, rich brocades and taffetas shot with silver and gold. Simple crepe de chine, satins, chiffon or satins, lend themselves admirably.

Very individual is a gracefully modeled gown of white that fits the hostess' requirements admirably. It fits the occasion perfectly, showing the natural waistline curve and giving the long-lined silhouette that everyone favors.



Choosing an evening gown, when one is to be a holiday hostess, requires thought and care. One must look stunning, yet the gown must have a quiet elegance. This Frances Clyde model in white fits the figure perfectly, showing the natural waistline curve, and giving the long-lined silhouette. The bodice is draped horizontally across the front. Two side trains are fashioned by splitting the flounce on the sides, and its ends swing down back to fashion the train.

Horizontal Drape This fashion has had bodice draped horizontally across the front in three places, just below the bust, just below the waistline and just below the knees. This horizontal manipulation is new and arresting. It gives a quaint touch reminiscent of the elegant, 80's, yet is distinctly a 1930 version. The rear of this gown is severely plain, but so perfectly does it fit that it achieves an air of beautiful simplicity.

Two side trains are fashioned by splitting the flounce on the side by splitting the flounce is draped up at the sides, and its ends swing back to fashion the train, instead of joining the front width.

With the gown one may wear white slippers and heighten the appeal of her costume. If she has decided to wear pearls and diamonds for decoration, if she chooses emeralds or rubies, she may match her jewels in her crepe de chine or satin slippers, and be content with results.

ted with boiled salad dressing.

Suggestions Dinners for One-Year-Old Ruth Washburn Jordan, food consultant to "Children, the Parents' Magazine," gives the following menus for young children:

One or two tablespoons baked potato mashed in a little cream, one-half to whole yolk of hard-boiled egg mashed and spread on crisp toast. Eggs should be boiled one-half hour in order to be digestible, one to two tablespoons chopped spinach, one to two slices stale bread, one cup warm milk, one to two tablespoons strained potato pulp with a little juice.

Two tablespoons orange juice with one-half to whole egg yolk (raw), one to two tablespoons baked potato mashed with a little butter, one tablespoon sifted cooked carrot, one tablespoon cooked spinach, one to two slices stale oatmeal bread, one cup warm milk, one to two tablespoons strained apple sauce.

Save Felt Hats "I always save discarded felt hats," says a resourceful housewife, "and always find use for them. I have cut them up and made the mats for under table lamps or small vases to keep from

marring the furniture. Have also pasted little strips of them to put in the children's shoes when they slip up and down, and have trimmed other felt hats with ornaments. I have cut from the discarded ones. One very attractive example was a cluster of different colored felts cut into little round circles, which, when sewed together, resembled a bunch of different colored grapes.

Barbara and Beverly Juice, 16-month-old twin sisters of Quincy, Mass., had an airplane ride after winning the prize as the healthiest twins in the state.

Dan Robertson Plumbing and Heating Furnace Work Sheet Metal Work Eave Troughing ESTIMATES FREE 1312 Webster Avenue Phone B'ham 1800

Your Hat tells the story of your appearance. Bring It Here for Dry Cleaning We clean and reblock felts with such skill that they have that "brand new" look when they are returned to you. Birmingham Shoe Shine Parlor GUS BAHMUS, Prop. MAPLE AVE. EAST "Just a few steps from Woodward"

MATTRESSES REMADE All kinds—Felt, Cotton, Kapoc, Hair, etc., remade and recovered JUST LIKE NEW! ALL WORK RETURNED THE SAME DAY By Request Feathers Renovated For your convenience, call Pontiac 27695 or Royal Oak 387, at our expense. OXFORD MATTRESS CO. 382 S. SAGINAW, PONTIAC, MICH. Pontiac 27695

TEMPLE OF MEMORIES America's Finest Memorial Mausoleum WHITE CHAPEL MEMORIAL PARK Detroit's and Michigan's Original Memorial Park ADJOINING BLOOMFIELD NON-SECTARIAN PERPETUAL CARE White Chapel Memorial Association Suite 621 Book Bldg., Detroit Cadillac 4763



"I'll Admit, Dear, That You Sure Know Your Cleaners"

"I've never been so satisfied with a suit as I am with this one. Why, Ridley's have cleaned this suit up so perfectly and have given it such a well-fitting and snappy press that I feel like wearing it a week straight. And there's absolutely no odor to it, either. From now on I want you to send all my clothes to Ridley's, like you do with your own."

RIDLEY CLEANERS INC. Miracle Clean clean as a breath of Spring WEST MARLE AVENUE PHONE 180

DRESSY NEW SUNDAY EVENING COSTUMES NOW STRESS INDIVIDUALITY OF WEARER

BY HARRIET

THE informal dressy things for winter are among the loveliest and most feminine. I include among these such things as the little velvet hats that one puts on for afternoon tea, dinner or any late afternoon evening frocks as the new Sunday evening costumes and those for "high teas," the name earned by anything that serves more than tea and wafers.

Of especial significance are the new Sunday evening dresses. For they usher in a new era in dress which heralds a new era in entertaining. They proclaim that it is popular now to stay home Sunday evening and let a few friends drop in to chat and enjoy a homey-informal time. In fact, they make of Sunday evening the same old-fashioned conversational time that old-time Sabbaths used to be. The dresses worn for Sunday evening are not elaborate, yet they are very much dressier than other late informal things. Prêt-à-porter, made rather simply, or else some high color such as bright blue or vivid red felt crepe are a good choice.

IF one is imaginative, she may take plain white green crepe or crepe Elizabeth and make glamorous sleeves and neckline and have a stunning frock. It should be quite long for this one of those times when long frocks are correct. The main thing about Sunday evening dresses is that they are rather informal in cut and yet are somewhere between elaborate evening things and regulation daytime frocks for street and office. They are perhaps the simplest of all the winter's clothes to make for oneself. For they should be individual and a little touches one can add to them make them all the more beautiful.



This "five to eight" Sunday evening gown is made of red chiffon velvet with a small floral design in white and black. The afternoon hat is of black velvet trimmed with two crystal wings. appearance. One look at herself and the flattering lines of the hat will make her face relax pleasantly. It is quite a tonic. An expensive and an advisable tonic. They come in all colors. Jean Patou makes some of the most flattering ones that Paris offers. One of his, in black velvet with irregular side dips, has two crystal wings flaring back from the face in graceful beauty. This type of decoration is quite in keeping with the rather romantic appeal of these hats.

HOUSEHOLD HINTS BY MRS. MARY MORTON

MENU HINT BREAKFAST

- Brown Bread Toast Marmalade Wheat Cereal with Top Milk Coffee-Orange Juice or Milk LUNCHEON Broiled Bacon-Egg and Tomato or Lacone Sandwiches Dill Pickles Canned Fruit Oat Meal Cookies Tea DINNER Roast Pork Pastry Brown Potatoes Gravy Creamed Rutabagas, Swiss Cabbage-Carrot Salad Baked Apple Wafers Coffee

Three people are served at each meal as planned in today's menu. For the dessert, fill the center of the apple, where the core has been, with chopped nuts and raisins.

Today's Recipes

Bacon and Egg Sandwiches—Cut two slices white bread and one of French toast. Place on a slice of white bread. Place brown one on top. On this lay slice of tomato. On fresh one use a whole canned one and place third slice over it with a leaf of lettuce. Serve with slices of dill pickle. This makes two large sandwiches.

Roast Pork and Pastry—Buy a loin roast untrimmed. Score fat on top, season and place in a pan no deeper than two inches with one onion. Place in hot oven; when beginning to brown lower temperature and roast until tender. Twenty minutes before serving place rice, biscuit, dough over top of roast, pees and par-boiled potatoes fifteen minutes and place them in fat around roast. Turn when brown. Remove and make gravy.

Cabbage Salad—Chop two cups cabbage and four stalks celery fine. Add two to three carrots, put through food grinder. Moist-

This Christmas GIVE THE MOST WORTHWHILE OF ALL Only a woman can know what it would mean to have her kitchen on Christmas morning this latest Westinghouse Electric Range. It is the most worthwhile gift of all. . . . It gives one who carries the burden of housekeeping and the responsibility for three meals a day. It brings her many gifts whose value cannot be measured in dollars and cents. The flavor of delicious old-time Dutch Oven cooking is a thing to be appreciated by every member of the family. A Westinghouse Range, with the famous "Flavor Zone" Oven, will give every dinner traditional goodness. Yet, the oven is automatic. . . . It gets meals all by itself. And so it gives a woman the leisure she needs to keep young and happy. It frees her from the burden of kitchen cares and makes her a friend and companion to her family. What a wonderful gift! And what a wonderful time to give it! At Christmas. WESTINGHOUSE ELECTRIC & MANUFACTURING CO. Offices in All Principal Cities Representative Everywhere See the Westinghouse "Flavor Zone" Ranges on display at DETROIT EDISON CO. Westinghouse "Flavor Zone" Ranges The Sign of a Westinghouse Dealer