

BY MAGICIAN TO GIVE SHOW

...mings, Student Of Her- man, To Entertain At Library

Jarence Cummings, Birmingham boy magician, will give a performance Friday at 7:30 p. m. in the auditorium of the Baldwin library. He will be assisted by Trowbridge Gail. Both are Baldwin High School students. The program includes several tricks of magic that have become famous and more mystifying as men as Thurston and Herring have perfected them. The performance will last about one hour. Among the tricks is the well known rice and orange delusion, created by Herman Cummings. Cummings has been doing slight hand work for several years. He lives at 3031 Ridgeland avenue. Gail lives at 823 Pierce street.

Frames

... that beautify your favorite photographs. ... that harmonize and lend charm.

Also a complete selection of swing frames

C. L. Misener
Basement of Field Bldg.
PHONE 346

Roofing And All Kinds of Sheet Metal Work

An Estimate Will Not Obligate You

Belisle & Bizoe

580 S. Woodward Avenue
Phone 2353

— helping you keep your car well-groomed —

Washing

Horsemen and motorists alike, enjoy having their 'steeds' well-groomed. Regular, thorough washing keeps up your motor car's appearance, and of course

Alemiting

maintains your car—keeps it running with that first year performance that every motorist enjoys. Besides, regular Alemiting will cut your repair bills in half.

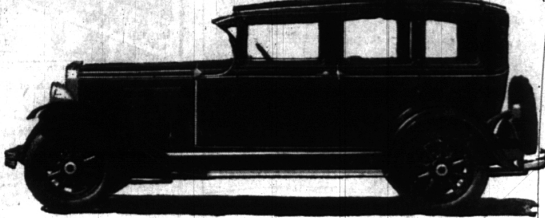
Broad Driveways - Thorough Work
Cars Called For and Delivered

TELEPHONE 772
For Battery Road Service

Berger & Townsend

TEXACO SERVICE STATION
SOUTH WOODWARD AVE. AT FRANK ST.

NEW GRAHAM-PAIGE APPEARS



Graham-Paige today introduces its 1930 models, presenting a line of three sixes and two eights replete with chassis and body improvements.

All models except the lowest priced six have the standard-shift four-speed transmission, which has been a feature of the line for two and a half years, the Graham-Paige company having led the whole industry in recognizing the advantages of the four-speed drive and in perfecting its mechanism.

The 1930 models, although representing substantially increased value, are offered without change of price, beginning with \$855 for the two-door sedan on the 612 chassis, which is now built three inches longer than formerly and has a larger engine.

ADJUSTABLE SEATS
One of the most striking features of the new Graham-Paige line is an exclusive innovation—the use of adjustable seats, rear as well as front, in all six-cylinder models and the 127-inch wheelbase eight. The rear seat cushions

offer a choice of two positions, changing the depth and the slope of the seat. Full width front seats as well as the two separate seats of the two-door model 612 may be shifted mechanically, while occupied, over a wide range of position.

Since the clutch and brake pedals of all Graham-Paige cars, and also except in the 612, the steering column, are fully adjustable, the new models offer the widest possible variation in driver and passenger position. In short, the Graham-Paige can be fitted to each individual as if built to his size and measurements.

Summarized, the outstanding features of the Graham-Paige line for 1930 are as follows:

A completely new model 612 chassis of 115-inch wheelbase and larger engine, giving increased power at lower engine speed (66 h. p. at 3,000 r. p. m.). Bodies of advanced structural design.

Superior riding comfort, at-

tained not only through the adjustability of both front and rear seats, but through the use of over-padded seat cushions, form-fitting seat and back contours, and extra seat and back springing.

Clear-vision instrument panels, without ornamentation but strikingly handsome in appearance.

New type glass visor in chromium brackets (except 612).

Three-spoke steering wheels (safety type), models 612 and 615.

Inspection of the new 612 chassis and of the other two sixes and the two eights shows the consistent use throughout the line of the latest refinements and improvements in design and equipment. For once, however, a new line of cars is presented in which the achievements of the body engineers are likely to arouse more interest among motorists in general than are the mechanical details, even with one new chassis model in the line-up.

'BIG CAR FEEL' HUPP CLAIM

One of the striking features acclaimed by all who have driven the new Hupmobile 1930 Six is its pronounced "big car feel."

There are several reasons for this sensation. The new car's easy handling does not come from a single unit. On the other hand every large unit and its component parts contribute to the smooth performance and road-ability of the new '30 model "S" six. From the engine is obtained the smoothness which is the first characteristic of big car performance. Four large main crankshaft bear-

ETHER BEAUTY WINS LAURELS



"Radio's most beautiful artist" is the title won by Miss Betty Cole, "blues" singer from Boston, at the recent national radio industries' convention. She formerly was a vaudeville entertainer.

—A Sympathetic SERVICE

that relieves you of all detail -- of all responsibility.

OSTEOPATH TO OPEN OFFICE IN VILLAGE

Announcement is made today of the opening of an office in the First National Bank building Sept. 4, by Dr. Paul J. Stryker for the general practice of osteopathy. Dr. Stryker took over the practice of Dr. Ralph E. Everal during August while Dr. Everal was on vacation. Dr. Stryker is a graduate of the Kirksville College of Osteopathy and Surgery and comes to Birmingham from Romee where he has formerly practiced.

A. C. ADAMS
108 North Bates
Ambulance Service
Phone 1138



You've Never Heard Radio Reception— You've Never Heard Records Played—

—with the power, and depth, and beauty, and realism afforded by this marvelous combination instrument—

Victor-Radio, Electrola

Records electrically reproduced and amplified the music and entertainment on the air brought into your home just as you would hear it in the broadcasting studio! There has never been anything like this instrument—there's nothing to equal it! Victor quality, Victor leadership through and through! See it, hear it, at once! Don't miss any longer the world of enjoyment it would bring into your home.

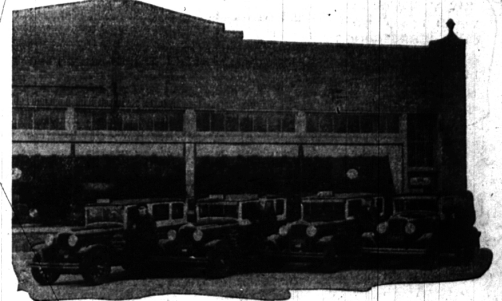
ONLY \$275 LESS TUBES
Victor-Radio, separately, \$155, less tubes.

"The Home of Famous Pianos"
Grinnell Bros.
Steamway Representatives
144 S. WOODWARD AVENUE BIRMINGHAM

BACK TO SCHOOL

Next week the young Birmingham students go back to school. Among the many arrangements there is that of transportation for those living beyond convenient walking distance.

Shaw Bros. offer, this year, an improved taxicab service. Your son or daughter, when driven to and from school, will enjoy the promptness and comfort afforded by this transportation. Four metered cabs, courteous and careful uniformed drivers, and insurance protection are your children's when this service is used.



We urge you to make advance arrangements. Avoid the usual flood of calls which always accompanies the first day of school . . . your phone call today assures satisfaction.

Ask About Our Special Ticket Prices For Term Contracts

Make Arrangements Now so that your children will

Call Birmingham 1844

BIRMINGHAM Battery Service 303 East Maple Phone 902

Genuine Willard Batteries and Willard Service For All Makes Ignition and Generator Service for All Cars

Shaw Bros. Taxicab Company

136 BROWNELL ST.

Shaw Bros. Taxicab Co.

TELEPHONE 1844