

Interesting World News of the Week In Pictures

PORTO RICO BEGINS TASK OF REBUILDING ITS CITIES



Although in dire need of outside help to make itself presentable again, San Juan has begun digging out from the wreckage and desolation left in the wake of the terrific hurricane which ravaged the island of Porto Rico. Above, the wreckage of a street in San Juan, where workers already have begun the task of cleaning away the debris.

SMALL BROTHER STARTS SOMETHING



Because her small brother, Billy Jenke, caught her kissing her sweetheart and threatened to tell, Mabel Jenke, 15, of Seattle, Wash., promptly eloped with Eugene Bell, also 15, fearing that their parents would not understand their love. Equipped with 90 cents and two Bibles they faced the world, but soon "went broke" and had to return. The three principals are above, Mabel and Eugene, top, and Billy, who taunted, below.

WALES VISITS FRENCH HOSPITAL



Just before he left France for his African good-will tour, the Prince of Wales paid a visit to the English hospital in Marseilles. Above, he is chatting with a group of officials.

Poor Financing may lead to disaster

When you buy or sell property "on terms" you know what all those terms mean to you in dates, dollars and cents. A Realtor will give you a clear explanation of obscure legal or technical phrases that might otherwise prove mighty expensive. Then—if a dispute arises you can have it settled "squarely" by the Board.

It pays to consult a REALTOR

Members of the Birmingham Real Estate Board: Robert R. Allen, Judson Bradshaw, O. F. Baier, Bingham & Bingham, E. J. Butler, Leland J. Buryan, Campbell and Bell, Calverley, Bush & Tillotson, James A. Eaton, Harrell & Harrell, Elmer W. Harsh, J. B. Howarth & Son, Malcolm Hunt, Guy W. Jensen, E. S. Jackson, Knight, Menard Co., David H. Ladd, R. A. MacIntosh, McCreary Land Co., Joseph F. Pope, Ray A. Palmer, John B. Spaulding, Geo. W. Smith, H. H. Stuart, A. J. Taggert, Walsh, James & Wassy, Warner & Moore, Chas. C. Walton.

TUNNEY STROLLS THROUGH PARIS

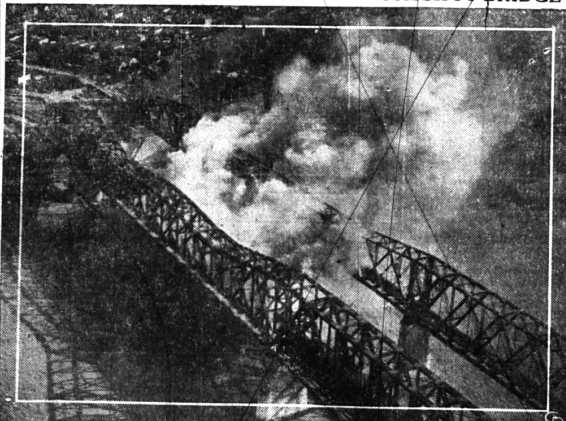


Gene Tunney, retired heavyweight champion of the world, is snapped while promenading on the boulevards of Paris, France, just before he left for Italy to complete arrangements for his marriage there on Oct. 5 to Miss Josephine Lauder, steel heiress of Greenwich, Conn. With Tunney in the photo is M. Peixotto, president of the American club in Paris, at left.

Having His Ups and Downs
"Well, I go home to my downy cot."
"Downy?"
"Yeah, the kind you let down from the wall."—Judge.

Anxious to Please
Boss—"Yes, I want an office boy. Do you smoke?"
Boy—"No, thank you, sir, but I don't mind having an ice-cream cone." — Everybody's Weekly (London).

MYSTERY FIRE SWEEPS GIANT MISSISSIPPI BRIDGE



Flames of an undetermined origin sweeping across the huge Harahan bridge over the Mississippi river at Memphis, Tenn., impeded auto and railroad traffic over the great stream and did damage estimated at over \$800,000. The Harahan span is shown in the foreground with the Frisco bridge, over which all rail traffic was temporarily routed, is shown beyond it.

Head Storm Nurse



Miss I. Malinde Flavey, assistant director of public health nursing for the Red Cross, has left Washington, D. C., for Porto Rico to assume charge of the nursing situation among the hundreds of persons injured during the hurricane which swept the island.

WHO'S YOUR CHOICE FOR NEXT QUEEN OF THE LINKS?



MISS VIRGINIA WILSON



MISS HELEN PAYSON



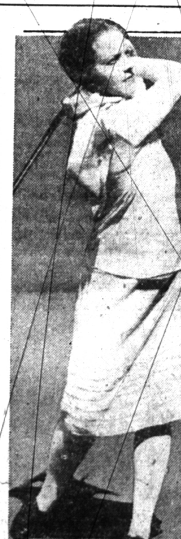
MISS MAUREEN ORCUTT




MRS. DOROTHY C. HURD



MISS VIRGINIA VAN VLEET



MRS. MIRIAM BURNS HORN



It's Too Important To Put Off!

See
THOMAS H. COBB
—Insurance Agency—
FIRST STATE BANK BLDG. PHONE 948-949

PARKS COAL COMPANY, Inc.
118 HIGH ST.
Phones 2020 - 2021

Sand	Lime	Sewer Crock	Brick
Gravel	Metal Lath	Drain Tile	Brixment
Cinders	Rock Lath	Plaster Products	Cement

Hard Coal	Pocahontas
Coke	Bituminous

Garden Fertilizers
Spray Materials

BUY DIRECT FROM THE WOLVERINE WAREHOUSE STORE

One of the Largest Stocks in Michigan
Immense Display
Great Assortment
FURNITURE RUGS
AT THE
BIG WAREHOUSE STORE
Cool Show Rooms

BIG SAVINGS
25% to 35%

OPERATED BY
WOLVERINE MANUFACTURING CO.
Franklin Road and G. T. R. R.
Phone 5600
Ample Parking Space
Open Evenings to 9 P. M.