

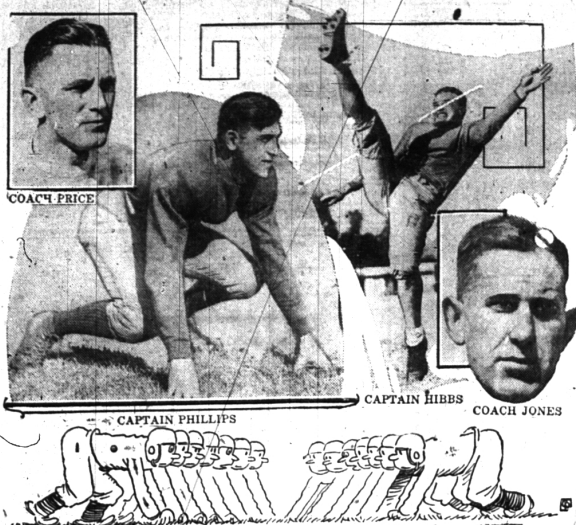
# Interesting News of the Week In Pictures

## TENNESSEE HEARS GOV. AL SMITH



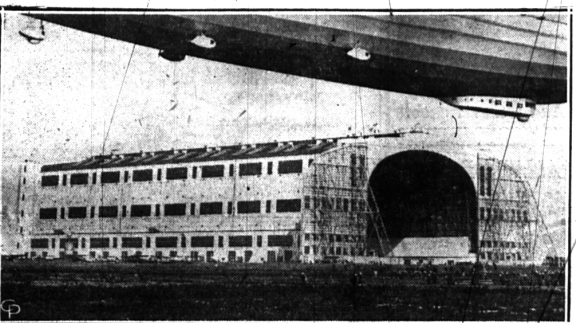
Governor Alfred E. Smith, Democratic presidential candidate, snapped in Ryman auditorium, Nashville, Tenn., on his southern speaking campaign. Mrs. Smith can be seen in the photo next to the governor, and surrounded by Smith admirers.

## CALIFORNIA CLASHES WITH SOUTHERN CALIFORNIA



Those bitter rivals of the Pacific coast, the University of California and the University of Southern California, clash at Berkeley, Cal. The game is one of big ones of the season for coast grid fans. Coach Nibs Price and Captain Irving Phillips lead the California Bears, and Coach Howard Jones and Captain Jess Hibbs the Trojans.

## LAKEHURST GETS OUT "WELCOME" MAT FOR BIG ZEP



The naval air station at Lakehurst, N. J., first port of call in the United States of the giant transatlantic German dirigible, Graf Zeppelin. View shows the hangar at Lakehurst after it had been made ready to house its mammoth guest. The Los Angeles, German-built American dirigible, flying over its sister's "guest room."

## AS VETERANS OF '98 RETURNED TO BATTLEFIELDS



Arrival of the U. S. S. Texas in the harbor of Havana, Cuba, bearing John J. Garrity, retiring commander-in-chief of the United Spanish War Veterans and members of his staff for the veterans' convention in Havana.

## CRACK ARMY SHOT WINS TROPHY



Lieut. Harry Marsh, of the Eighteenth infantry, regular army, holds the world's record in the pistol shoot on a standard army course. He scored 99 2-3 points to break the record at the second corps area pistol competitions, this summer. Above, he is holding the trophy which was presented to him at Governors Island, N. Y., recently.

## Radio Land's Pastor



Dr. S. Parks Cadman, snapped as he arrived in New York after a trip to Europe, appears all set to take charge of his new "pulpit." Dr. Cadman has accepted an offer to preach each Sunday over a nation-wide radio network.

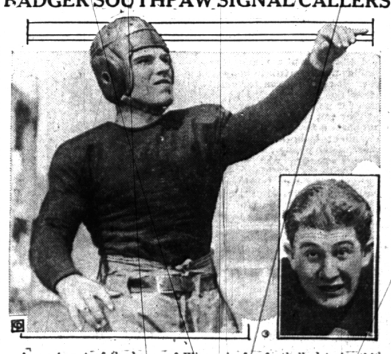
## Now Skate Marathon



Miss Grace Elliott, one of the entrants in a six-day roller skating marathon at Buffalo, N. Y., where long-distance skating bids fair to pass marathon dancing in popularity.

Phone your news items to The Eccentric. Phones 11 and 12.

## BADGER SOUTHPAW SIGNAL CALLERS



A great part of the hopes of Wisconsin for football victories this fall depend on two left-handed quarterbacks. A Southpaw field general is quite rare, especially when they are as adept at hurling passes as Frank Cuisinier, above, and Sammy Behr, inset. Although both are really quarterbacks, Behr some times fills in at half.

## WHIPPET BIG DERBY WINNER



Orphan Girl, speedy little whippet winner of the American Derby, classic dog race, rests from her running in the arms of her owner, Sydney R. Rollins, of Mattapan, Mass.

## MAHAN, BRICKLEY?—CRIMSON HOPE



Enthusiastic Harvard football followers see a resemblance in the backfield running and punting of Tommy Gilligan, Harvard back, left, to the immortal Eddie Mahan used to do those things for the dear old school at Cambridge, Mass. Likewise, the goal kicking abilities of Joe Potter, Harvard toe artist, right, is likened to those of Charles Brickley, another Crimson gridiron god of the past.

**To Your Measure**

HAVING your clothes made to measure gives you a sense of well-being that no ready-made suit can give.

**Exclusive**  
... styles, patterns, fabrics smart, individual.

**Matthew's Tailor Shop**  
Tailoring - Cleaning - Pressing  
Remodeling - Fur Work  
118 East Maple Phone 9011  
"WE CALL FOR AND DELIVER"

**Oil Burners for the home require**

**Clean Fuel Oil**

**We Have It**

38-40 Distillates 28-30 Fuel Oils

Prompt, Courteous Service  
Phone 1639

**TORRENCE OIL CO.**

**MICHIGAN BELL TELEPHONE CO.**

Long Distance Rates Are Surprisingly Low  
For Instance:

**for \$1.35**

or less, between 4:30 a. m. and 7:00 p. m.

You can call the following points and talk for **THREE MINUTES** for the rates shown. Rates to other points are proportionately low.

From Birmingham to:

| Station-to-Station Rate | Day Rate |
|-------------------------|----------|
| CHARLEVOIX, MICH.       | \$1.25   |
| CHICAGO, ILL.           | 1.35     |
| CHILLICOTHE, O.         | 1.35     |
| GARY, IND.              | 1.35     |
| CONNERSVILLE, IND.      | 1.35     |
| LOCKPORT, N. Y.         | 1.25     |
| PETOSKEY, MICH.         | 1.25     |
| PITTSBURGH, PA.         | 1.35     |

The rates quoted are Station-to-Station Day rates, effective 4:30 a. m. to 7:00 p. m.

Evening Station-to-Station rates are effective 7:00 p. m. to 8:30 p. m., and Night Station-to-Station rates, 8:30 p. m. to 4:30 a. m.

A Station-to-Station call is one made to a certain telephone rather than to some person in particular.

If you do not know the number of the distant telephone, give the operator the name and address and specify that you will talk with "anyone" who answers at the called telephone.

A Person-to-Person call, because more work is involved, costs more than a Station-to-Station call. The rate on a Person-to-Person call is the same at all hours.

Additional rate information can be secured by calling the Long Distance operator