

BOWLING

The Architects lead the Masonic league in bowling since Friday night's matches. The Past Masters and Marksmen are in a two-way tie for second place and the remainder of the teams are tied for third place.

The standings are as follows:

Team	W	L	Pct.
Architects	3	0	1.000
Past Masters	2	1	.667
Marksmen	2	1	.667
Builders	1	2	.333
Quarrymen	1	2	.333
Ent's Apprentices	1	2	.333
Overseers	1	2	.333
Fellowcraft	1	2	.333

The scores of Friday night follow:

Builders vs. Architects:				
Stanley	116	148	133	399
Slusser	152	166	198	516
	110	110	110	330
Chapman	188	147	198	523
Harper	144	117	131	392
Totals	710	688	770	2168
Thompson	133	132	148	513
Cassady	108	122	177	407
	110	110	110	330
H. Bell	140	169	183	492
R. Moore	168	166	135	469
Totals	659	699	753	2211

Overseers:

Shumard	148	143	166	457
Bert Moore	147	171	173	491
McClary	147	124	121	392
Abbott	111	133	161	405
Williams	152	111	179	442
Totals	699	682	800	2181

Quarrymen vs. Enter Apprentices:

Ross	159	153	172	482
Anderson	110	110	110	330
Totals	636	659	711	2006
Rhol	146	164	186	496
Randall	177	159	178	451
Peterson	92	141	136	369
	110	110	110	330
Brown	150	183	147	480
Totals	612	757	757	2126
Past Masters vs. Marksmen:				
Cornwell	114	138	147	399
Mansfield	139	105	131	375
McIworr	180	140	141	461
Totals	433	383	419	1235

Ent's vs. Marksmen:

Totals	644	636	628	1908
Neal	146	156	135	437
Fromer	116	107	132	365
ones	118	154	146	418
J. Moore	144	143	154	441
	110	110	110	330
Totals	616	670	687	1991

The scores for the Birmingham bowling league rolled Monday night are as follow:

Birmingham Post Star

The scores for the Birmingham bowling league rolled Monday night are as follows:

Nixon	149	220	128	497
Davidson	151	171	177	499
Thomas	152	174	157	483
Totals	452	565	462	1879
Kurth	132	149	146	427
Bearshear	142	138	196	476
Grovet	161	143	147	451
Totals	433	430	489	1754
Star Lunch	vs.	Jeff	Sandwich	
Shop:				
Jagger	118	146	162	426
Ryan	162	161	120	443
Uberoth	142	156	147	445
Nelson	117	100	111	328

Star Lunch vs. Jeff Sandwich Shop:

Ross E.	148	138	167	453
Gravlin	157	161	177	495
Steska	158	168	148	474
Jones	145	139	116	400
Moore	241	145	171	557
Totals	849	751	779	2379
Williams Boot Shop vs. DeSota:				
Steska	148	108	181	437
Reilly	176	164	149	489
P. Williams	192	140	171	503
Van Every	172	136	200	508
Chapman	149	163	170	482
Totals	837	711	871	2419
Gross				

Williams Boot Shop vs. DeSota:

Drum	125	128	115	368
Gravlin	135	106	160	401
Service	138	175	160	473
Totals	822	730	817	2369

The Moulthrop's Lumber company team leads the Merchant's.

The Moulthrop's Lumber company team leads the Merchant's

bowling league following the alley matches Tuesday night.

The individual high marks rolled are credited to R. C. Moulthrop who chalked up 227. S. Baynes, 218; Martindale, 210; B. Moore, 208; J. Moore, 207; H. Bell, 203.

The present standings are as follows:

Team	W	L	Pct.
Moulthrop Lumber Co.	15	2	.882
Taylor Barbers	14	4	.778
Mahaffy Gas Station	12	6	.667
Thornton's Garage	9	9	.500
Tracy-Cotton	8	10	.444
Bell Bros. Garage	5	13	.278
Star Motor Coach No. 2	4	14	.222

The scores of the matches played follow:

Steta Electric Co.	5	13	Rieck	153	129	141	423
Star Motor Coach No. 2	4	14	Ryan	152	110	157	419
The scores of the matches played follow:				Uberoth			
Thornton's Garage vs. Barbers:				Totals			
Dolin	181	132	140	453	E. Bros. vs. Camels		
Thornton	154	112	165	431	N. Bell	113	111
Chapman	132	155	152	439	Kurth	126	132
Anderson	147	145	141	428	J. Moore	174	183
Minta	138	159	173	470	Bottrell	128	117
Totals	752	703	771	2226	H. Bell	154	179
				Totals	695	712	

Bell Bros. vs. Lumber Co.:

Totals

Totals

Totals

Totals

Totals

Totals

Totals

Totals

Totals

Totals

Totals

Totals

Totals

Totals

Totals

Totals

Totals

Totals

Totals

Totals

Totals

Totals

Totals

Totals

Totals

Totals

Totals

Totals

Totals

Totals

Totals

Totals

Totals

Totals

Totals

Totals

Totals

Totals

Totals

Totals

Totals

Totals

Totals

Totals

Totals

Totals

Totals

Totals

Totals

Totals

Totals

Totals

Totals

Totals

Totals

Totals

Totals

Totals

Totals

Totals

Totals

Totals

Totals

Totals

Totals

Totals

Totals

Totals

The Judson Bradway Co.

announces

NEW MOTORBUS SERVICE

on West Maple Road

to be operated by

BLOOMFIELD TRANSIT CORP.

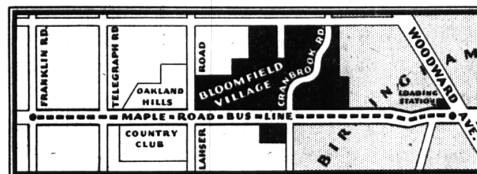
WITH the rapid development of Birmingham westward toward Bloomfield Hills and in anticipation of the future growth of this district, the Judson Bradway Company, in conjunction with the Bloomfield Transit Corp., are pioneering in the establishment of a high class motor coach service on the West Maple Road.

This new bus line, while serving the convenience of Bloomfield Village residents, will provide a means of transportation for the entire West Maple Road district, including Oakland Hills Country Club.

Starting today, a modern 16-passenger

deluxe coach will operate over this route. This new bus is equipped with heaters and individual parlor chairs.

The operating personnel of the Bloomfield Transit Corp. is well qualified to operate a motor coach line. Mr. Louis H. Saunders, local Buick dealer, is president. He brings years of experience in bus transportation gained through his long association with the Reo Motor Car Co. Mr. Horace P. Shaw, vice-president and general manager, is thoroughly familiar with the operation of public carriers, having established and conducted the taxicab business of Shaw Brothers in Birmingham.



"Bloomfield Village Coaches" operate over West Maple Road from the loading station at the northwest corner of Woodward Avenue and Maple Road to Franklin Road. They make regular stops at Judson Bradway's Bloomfield Village and the Oakland Hills Country Club, or, on signal, stop at any point on West Maple Road.

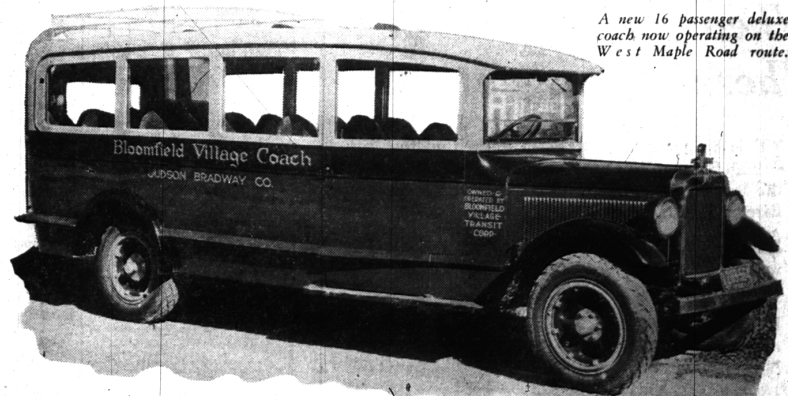
Rate of Fare

The established rate of fare on Bloomfield Village Coaches will be 10c between Woodward Avenue and Oakland Hills Country Club and 15c to the Franklin Road.

Bloomfield Village Coaches leave from the corner of Woodward and Maple at the following time:

7:00 a.m.	10:00 a.m.	2:00 p.m.	5:30 p.m.	9:00 p.m.
7:45 a.m.	11:00 a.m.	3:00 p.m.	6:15 p.m.	10:00 p.m.
8:30 a.m.	12:00 a.m.	4:00 p.m.	7:00 p.m.	11:00 p.m.
9:15 a.m.	1:00 p.m.	4:45 p.m.	8:00 p.m.	

For Complete Information — Phone 550



A new 16 passenger deluxe coach now operating on the West Maple Road route.

LOOK FOR THE SIGN "BLOOMFIELD VILLAGE COACH"

Let Us Fill Your Market Basket with Green Vegetables and Fruits

Once for, once, in the balance of food values—green vegetables and fruits prove their worth as the greatest of body-builders.

We carry complete lines of fruits and vegetables, meats and groceries, and other commissaries—in our new and larger quarters located in the Wabbeek building. Visit us.

STROUP'S MARKET

"Something Good For Every Meal"

WE DELIVER

PHONES

1011 - 1012 - 1013

WABEEK BUILDING