

TENNIS CLUB PLANS GAMES

Village Netmen To Play Outside Teams During Season

Announcement is made today of the tentative matches to be played by the Birmingham Tennis club this summer. For the first time a regular schedule contemplated for the court players who assemble at the club at Lincoln and Figure streets.

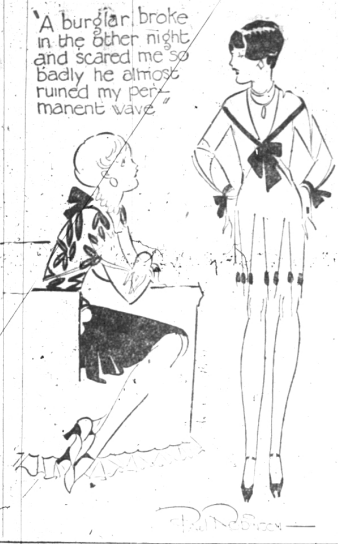
Included in the teams with which the village club will match rackets are Bloomfield Hills, the Detroit Edison club, the Saginaw

Canoe club, the Pontiac Boulevard club, and possibly a team of a Windsor country club. A tilt of the Hills players scheduled for last Sunday on the local club courts was cancelled because of the weather conditions. The bout may be played Sunday, according to reports. Two matches are included with the Bloomfield aggregation one at the Booth estate and one here. The villagers meet the Detroit Edison players on June 9 and 23, one match being staged at each of the clubs.

Seventy new members have been added to the Birmingham organization and effort is being made by Craig Sichey, president, to make the group a community proposition in inviting everyone interested in tennis to join.

The courts are now in regular use and many assemble Saturday afternoons, Sunday mornings and Wednesday afternoons to play. A complete schedule will be announced as soon as final arrangements are made. Those who care to witness the home matches are invited to do so, by the club directors.

JUST AMONG US GIRLS!



A burglar broke in the other night and scared me so badly he almost ruined my permanent wave.

NAVAL ACADEMY GETS GRADUATES

Annapolis To Accept Michigan Men For Coming Year, Announcement States

Young men graduating from the high schools in this vicinity are to be given an opportunity to enter the United States Naval Academy at Annapolis, Md., it was announced in a Navy bulletin from Navy headquarters, at Detroit.

All candidates must enlist prior to July 1, 1928, and on Sept. 1 a preliminary examination is given which qualifies the candidate for the preparatory class. The candidate is then sent to school at either Hampton, Va., or San Diego, Cal., for an eight-month preparatory course. On the third Wednesday of April, 1928, the final examination is taken.

NEW LOCK FOILS AUTO BURGLAR

A still higher margin of protection against car theft now provided buyers of Oakland and Pontiac Sixes through a new type of outside door handle which cannot be forced by the clever thief.

The new door handle is so designed that the customary method of forcing with a wrench or a section of iron pipe will not give the thief entrance to the car. When an extreme pressure is applied to the handle it merely turns without releasing the door catch. A few seconds of attention at any Oakland or Pontiac service station will restore the handle to its original position.

Thus the Oakland Motor Car company, and the Fisher Body Corporation which builds the Oakland-Pontiac bodies, have raised an almost impenetrable first line of defense.

Should a thief effect entrance by breaking a window, or because of a careless driver who locks the car, he still would be confronted by equally secure second and third lines of defense. These are provided by the semi-accidental locking of the door by the transmission with a turn of the ignition key. The transmittion is locked from the dash by an ingenious sliding plunger which moves inside an armored cable extending from the ignition key down into the transmission.

The Oakland and Pontiac Sixes with their three effective lines of defense, are said to be as nearly theft-proof as any car in America.

WE HEARD IT SAID BY—
James F. Wooster, of Poppleton avenue, "I have attended many prize fights in my life, including the Wilmyr, Dempsey and Tanney bouts. For fighting outside of title bouts, I have never seen such a good show as that put on in Royal Oak last Saturday night by the Elk's Lodge there. Every fight was clean, lively, and if the Elk's keep on with such caliber of shows I am sure they will draw some great crowds in the future."

Should a thief effect entrance by breaking a window, or because of a careless driver who locks the car, he still would be confronted by equally secure second and third lines of defense. These are provided by the semi-accidental locking of the door by the transmission with a turn of the ignition key. The transmittion is locked from the dash by an ingenious sliding plunger which moves inside an armored cable extending from the ignition key down into the transmission.

The Oakland and Pontiac Sixes with their three effective lines of defense, are said to be as nearly theft-proof as any car in America.

How to Get to Wolverine Warehouse Store!

From Birmingham and Bloomfield Hills While Saginaw Street Is Torn Up:

Turn West (left) at detour sign on to South Blvd.—go to Franklin Rd. (the first pavement) turn North (right) 1/2 mile to Wolverine.

From East Side of Pontiac

Go to Pike St.—turn West on Pike St. and cross Saginaw St.—go to Cass St. and turn South (left) to Orchard Lake Ave.—turn right and then left onto Bagley St. (first paved St.), drive to end of pavement and down gravel road to NEW Bagley School—turn left one block to Franklin Rd. and left again one block to Wolverine.

OR
Turn South on Paddock St. to Saginaw St.—Cross over on to South Blvd.—drive to Franklin Road (1st pavement)—turn North (right) 1/2 mile to Wolverine.

ALL PAVED STREETS
RUGS FURNITURE
BIG SAVINGS—25 TO 35%
Franklin Road and G. T. R. R. Open Evenings Until 9 P. M.
PONTIAC AMPLE PARKING SPACE

Careful Furniture Moving Phone 572 J. J. WEIER 130 Brownell

HOW to Achieve Beauty

By Mme. Helena Rubinstein

Perfect Teeth—a Bridge to Beauty

Beautiful teeth are truly a Bridge to Beauty. And the condition of your teeth has a definite and decided effect upon your morale, too. It is only natural that you desire to hide our bad points, and for this reason it is not frequent to find a woman or girl with neglected teeth twisting her muscles into all sorts of contortions, to keep from revealing her teeth. It is most important for false teeth to be fitted carefully and correctly, the top of the gums extending well up under the lip almost to the bridge of the nose if a very deep "V" has to be made for the lip cord in front.

pharmacy, will enable you to test the acidity of your mouth. Altogether the care of the teeth may be boiled down to regular dental supervision and absolute cleanliness. And that is little Captain Robert V. Moore's experience when you realize the important relationship your teeth bear to your general appearance. A pretty mouth needs pretty teeth to complement its beauty.

Follow up this record:

Tom Neal	159	179	127	465
Ed Williams	172	229	201	602
De Gibson	147	198	151	496
W. Combs	169	100	117	473
Lois Kemp	199	181	168	548
Total				2575

BOWLING

By the narrow margin of 73 pins, the bowling team of the Birmingham Rotary club defeated a team from the local Exchange club at the Birmingham Recreation club at the Birmingham Rotary club on Thursday night. The score at the end of three

NO JOB TOO SMALL

Painting, Paperhanging, Decorating

ESTIMATES GLADLY GIVEN

AL HENRY
"Satisfied"
"My Mother"
"My Aunt"

415 S. Woodward Ave.
BIRMINGHAM
Phone 1029

BEGINNING MONDAY, MAY 21st

Planting Season Closing Sale

50% Discount

All of our dormant ornamental stock has been reduced 50% as spring planting is nearing the end. We still have a very fine assortment of—

Shade Trees - Flowering Trees - Evergreens
Flowering Shrubs - Vines - Roses
Perennials

DISPLAY GROUNDS AT—
Woodward Avenue, at McLean, H. P.
Grand River Avenue, at Prairie
ALSO
Woodward Avenue, Pontiac

COME AT ONCE AND GET YOUR SELECTION

PONTIAC NURSERIES

Glendale 8507

EUGENE PERMANENTS

WE TEST THE HAIR—Then Wave It

FREEMAN'S—The Permanent Wave People—6 Year Experience

Make Your Reservations NOW!

112 Levenson Building
South Woodward Ave.
BIRMINGHAM

Full Speed Ahead for your light car

\$2800

for Watson Stabilators

New Watson Stabilators, Type AA, Designed expressly for short wheelbase cars—first device of its kind—burns up the bumps. Available for installation on the following cars:

Chevrolet	Chrysler
Dodge	Pontiac
Essex	Nash
Star	Oakland
Whippet	Oldsmobile

Wolverine

Let us put a set of Type AA Watson Stabilators on your car. Then pick the roughest roads you know. Drive over them at any speed. You will marvel at the relaxed riding qualities you're sure to find, no matter how light the car is or how short the wheelbase. You will hardly be able to believe it is the same car.

BIRMINGHAM AGENT
Birmingham Battery Service
125 E. Maple Phone 902

EVERY DAY AT 4:15--

A glass of pure "Body Building" Gabel's Milk will develop your Boy into a sturdy, peppy youngster. There is nothing to equal Gabel's for the after-school snack. Gabel's is a pure nourishing food and youngsters like it!

CALL THE GABEL CREAMERY TODAY FOR PURE MILK SERVICE

Birmingham Branch Phone 536

Gabel's Body Building MILK DETROIT

"More Health to You"