

# Of Interest TO MOTORISTS

## DANGER SEEN IN CROSSINGS

That there are several crossings in Oakland County which offer a peril to motorists is maintained in an article from the Sunday edition of the Detroit News. The article in part follows:

Winding through the hills and valleys of Oakland County, the Richmond branch of the Grand Trunk Railroad creates on several highways conditions that are always a threat to motorists. The fact that trains run at crossing intervals only tends to lessen caution and make the crossings still more dangerous.

One of the most frequently used of these crossings is that on the Dodge road, just east of the Auburn road, where the track crosses the highway at an angle. The motorist approaching the crossing from the north, if he eyes the sign at the side of the road, is completely unaware that he is in the vicinity of a railroad. Two high embankments shut off his view both to the left and to the right. To be sure that a train is not coming from the left it is necessary to move the front of the automobile to a position within six feet of the rail, then turn and look backward up the track. Only by this method can a clear view of the track be obtained.

Probably the most dangerous crossing on the line is that on the Avon road, a short distance from Rochester. The belief of residents of the neighborhood is that only the fact that it is a road seldom used by anyone except those familiar with it has prevented tragedies there.

Approaching from the east the motorist finds himself suddenly looking down upon the track from the brow of a steep but very short hill. High embankments on either side prevent any view of the tracks except where they actually cross the highway. Going over the crest of the hill at 15 miles an hour a car skidded to within 15 feet of the crossing with the emergency brake on. At this crossing it is necessary to drive within four feet of the railroad before a clear view of the track can be obtained.

John Eller of Buffalo, on trial for non-support, declared that he was "right of heart when he married, but light of pocket ever since."

Try An Eccentric Classified Ad.

## NEW DODGE DEALER



G. A. JACKSON

Mr. Jackson is the new head of the Jackson Motor Sales at 119 south Woodward avenue, Birmingham. The sales was formerly known as the Evans-Leger Motor company. Mr. Jackson also has the Dodge agency in Royal Oak and his territory now extends from Detroit to Pontiac.

## OAKLAND WORK BEATS RECORD

Pontiac, Mich., March 27.—The increasing factory facilities of the Oakland Motor Car Company and the heavy winter demand for the Oakland and Pontiac Sixes are reflected in a record March production schedule of 27,773 units 52 issues of The Eccentric \$1.50

## DEVELOPMENT OF FLINT AFTER BUICK INVASION, IS TOLD

Flint, Mich., March 27. Cities twice as many persons as all of which owe their development to a Flint bonsted in 1904, and other simple industry are numerous, but manufacturers in affiliated lines in all the long list there are few such striking instances as that presented by Flint. This statement is based upon a comparison of the Flint of today with that of 25 years ago, before the automobile industry had emerged from the experimental stage into a serious business.

There are many cities whose growth has resulted principally from automotive manufacturing. Flint alone among the manufacturing centers of the world has point, a 100-per-cent growth for which a single industry is virtually alone responsible.

Census figures indicate that there were some 14,884 persons in Flint in 1904, when the Buick Motor Company, which first gained local capital had influenced to locate here, started operations. The company occupied a single small building and employed, at the outset, about 100 men. The first car was finished July 1, 1904, and it waited more than three weeks until July 27, for a buyer. Total production for the year was 37 cars, a very small fraction of a single day's Buick output.

Today, the Buick Motor Corporation alone employs more than

which a growing population called into existence. Smooth paved streets stretch in every direction. The hitching posts are gone, and life and activity are everywhere. For Flint has grown from a town of 14,884 persons to a metropolis of nearly 100,000 and it is still growing steadily.

All of this development has paralleled closely that of Buick. The five years subsequent to 1904 saw production of 20,267 Buick cars, and established Flint definitely as an automobile manufacturing center. This production was more than quadrupled during the next five-year period, when 123,281 Buicks were made. The output for 1915 to 1919 inclusive was 481,048, and for the ensuing five years, 683,241. And the past three years have exceeded even this total, more than 700,000 Buicks having been built with two years of the five still to go.

The Buick factory in which the first Buick car was built could be completely lost in almost any of the 10 plants comprising the Buick factory of today. Land which was meadow and swamp in 1904 has been leveled off, and upon it has arisen building after building—foundries, machine shops, metal-working plants, and offices—served by miles of railway siding and paved street. The Buick factory of today occupies a site 102 acres in extent, one and a half miles long and two to five blocks wide, with more than 200 acres of floor space. It is the largest self-contained motor car factory in the world.

Heating the manifold increases the tendency of the engine to knock if a fuel of partial volatility is used.

At the same time super-heating of a mixture as it passes through the manifold, say, from a valve, a loss in power and an increase in fuel consumption, especially at part-open throttle.

With the better grade of fuel on the market, therefore, auto manufacturers will not be obliged to provide for pre-heating the manifold today. Tall buildings have folded—even for cold weather start-up, leaving business fring.

## Road Gravel

### Property Improvements

GEORGE W. SMITH CO.  
BIRMINGHAM 1370

Body and Fender Repairing  
Top and Curtain Work  
Sedan and Windshield Glass

## Mulchaey's Auto Body Hospital

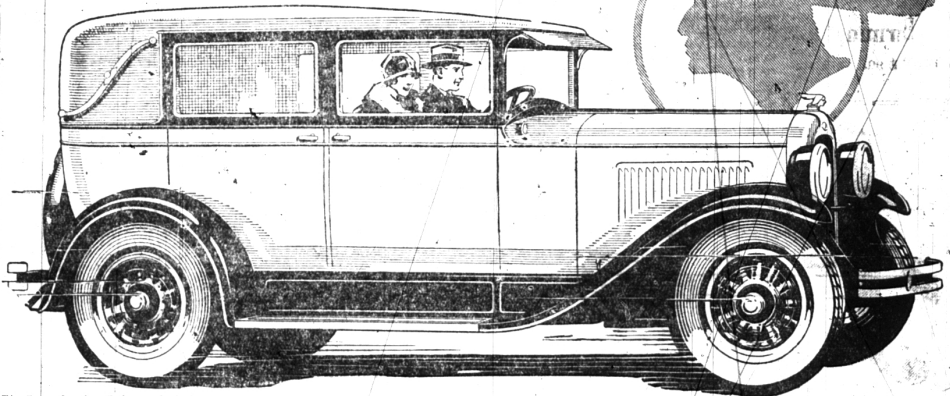
314 S. Woodward

(IN THE CADILLAC GARAGE BLDG.)

Phone Birmingham 1438

Tell Your Merchant You Saw His Advertisement in THE ECCENTRIC

a Successful Six now winning Even Greater Success



The Sport Landau Sedan - Body by Fisher

# Nowhere Else Such Features for

When you actually learn what the New Series Pontiac Six offers you for a base price of only \$745, it's easy to understand the sensational success it is enjoying.

At the right is listed a group of advancements in design which never before have been combined in any low-priced six! Some of them—such as the G-M-R cylinder head and the cross-flow radiator—rank as master strokes of engineering. Yet these are only the new features that have been added to the basic design which enabled the Pontiac Six to make automobile history in the past two years!

You still get the largest engine used in any low-priced six. You still get the long life assured by an

oil system which forces 250 gallons an hour through the engine at 35 m.p.h. You still get the ability to maintain 50 miles an hour or more for as long as you like. Come in! Learn by comparison and by driving that you get the biggest, staunchest, most beautiful low-priced six the market affords today.

Coupe	•••••	\$745
Sport Roadster	•••••	\$745
Phaeton	•••••	\$775
Sport Cabriolet	•••••	\$795
4-Door Sedan	•••••	\$825
Sport Landau Sedan	•••••	\$875

Oakland All-American Six, \$1045 to \$1265. All prices at factory. Delivered prices include minimum handling charges. Easy to pay on the General Motors Time Payment Plan.

# \$745

2-DOOR SEDAN

4-Wheel Brakes and all these Added Features

- New Fisher Bodies
- New Fenders
- New GMR Cylinder Head
- New Fuel Pump
- New Crankcase Ventilation
- New Carburetor
- New Manifolds and Muffler
- New and Greater Power
- New Cross-Flow Radiator
- New Thermostat
- New Water Pump
- New Instrument Panel
- New Coincidental Lock
- New Dash Gasoline Gauge
- New Stop Light
- New Steering Gear
- New Clutch, New Frame
- New Axles, New Wheels

for Economical Transportation



## USED CARS "with an OK that counts"

This Car has been carefully checked and reconditioned where necessary

- ✓ Motor
- ✓ Radiator
- ✓ Rear Axle
- ✓ Transmission
- ✓ Starting
- ✓ Lighting
- ✓ Ignition
- ✓ Battery
- ✓ Tires
- ✓ Upholstery
- ✓ Top
- ✓ Fenders
- ✓ Finish

OK by

Small First Payment—Easy Terms—on "O. K." Used Cars

The red "O. K." tag attached to the radiator caps of our reconditioned used cars, is your guarantee of quality and definite assurance of thousands of miles of dependable performance. If you expect to purchase a used car, come to our salesroom and inspect our stock of OK'd reconditioned cars.

We have the car you want at the price that will please you—and our terms are unusually reasonable—with the lowest financing charges available.

## TRACY & COTTON, Inc.

Open Nights and Sundays Woodward at Ruffner

BIRMINGHAM, MICH.

Associate Dealer

Carlson & Dantzer

Berkley, Mich.

QUALITY AT LOW COST

# SHAW MOTOR SALES

700 S. WOODWARD AVE.

PHONE 116

# PONTIAC SIX

NEW SERIES