

Phone: Oxford 147
Royal Oak 387
MATTRESS Made From FEATHERS
 Box Springs, Down Comforts, Mattresses recovered and remade. Our sterilizing process destroys all moths, worms, removes all chaff, dust and disagreeable odors from feathers.
 Last experience and modern machinery have enabled us to renovate mattresses for a reasonable charge. Phone Oxford 147 and our representative will call and give free estimates. You will not be obligated in any way. One-day Service.
 WE GUARANTEE OUR WORK
Oxford Mattress Company
 Reliable Renovators
 Phone Oxford 147 Oxford, Mich.

DRIVER FINED AFTER CRASH

Man, Wife Hurt, Four Children Escape in Collision

A fine of \$50 and 30 days in the Oakland County jail was the sentence given Arthur E. LaPointe, 4221 Third avenue, Detroit, in Justice Floyd Back's court Monday, when he pleaded guilty to a charge of reckless driving. He was arrested by Bloomfield Hills police last Saturday morning when he crashed into a truck owned by Harley Sias, overturning it on Sias and his wife who had stopped there to repair a tire. Both were injured.

After LaPointe paid \$175 Monday in justice court to cover the damages to Sias' truck the jail term was revoked.

Sias' truck which was loaded with the family's furniture which they were moving to Cheboygan, Mich., was parked off the pavement when LaPointe crashed into it, police say. The four children who were on the truck at the time of the accident escaped injury.

Both Mr. and Mrs. Sias were removed to the St. Joseph's Mercy hospital, Pontiac, where their injuries were dressed, and it was discovered that Sias sustained a fractured leg, a fractured collarbone, and possible internal injuries. However, her condition is not serious.

According to Patrolman, Delas Anderson and Isma Banks, who arrested LaPointe, there were three quarts of liquor in his car.

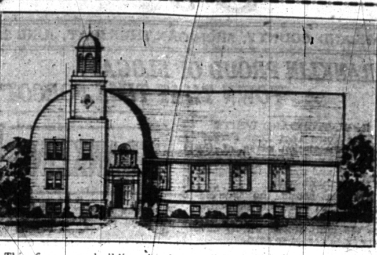
PLAN GALA DAY AT SUBDIVISION

A special day of amusement friends is being planned in the Walnut Lake Estates subdivision No. 1 by Wesley Schroeder, manager of the subdivision. "We are planning on a real day of enjoyment and pleasure for our lot owners and their friends. A famous Detroit orchestra has been secured to furnish dance music for the merry makers. There will be swimming, boating, dancing and games of all sorts," said Mr. Schroeder.

"Walnut Lake Estates is a beautiful development located north of Maple avenue off the South Bloomfield road, about six miles from Birmingham." It has quite a few permanent residences and a number of summer cottages, according to Mr. Schroeder. There are, he says, beautiful winding roads, graded and gravelled, and many conveniences not found in the ordinary lake development.

Henry Arlington of London testified that he usually made \$5,000 a day by betting.

NEW TROY CHURCH



This fine new building is the Troy Center Presbyterian Church, a structure being erected in Troy Center, a part of \$18,000. It is a remodeled bank barn, donated to the Presbyterian Board of Church Extension of Detroit, by the owners, Mr. Frederick Smith and Mr. Joseph Grindley, both of whom are active in the community and church affairs. The architect is John Stahl, of the John Stahl company, of Detroit. Mr. Stahl's residence is not far from the new church. Charles Angerer of Detroit is the contractor.

When the church is completed it will consist of an auditorium seating about 250 people with a basement floor for the Sunday School and social activities also accommodating about 250 persons. A well equipped kitchen arrangement is being installed so that the church building may be a center for community as well as for church activities.

The church in all probability will, according to the Rev. M. C. Pearson, executive secretary of



"the Orchard the Meadow the Deep-tangled Wildwood"

SWEET is the road of life that turns at last back to the peaceful scenes of childhood. After all is said and done there was a quiet joy in those simple things so lightly accepted then . . . so dear to dreams of now.

And so, at length, we draw our plans for a rambling white house, where hollyhocks may mask by sunlit walls, crocuses peep unafraid from the grass, green vines climb up and wind themselves about the windows.

If you dream these dreams come out to Franklin Village. This is the place for such a home. This is the place that will restore to you . . . and give your children, what someday they will prize . . . "the orchard, the meadow, the deep-tangled wildwood" . . . and every loved scene that your infancy knew.

Franklin Village
 GEORGE WELLINGTON SMITH - Developer
 Address: FRANKLIN VILLAGE, MICHIGAN
 Phone: BIRMINGHAM 1370
 Open Evenings

Fresh
 The Best that the Market Affords
Fresh Vegetables and Fruits
 Received Daily
 Phone 904 -- We Deliver Promptly
 GROCERIES VEGETABLES
 FRUITS MEATS
 FRESH FISH
 Always a Complete Line of Cold Meats
 No Parking Restrictions At Our Store
Temple Stores
 FREE DELIVERY
 Corner of Frank and Purdy
 GROCERY 904
 MEAT 1640
 OPEN EVENINGS UNTIL 8 O'CLOCK

COMMUNITY HOUSE DONORS

- Following are the latest contributors in the Community House drive. The names are published as they are submitted to The Eccentric by the House.
- June 28, 1928
- Mr. & Mrs. A. H. Sheffield . . . 2
 - Mrs. W. A. McGregor . . . 25
 - James Couzens . . . 1000
 - Anonymous . . . 1000
 - Consumer's Power Company . . . 475
 - Edith Bookham . . . 10
 - Mrs. E. F. Owens . . . 1
 - Mrs. R. A. Parker . . . 5
 - James Whittemore . . . 50
 - Arthur H. Upward . . . 50
 - Wm. R. Ennis . . . 5
 - Mr. Fyfe . . . 2
 - Mrs. Ernest Osborn . . . 15
 - Mrs. Jennie Forman . . . 25
 - Emma Christensen (Add.) . . . 10
 - Bianche Whittemore . . . 10
 - Miss Margaret Whittemore . . . 30
 - Robert Y. Moore . . . 50
 - Mr. & Mrs. Rohlf . . . 10
 - Millard T. Conklin . . . 100
 - Annie Cleaver . . . 5
 - Louise M. Welch . . . 5
 - Wm. V. Mason . . . 20

FLAG SETS
 for Your Car
Woodward Pharmacy

The WORLD and All By CHARLES B. DRISCOLL

BY PLANE AND TRAIN
 The Pennsylvania and Santa Fe railroads are among the most intelligently directed roads on this continent. I always think of them in a class with Canadian Pacific. Intelligent men are forming the policies of all these roads. I am not surprised to learn that Pennsylvania and Santa Fe are uniting in a venture into air transportation. Charles A. Lindbergh was the logical man for the top of the technical staff, and the brains directing these two good railroads naturally said, "We must have him." And they got him.

Everyone realizes, I suppose, that this is a significant beginning. The daytime hops by plane constitute the first experiments in organized passenger transportation by air by a railway company. Of course, night flying is just as safe as daylight flying. I predict that the passenger line will run night and day within a year of the first flight.

Enough extra fare will be charged to establish a fare differential based on hours saved, I presume, even after the air transport is well established. If the line is well managed (and I have no doubt it will be) the demand for space in the planes will soon exceed the supply.

By flying at night, the run from New York to Los Angeles can be made in two days and nights, even with liberal stopovers. Not everyone wants to fly both day and night—clear across, until suitable berths are installed in the planes. These will come, too.

The United States is just now about to begin to establish passenger transportation by air on a basis that will compare favorably with the lines in Europe.

In ten years we'll be away ahead of Europe. The story of the railroads and the automobiles will be repeated in America, starting slowly, will out-distance the rest of the world when she is really sold on the idea.

My own home town, Wichita, Kansas, is slated to be the central division point in the train-plane system. There are several airplane factories in that town now. Nine years ago, as editor of a newspaper there, I wrote tens of editorials advocating a municipal airport, and got myself handsomely laughed at by a visionary. That's the way this aviation thing is growing. In nine more years the big railroads will be reconciled to the transportation of long-distance passengers by air, while the locomotives pull the freight and the local passengers.

Tufts College at Medford, Mass., is to have a summer school expressly for fathers, mothers, teachers and social workers, to "make them fit to live with children."

ANNOUNCING
A Complete Greasing Service



WE have installed a new electric auto hoist which enables us to lift your car, grease it, oil it . . . with a speed and thoroughness heretofore impossible. Imagine the conditions that springs, shackle bearings, brake connections, and other moving parts underneath your car are exposed to. Part of the time splashed with mud and water, then subject to dust and heat . . . your car is left stiff and dry, so that squeaks creep in and before long become rattles. Eliminate these annoyances . . . bring your car to Birmingham's only auto lift for hi-pressure greasing, oiling, spring-spraying . . . YOU CAN SEE THE WORK DONE THOROUGHLY.

Ask Us For New Low Prices On Kelly-Springfield Tires
McKee Bros. Service Station
 WOODWARD AT LINCOLN
 PHONE 9068

Birmingham Cut Rate Meat Mk't
 130 West Maple Avenue
 Phone 1035

Open from 7:30 A. M. to 9 P. M.

Exclusive Dealers for

"There's a Difference"

Orling Bros. Sausages