

Sand and Gravel

Filling Dirt
Black Dirt
Builders' Supplies
Metal Lath

Pontiac Paints and Oils
Coal and Wood

PARKS COAL CO.

118 HIGH STREET PHONES 2020-2021

STUDEBAKER COMMANDER

Tops

Uniontown's famous hill
at 60 mile speed

Smashes all records

World's Champion Car

Over the top of Uniontown Hill at 60 miles an hour! That's the spectacular performance of a strictly stock model Studebaker Commander Sedan, sweeping aside decisively the best previous record of 51 miles an hour.

And that's not all! As further clinching assurance of the Commander's unmatched mountain climbing ability, it later swept up the heart-breaking, tortuous grade and over the top at 31 miles an hour, with 14 persons swarming upon its running boards (a total of 2296 pounds).

Automobile editors of Pittsburgh newspapers were passengers in The Commander and certified the exact speeds attained. Pittsburgh police certified the accuracy of the speedometer. Mayor L. S. Crawford of Uniontown and scores of spectators observed the tests.

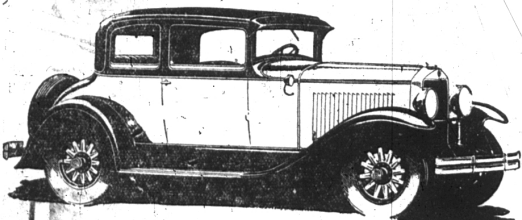
"A Ball of Fire"

—that's what one owner calls his Commander. "A 'hill hound'—knocks the 'out of altitude,' writes another. "If my Commander had claws it could climb trees," declares a third. When this World's Champion car can be bought for \$1435 f. o. b. factory, why be content with less?

In four prices Studebaker offers you champion cars—each backed by Studebaker's 76 years of manufacturing integrity! The *Exline Six*, \$795 to \$965; *The Director*, \$1195 to \$1495; *The World Champion Commander*, \$1435 to \$1615; *The President Straight Eight*, \$1985 to \$2485. All prices f. o. b. factory.

Jewell Motors, Inc.

CLAUDE E. MOSHER, Manager
132 WEST MAPLE AVE. PHONE 1450



A Real Difference In Performance

We cordially invite you to drive one of the Graham-Paige sixes equipped with four speeds forward. You will find nothing new to learn; the gear shift is standard. But there is a real difference in performance—in traffic, on the open road, and up steep grades. And we want you to appreciate, and to enjoy, this difference.



Five chassis—sixes and eight—prices beginning at \$960. Car illustrated is Model 619, four-passenger Coupe, with deep speed transmission, (standard gear shift), \$1575. All prices f. o. b. Detroit.

Joseph C. Graham
Robert C. Graham
Ray A. Graham

Bloomfield Center Service

Phone Birmingham 1155
BLOOMFIELD HILLS, MICHIGAN

GRAHAM-PAIGE

Theaters

BIRMINGHAM
Friday
Next Friday is the date announced by Manager Chapman of the Birmingham Theater for the coming of Rin-Tin-Tin in "Rinty of the Desert," a Warner Bros. production. The story was written by Frank Steele and adapted by Harvey Gates. Ross Lederman directed. The cast includes Carey Ferris, Carol Nye, Paul Panzer and Otto Hoffman.

Saturday
As adventurous an existence as any he portrays on the screen, has been led by Reginald Denny, popular film star, whose latest Universal picture, "Good Myning, Judge," at the Birmingham Theater, Saturday.

Sunday-Monday
An aviator in the war, a professional boxer, an opera singer, actor and traveler, are a few of the accomplishments of this interesting individual.

Tuesday
"Widowhood Preferred," Metro-Goldwyn-Mayer's new feature which is coming Tuesday to the Birmingham Theater with Leon Cody and Aileen Pringle in the co-starring roles, was filmed against a background of the famous and beautiful caves of La Jolla, Cal., as well as the new exclusive hotel, Casa Manana. The picture is said to be the best this co-starring team has yet offered picturegoers.

Wednesday-Thursday
"Dolores Del Rio in 'Ramona,'" Helene Hunt Jackson's American Classic picture, is a vivid drama told against the stirring background of untamed California in the colorful days of the gold rush. The benefit performance on Wednesday night is sponsored by the Business and Professional Woman's club of Birmingham to increase the Community House fund. It is expected that a large crowd will attend the performance and it is suggested that tickets be purchased from members of the club.

GARRICK

An innovation for the East and surely Detroit is considered a part thereof, though New York City districts in being considered the sole East is the fact that the cast that produced in San Francisco, the Community House, Miss Sears and Reta Lambert, comedy features in the popular comedian, tragedienne and movie star, Pauline Frederick.

This is the first time in theatrical history that a company has been brought intact from the Pacific Coast and the arrangement

Recognize 'Em?



Movie stars were one-time kiddies, too, without a thought that they would some day shine on the screen. Above is Esther Ralston at the age of 12, and, below, little three-year-old Lucile La Sear—now known as Joan Crawford.

was only made possible through the fact that Mr. L. C. Wray, the owner, is a friend of a local theatrical man.

Briefly, a comparatively young woman has been dominated by a hard father. He passes on, leaving her a comfortable income and she goes to New York City for a year of life, later returning to her hometown with an infant. Busy mothers of course attach a scandal and these same gossipers brand her "The Scarlet Woman." The men in the town take a different viewpoint as seen in several of the feminine sex of a young woman. Miss Sears and Miss Lambert are claimed to have written a play devoid of common sense, but redolent with real comedy and a heart appeal that is stimulated through the fact that a rotating viewpoint is an important member of the cast. It is a play that is recommended by Pacific Coast critics, just with a punch and a laugh for all.

BONSTELLE

By special arrangement with William A. Brady, Miss Bonstelle presents Grace Craig's new play, "All the King's Horses," by Charles Elton Openshaw, at the Bonstelle Playhouse, Miss George will be supported by the Bonstelle Company. This will be particularly a gala occasion, for it also marks the return of Jessie Royce Landis, a former favorite leading lady with the Bonstelle Company. Miss Landis will appear with Miss George's first appearance on the Playhouse stage, and the first performance of her play in this country. It played with great success last year in London, with Irene Vanbrugh in the leading feminine role, and Miss Vanbrugh is now touring with the play in Australia.

Miss Bonstelle has been eager to persuade Miss George to appear with her company, and now that the Detroit Grand has become a reality, Miss George is happy to be the first guest star to appear under the new organization.

"All the King's Horses" is the story of a male Craig's Wife, told with delightful humor and laughable scenes, along with some serious and dramatic moments. The playwright is the theme, as in "The Silver Cord" it was the self-mother who held chief place. In this play the loss of a mother is the thing that saves the family from disaster. She has the courage to defy her husband, to stand behind her children's search for happiness. When the crash comes and the husband, like Humpty-Dumpty, finds himself completely finished by his great fall, it is his wife who comes to his rescue and rebuilds him to the

WE HEARD IT SAID BY—
Miss Mabel Vernon, national executive secretary, Woman's Party; "The National Women's Party" stands for equal rights between men and women and will ask both the Democrats and Republicans to endorse this plank in their platform."

man he once was. As a comedy the play is filled with laughter and amusing situations and dialogue and there is also enough of tense drama to lend weight to the lighter moments.

CASS
Schwab and Mandel's production of "The Desert Song," the outstanding romance of this generation, is now enjoying a summer run at the Cass Theatre, Detroit.

The story of "The Desert Song" is fascinating in the extreme and is laid in Northern Africa during the recent Riff rebellion. It concerns Pierre Birabeau, a young French officer who, resenting the attitude of the military forces against the tribesmen, was disgraced by a superior officer, decided on a Robin Hood career in Morocco. His position becomes rather difficult when his father, General Birabeau, is made prisoner by the tribesmen and Pierre maintains his place in his father's household without arousing suspicion that he is the dreaded Red Shadow. But when Major Bonvalet, whom he has loved as a child in France, comes to visit the General and threatens to fall in love with Captain Paul Fontaine, of the Foreign Legion, Pierre's position becomes almost unbearable. He cannot take his place as a rival of Fontaine without revealing his true existence.

Azuri, a native girl who has fallen in love with Captain Fontaine, is the General and threatens to fall in love with Captain Paul Fontaine, of the Foreign Legion, Pierre's position becomes almost unbearable. He cannot take his place as a rival of Fontaine without revealing his true existence. Azuri, a native girl who has fallen in love with Captain Fontaine, is the General and threatens to fall in love with Captain Paul Fontaine, of the Foreign Legion, Pierre's position becomes almost unbearable. He cannot take his place as a rival of Fontaine without revealing his true existence.

The cast to be seen in Detroit is headed by Alexander Gray, Charles Lansing and Bernard Granville and includes an ensemble of 100, including a stirring Male Chorus.

UNITED ARTISTS'

Corinne Griffith's "The Garden of Eden," differs from earlier Griffith films in many ways. One of its chief distinctions is that the material was adapted from a contemporary stage success and the picture was being made before the stage version had reached London and New York—which reverses the usual American procedure of waiting until a play has made a hit in the United States before adopting it for the screen.

"The Garden of Eden" opens with a scene of a young woman, Corinne Griffith, who is being pursued by a man, Charles Lansing, who is being pursued by another man, Bernard Granville. The scene is set in a garden and is a classic example of Griffith's dramatic style.

B'ham Sign Co.
113 Brownell
Phone 560-W
LET US SERVE YOU

its Detroit engagement Friday, June 15 at the United Artists Theater for its first showing in this locality, also offers Miss Griffith in a part imbued with more comedy than those she usually plays.

A small brown bear of a lively disposition was among the birthday gifts received by Mrs. Marjorie Carlton of St. Louis.

PURE SALT is necessary to get the maximum efficiency out of your water softener.

McClellan & Son

Phone 314

That Your Garden May Be Even More Beautiful

WE OFFER

Lawn Pieces of Crushed Marble

Add to the enjoyment of your garden by placing a crushed marble lawn piece 'neath this tree, or over in that corner that has always looked so empty. This lawn furniture) one piece, or in combination will always prove interesting and original to your friends, and will afford you a lot of satisfaction. Fashioned by experienced craftsmen, it is good looking, and the durability and strength makes it very economical.

Bird Baths \$11 to \$25
Flower Pots and Urns \$5 to \$20

MANY MODELS OF LAWN BENCHES

—and for our feathered friends

BIRD HOUSES

\$1.25 to \$2.00

BIRMINGHAM LAWN SUPPLY CO.

BIRMINGHAM, MICHIGAN
410 S. WOODWARD PHONE 123

CHOOSE BY COMPARISON

If you want to know why the new Oldsmobile Six has aroused such enthusiasm among buyers of taste and discrimination—we have an interesting book for you to read. It will be handed to you free or mailed at your request. It tells the whole story of Oldsmobile's fine car performance, fine car steadiness and fine car comfort. It shows why Oldsmobile is so superbly smooth, so fleet in traffic, so long-lived and enduring. It explains why Oldsmobile bodies by Fisher are so free from rumbles and rattles, why they invite restful relaxation, and why they retain their original smartness so long. This book will enable you to compare Oldsmobile, point by point, with all other cars—and learn why it is everywhere spoken of as the fine car of low price. Get your copy today!

TWO-DOOR SEDAN f. o. b. Lansing \$925

OLDSMOBILE

PRODUCT OF GENERAL MOTORS

RAMSEY'S AUTO SERVICE

OLDSMOBILE SALES AND SERVICE
ROBERT E. RAMSEY, Proprietor
113 Brownell Phone 725

THE FINE CAR OF LOW PRICE