

Of Interest To Motorists

ASSOCIATION IN PROGRAM

Alfred Reeves, general manager of the National Automobile Chamber of Commerce, is to speak at the eighth annual convention of the Michigan Automotive Trade Association on "What 1928 Holds for the Automobile Dealer." The convention will be held next Wednesday, which is "Michigan day" at Detroit's twenty-seventh annual Auto show, starting at 10 a. m. and continuing through until 9 p. m. All sessions will be held at the Hotel Statler.

Mr. Reeves, as general manager of the manufacturers' organization, is particularly well fitted to discuss so important a topic to the retail trade. He has been an important figure in the automotive industry for more than two de-

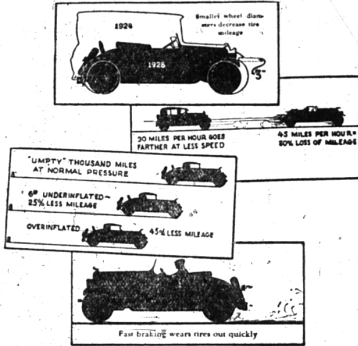
ces. Practically all of that time he has been connected with a national manufacturers organization, being manager of the former Association of Licensed Automobile Manufacturers in the days of the Seiden patent controversy. He will be the only speaker at the banquet, with J. Lee Barrett, executive vice-president of the Detroit Convention Tourist Bureau, master of ceremonies.

OHIO PLANS STATE SAFETY CAMPAIGN

The Ohio State Automobile association is planning for a statewide safety week to be held the week of April 23. The safety committee of the association is working out the program, which will include the testing of brakes, the inspection of headlights and a general educational campaign towards greater safety in traffic.

About 400 cities in the United States now refuse to employ married women as school teachers.

OPERATING AND MILEAGE



That several operating conditions are responsible for variations in tire mileage, of which the design of automobiles. One of some automobile owners complain, the most radical has been the much smaller wheels which, of course, requires smaller tires.

The natural conclusion is that a small tire will wear out faster than a large one.

Next, is the effect of severe braking on tires. In one instance, a test was made when the speed of a truck was maintained at 35 miles an hour and was brought to a stop, without skidding, every quarter mile. The result was that in a little more than 100 miles of tire wear which account for some users getting short mileage from even the best of tires.

The illustration at the top shows how smaller wheel diameters, causing skidding that often leaves

a trace of rubber on the pavement and a flat place on the tread of the tire.

"With four-wheel brake equipment the car can be brought to a sudden stop with a minimum amount of effort on the part of the driver, and it is practically impossible to slide the wheels."

"The resulting wear on tires is therefore over the entire circumference. This makes it very difficult to prove excessive use of brakes; but nevertheless the tires will show fast wear."

"Too little or too much air in tires has an important bearing on tire mileage, too. The figures in the chart are based on actual tests."

"The wear on under-inflated tires is comparatively more serious than on over-inflated tires. The third illustration in this group shows what happens when all four tires were under-inflated, while the figure of 45 percent less mileage represents the wear wheels with too much air and driven at high speed."

"Mechanical irregularities such as misalignment of wheels or rims on the wheel, bent spindle, wobbly wheels, or uneven brake adjustments take their toll in excessive tread wear."

"Fast driving also means rapid tread wear. Rough road surfaces test. The question of inadequate

and hilly country are harder on tire mileage than level territory and smooth roads. Tires wear out faster in summer than in winter and tread wear is faster on dry roads than on wet."

"Changes in car design and operating conditions have come singly and perhaps their importance in the total is not generally recognized in considering causes for rapid tire wear."

"The investigations outlined prove how greatly these factors can affect tire mileage. To get the long satisfactory mileage that Goodyear builds into its tires we urge motorists to take these facts into careful consideration."

Famous Paris Horns May Be Banned

A new set of traffic rules is to be formed to regulate traffic in Paris, France. The possibility of restricting the use of motor horns is being considered. Drivers habitually use their horns to excess; for instance, it is not uncommon for a whole lot of drivers, who are being held up by a policeman for what they consider an unreasonable time to blow their horns.

"Fast driving also means rapid tread wear. Rough road surfaces test. The question of inadequate

lighting on vehicles is also being considered. One may still see in Paris a youth on a motorcycle carrying a Japanese lantern in his mouth, or a motorcar lighted by a couple of paper lanterns, apparently with the consent of the police.

A new motorcycle carries a side car which may be used as a boat in crossing bodies of water.

USE MILES OF TAPE
More than a mile of paper tape passed through the electric timing machine used by the American Automobile Association for the 25,000-mile endurance run in which three Studebaker Commanders set new world records at the Atlantic City speedway. Every time a car crossed the starting line the time for each lap was recorded on the tape.

CHRYSLER Sales and Service

WE are making a strenuous effort to maintain a high grade service station where Chrysler owners may receive expert and prompt attention.

We have experienced, courteous men who are instructed to let nothing prevent them from giving satisfaction to our customers.

If you are not already giving us your patronage we invite an opportunity to serve you.

SHAW BROS., Inc.
110-Brownell Phone 550

NEW LOCATION

Mulchaey's Auto Body Hospital

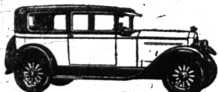
— NOW AT —

314 S. Woodward
(IN THE CADILLAC GARAGE BLDG.)

BODY AND FENDER REPAIRING
TOP AND CURTAIN WORK
SEDAN AND WINDSHIELD GLASS

Phone Birmingham 1438

Buick Beauty • • • Buick Luxury • • • Buick Performance for only \$1195.



Series 115 five-passenger two-door Sedan — an ideal car for general family use. \$1195 f. o. b. Flint, Mich.



Series 115 two-passenger Coupe. A typical Buick value—especially popular for business. \$1195 f. o. b. Flint, Mich.



Series 115 four-passenger Sport Roadster. Smart, low-swing, youthful—a Buick through and through. \$1195 f. o. b. Flint, Mich.

You can buy a Buick closed car at prices as low as \$1195, f. o. b. factory. You can buy it on the liberal G.M.A.C. plan—with a moderate down-payment which may be taken care of by your present car in trade.

These prices mean maximum value, and in Buick you get the fine quality-features found in the most expensive cars.

You get real beauty—real comfort—real performance.

You get such advantages as Buick's Lovejoy hydraulic shock absorbers; Buick's famous valve-in-head six-cylinder engine—vibrationless beyond belief; Buick's sealed chassis; and Buick's smart, low-swing bodies by Fisher—advantages not to be duplicated in any other car of comparable price.

You get the unrivaled value resulting from Buick's unrivaled production in the quality field.

Come in—see Buick—compare it with other cars of similar price—then let the facts decide you to buy Buick.

SEDANS \$1195 to \$1995 COUPES \$1195 to \$1850
SPORT MODELS \$1195 to \$1525

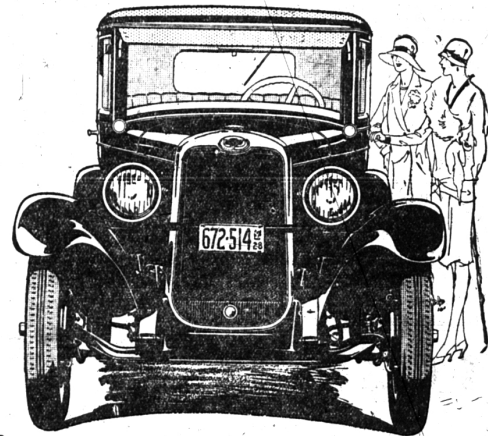
All prices f. o. b. Flint, Mich., government tax to be added. The G.M.A.C. finance plan, the most desirable, is available.

BUICK

Rollin H. Williams

602 S. WOODWARD — PHONE 1200

WHEN BETTER AUTOMOBILES ARE BUILT, BUICK WILL BUILD THEM



Again— Chevrolet Electrifies America with a Great New Motor Car

A new automobile so sensational as to electrify the nation!

With marvelous new Fisher bodies offering all the distinction, beauty and luxury for which Fisher craftsmen are famous! With performance that is a revelation to owners of even higher priced cars! With 107-inch wheelbase—four inches longer than before! With four-wheel brakes—and many additional mechanical achievements!

And... prices that demonstrate again Chevrolet's ability to provide the utmost in modern motoring luxury at the lowest possible cost!

The engine of this great new car is of the improved valve-in-head design. With alloy "invar strut" pistons... specially designed hydro-laminated camshaft gears... mushroom type valve tappets... and a complete new steel motor enclosure—it provides a type of motor operation so thrilling that it must be experienced to be appreciated!

Coupled with this thrilling acceleration and speed is a

type of riding and driving comfort almost unbelievable in a low-priced car. Four inches longer than the previous Chevrolet chassis... swinging low to the road... and with four semi-elliptic shock absorber springs—the Bigger and Better Chevrolet holds the road with a surety that is simply amazing, and rides in perfect comfort at high speeds over the roughest stretches of highway.

And never before was a low-priced car so easy to drive—for the worm and gear steering mechanism is fitted with ball bearings throughout... even at the front axle knuckles.

All these spectacular new mechanical advancements are, of course, in addition to the host of notable features that Chevrolet has previously pioneered in the low-price field.

Come in and see this latest and greatest General Motors achievement! Learn why it is everywhere the subject of enthusiastic comment—why everywhere it is hailed as the world's most luxurious low-priced automobile.



Prices Reduced

The Roadster	\$495
The Touring	\$495
The Coach	\$585
The Coupe	\$595
The 4-Door Sedan	\$675
The Sport Cabriolet	\$665
The Imperial Landau	\$715
Light Delivery (Chassis Only)	\$375
Utility Truck (Chassis Only)	\$495

ALL PRICES F. O. B. FLINT

Tracy & Cotton, Inc.

Open Nights and Sundays Woodward at Ruffner
BIRMINGHAM, MICHIGAN

QUALITY AT LOW COST