

Body and Fender Repairing
Top and Curtain Work
Sedan and Windshield Glass
Mulchaey's Auto
Body Hospital
314 S. Woodward
 (IN THE CADILLAC GARAGE BLDG.)
 Phone Birmingham 1438

AUTOBERTHS
INNOVATED

Full length berths for automobile tourists which take practically no space to carry and afford perfect sleeping arrangement is the latest invention to increase the comfort and enjoyment of the millions of automobile tourists this year. The berths are carried inside of the automobile without encroaching on the seat compartment room, can be made up without getting out of the car and are equipped with curtains, thus giving complete privacy.

This new automobile berth has been devised particularly for the Oldsmobile two-door sedan, al-

though it can be adapted to other makes of the same model. The equipment consists of two single beds, springs, mattresses, ceiling upholstery and four side curtains for the windows at night, front curtain and dome light.

The complete outfit is carried inside the car securely fastened to the roof. It weighs only 14 pounds and occupies only 1 1/2 cubic feet of space. When made up it is self-supporting, therefore not injurious to set cushions or upholstery, and approximately the size of a full length double bed.

The frames of the autoberths are made of treated aluminum alloy which combines exceptional strength with light weight and compactness. The springs are integral with the frame. They are fastened at the bottom of the frame by helical steel springs. The bed springs are made of flat tempered spring steel, each strip being about one-half inch wide. These are given additional support by four cross bars of the same strong, resilient material.

When not in use the berths with mattresses and bedding are held firmly to the ceiling of the car. They are fastened in front by steel hooks riveted to a steel bar which is attached to the car at the junction of the roof and top of the windshield frame. At the rear the berths are held by unique catches resembling the type used to lock window sashes but made eccentric to lock the berths securely to the roof.

well repeal the act and pass another that the women will obey." The new Paris traffic ordinance is not radical. It merely tries to keep pedestrians on the sidewalks and to force them to cross at the corners, instead of jay-walking. Pedestrian lanes are outlined by studs set in the pavement. Islands and safety zones are raised from the pavement about six inches, and lights set flush in the tops to warn motorists of the obstacles at night.

M. Chiappe said he would like to bar private cars from the central district and force riders to use public vehicles, but that he realized public opinion was not yet educated to that point. He has enough trouble on his hands trying to convince the women that the present ordinance is not too strict and that they should obey it.

According to Prof. Griffin, whose deductions are contained in a brochure, entitled, "The Life History of Automobiles," published by the University of Michigan:

"The mortality rate for automobiles follows a curve similar in form to that for human lives and for various types of industrial goods," said Prof. Griffin.

"The rate at which automobiles of a given year's production are eliminated from use is indicated by the following facts: Of any given 100,000 cars placed in use, 75 percent will still be in use at the end of 4.75 years, 50 percent at the end of 6.94 years and 25 percent at the end of 9.2 years."

These figures, as compiled by Prof. Griffin, after an exhaustive research clearly indicate the value of the unused transportation offered to buyers of used cars.

"The average length of life of automobiles has shown a definite, though not a steady increase," said Prof. Griffin.

For Sale
CHRYSLER COACH
 1927

Fully equipped - Bumpers - Trunk Extra Tire. The finish and mechanical condition will satisfy the most critical buyer.

\$495

1926 Chrysler Coupe - **\$350**

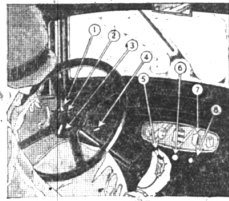
TRACY & COTTON, Inc.
 Woodward at Ruffner
 Birmingham

World's greatest Value
and Outselling all sixes

The world's largest sale of 6-cylinder cars became an Essex achievement solely because of merit.

All 6-cylinder sales records are swept aside in the enthusiastic reception everywhere accorded the New Essex Super-Six. Many communities report 100%, 200%, even 300% greater sales than for the corresponding period of last year, which was the former all-time Essex record.

In all ways the New Essex Super-Six is engineered to the lowest operation and maintenance costs. And increasing thousands of owners rolling up thousands of miles of service prove that these qualities which delight you on your first ride are just as lasting as they are brilliant.



Simple, Compact and Convenient

1. Light control
2. Horn button
3. Throttle
4. Radiator shutter control
5. Starter
6. Electro-lock
7. Gasoline gauge
8. Choke

COUPE - \$765 (Double seat \$30 extra)
 COACH - \$735 (Sedan 4-door) - \$795
 All prices f. o. b. Detroit, plus wear excise tax

Drivers can buy for care out of license at lowest available charge for interest, handling and insurance.

ESSEX Super-Six

Boughner Bros. Garage
 134 S. Woodward Ave. Birmingham

Under The Hood

Dirt is the great enemy of motoring. It must be kept from all parts of the car, if the engine, chassis and other mechanical parts are to be in good condition.

Appearance of the body is secondary to the proper maintenance of those parts that dirt can attack and injure. Now is the time to ward it off.

To help keep dirt from the moving parts of the engine, we have air filters, air cleaners and fuel filters. But these parts become clogged with dirt and need cleaning at least once a week.

This is the time to do it.

A recent cleaning of automobiles by engineers of a company manufacturing fuel and oil filters showed that these parts collected more than a pound of dirt from these liquids. If this material isn't cleaned out of the filters, they become clogged and useless.

Since oil and fuel pass through these parts before entering the places where they are needed, it is essential that the cleaners be kept from clogging up. Otherwise, the whole system will choke up.

Dirt settles also in the vacuum tank and in the main gas tank. These should be drained until the gasoline comes out clean. It's not much, but the little left there might clog up the fuel line and check the whole supply system.

Even with those drained clean, the fuel line should be blown out. Impurities of greasy dirt passing through the line might stick to the sides and, after collecting on another, might cause the whole line to be clogged up.

The carburetor, too, should be drained clean the same way, and the needle and valve washed out with kerosene.

In cleaning the cooling system of an accumulation of grime which is very liable to clog the radiator—drain out the old water, then fill with fresh water in which baking soda has been mixed in the proportion of a heaping tablespoonful to a gallon. Run the car for a day or so, then drain again. Flush the cooling system with fresh water, while the engine is running slowly, and then fill up with fresh water.

Women Have Say
Of Paris Traffic

PARIS—Rome decided to end its traffic difficulties 17 centuries ago by barring all chariots and other vehicles from the city, but the Roman women forced the repeal of the ordinance by combining and refusing to bear any children until they could drive and park where they pleased.

Such is the historical incident cited by Jean Chiappe, prefect of police, in support of his declaration that the women decide whether any new traffic measure can be enforced. Paris now has a new traffic law and M. Chiappe is trying to convince the women that it is just and necessary.

"If the women accept it, we can enforce it," said the prefect. "We can reason and apply authority with the men. But when the women en masse decide that a law is just another one of those foolish man-made things, and all of them deliberately ignore it, what can the poor police do? One might as

FIGURES GIVEN
IN USED CARS

Of exceptional interest to the prospective purchasers of used cars is an analysis of the average length of life to be expected from used cars of various ages, prepared by C. E. Griffin, professor of marketing in the School of Business Administration, Bureau of Business Research, at the University of Michigan.

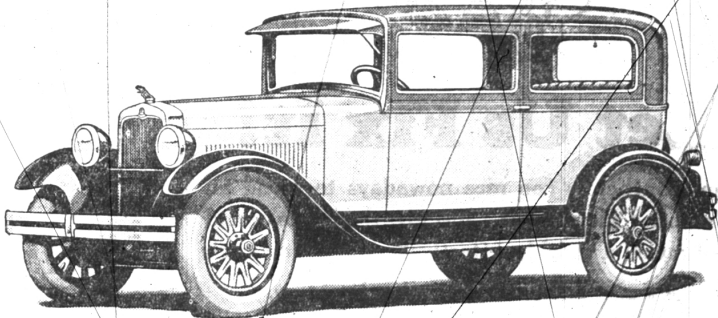
The average life of motor vehicles generally is 7.04 years, according to Prof. Griffin, whose deductions are contained in a brochure, entitled, "The Life History of Automobiles," published by the University of Michigan.

LEAVE THE CAP IN PLACE

In washing out the cooling system with salt soda, many car owners make the mistake of leaving the radiator cap off. The result is that when the cleaning solution used car of various ages, prepared by C. E. Griffin, professor of marketing in the School of Business Administration, Bureau of Business Research, at the University of Michigan.

The average life of motor vehicles generally is 7.04 years, according to Prof. Griffin, whose deductions are contained in a brochure, entitled, "The Life History of Automobiles," published by the University of Michigan.

STUDEBAKER
 The Great Independent



Now, for only \$295.00 DOWN
ERSKINE SIX

Balance on liberal budget payment plan
We accept your present car as cash.....

OWN the proved champion of its class! A stock Erskine sedan recently traveled at better than 54-mile-an-hour speed for 24 consecutive hours, establishing a record for stock cars priced under \$1,000.

Deep, restful upholstery—seats like easy chairs. Luxuriously fitted even to arm rests and ash receivers. Amplified-action, 4-wheel brakes. Oil change necessary but once every 2500 miles.

You can drive your new Erskine Six at 40-mile speed the day you buy it—62-miles-an-hour later. This means engineering genius, precision workmanship, quality materials and rigid inspections formerly found only in cars costing thousands.

See this great new Erskine—TODAY. Avail yourself of this easy way to buy a car of the sturdy integrity which has been characteristic of Studebaker throughout seventy-six years.

New riding ease—the Erskine's springbase equals four-fifths its entire wheelbase!

THE STUDEBAKER LINE				
Model	Seating	Price	Price	Price
PRESIDENT EIGHT	100	80	\$1985 to \$2450	
THE COMMANDER	85	72	\$1495 to \$1665	
THE DICTATOR	70	65	\$1195 to \$1295	
ERSKINE SIX	43	62	\$795 to \$965	

Jewell Motors, Inc.

CLAUDE E. MOSHER, Manager
 132 WEST MAPLE AVENUE
 PHONE 1450

Beautiful in design—thoroughly modern—mechanically right

COME TAKE A DRIVE



Whatever the standards may be by which you judge car quality and value, you'll find them met beyond expectation in this "Fine Car of Low Price."

Get behind the wheel. Notice first the luxurious finish and completeness of appointments and then the roomy comfort of smart Fisher bodies.

How easily the car starts! How smoothly, silently, swiftly you speed away from other cars in traffic—throttling down to a walking pace when necessary, and accelerating

from 5 to 25 miles in 8 1/2 seconds in high gear! Here's generous power for sparkling performance... speed to meet every emergency and every desire—exhilarating and easily controlled.

In its fine car balance of all features from luxurious, artist-created bodies to new 55 horse power high-compression engine—you'll agree that this new Oldsmobile Six is two years ahead.

Come take that drive today. Let your own experience show you why thousands of buyers are choosing Oldsmobile.

\$925
 Extra Tax and Spare Tire Extra
 f. o. b. Lansing

OLDSMOBILE
 PRODUCT OF GENERAL MOTORS

RAMSEY'S AUTO SERVICE
 OLDSMOBILE SALES AND SERVICE
 ROBERT E. RAMSEY, Proprietor
 113 Brownell Phone 725

TRUCKING
 OF ALL KINDS

Ashes Collected
Tin Cans Removed
Norman L. Shovan
 316 Lincoln Ave.
 BIRMINGHAM
 Phone 1480-W