

### LIBRARY ADDS NEW VOLUMES

The following new books have been added to the Baldwin public library:

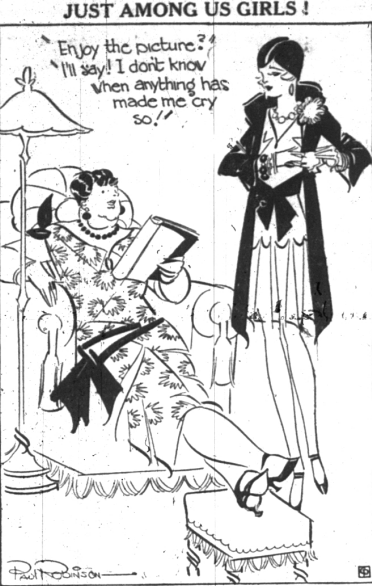
Misker, A. Son of Mother India; Answers; Spengler, The Decline of Civilization; Sheppard, The Implications of a Future; Ernst, What Shall I Be; Madden, Wills, Trusts and Estates; Stephens, Etched in Moonlight; Deschewitz, Growing Up; Sanger, What Every Boy and Girl Should Know; Thom, Everyday Problems of the Everyday Child; Fylenan, Latty; Hawkes, College—What's the Use?; Steele, Meat; Board, Safety First; Sedgwick, Childhood in Brittany; Graves, Lawrence and the Arabian Adventure; Michand, American Novel; To-day; Hughes, About England; Wilson, Solace the Men; Van Dine, The Murder Case; Halle, Which One?; Angell, The Campus; Irwin, Herbert Hoover; Gellomb, The Portrait Invisible; Overton, Who Writes Our Novels; Patton, Furniture; Cooley, Life and the Student; Laughlin, So You're Going to Rome; Poliakoff, The Trag-

ic Bride; Grey, "Nevada"; Byrne, Crusade; Chambers, The Sun Hawk; Lewis, Roman Gold.

### How to Achieve Beauty

By Mme. Helena Rubinstein

**Individuality in Hair Dressing**  
It is impossible to estimate the numberless types of beauty we have in the country. And yet each type should know herself; she should know all the fine points of grooming which skillfully draw into sharp relief that very individuality which makes for charm and personality. Your hair and your clothes can do wonders for you. And of the two perhaps the arrangement of your hair is the more important.  
Once a woman adopts a certain coiffure arrangement she is apt to stick to it for quite some time. That is why the appearance of so many of our elderly ladies suffer under the radical changes of the modern mode. When bobbing became universal many a woman felt that she sacrificed her individuality to the shears!  
Then came the shingle and the Eton crop and the wind blown bob and dozens of others, and with each of them, the arrangement



which was most attractive to one woman out of ten, made the other nine look like so many sheared sheep!

The new style says first, "Be yourself"—and second "Be attractive while you're about it." But—said here—Madame. Mode crosses her fingers and looks both wise and grave. There is no law which requires of all women— one style of headdress! The fashion-law prescribes instead, personality, individuality, contrast—and along that line—why, "everything goes," as one small boy says. Paris shakes her head in disapprobation of uniformity. Now for the styles themselves. One very pretty mode is for the shoulder bob. The hair is brushed back and allowed to fall in a natural frame around the face, and the ends for not more than two or three inches are curled in loose, soft ringlets. This is particularly lovely for the jeune fille type, an oval face and regular features.  
A very modish neadress for the chic woman, the type who looks "stunning," never just "pretty," is as follows: The hair part is twisted instead of being a straight line. It curves nearer to the center of the head in front and winds down toward the back. Large wide waves bring the hair closely to the head. Sides are swept back over the ears and the ends are turned under.  
The piquant type looks lovely with large soft ringlets all over the head, and she may wear a curling bang or not, which ever style is most becoming.  
Some types call for satin smooth hair. Whatever type you are you can play up to it perfectly and be correct.

### WE HEARD IT SAID BY—

Clarie H. Ogden, local attorney: "Young men starting out in the practice of law will do well to weigh carefully the compensations attendant upon the practice of law which they intend to take. Oakland County, for instance, has a splendid Bar Association; one of its traditions is that the older members of the bar always extend a helping hand to the younger ones. All they require is that an attorney practice as a gentleman, and he will receive many benefits from their experience. This tradition is not so true of the heavier centers of population, such as Wayne County."

### Kellygrams

Human Ants  
Sometimes when I watch a party of ordinary black ants proceeding excitedly about their chores, dashing here and there, and then retracing their steps in rattle-brained fashion, seemingly without any definite plan, I wonder if the average ant is not somewhat overestimated.  
Regardless of all the marvelous intelligence attributed to them by scientists, ants are quite likely to impress a thoughtful, unbiassed observer as being stupid beyond all necessity. They are industrious, as everybody concedes, energetic and thrifty, but are they truly efficient? Apparently they have a predisposition toward lost motion, and do a lot of running around to no purpose. They behave as creatures willing enough to be on the job, but lacking proper supervision from the main office.  
Yet, on the other hand, we may be doing the ant an injustice. Maybe they know exactly what they're about. If we go according to mere outward symptoms—movements to and fro and up and down on the earth—human beings seem scarcely more systematic or logical than ants.  
Balloons, aviators, and other persons in the habit of roaming the skies, often come to have almost a contempt for mere humans because of our foolish appearance of ant-like aimlessness when seen in the mass.  
Nevertheless, people do move about according to law and reason. An individual may not know why he is going in a certain direction, but some force directs his footsteps. The force may be the impetus of a crowd which shoves him along, or it may be simply habit—such as the habit of walking on the right side of the street.  
You see a crowd of people moving about a store, and at first glance nothing could be more ant-like, more dependent on human whim and chance, and less according to rule, than their movements.  
Yet it is possible to know not only where most of the crowd in a store will go, but, in a general way, at what time they will buy. Once you know where most of the people are going to walk, you can tell where in the store the effective spot to display things that one especially desires to sell. One may even lay off the floor space of a store into small sections and figure out—knowing where people will walk—the rental value of each section.

### 'LARGEST PATROLMAN' STARTED IN HILLS

Frank Gattie, formerly connected with the Star Motor Coach company of Birmingham, started as patrolman in Bloomfield Hills Monday. Gattie is the largest man on the force. He is six feet four inches tall and weighs 240 pounds. He will be assigned to night duty. Chief William Putnam said.

### Mlle. Mistinguet, a famous dancer of Paris, has insured her legs for \$1,000,000.

### MORE DRIVERS FINED HERE

Overladen Trucks Cause Arrests Near Birmingham; Speeders Nabbed

Continuing warfare against drivers who overload their trucks and drive on the highways of Oakland County, 11 men were fined by Justice Floyd S. Buck here Saturday following their arrest by Deputy Ray Higginbotham. The fines totaled \$160. Fifteen drivers were fined last week on the same charge.  
Paul K. Riemenschneider, 55 Lincoln avenue, Pontiac, paid a fine of \$10 in the court of Justice Floyd Buck Monday for speeding. The arrest was made by Patrolman George Townsend.  
Kenneth Dillenbeck, 1615 Austin avenue, Lincoln Park faced a charge of speeding in the court of Justice Buck Saturday. He paid a \$10 fine. Patrolman William Green made the arrest.  
"I've just been out of the army 10 days and this is the first time I've driven a car in a long while," was the remark Edwin Ogden, 72 Elm street, Pontiac made when brought before Justice Malcolm Hunt Monday on a charge of speeding. Ogden was released after paying a \$10 fine. The arrest was made by Patrolman Green.

### Factory Branch Opens in Village

The Silent Automatic Oil Burner corporation has opened a factory branch at 133 West Maple avenue, with F. W. Chamberlain, 65 Williams street, Pontiac, manager, according to announcement. The large number of sales in this village make the branch office necessary.  
Both the manager and staff of the Birmingham factory branch have been trained in the laboratory at the Silent Automatic factory, and are skilled oil heating engineers, the factory announcement states.

52 Issues of The Eccentric \$2.50

### Could You Cash Your Personal Check in Painted Post, N. D.?

DO YOU know of anyone who would identify you and certify your personal check so that a bank clerk in any one of the thousand small towns abroad or even in this country would cash it for you?  
This embarrassment need not be yours if you avail yourself of the use of American Express Travelers Cheques. Your own personal signature is your identification. You sign the cheques when you purchase them and countersign them in the presence of the person who is to accept them. Thus, you certify your own cheques. This simple procedure eliminates needless explanation to prove who you are.  
American Express Travelers Cheques can be purchased here in convenient denominations of \$10, \$20, \$50 and \$100. They are spendable everywhere.

### First National Bank

BIRMINGHAM, MICH.  
RESOURCES OVER \$3,300,000.00  
4% Paid on Savings

### Cabinet Work

Upholstering :: Repairing  
:: Refinishing ::  
Antique Finishing of All Kinds  
BROOKS UPHOLSTERY  
206 N. Woodward Phone 625-W

### HIRSCHFIELD BEAUTY SALON

1540 WASHINGTON BLVD. PHONE CA 8145  
6TH FLOOR WASHINGTON SQUARE BLDG. DETROIT

### HIRSCHFIELD PERMANENT WAVES

This COUPON WORTH \$2.50

Hirschfeld "Permanents" to suit each head and hair texture. Always sanitary. Use this coupon during April, and save \$2.50.

### A new kind of Service Station

A man asked us the other day what kind of paint he should put on his living room walls—and could he use the same paint on the woodwork and on the radiators.  
We told him. There are a lot of directions for avoiding certain expensive mistakes when you paint, and we're always glad to give them.  
For this store is something more than a paint store. It's a "paint service station." Maybe that's a new idea—but we think it is a good one.  
Come in and let us help you with your paint problems.

### DEVOE PAINT & ART SHOP

147 S. Woodward Theater Building  
PHONE 1645

### Going Strong SPECIAL SALE

of  
**A - B Gas Ranges**

A large special group of new models included in this sale. These are in three styles of finish . . . all white enamel . . . semi-white enamel . . . standard finish with white doors and splashers. Each range has service drawer and guaranteed rust-proof oven linings . . . invisible door hinges . . . smooth, boltless construction . . . all the newest improvements and refinements. The new designs are very attractive and are offered in two sizes . . . both of which have deep, roomy ovens and ample cooking tops.

### Our Gift to you — ABSOLUTELY FREE !

This beautiful 23-piece Luncheon Tea Set of Imported Chinaware. Finished in seven different varieties. This is our gift to you with every A-B CABINET GAS RANGE purchased during this sale.

Same Prices and Terms Prevail In Our Royal Oak, Rochester, Farmington and Pontiac Stores

### CONSUMERS POWER COMPANY

GAS OFFICE BIRMINGHAM, MICH.  
PHONE 533