

May is the time to buy a Buick

May is the month to buy your Buick.

The rich harmonies of Coronation colors in Duco, the graceful lines and splendid beauty of Fisher coachcraft symbolize the very spirit of spring.

And Buick's remarkable performance will thrill you. Speed along with the rush of the wind like a floating cloud over the crest of the hill.

The pleasantest part of the year's driving is ahead of you.

Buy your Buick Now!

WHEN BETTER AUTOMOBILES ARE BUILT, BUICK WILL BUILD THEM!

COST IS GIVEN ON STORM SEWER

Construction of a storm sewer on Francis avenue from Lot 113 to 115... This avenue will cost \$1,538, according to an estimate made by James W. Barry, village manager...

A special assessment for five-eighths of the amount will be levied on the property fronting and abutting on this section of the street. The village will stand on six-tenths of the amount...

The special assessment will be divided into five equal installments. Suggestions and objections to the proposed construction will be heard by the village commission at a special meeting May 31 at 8 p. m. in the village office. It was decided at the commission meet the Monday night. The motion of adjournment will also be discussed at this time.

STATE OF MICHIGAN, COUNTY OF OAKLAND.

CIRCUIT COURT COMMISSIONERS.

Not pending before Ralph T. Keeling, Circuit Court Commissioner for said County of Oakland, vs. Mrs. Meta Roman, Defendant.

Summons having been issued in this cause and return thereon filed in this court, the said defendant appears at the said court on the 23rd day of May, 1927, and defers the complaint filed in this case or judgment to be entered by default, and that this order be entered or published as required by statute.

This is an action to recover possession of lands held contrary to the conditions and covenants of an executory contract for the purchase thereof, and lands hereinafter described.

All that certain piece of parcel of land being situate in the Township of Farmington, Oakland County, Michigan, and more particularly as described in the undersigned, 202-213 First National Bank Bldg., Pontiac, Michigan, situate in the Eastern Eastern Standard Time, and defers the complaint filed in this case or judgment to be entered by default, and that this order be entered or published as required by statute.

STATE OF MICHIGAN, COUNTY OF OAKLAND.

CIRCUIT COURT COMMISSIONERS.

Not pending before Ralph T. Keeling, Circuit Court Commissioner for said County of Oakland, vs. Mrs. Meta Roman, Defendant.

Summons having been issued in this cause and return thereon filed in this court, the said defendant appears at the said court on the 23rd day of May, 1927, and defers the complaint filed in this case or judgment to be entered by default, and that this order be entered or published as required by statute.

STATE OF MICHIGAN, COUNTY OF OAKLAND.

CIRCUIT COURT COMMISSIONERS.

Not pending before Ralph T. Keeling, Circuit Court Commissioner for said County of Oakland, vs. Mrs. Meta Roman, Defendant.

Summons having been issued in this cause and return thereon filed in this court, the said defendant appears at the said court on the 23rd day of May, 1927, and defers the complaint filed in this case or judgment to be entered by default, and that this order be entered or published as required by statute.

STATE OF MICHIGAN, COUNTY OF OAKLAND.

CIRCUIT COURT COMMISSIONERS.

Not pending before Ralph T. Keeling, Circuit Court Commissioner for said County of Oakland, vs. Mrs. Meta Roman, Defendant.

Summons having been issued in this cause and return thereon filed in this court, the said defendant appears at the said court on the 23rd day of May, 1927, and defers the complaint filed in this case or judgment to be entered by default, and that this order be entered or published as required by statute.

STATE OF MICHIGAN, COUNTY OF OAKLAND.

CIRCUIT COURT COMMISSIONERS.

Not pending before Ralph T. Keeling, Circuit Court Commissioner for said County of Oakland, vs. Mrs. Meta Roman, Defendant.

Summons having been issued in this cause and return thereon filed in this court, the said defendant appears at the said court on the 23rd day of May, 1927, and defers the complaint filed in this case or judgment to be entered by default, and that this order be entered or published as required by statute.

STATE OF MICHIGAN, COUNTY OF OAKLAND.

CIRCUIT COURT COMMISSIONERS.

Not pending before Ralph T. Keeling, Circuit Court Commissioner for said County of Oakland, vs. Mrs. Meta Roman, Defendant.

Summons having been issued in this cause and return thereon filed in this court, the said defendant appears at the said court on the 23rd day of May, 1927, and defers the complaint filed in this case or judgment to be entered by default, and that this order be entered or published as required by statute.

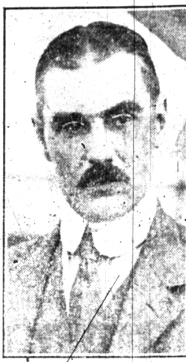
STATE OF MICHIGAN, COUNTY OF OAKLAND.

CIRCUIT COURT COMMISSIONERS.

Not pending before Ralph T. Keeling, Circuit Court Commissioner for said County of Oakland, vs. Mrs. Meta Roman, Defendant.

Summons having been issued in this cause and return thereon filed in this court, the said defendant appears at the said court on the 23rd day of May, 1927, and defers the complaint filed in this case or judgment to be entered by default, and that this order be entered or published as required by statute.

Stated for Turkey



Joseph Clark Grew, Under Secretary of State, who is expected to go to Turkey as ambassador, a post which has not had an incumbent for ten years.

NOTICE OF LETTING OF DRAIN CONTRACT—AFFORDEMENT OF BLOODFIELD VILLAGE NO. 2 STORM SEWER DRAIN.

NOTICE IS HEREBY GIVEN, THAT I, A. W. Spencer, Circuit Drain Commissioner for the County of Oakland, State of Michigan, will, on the second day of June, A. D. 1927, at one o'clock in the afternoon, receive sealed bids for the construction of a certain Drain System and designated as the Bloodfield Village No. 2 Storm Sewer Drain located in the Township of Bloomfield and County of Oakland, Michigan, at the N. E. corner of Shawnee Drive and Quailton Road in S. E. 1, Sec. 22, Bloomfield Township, Oakland County, Michigan.

Said drain is all one section having an average depth of 42 1/2 feet. All stations are 700 feet apart.

The construction of said drain the following quantities and character of work: 520 ft. 42 inch Sewer Pipe; 114 ft. 36 inch Sewer Pipe; 516 ft. 36 inch Sewer Pipe; 274 ft. 24 inch Sewer Pipe; 274 ft. 24 inch Sewer Pipe; 15 ft. 24 inch Sewer Pipe; 15 ft. 24 inch Sewer Pipe; 10 ft. 24 inch S. P. Leads; 10 ft. 24 inch S. P. Leads; 10 ft. 24 inch S. P. Leads; 10 ft. 24 inch S. P. Leads.

Said job will be let in accordance with the drawings, plans and specifications on file in the office of the County of Oakland, to which reference may be had by all parties interested, and which bid must be accompanied by a certified check of ten per cent of the amount of said drain, to be paid to the Oakland County Drain Commissioner, each check to be forfeited to the Bloodfield Village No. 2 Storm Sewer Drain District in case bid is accepted by the Drain Commissioner and holder fails to file required bond and enter into contract within ten days of acceptance by the Drain Commissioner.

Contract will be made with the lowest responsible bidder who shall be held liable for the performance of the work in the sum there and there to be fixed by me, reserving to myself the right to reject any or all bids for the construction of said drain.

STATE OF MICHIGAN, COUNTY OF OAKLAND.

CIRCUIT COURT COMMISSIONERS.

Not pending before Ralph T. Keeling, Circuit Court Commissioner for said County of Oakland, vs. Mrs. Meta Roman, Defendant.

Summons having been issued in this cause and return thereon filed in this court, the said defendant appears at the said court on the 23rd day of May, 1927, and defers the complaint filed in this case or judgment to be entered by default, and that this order be entered or published as required by statute.

STATE OF MICHIGAN, COUNTY OF OAKLAND.

CIRCUIT COURT COMMISSIONERS.

Not pending before Ralph T. Keeling, Circuit Court Commissioner for said County of Oakland, vs. Mrs. Meta Roman, Defendant.

Summons having been issued in this cause and return thereon filed in this court, the said defendant appears at the said court on the 23rd day of May, 1927, and defers the complaint filed in this case or judgment to be entered by default, and that this order be entered or published as required by statute.

STATE OF MICHIGAN, COUNTY OF OAKLAND.

CIRCUIT COURT COMMISSIONERS.

Not pending before Ralph T. Keeling, Circuit Court Commissioner for said County of Oakland, vs. Mrs. Meta Roman, Defendant.

Summons having been issued in this cause and return thereon filed in this court, the said defendant appears at the said court on the 23rd day of May, 1927, and defers the complaint filed in this case or judgment to be entered by default, and that this order be entered or published as required by statute.

STATE OF MICHIGAN, COUNTY OF OAKLAND.

CIRCUIT COURT COMMISSIONERS.

Not pending before Ralph T. Keeling, Circuit Court Commissioner for said County of Oakland, vs. Mrs. Meta Roman, Defendant.

Summons having been issued in this cause and return thereon filed in this court, the said defendant appears at the said court on the 23rd day of May, 1927, and defers the complaint filed in this case or judgment to be entered by default, and that this order be entered or published as required by statute.

STATE OF MICHIGAN, COUNTY OF OAKLAND.

CIRCUIT COURT COMMISSIONERS.

Not pending before Ralph T. Keeling, Circuit Court Commissioner for said County of Oakland, vs. Mrs. Meta Roman, Defendant.

Summons having been issued in this cause and return thereon filed in this court, the said defendant appears at the said court on the 23rd day of May, 1927, and defers the complaint filed in this case or judgment to be entered by default, and that this order be entered or published as required by statute.

FIRE TO COMBAT CORN BORER

East Lansing, May 25.—Liquid fire is now being employed to "roast" the borer in its hiding places. Sixteen burning units have commenced operations in the heavily infested areas, according to C. O. Larrabee, supervisor of control work in the state.

Each burning unit consists of a fuel tank mounted on a truck and a pump which forces fuel oil through long lengths of hose to a burner. The burner has a series of jets and a reflector which turns down the flame. It is mounted on two wheels and is drawn across corn fields by two men. A heat of 1400 degrees Fahrenheit is developed, which is sufficient to cook the borer right in the stalks.

STATE OF MICHIGAN, COUNTY OF OAKLAND.

CIRCUIT COURT COMMISSIONERS.

Not pending before Ralph T. Keeling, Circuit Court Commissioner for said County of Oakland, vs. Mrs. Meta Roman, Defendant.

Summons having been issued in this cause and return thereon filed in this court, the said defendant appears at the said court on the 23rd day of May, 1927, and defers the complaint filed in this case or judgment to be entered by default, and that this order be entered or published as required by statute.

STATE OF MICHIGAN, COUNTY OF OAKLAND.

CIRCUIT COURT COMMISSIONERS.

Not pending before Ralph T. Keeling, Circuit Court Commissioner for said County of Oakland, vs. Mrs. Meta Roman, Defendant.

Summons having been issued in this cause and return thereon filed in this court, the said defendant appears at the said court on the 23rd day of May, 1927, and defers the complaint filed in this case or judgment to be entered by default, and that this order be entered or published as required by statute.

STATE OF MICHIGAN, COUNTY OF OAKLAND.

CIRCUIT COURT COMMISSIONERS.

Not pending before Ralph T. Keeling, Circuit Court Commissioner for said County of Oakland, vs. Mrs. Meta Roman, Defendant.

Summons having been issued in this cause and return thereon filed in this court, the said defendant appears at the said court on the 23rd day of May, 1927, and defers the complaint filed in this case or judgment to be entered by default, and that this order be entered or published as required by statute.

STATE OF MICHIGAN, COUNTY OF OAKLAND.

CIRCUIT COURT COMMISSIONERS.

Not pending before Ralph T. Keeling, Circuit Court Commissioner for said County of Oakland, vs. Mrs. Meta Roman, Defendant.

Summons having been issued in this cause and return thereon filed in this court, the said defendant appears at the said court on the 23rd day of May, 1927, and defers the complaint filed in this case or judgment to be entered by default, and that this order be entered or published as required by statute.

STATE OF MICHIGAN, COUNTY OF OAKLAND.

CIRCUIT COURT COMMISSIONERS.

Not pending before Ralph T. Keeling, Circuit Court Commissioner for said County of Oakland, vs. Mrs. Meta Roman, Defendant.

Summons having been issued in this cause and return thereon filed in this court, the said defendant appears at the said court on the 23rd day of May, 1927, and defers the complaint filed in this case or judgment to be entered by default, and that this order be entered or published as required by statute.

STATE OF MICHIGAN, COUNTY OF OAKLAND.

CIRCUIT COURT COMMISSIONERS.

Not pending before Ralph T. Keeling, Circuit Court Commissioner for said County of Oakland, vs. Mrs. Meta Roman, Defendant.

Summons having been issued in this cause and return thereon filed in this court, the said defendant appears at the said court on the 23rd day of May, 1927, and defers the complaint filed in this case or judgment to be entered by default, and that this order be entered or published as required by statute.

STATE OF MICHIGAN, COUNTY OF OAKLAND.

CIRCUIT COURT COMMISSIONERS.

Not pending before Ralph T. Keeling, Circuit Court Commissioner for said County of Oakland, vs. Mrs. Meta Roman, Defendant.

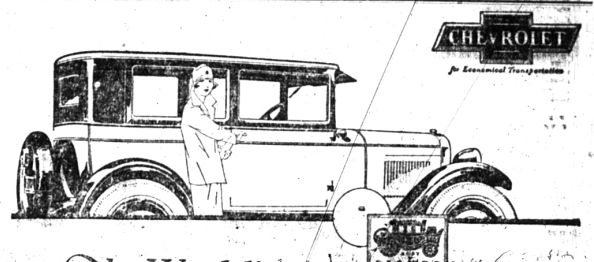
Summons having been issued in this cause and return thereon filed in this court, the said defendant appears at the said court on the 23rd day of May, 1927, and defers the complaint filed in this case or judgment to be entered by default, and that this order be entered or published as required by statute.

STATE OF MICHIGAN, COUNTY OF OAKLAND.

CIRCUIT COURT COMMISSIONERS.

Not pending before Ralph T. Keeling, Circuit Court Commissioner for said County of Oakland, vs. Mrs. Meta Roman, Defendant.

Summons having been issued in this cause and return thereon filed in this court, the said defendant appears at the said court on the 23rd day of May, 1927, and defers the complaint filed in this case or judgment to be entered by default, and that this order be entered or published as required by statute.



The World's Lowest Priced Cars with Supremely Beautiful FISHER BODIES!

Chevrolet is the only car in its price class offering bodies by Fisher—built up only Fisher can build, and styled as low-priced cars were never styled before!

Bodies by Fisher are everywhere acknowledged to represent the highest order of beauty, luxury, and safety—and never was the superiority of Fisher craftsmanship more evident than in the Most Beautiful Chevrolet.

Despite the lowness of Chevrolet prices, there is not the slightest compromise in design, construction or finish. All embody exactly the principles employed on the highest priced cars—a composite

construction of selected hardwood and steel. All are finished in beautiful colors of lustrous, lasting Duco. Enhancing the beauty of the bodies themselves are numerous features of distinction previously considered exclusive to the costliest cars—features typified by heavy full-crown, one-piece fenders and bullet-type headlamps.

Only the economies of Chevrolet's great volume production make possible such quality at Chevrolet prices—value so outstanding that comparisons cease to exist. Ask for a demonstration!

Tracy & Cotton, Inc. Open Nights and Sundays Woodward at Ruffner Birmingham, Mich.

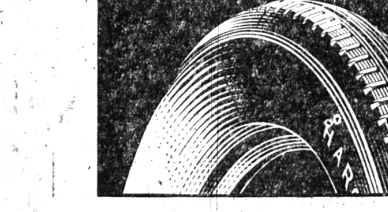
QUALITY AT LOW COST

Williams Buick Sales

602 S. Woodward—Phone 1200

Open DAY and NIGHT INCLUDING SUNDAY

CAR WASHING and POLISHING REPAIRING and GENUINE BUICK PARTS



SETTLE the tire problem once for all by bringing us your present tires and getting a cash allowance for them on new guaranteed Hargreaves Balloons. Or specify them for your new car. They will out-wear any tire we know of, and give you more real tire comfort and safety in the bargain.

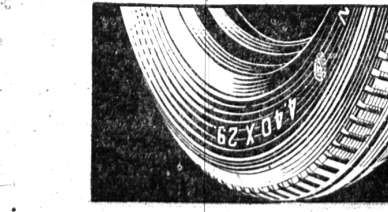
HARGREAVES

EXTRA PLY

BALANCED BALLOONS

BIRMINGHAM STORE (Evans-Legg Motor Co.) 119 So.—Woodward John E. Elder, Mgr. Phone 301

Expert Repair Service on all Makes of Tires



YOUNG BROS. 105 W. Ruffner Phone 1490

EQUIPPED TO HANDLE ALL YOUR

Painting Paperhanging Decorating PROBLEMS AND JOBS!

Attention!!

Dodge and Reo Owners

We are an

Authorized Service Station

Carrying a Complete Service Stock for the Northeast Electrical Equipment on your car. Our shop is equipped to solve your Electrical problems. : : :

Birmingham Battery Service

125 East Maple Phone 902