

# Of INTEREST TO MOTORISTS

## OAKLAND CONQUERS ROUGH MULE TRAIL

Daring Girl Only Person To Perform Record-Breaking Feat In Colorado.

Nerve, backbone, daring, have usually been regarded the traditional heritage of man. That may be so, or it may be that women, through the ages, have seldom had the opportunity to learn whether they possessed these qualities. Certainly in the last decade women, through their many daring exploits in industrial occupations, sports, have challenged that theory.

Miss Billy Twist of Tulsa, Okla., has recently challenged this idea with her several days that she was

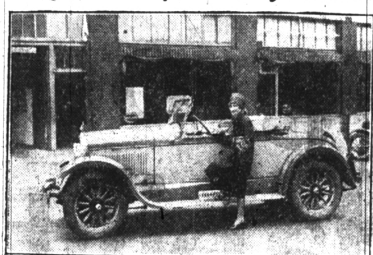
a thrill all her own when she started natives of Colorado by driving her Oakland Six Sport Roadster down the precipitous mule trail to the bottom of Box Canyon, a popular scenic spot near Manitou. According to old settlers, this car was the only one ever seen on the floor of Box Canyon.

### Requiring Half Day

The drive down the tortuous, twisting mule trail, a route used by tourists and thrill seekers on mule-back, required half a day. The return was even more difficult, but the descent, Miss Twist says.

"I was surprised when I was told that many of the mountain guides said that my car was the first one ever seen at the bottom," she said. "I then I didn't know recently challenged this idea with her several days that she was

## Oakland Conquers Canyon Trail



Sturdy roadster enables Miss Billy Twist, daring Western girl, to perform unusual driving feat.

only person who ever made the drive. Others had attempted, they told me, but gave it up before they reached half way."

"The drive was dangerous in spots, the Tulsa girl admits, but said she was not afraid because her brother, Ed Twist, at 7 of Tulsa, and a boy friend from Ada accompanied her.

"They spent most of their time building bridges and removing mud boulders," she explained, "and I suppose my car has as much ground clearance as any other, but the rocks at times were so big it was impossible to go over them."

"There had been a rain a few days before we made the descent and deep ditches were washed out along the narrow trail. Some times, when the small stream bed ran at right angles to the trail, it was necessary to construct temporary bridges."

"The boys did the work. They threw some logs or old branches across and then we drove slowly. In fact, they were working most of the time, either moving rocks or brush or building a make-shift bridge."

"The actual distance from the rim of the canyon to the floor is estimated at 2,500 feet. At times the rim of the trail was only three inches from the side of the trees and the driver continually hugged the canyon wall," she says. "Practically all the drive was made in low gear because of the rough and pitted trail."

Taking into consideration the winding trail, Miss Twist believes her car traveled eight or nine miles in the round trip. She did

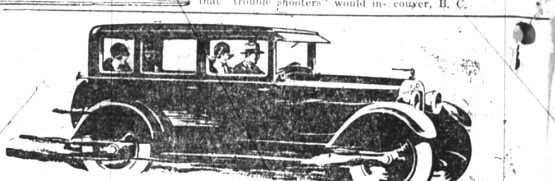
## Standard Shift For Dodge Cars

Outstanding among the changes recently announced in Dodge Brothers entire line of passenger cars is the adoption of a standard shift, more compact transmission with the gears arranged for standard shift. The new gear shift, according to the announcement from the factory received by C. R. Evans, of the Evans-Legg company, local dealers, entered production at the same time as the new Dodge Brothers motor which has been featured in the company's recent newspaper, magazine and poster-board advertising and which has been the subject of much widespread comment throughout the automobile industry.

"The aim of the designer," says Mr. Evans, "was to provide a gear shift so sturdy that although transmitting the increased power developed by the new engine it would sustain the good reputation carried by the former transmission for long life and freedom from wear. Another feature of the new transmission is ease and quietness of shifting. This reduces the amount of effort required to operate the car under modern traffic conditions and thus increases the pleasure of driving."

"The gears are heavier and stronger than those of the former transmission and are made of electrically heated furnace, the temperature of which is accurately, automatically controlled within close limit. This insures maximum endurance to resist shock and hardening of wear."

"Both of the shafts which support the gears have been made stronger and stiffer than those in the former transmission and are also of chrome vanadium steel. The new splined shaft is considerably shorter than the old, but six splines instead of four and is now 1.38 inches in diameter. The forward end is supported by a roller pilot bearing instead of a plain bushing formerly used."



## 50 miles an hour all day long

The symbol of the fleet homing pigeon applies to the Essex Super-Six, not only in its ability to travel at high speed with economy of effort all day long, but in its smooth road skimming ease that is actually like flying.

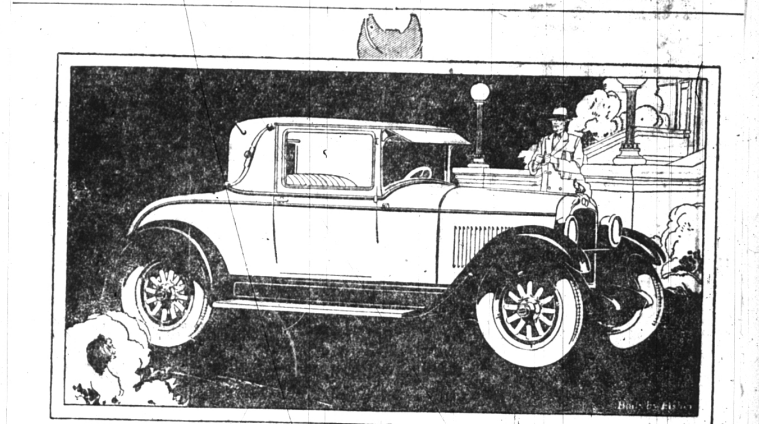
Increasing thousands of owners, and increasing thousands of miles are proving that these qualities which delight you on your first ride are just as lasting as they are brilliant.



ESSEX SUPER-SIX 2-pass. Speedabout, \$790; 4-pass. Speedster, \$835; Coach, \$735; Coupe, \$735; Sedan, \$775. All prices f.o.b. Detroit, plus war excise tax.

## ESSEX Super-Six

Boughner Bros. Garage  
134 S. Woodward Ave. Birmingham



## Now an even greater car scoring an even greater success

You know how all the resources of General Motors were used to make the original Pontiac Six the finest car ever introduced into the field of low-priced sixes. You know the wildfire success that resulted.

But do you know that the present day Pontiac—at its new low prices, is a new and finer six—an even greater car that is scoring an even greater success?

It offers the added appeal of new Fisher bodies—longer, lower, roomier and finished in new and striking combinations of enduring Duco.

It embodies important mechanical refinements—tilting-beam headlights with foot control, new transmission and brake levers, oil-tight universal joints and a clutch even smoother in action.

It provides in full measure those basic Pontiac qualities that took all America by storm—those qualities of stamina, economy and long life which were developed by over three years' testing on the great General Motors Proving Ground!

Small wonder that the tide of public preference is turning to the Pontiac Six—as never before to another six in the low-priced field!

## Shaw Motor Sales

118 E. MAPLE AVE. PHONE 1160 BIRMINGHAM

## The New and Finer PONTIAC SIX

## REASON ENOUGH

When we sell a man a used car we are naturally hoping that some day he will come back and buy a new car. Honesty aside, that alone seems reason enough for selling him a GOOD Used Car at a fair price.

EVANS-LEGG MOTOR CO.  
119 South Woodward Ave. Phone 301  
Birmingham, Mich.

A USED CAR IS ONLY AS DEFENDABLE AS THE DEALER WHO SELLS IT

## Only 3c a Day

Yes, sir, only 1/3 of a cigar per day will make you a member of the

## OAKLAND COUNTY AUTO CLUB!

Emergency Road Service—ANYWHERE  
Touring Information, Logs and Maps  
Change of Tires for the Wife  
Old Line, Dependable Auto Insurance  
"LET US EXPLAIN IT TO YOU"

McCORMICK & SHUART  
Life - Fire - Auto Insurance  
105 S. WOODWARD AVE., BIRMINGHAM  
Phone 1130



## because of Dependability, Fine Appearance and Economy—now the world's most Popular Gear-Shift Truck!

In every section of the country Chevrolet Truck sales are breaking all previous records—establishing Chevrolet as the world's most popular gear-shift commercial car.

This decisive preference for Chevrolet is based on a matchless combination of dependability, economy and fine appearance—plus the public's confidence in product of General Motors.

Chevrolet dependability under every condition of use has long been traditional; yet recent improvements in the powerful Chevrolet valve-in-head motor—improvements typified by new AC air cleaner and AC oil filter—have made Chevrolet Trucks even more dependable, with even longer life, greater operating economy and more satisfactory performance.

With a cab enclosure that matches passenger car design in comfort and beauty—with sweeping crown fenders and bullet-type headlamps—the Chevrolet Truck is one of the handsomest haulage units seen on the highways.

If you use trucks in your business—come in. Learn for yourself why Chevrolet performance has proved so satisfactory for every type of user—from the single truck operator to the largest fleet owner!

## Government Uses Olds Auto Process

The features that have made chromium plating attractive to motorists since introduced on Oldsmobile radiator shells during the past year are being put to work by the United States government in manufacturing money at lower cost. This ultrahard plating is now being used to improve the protective surface of the plates from which our paper is printed. Its use has resulted in a substantial saving to the government.

Until recently the currency printing plates were made by rolling the design into a soft steel plate which was then case-hardened. These yielded from 20,000 to 70,000 impressions before the fine lines of the plate were spoiled by the abrasive particles of the heavy pressure used in printing.

## TRUCKING OF ALL KINDS

Ashes Collected  
Tin Cans Removed

Norman L. Shovan  
316 Lincoln Ave.  
BIRMINGHAM  
Phone 1480-W