

Of INTEREST TO MOTORISTS

NEW \$10,000,000 FACTORY OPENED

Production Is Started in Plant, Devoted To Building Of Pontiac

Production started last week in the new \$10,000,000 plant of the Oakland Motor Car Company that will be devoted exclusively to building Pontiac Six motor cars, when the first car rolled off the assembly line which extends a quarter of a mile in length. The second assembly line is practically completed and will be in operation just as soon as the first line has been speeded up to capacity.

The event was made a gala occasion by the attendance of practically all the officials of the company. It represented the culmination of a year and a half of planning and building and is the opening of the first unit of a factory that has been heralded as one of the largest and most modern motor car factories in the country.

The new factory is being built up for a production of 750 cars daily for the present. The plant will have an ultimate maximum capacity of 1000 cars a day. Expansion will be made as quickly as possible due to the tremendous demand for the new Pontiac Six cars which were announced about a month ago. Each of the two assembly lines will shortly have a production output of 25 cars an hour.

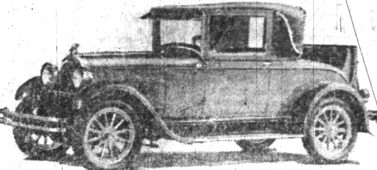
The fruits of the \$15,000,000 Oakland company expansion program are beginning to be seen in a larger output which has just been started. The March production of Oakland and Pontiac Sixes will be only slightly under the largest single production month ever recorded by the Oakland Motor Car Company, while the April production schedule of 10,000 Oakland and Pontiac cars, will equal all previous monthly production records.

The beginning of operations in the new Pontiac factory also will provide facilities for a greater production schedule of Oakland cars in the original Oakland plant. A recent appropriation of \$1,500,000 will be used entirely for new Oakland machinery and equipment which will insure a capacity of 300 Oakland Sixes per day.

The first three cars off the line in the new factory were Pontiac Sedans. Bell Brothers, Philadelphia, have the distinction of receiving the first car off the new line.

Company officials and executives of the sales, engineering and production departments attended the ceremonies, including the following: A. J. Grand, vice president in charge of operations; W. R. Tracy, vice president in charge of sales; R. H. Arnold, vice president in charge of engineering; L. A. Blackburn, works manager; B. E. Roll, factory manager of the Pontiac division.

New Car in Pontiac Line



Sport Cabriolet one of two new body styles introduced in new Pontiac Six Line.

position. If clamps are turned in a reverse position, the tendency will be to open the clamps as they strike the ground, which is after the cause of losing a chain.

Squeaky Wheels
Squeaky wheels are often caused by the drying out of the wooden spokes. If a few drops of kerosene are allowed to work into the spoke joints, it will tighten the spokes.

Corroded Fuses
Electrical connections will sometimes corrode. Don't blame it if the lights go on and off. See if the fuse is corroded.

To Clean the Glass
Try dipping a clean cloth in kerosene and rubbing lightly over the windshield and windows, then pulling with a dry cloth.

Adjusting Tire Chairs
Drape the chain over the wheel with the clamps to the rear, so that when the chains strike the road, they strike with a "closing" motion.

Chevrolet Sales Best in History

An optimistic note on the spring business outlook for the automobile industry, discounting the "saturation point" bogaboo and pointing out favorable conditions throughout the country, is sounded in a statement just issued by William S. Knudsen, President and General manager of the Chevrolet Motor Company.

"The forecasting of a continuance of good business prospects for the Spring months, I am perhaps influenced by the aspect of our own sales which have never been better in the history of the company," said Mr. Knudsen.

"An encouraging steady growth in automobile production during this period, statistics issued by the United States Department of Commerce for the last three years covering the six months from January 1 to June 30 are interesting. The figures for these years follow:

1924	2,054,561
1925	2,412,722
1926	2,450,730

"With the figures showing business on the upward, generally, there are only two reasons which could be advanced for a possible decline in sales during the so-called saturation point—and second, a general decline in business production a respective tendency in buying."

"No one has ever been able to advance any reasonable formula for figuring the "saturation point." The "two or more" car trend is so pronounced that former theories are being constantly upset. If we knew the total area which would be occupied if all cars produced were running within that area, making it impossible for this space to accommodate any more cars, some basis would be available for figuring "saturation." But such a situation is impossible—and may leave the "saturation point" for the future to determine, inasmuch as the human mind will find it possible to open up any amount of traffic congestion which might develop."

"As for the general trend in business, country-wide statistics show the usual spring activity is opening up twenty days ahead of schedule. With the winter fairly mild, marked only by scarcity at spots, rapid acceleration of municipal and private construction operations is indicated. Favorable should start early due to the good weather and manufacturing operations generally are in excellent condition."

"Rapid turnover at smaller profits is being thought in industry as reflected by our country's business. With this policy can only come a demand for more transportation."

"The shippers are demanding better freight service; the business traveler is demanding better train service and the automobile user is demanding better service of his car, and the result is in a position to assure the buyer this better service can have nothing but bright prospects for the spring of 1927."

How to Make a Practical Oil Funnel
Select a round quart bottle of clear glass. Saturate a piece of cord in kerosene or turpentine, tie tightly around the bottle about one inch from bottom and ignite the cord. As the flame dies out, tap the bottom of the bottle sharply. The bottom will break off where the cord was tied. Result is a practical funnel for pouring oil into the breather pipe.

Grease the Headlight Rims
Quite often a headlight lens is broken, or a cold chisel and hammer become necessary to remove

More Quality than the Price Buys Elsewhere



The more experienced you are as a motor car owner, the better you will like Buick. Powered by an engine vibrationless beyond belief, this car's performance will win your heart. And Buick value will amaze you—Value made possible by great volume and its savings—the earnings of leadership, which are used continually to further enrich Buick quality.

WHEN BETTER AUTOMOBILES ARE BUILT, BUICK WILL BUILD THEM

Williams Buick Sales
602 S. Woodward—Phone 1200

Open DAY and NIGHT INCLUDING SUNDAY

CAR WASHING and POLISHING REPAIRING and GENUINE BUICK PARTS

Tell Your Merchant You Saw His Advertisement in THE ECCENTRIC

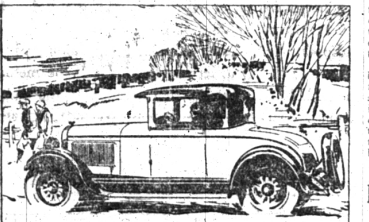
America's closest-priced six rivals the highest-priced in quality and performance

THERE'S a get-up-and-go about Hupmobile Six performance that appeals to you at once as entirely out of the ordinary.

And the more you try to find its parallel among ordinary sixes under \$1750, the more surely you realize this Six is unique in its price-class—in fact, has no rival anywhere save among the highest-priced sixes on the market.

Perfectly logical, when you consider that Hupmobile has made this the closest-priced Six in the industry by actually adding a full 10 per cent extra quality without adding a cent to its purchase price.

Come see the new Hupmobile Six. Drive it! Experience the performance thrills of the most expensive type of six-cylinder motoring which it assures you at a very substantial saving.



- Every Worth-While Feature The Modern Car Should Have**
- Clear-Vision Bodies—Color Options—Mohair Upholstery—Contrasting Window "Reveals" on Closed Bodies
 - Instrument Panel Under Glass, Indirectly Lighted—Solid Walnut Steering Wheel—Tilting Beam Headlights—Headlight Control on Steering Wheel—Both Manifold and Thermostatic Heat Control—
 - Gasoline Filter—Oil Filter—4-Wheel Brakes—Ballroom Tires.
- Brougham five-passenger, two-door, \$1385. Sedan, five-passenger, four-door, \$1385. Coupe, (illustrated), two-passenger, with rumble seat, \$1385. Roadster, with rumble seat, \$1325. Touring, five-passenger, \$1325. All prices f.o.b. Detroit, plus revenue tax.

Hupmobile Six

RAMSEY & SHAW, Inc.
113 Brownell Street
BIRMINGHAM
PHONE 550

Ramsey & Shaw, Inc.
Hupmobile Dealers
Automobile Repairing
Special Flat Rate Prices
OAKLAND - PONTIAC - BUICK
CALL 550
113 Brownell Street

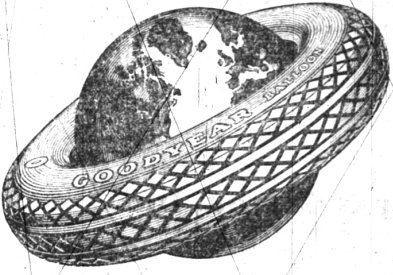
Only 3c a Day

Yes, sir, only 1/3 of a cigar per day will make you a member of the **OAKLAND COUNTY AUTO CLUB!**

Emergency Road Service—ANYWHERE
Touring Information, Logs and Maps
Change of Tires for the Wife
Old Life, Dependable Auto Insurance
"LET US EXPLAIN IT TO YOU!"

MCCORMICK & SHUART
Life - Fire - Auto Insurance
103 S. WOODWARD AVE., BIRMINGHAM
Phone 1130

Here Comes Spring!



—and more chances of tire trouble

BUT you can minimize the chances by having Goodyear Balloons with the NEW TYPE—ALL-WEATHER TREAD

TODAY, Goodyear Owners drive in a frame of mental ease and security. The Goodyear tired car that responds to the light touch on the steering wheel will carry them over the easiest roads and over the hardest roads with nary a bit of trouble. Motorists will not be forced to suffer the embarrassment of "there goes another tire" while hurrying to an anticipated haven of "Good Fishing" and "back to nature" life.

Honestly—you ought to see for yourself the real wear and dependability that Goodyear builds into its tires and particularly in the NEW TYPE—ALL WEATHER TREAD BALLOON—scientifically built and tried for two years by the Goodyear Laboratories.

F. E. STERNAL
Woodward and Daines
PHONE 9 FOR ROAD SERVICE 8-Hour Recharging Service

PRESTOLITE SALES AND SERVICE STATION