

GOOD PRINTING DONE QUICKLY AT A REASONABLE PRICE—THAT'S THE BIRMINGHAM ECCENTRIC "YOUR PRINTERS" Telephone 11 or 12

FORTY-NINTH YEAR—NO. 48

POLICE UPKEEP TOTALS \$177,432

Manager's Annual Report Shows Volume Of Work Done

A total of \$17,432 was spent to maintain the police force during 1926, according to the report of Village Manager Harry Starr. This included \$13,228.38 for the salaries of officers, \$2,972.27 for supplies and maintenance, \$81.19 for a new motor, \$266.33 for motorcycle upkeep and operation and \$66.15 for the traffic signal at Maple and Woodward avenues. Police court fines brought in \$46,088.54, and miscellaneous income \$125.55, leaving a net operating cost of \$11,718.19.

Chief James Anderson recommends the hiring of three more men for the night force and the addition of several call boxes throughout the village. The latter would enable the police to get to the streets to keep in touch with the office and aid greatly in cases of emergency. "Under the present system it is almost impossible to get into immediate touch with those doing patrol duty no matter in what need the office may be of them. The expense of installing the boxes would be slight as compared with their worth to Birmingham," the chief said.

Total of 1476 arrests was made during 1926, a large part of which were either for violating the traffic signal of speeding. In his duties as Inspector of weights and measures, Chief Anderson checked 20 gasoline pumps, 54 store scales, 3 coal scales and 18 loads of coal, which were stopped and weighed, the report states.

WILL OF MRS. EVANS TO BE HELD IN TRUST

Five Children To Share \$100,000 Estate Left By Birmingham Woman

Most of the estate, estimated at \$100,000, left by the late Mrs. Edna R. Evans, will be held in trust for her five children, Jane, 13; Charles, 12; Richard, 10; James, 7; and Donald, 4, until they are 25 years of age, according to the provisions of her will. The income is to be spent for the education of the children. The amount will be divided equally among them. Gifts of \$1,000 each were made to each of the children and Mrs. Evans' personal effects in the home she left to her oldest daughter, Jane. Mrs. Evans died last month in North Carolina, where she had come to recuperate from a severe cold. She was the wife of C. R. Evans, of the Evans-Logge automobile company.

Largest Variety of Properties

- Birmingham District
Pontiac District
Bloomfield Hills
Southfield hills
Oakland County
Lapeer County
Northern Michigan
Lakes, Streams, Resort, Hunting

BUY WITH CONFIDENCE
Wash, James & Wasey Co.

Realtors OFFICES AT DETROIT - BIRMINGHAM BLOOMFIELD HILLS - ROCHESTER Main Office, Penobscot Bldg., Detroit

Birmingham Eccentric

"For a Bigger and Better Birmingham"

BIRMINGHAM, OAKLAND COUNTY, MICHIGAN THURSDAY, MARCH 17, 1927

\$1.50 PER YEAR—SINGLE COPIES 5c

PART FOUR
OAKLAND COUNTY'S GREATEST WEEKLY NEWSPAPER

HOOFFERS

An Autobiographical Novel By Pathos Petoskey

Synopsis: A band of robbers set upon a fire one night, and one of them said, "Pedro, tell us a story, and on he began. 'I was happy, happily, generally happy for many years. I enjoyed a pointer, I took as few hours known. Sometimes I was second favorite, but usually I was the favorite. I was sought after, I suppose I was slightly spoiled. That is why my downfall came as such a blow. First came the hoodlum that took my sovereignty from me. Now I am a bridge. Think how you feel, I read in the deck, you should feel to the state of just a bit of a nut.'"

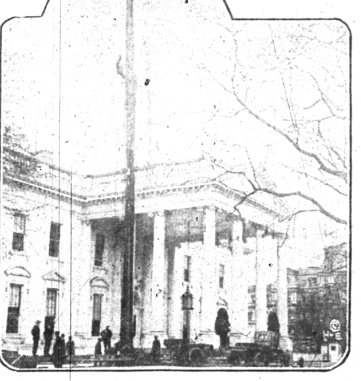
NO GO ON WITH THE STORY

Chapter 15 Finding himself deposited on a none too soft sidewalk, Pathos gazed upwards, downwards and sideways, and then, after the manner of tourists the world over, he said aloud, "So this is Birmingham." No one appeared to dispute him, although he was standing in front of the Birmingham Public Library, not to mention the Birmingham fire department and the Birmingham police station. Pathos noticed the police station, thought of entering and applying for a position as head of the detective bureau (for you remember, boys and girls, that our Pathos had decided last week on a career of detecting), but decided against it. "I'll become acquainted with the police soon enough," he said. "I always do. There's no use wasting the energy to walk in there and complain all the way, when I know that within a very short time I shall be dragged in. I might even be carried in. Those fellows look pretty husky."

And so he proceeded northwards. For he started northwards from Detroit. "I must follow my original intentions," he wondered where the mountains are, he asked aloud. Pathos was morally and physically certain that he had hidden over mountains when he entered Birmingham. "It must have been to the mountains," he thought. "I wonder how an ambulance driver would avoid it." Suddenly Pathos stopped in his tracks. He gazed ahead, his face flooding with all the joy that comes of recognizing a favorite old pair of shoes on a passing way. His eyes were riveted, not upon an old pair of shoes, for he would have had to ease down to do that, but at a sign, a large sign in electric lights, which were out, it being daylight. "They must be Evans," Pathos thought subconsciously. Pathos thought subconsciously to be sure, for his whole

WHITE HOUSE REPAIRS BEGUN

White House repairs have begun, as this picture shows. A large derrick for use in constructing a new roof is in the foreground.



White House repairs have begun, as this picture shows. A large derrick for use in constructing a new roof is in the foreground.

Mitchell Meets Birmingham Residents in Florida Strolls

By GEORGE H. MITCHELL Coral Gables, Fla., about five miles by street car line, with forty miles of water front (such as that) by the first of next month will have completed \$3,164,000 worth of new streets and sidewalks. He was the first swimming pool in the world, in my way of thinking, built in solid coral rock, smooth as a china plate, built as white, and washed, brushed and cleaned out white and dry once each week. This wonderful city has millions of dollars in hotels, stores, churches and municipal buildings.

Back to Miami. Miami is building a new city hall and courthouse, 27 stories high, already half done, and her banks, this writing, have on deposit at the city building permits amounting to more than \$100,000,000 and now I think I had best get down and tell you how Wolverine looked in the South, its people and everything. During our stay in Miami we were highly entertained by Mr. and Mrs. George Allen, formerly of Pontiac, who now are registered at the Hotel Biltmore, their shoes. In one of these apartments which should we find but Henry and his wife, and his wife, her name, I wonder, if I were more than good to us, and Henry with his auto took us out with others, for more than 200 miles of Miami sight-seeing.

Beautiful Pool Coral Gables was surveyed up and down and cross-wise. Its coral swimming pool and over 100 bathers, was a very fine sight, but we resisted the call. One side by moonlight the length and breadth of Miami beach was very enjoyable, and beyond description, that is, by my own eyes. On the South on the train we became acquainted with Mrs. Hood with three children going south for the winter, and soon learned that this party, being a daughter of Walter Colp, Birmingham's first newspaper editor, had been to the city and also visited with a friendly lady and just as we were about to part she told us her name was Mrs. McNeill, of Cleveland, and Mrs. Allen (can you beat that?) of Miami.

This son with his wife and son, and mother, gave us two half-days of auto sight-seeing among the many interesting places there. Then we were taken by Mr. Poole for a call on Charles Walker and family. Mr. and Mrs. Poole recovered from a hard spell of typhoid fever. Mrs. Walker, Thornton gave us a very interesting holiday home besides a six-bed room. Pathos. He was huffed into silence by a sibilant "Shut up, you young man, stop your mouth, tell you all, but for heavens' sake act chummy." It sounded good. Pathos went.

Both cities are thriving after the Binder Trust bust-up, and all are glad the wild cat times are over and things are settling back to order all through the South. I must not fail to mention the battleship that was dismantled by the witness stand and sold to capitalists. The steel hull was bought and sunk in the lake, and the rest of the ship was broken up with gorges, tropical roof garden, with palms and flowers to top it all. Other hotel makes a difference. It was declared unwholesome and closed by city authorities, but another party to the owners, who closed it themselves because it did not pay. This man thought that if it were anchored just outside the 11 mile limit, as a bar room, it would be a greater success. In 1920 the population of both cities was 8,652. In 1926 there were 10,000. There are now, it is claimed, there are only three. There are now, it is claimed, there are only three. There are now, it is claimed, there are only three. There are now, it is claimed, there are only three.

The Regatta We happened to arrive at the Palm Beaches for a gala time. We found the city of West Palm Beach, with its high school decorated with fish gorges, streamers of all colors and all sorts of things. It was all for a yacht regatta of three days, and Lake Worth was filled with motor boats of all sizes. (Continued on Page 5, Part 4)

Glimpses

at and about BIRMINGHAM By RAYMOND GIRARDIN

I am not an alarmist but I am worried over a mania that is too quickly gaining a foothold on the country, and I firmly believe, for the salvation of the race, something serious should be done about it. Please shut off the radio, put the children to bed, pull up a few chairs and let us talk it over.

I refer to this craze for asking another Justin Spafford and Lincoln Esty are responsible for it. They have compiled 2,000 questions. If you are of average intelligence you will be unable to answer 3,000 of these. (That is not a typographical error.) But if you are a moron like the rest of us... then it is just too bad.

During the week I have been forced to admit, with various blushes and stuttering apologies, that I do not know the name of the capital of Tennessee; nor what is used to make macaroni; how long it takes to make a pair of shoes; nor what a country is called that I had not even known freight locomotives backed up before they started; let alone know the name of the first president of the United States.

I say the thing has developed into a national mania and I use the word with the greatest caution. I do not mean to say that I do not know the name of the capital of Tennessee; nor what is used to make macaroni; nor how long it takes to make a pair of shoes; nor what a country is called that I had not even known freight locomotives backed up before they started; let alone know the name of the first president of the United States.

Drop into a grill for something by way of a sandwich. The girl with all the blond curls who, normally would be content to take your order and pass a casual mark on the weather metamorphoses into a wild-eyed demon of the nightmare. She is a maniacal cross examiner causing a question after question, and she cringe before her rapid fire questions. "Who killed Cook Robin? What did Dewey say before he died? What poet of the Seventeenth Century had dandruff? What did Homer's last words mean? How wide is Woodward avenue? Who is Pathos Petoskey? What city is famous for its onions? Name the representative from Utah? Where is Wagontracks? What is the name of its mayor?"

Instead of getting indignation from Mrs. sandwich you get a smile. The Birmingham fire department was called to the home of Scott A. Hersey, 557 West Maple Tuesday at 7:45 p. m. on a false alarm.

FALSE ALARM The Birmingham fire department was called to the home of Scott A. Hersey, 557 West Maple Tuesday at 7:45 p. m. on a false alarm.

ORDER TRUCKS TO CHECK LOADS All trucks in Birmingham are ordered to carry only one-half the gross load or one-half the carrying capacity as determined by the tire regulations by Police Chief James Anderson. This order has been issued to protect the roads, and will remain in effect until the roads and streets are settled, the chief said.

CONCRETE PAVEMENT Commerce road, from Orchard Lake road to the northern limit of the village of Commerce, length 8 miles; width, 20 feet. Ten Mile road, from Southfield road to the Dike highway, length 6 miles; width, 20 feet. Ten Mile road, from Southfield road to the Orchard Lake road, length 7 miles; width, 20 feet. Twelve Mile road, from the township line between North and Farmington Township west to the Grand River road; length, 5 miles; width, 20 feet. Crooks road, from Royal Oak (Continued on Page 3, Part 4)

CONCRETE ROADS The program of construction for the season includes 10 concrete roads and seven gravel roads. The total mileage of concrete will be approximately 81 miles and that of gravel construction 3 1/2 miles. Planned for construction this season are the two super highways, Northwestern and Eight Mile roads. Both of these highways will have a right of way 204 feet wide. The concrete roads are: Commerce, Lake, Ten Mile, Twelve Mile, Crooks, Fourteen Mile, John R., Northwestern highway, Eight Mile, and Dequandre.

GRAVEL ROADS The gravel roads are: Brewer, Irish, North Groveland, Baldwin, Noble, Andersonville, and North Leonard. The roads together with their location, length and width of construction follow: Commerce road, from Orchard Lake road to the northern limit of the village of Commerce, length 8 miles; width, 20 feet. Ten Mile road, from Southfield road to the Dike highway, length 6 miles; width, 20 feet. Ten Mile road, from Southfield road to the Orchard Lake road, length 7 miles; width, 20 feet. Twelve Mile road, from the township line between North and Farmington Township west to the Grand River road; length, 5 miles; width, 20 feet. Crooks road, from Royal Oak (Continued on Page 3, Part 4)

GRAVEL ROADS The gravel roads are: Brewer, Irish, North Groveland, Baldwin, Noble, Andersonville, and North Leonard. The roads together with their location, length and width of construction follow: Commerce road, from Orchard Lake road to the northern limit of the village of Commerce, length 8 miles; width, 20 feet. Ten Mile road, from Southfield road to the Dike highway, length 6 miles; width, 20 feet. Ten Mile road, from Southfield road to the Orchard Lake road, length 7 miles; width, 20 feet. Twelve Mile road, from the township line between North and Farmington Township west to the Grand River road; length, 5 miles; width, 20 feet. Crooks road, from Royal Oak (Continued on Page 3, Part 4)

GRAVEL ROADS The gravel roads are: Brewer, Irish, North Groveland, Baldwin, Noble, Andersonville, and North Leonard. The roads together with their location, length and width of construction follow: Commerce road, from Orchard Lake road to the northern limit of the village of Commerce, length 8 miles; width, 20 feet. Ten Mile road, from Southfield road to the Dike highway, length 6 miles; width, 20 feet. Ten Mile road, from Southfield road to the Orchard Lake road, length 7 miles; width, 20 feet. Twelve Mile road, from the township line between North and Farmington Township west to the Grand River road; length, 5 miles; width, 20 feet. Crooks road, from Royal Oak (Continued on Page 3, Part 4)

GRAVEL ROADS The gravel roads are: Brewer, Irish, North Groveland, Baldwin, Noble, Andersonville, and North Leonard. The roads together with their location, length and width of construction follow: Commerce road, from Orchard Lake road to the northern limit of the village of Commerce, length 8 miles; width, 20 feet. Ten Mile road, from Southfield road to the Dike highway, length 6 miles; width, 20 feet. Ten Mile road, from Southfield road to the Orchard Lake road, length 7 miles; width, 20 feet. Twelve Mile road, from the township line between North and Farmington Township west to the Grand River road; length, 5 miles; width, 20 feet. Crooks road, from Royal Oak (Continued on Page 3, Part 4)

GRAVEL ROADS The gravel roads are: Brewer, Irish, North Groveland, Baldwin, Noble, Andersonville, and North Leonard. The roads together with their location, length and width of construction follow: Commerce road, from Orchard Lake road to the northern limit of the village of Commerce, length 8 miles; width, 20 feet. Ten Mile road, from Southfield road to the Dike highway, length 6 miles; width, 20 feet. Ten Mile road, from Southfield road to the Orchard Lake road, length 7 miles; width, 20 feet. Twelve Mile road, from the township line between North and Farmington Township west to the Grand River road; length, 5 miles; width, 20 feet. Crooks road, from Royal Oak (Continued on Page 3, Part 4)

GRAVEL ROADS The gravel roads are: Brewer, Irish, North Groveland, Baldwin, Noble, Andersonville, and North Leonard. The roads together with their location, length and width of construction follow: Commerce road, from Orchard Lake road to the northern limit of the village of Commerce, length 8 miles; width, 20 feet. Ten Mile road, from Southfield road to the Dike highway, length 6 miles; width, 20 feet. Ten Mile road, from Southfield road to the Orchard Lake road, length 7 miles; width, 20 feet. Twelve Mile road, from the township line between North and Farmington Township west to the Grand River road; length, 5 miles; width, 20 feet. Crooks road, from Royal Oak (Continued on Page 3, Part 4)

COUNTY TO SPEND OVER \$4,000,000 YEAR ON ROADS

Bids Being Received Today For Construction of Highways

BUSIEST SEASON SEEN More than \$4,000,000 is to be spent on improving 113 1/2 miles of concrete and gravel roads in Oakland County during the coming season, according to Leon V. Beknap, county engineer. Bids are being accepted today for these roads. The first, on the Commerce road, was received Tuesday. Work will begin on the road and on several others about May 1 and will continue late fall.

Plans and specifications for the season's construction have been prepared by the engineering staff of the road commission during the winter months. "This season will be the busiest in the history of the road commission," Mr. Beknap said. "The actual expenditure for roads constructed during the summer in Oakland County, including both concrete and gravel, will total some \$4,000,000."

10 Concrete Roads The program of construction for the season includes 10 concrete roads and seven gravel roads. The total mileage of concrete will be approximately 81 miles and that of gravel construction 3 1/2 miles. Planned for construction this season are the two super highways, Northwestern and Eight Mile roads. Both of these highways will have a right of way 204 feet wide. The concrete roads are: Commerce, Lake, Ten Mile, Twelve Mile, Crooks, Fourteen Mile, John R., Northwestern highway, Eight Mile, and Dequandre.

GRAVEL ROADS The gravel roads are: Brewer, Irish, North Groveland, Baldwin, Noble, Andersonville, and North Leonard. The roads together with their location, length and width of construction follow: Commerce road, from Orchard Lake road to the northern limit of the village of Commerce, length 8 miles; width, 20 feet. Ten Mile road, from Southfield road to the Dike highway, length 6 miles; width, 20 feet. Ten Mile road, from Southfield road to the Orchard Lake road, length 7 miles; width, 20 feet. Twelve Mile road, from the township line between North and Farmington Township west to the Grand River road; length, 5 miles; width, 20 feet. Crooks road, from Royal Oak (Continued on Page 3, Part 4)

ORDER TRUCKS TO CHECK LOADS All trucks in Birmingham are ordered to carry only one-half the gross load or one-half the carrying capacity as determined by the tire regulations by Police Chief James Anderson. This order has been issued to protect the roads, and will remain in effect until the roads and streets are settled, the chief said.

FALSE ALARM The Birmingham fire department was called to the home of Scott A. Hersey, 557 West Maple Tuesday at 7:45 p. m. on a false alarm.

CONCRETE PAVEMENT Commerce road, from Orchard Lake road to the northern limit of the village of Commerce, length 8 miles; width, 20 feet. Ten Mile road, from Southfield road to the Dike highway, length 6 miles; width, 20 feet. Ten Mile road, from Southfield road to the Orchard Lake road, length 7 miles; width, 20 feet. Twelve Mile road, from the township line between North and Farmington Township west to the Grand River road; length, 5 miles; width, 20 feet. Crooks road, from Royal Oak (Continued on Page 3, Part 4)

CONCRETE ROADS The program of construction for the season includes 10 concrete roads and seven gravel roads. The total mileage of concrete will be approximately 81 miles and that of gravel construction 3 1/2 miles. Planned for construction this season are the two super highways, Northwestern and Eight Mile roads. Both of these highways will have a right of way 204 feet wide. The concrete roads are: Commerce, Lake, Ten Mile, Twelve Mile, Crooks, Fourteen Mile, John R., Northwestern highway, Eight Mile, and Dequandre.

GRAVEL ROADS The gravel roads are: Brewer, Irish, North Groveland, Baldwin, Noble, Andersonville, and North Leonard. The roads together with their location, length and width of construction follow: Commerce road, from Orchard Lake road to the northern limit of the village of Commerce, length 8 miles; width, 20 feet. Ten Mile road, from Southfield road to the Dike highway, length 6 miles; width, 20 feet. Ten Mile road, from Southfield road to the Orchard Lake road, length 7 miles; width, 20 feet. Twelve Mile road, from the township line between North and Farmington Township west to the Grand River road; length, 5 miles; width, 20 feet. Crooks road, from Royal Oak (Continued on Page 3, Part 4)

GRAVEL ROADS The gravel roads are: Brewer, Irish, North Groveland, Baldwin, Noble, Andersonville, and North Leonard. The roads together with their location, length and width of construction follow: Commerce road, from Orchard Lake road to the northern limit of the village of Commerce, length 8 miles; width, 20 feet. Ten Mile road, from Southfield road to the Dike highway, length 6 miles; width, 20 feet. Ten Mile road, from Southfield road to the Orchard Lake road, length 7 miles; width, 20 feet. Twelve Mile road, from the township line between North and Farmington Township west to the Grand River road; length, 5 miles; width, 20 feet. Crooks road, from Royal Oak (Continued on Page 3, Part 4)

GRAVEL ROADS The gravel roads are: Brewer, Irish, North Groveland, Baldwin, Noble, Andersonville, and North Leonard. The roads together with their location, length and width of construction follow: Commerce road, from Orchard Lake road to the northern limit of the village of Commerce, length 8 miles; width, 20 feet. Ten Mile road, from Southfield road to the Dike highway, length 6 miles; width, 20 feet. Ten Mile road, from Southfield road to the Orchard Lake road, length 7 miles; width, 20 feet. Twelve Mile road, from the township line between North and Farmington Township west to the Grand River road; length, 5 miles; width, 20 feet. Crooks road, from Royal Oak (Continued on Page 3, Part 4)

GRAVEL ROADS The gravel roads are: Brewer, Irish, North Groveland, Baldwin, Noble, Andersonville, and North Leonard. The roads together with their location, length and width of construction follow: Commerce road, from Orchard Lake road to the northern limit of the village of Commerce, length 8 miles; width, 20 feet. Ten Mile road, from Southfield road to the Dike highway, length 6 miles; width, 20 feet. Ten Mile road, from Southfield road to the Orchard Lake road, length 7 miles; width, 20 feet. Twelve Mile road, from the township line between North and Farmington Township west to the Grand River road; length, 5 miles; width, 20 feet. Crooks road, from Royal Oak (Continued on Page 3, Part 4)

GRAVEL ROADS The gravel roads are: Brewer, Irish, North Groveland, Baldwin, Noble, Andersonville, and North Leonard. The roads together with their location, length and width of construction follow: Commerce road, from Orchard Lake road to the northern limit of the village of Commerce, length 8 miles; width, 20 feet. Ten Mile road, from Southfield road to the Dike highway, length 6 miles; width, 20 feet. Ten Mile road, from Southfield road to the Orchard Lake road, length 7 miles; width, 20 feet. Twelve Mile road, from the township line between North and Farmington Township west to the Grand River road; length, 5 miles; width, 20 feet. Crooks road, from Royal Oak (Continued on Page 3, Part 4)

GRAVEL ROADS The gravel roads are: Brewer, Irish, North Groveland, Baldwin, Noble, Andersonville, and North Leonard. The roads together with their location, length and width of construction follow: Commerce road, from Orchard Lake road to the northern limit of the village of Commerce, length 8 miles; width, 20 feet. Ten Mile road, from Southfield road to the Dike highway, length 6 miles; width, 20 feet. Ten Mile road, from Southfield road to the Orchard Lake road, length 7 miles; width, 20 feet. Twelve Mile road, from the township line between North and Farmington Township west to the Grand River road; length, 5 miles; width, 20 feet. Crooks road, from Royal Oak (Continued on Page 3, Part 4)

GRAVEL ROADS The gravel roads are: Brewer, Irish, North Groveland, Baldwin, Noble, Andersonville, and North Leonard. The roads together with their location, length and width of construction follow: Commerce road, from Orchard Lake road to the northern limit of the village of Commerce, length 8 miles; width, 20 feet. Ten Mile road, from Southfield road to the Dike highway, length 6 miles; width, 20 feet. Ten Mile road, from Southfield road to the Orchard Lake road, length 7 miles; width, 20 feet. Twelve Mile road, from the township line between North and Farmington Township west to the Grand River road; length, 5 miles; width, 20 feet. Crooks road, from Royal Oak (Continued on Page 3, Part 4)

GRAVEL ROADS The gravel roads are: Brewer, Irish, North Groveland, Baldwin, Noble, Andersonville, and North Leonard. The roads together with their location, length and width of construction follow: Commerce road, from Orchard Lake road to the northern limit of the village of Commerce, length 8 miles; width, 20 feet. Ten Mile road, from Southfield road to the Dike highway, length 6 miles; width, 20 feet. Ten Mile road, from Southfield road to the Orchard Lake road, length 7 miles; width, 20 feet. Twelve Mile road, from the township line between North and Farmington Township west to the Grand River road; length, 5 miles; width, 20 feet. Crooks road, from Royal Oak (Continued on Page 3, Part 4)

GRAVEL ROADS The gravel roads are: Brewer, Irish, North Groveland, Baldwin, Noble, Andersonville, and North Leonard. The roads together with their location, length and width of construction follow: Commerce road, from Orchard Lake road to the northern limit of the village of Commerce, length 8 miles; width, 20 feet. Ten Mile road, from Southfield road to the Dike highway, length 6 miles; width, 20 feet. Ten Mile road, from Southfield road to the Orchard Lake road, length 7 miles; width, 20 feet. Twelve Mile road, from the township line between North and Farmington Township west to the Grand River road; length, 5 miles; width, 20 feet. Crooks road, from Royal Oak (Continued on Page 3, Part 4)