

Of Interest to Motorists

WHEN BETTER AUTOMOBILES ARE BUILT, BUICK WILL BUILD THEM



Everything a motor car can offer

Beauty Trim, graceful lines; charming proportions; rich Duesen coloring; tasteful interiors—all combine to make Buick beautiful.

Comfort Ample wheelbase and cantilever springs; softly cushioned seats, conveniently arranged—Buick builds comfort for driver and passengers into every car.

Performance Buick's powerful six-cylinder Valve-in-Head engine, now vibrationless beyond belief, provides a new and higher standard of motor car performance.

Economy Low operating cost, long life; slow depreciation—these are examples of the economy of owning a Buick.

Value Because Buick gives everything a motor car can offer—in greatest measure, at moderate cost—Buick is today the greatest value automobile dollars can buy.

Oakland's Large Pontiac Plant Attains Capacity Production

Pontiac, Mich., June 15.—Production of "The Last Word" in high-class motor car manufacturing lengthily exceeds the methods of the three great buildings of the Oakland Motor Vehicle Corporation near by. The company's new Pontiac Six Division are now running at full capacity, following their completion in the recent time of less than seven months and stand as a wonderful industrial achievement in modern floor construction and plant layout.

The motor manufacturing plant, and storage building, all new in design, comprise the major part of the \$2,000,000 expansion program. Their construction was the largest automotive project ever undertaken at one time as well as the largest factory construction program awarded in the United States during 1926.

Particular attention to the building's mammoth proportions, in point of interest, is the noticeable car with which they were designed for one dominating purpose, the "female" unhampered production of quality cars. From the lay visitor, it is obvious that the layout engineers took into consideration every detail of the manufacturing, putting the maximum tribulation operation in such a manner that the plant progress leads to the assembly lines.

Lake River System
The taking of raw material in their ground transformation into motor cars, is strikingly like a great river system, in which they exist in a flow, and, at times, with similar augmentments, taking volume as they go, and finally, pouring their waters into the great main stream. In remote corners of the plant, raw iron in its early stage, the melting, purifying and the final of steel and started on their journey. They start their way to other parts, along this way, they work out their and thus arrive eventually at the lines, not as finished parts, but as unadorned, blank, or with a simple shape, depending from an direct and each directed to its proper point where workmen will be available to the growing plant.

The details of location, as well as the mode of arrangement of mechanical equipment, was worked out with a view to obtaining the greatest efficiency with the least interference from traffic in the plant. Weather conditions, in addition, were considered. All loading material parts of the plant, from underground passages connect the lines with the car storage building, and the car storage building, making transfer of completed cars independent of weather conditions.

HUPP SURVIVES OLDS OFFICIAL SEVERE GRIND JOINS G. M. C.

Sixty-seven thousand miles in a month, with a total cost for maintenance of \$150, was recorded by Chester A. Hupp, 250 Duane road, Upper Kirby, Pa., as he turned in on the other day to Harper & Harper, Philadelphia distributors, on the same make of car.

"The old car certainly has exceeded itself to me," he said, "it was about ready to call it quits, but depended on, no ball was too stop for its journey, too long and too road too rough for a car which could always be counted on to take you where you were going and bring you back on reasonable time."

Harper & Harper men point out that the light still had its original features, original paint and was in splendid mechanical and body condition despite its 67,000 miles of travel.

Jane Goll, wife of Carl Goll, was sentenced to three years' imprisonment in a jail for a crime of forcing the working man, flooded with natural light, wearing the highest type of accurate workmanlike heater and ventilating apparatus, the best as any workman and laborer facilities.

The new Pontiac Division is located on the Grand Trunk Parkway. It has 10 miles of track on its own freight cars. There are 600 acres of floor space within the plant, 80 miles of power and 400 miles of water supply and drains. The largest steel mill in the city, and the largest cement roofing cover, were installed to provide these materials for the plant. More than half a million feet of glass make up the miles of skylight. Yet the plant, for all its superlatives, required less than seven months for completion, figured from the time the grading commenced until production was actually started in the new building.

Williams Buick Sales

602 S. Woodward—Phone 1200

Open DAY and NIGHT INCLUDING SUNDAY

CAR WASHING and POLISHING

REPAIRING and GENUINE BUICK PARTS

CHRYSLER "50" ALONE

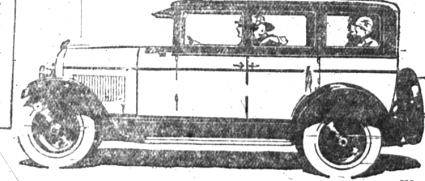
Gives Such Performance—Beauty—Comfort

\$750 to \$830
f. o. b. Detroit

Chrysler "50" superiorities in appearance are apparent at a glance—truly full size, mohair plush upholstery, smartness of line, beauty of color and trimness of appointment which make you proud to own and drive it.

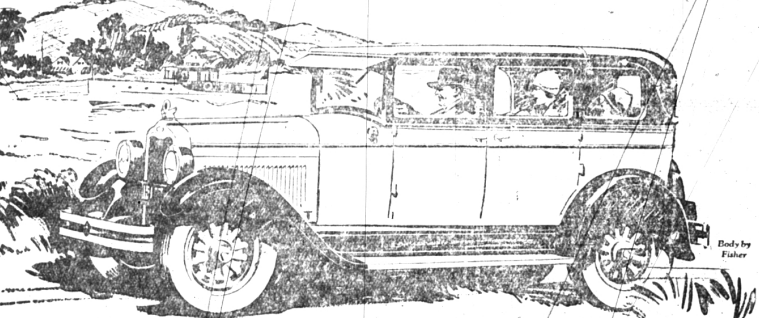
Chrysler "50" superiorities in performance are easily recognizable in a real trial over any route you select, yourself at the wheel—50 and more smooth miles an hour, 5 to 25 miles in 8 seconds, 25 miles to the gallon, riding and handling ease beyond all previous experience in a car of this price, combined with the lasting dependability born of the engineering genius and manufacturing precision embodied in Chrysler Standardized Quality.

We are eager to have you see the Chrysler "50" ride in it and drive it, fully confident that its outstanding superiorities over any and all cars of its price will inevitably sway your decision in its favor.



WURSTER & STAPLETON
132 West Maple Phone 674

DRIVE A CHRYSLER TO PROVE A CHRYSLER



"unusual distinction plus six-cylinder performance and the uncramped comfort of a full-sized body!"

\$1295
LANDAU SEDAN

But so many buyers are making it the car of their choice largely because it provides, at lowest price, every element of unusual distinction, plus six-cylinder performance and the uncramped comfort of a full-sized body!

Six-cylinder performance—with all the spirit, dash and smoothness achieved by Oakland's advanced engineering!

Uncramped comfort—possible only with wide, deep relaxation!

And a price of only \$1295!

You can spend a day, a week or a month comparing, but you'll never discover a value like this! Come in—let us prove it.

Yet the success of this most luxurious automobile. And one glance at Oakland Landau Sedan reveals how superbly it answers today's demand for cars of arresting appearance and distinction.

True, it reveals the aristocratic beauty of Fisher body design and execution. True, also, its exceptionally complete equipment embraces such unusual items as gasolene gauge on the instrument board; walnut finished window mouldings and inlaid instrument panels; nickel-plated bumpers, lamps and radiator; and foot control for the tilting-beam headlights.

Oakland Six, \$1025 to \$1295. The New and Finer Pontiac Six, \$775 to \$975. All prices at factory. Delivered prices include minimum handling charges. Easy to pay on the liberal General Motors Time Payment Plan.

Shaw Motor Sales

118 E. MAPLE AVE. PHONE 1160 BIRMINGHAM

The Greater OAKLAND SIX

PRODUCT OF GENERAL MOTORS ~ WINNING AND HOLDING GOOD WILL

Arthur Hawes of St. Paul, arrested for attempted suicide, said he took poison to frighten his wife.

Thomas Horbison of Chicago was convicted of stealing from his mother-in-law, after being caught in the act by his sister-in-law.

INSURE TODAY

Tomorrow May Be Too Late

Thos. H. Cobb

Insurance Agency

in First State Savings Bank Bldg. BIRMINGHAM PHONES 948-949

When so many People Ride on Miller Tires there is a reason

29x4.40 \$8.40
30x3 1/2 O. S. \$8.20

GUARANTEED VULCANIZING THAT PAYS

Roadside Tire Shop

530 S. Woodward Phone 1245

TRUCKING OF ALL KINDS

Ashes Collected
Tin Cans Removed

Norman L. Shovan
316 Lincoln Ave.
BIRMINGHAM
Phone 1480-W