

Of INTEREST TO MOTORISTS

Order Your Coal NOW
It's Going To Be Higher
Parks Coal Company - Phone 175-R

CHEVROLET TEST AUTO COVERS
46,150 MILES IN 4 MONTHS' CRUISE

A number of the General Motors proving ground at Milford, Michigan, comes to light today with the announcement that Chevrolet test car number 112 has been returned from a proving ground cruise after withstanding a wearing strain of 46,150 miles in four and one-half months over various types of roads and a wide range of driving conditions.

Number 112 had a standard light delivery passenger body of standard commercial class and had been taken out of regular production at the Flint plant. When, in the course of the usual routine, it was replaced at the proving ground by another Chevrolet, it still held in it many miles of unaided transportation, engine never failed despite the grueling experience of so many miles of driving.

Forty miles out of Detroit in the hills and valleys of Jackson County, where the outdoor auto model laboratory is located, this Chevrolet underwent a preliminary test in the course of improved automotive transportation. In the course of these tests, the car was called upon to go through all the types of service an automobile may be here and there.

It was kept on test for 125 days, "working" on an average of 318 miles a day. There were days when it was driven more than 500 miles in order to try its stamina. In addition to the test work at the proving ground, the car carried mail to Detroit and returned each day, permitting of a study and check of the car under actual road conditions.

Engineers and technical men who drove and checked the car at the proving ground had to find the many difficulties an automobile has to contend with in its lifetime. They thought of the driver who pools his car over long "back roads"; they considered the motorist who runs his clutch; they had in mind the man who habitually "tramps on the brakes" another who runs a cold motor, or the one who asks his motor to pull out of a mud hole.

OAKLAND MOTOR HAS NEW MODELS

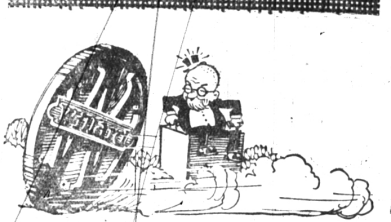
Business Men May Now Convert Autos From Pleasure Vehicles Into Delivery Cars

For the benefit of merchant and business men who do not have a sufficiently large volume of business to warrant a special delivery vehicle, and trading job men who must carry a large stock of supplies, the Oakland Motor Car Company now introduces two especially adapted, but equally popular, the Pontiac 45 coupe and roadster suitable for mounting two types of "fly off" commercial bodies. The cars are ideal for combination business and personal use.

The six-cylinder body or the closed panel body may be fitted on either the roadster or the coupe.

In a very short time in the case of the roadster by simply adding the rumber seat rear deck cover, and in case of the coupe by removing the rear deck cover. Both these cars in the Pontiac six line are adapted in that purpose because the rear deck is fixed to the floor. Each type can be used interchangeably with or without the "fly off" body.

The inside dimensions of the open express body on the Pontiac six roadster are: width, 35 inches; length, 58 inches; height of panel, 19 inches. The roadster is equipped in the closed panel body with in detachable door and like a top the Pontiac coupe, although folding top which is completely removable.



The Battery Dollar That Rolls Farthest

More useful life in your car from a Willard Charged-Bone Dry Battery. You see the acid poured in. You know it's a brand new battery. And you know, too, that you'll never have to pay for a re-insulation job at any time during its life in your car.

Birmingham Battery Service
125 E. Maple Phone 902

The Willard Battery men

The WATER CURE gives you

-less cost per mile!

BRING YOUR TIRES TO EVANS FOR V-U-L-C-A-N-I-Z-I-N-G Work Guaranteed New Low Prices

Every tire we sell is cured from both sides—not merely from the outside. That makes a tremendous difference in the mileage you get. The whole tire gets uniform cure—uniform cure. No part over-cured—no part under-cured. Tough rubber—all through the tire—binds the plies, breaker and tread into one strong unit. And the tread itself comes to you with all the strength and life left in it.

Goodrich Silver towns

Evans Tire Shop
124 S. Woodward Ave. Phone 1354 Birmingham, Mich.

BOATS USING AUTO ENGINE

Pontiac Six Motor Proves Adaptable To Use In Marine Field

Though the Pontiac engine was expected to marine use by the Gray Marine Motor Company less than two months ago, sales of this power plant have already been made in many foreign countries.

In Heligoland, Finland, where motor boating, both for a living and for pleasure, is on such a large scale that marine engines are indispensable in operating an automobile are in Detroit, the "Gray Six" motor, the trade name of the Pontiac six marine power plant, has found an enthusiastic market. A fleet of eight of these Gray Pontiac engines was installed recently in boats giving a speed of 24 miles an hour.

Testimonials in large numbers have been sent to the Gray Marine Motor company, Detroit, attesting the endurance and speed of these engines. One of the striking testimonials came from the Gulf Cruise Company of Fairhope, Ala., a glowing letter telling how well the engine made a 28-hour motor run, in riding out a storm.

Bertman Jepsen of Rock Hall, Md., who purchased another 2 of the Pontiac Gray's last fall, states that "from flywheel to clutch it is the finest operating piece of machinery I have ever used and I have been using gasoline engines for 21 years." The average run of these engines operating motor boats from the little town of Maryland.

Not only are these engines used in pleasure motor boats, auxiliary power, fishing and utility boats but also in ferries. On the Illinois River, near Detroit, Ill., six ferries operate and the Pontiac Gray are being used in many services. In this particular work, the engine turns an 18 x 12 propeller 1,200 R. M. The average of the terms is approximately 1 miles per hour. The requirement of the engine is maintaining this endurance and reliability.

The request to supply Pontiac six engines last fall was made to the Oakland Motor Car Company by the Gray Marine Motor Company. The Pontiac engine was selected because of certain features which made it a particularly efficient power plant for motor boat use. Marine engines must be heavily constructed throughout and must be capable of top speed for long periods of time. Bearings, crankshafts and cylinder ports must be of heavy durable construction to withstand the intense heat and terrific vibration encountered in marine use.

The motors are sold to the Gray Marine Motor Company less, muffler, transmission, carburetor, distributor and clutch.

The overall strength and durability of the Pontiac six engines in more than 150,000 Pontiac automobiles are proved by the success of these engines in a type of grueling work which requires an excess of motor bearing strength seldom called upon from the average motor.

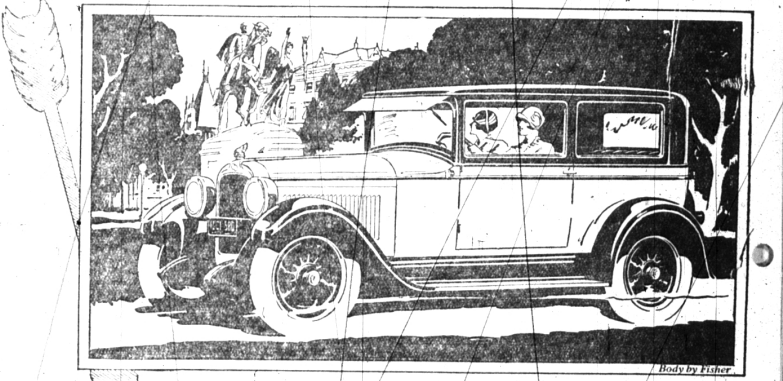
Miller Tires GEARED-TO-THE-ROAD

Many People Think Miller Tires Cost MORE—

30x3 1/2	7.25
31x4	11.80
32x4	12.40
29x4.40	8.40

ROADSIDE TIRE SHOP
530 S. Woodward
Phone 1245 Birmingham

Even Greater Value Because of Lower Prices



NEW LOW PRICES \$775

SEDAN

Coupe	875
Sport Roadster (4-pass)	835
Sport Cabriolet (4-pass)	835
Landau Sedan	895
De Luxe Landau Sedan	975
Delivery Chassis	585
De Luxe Screen Delivery	760
De Luxe Panel Delivery	770

All prices at factory. Cash and 10% down, balance in 12 months. Delivery in 30 days. Tax and license extra. Dealer's price includes minimum handling charges. Free to phone the General Motors Time Payment Plan.

For the fifteen months following its introduction, the Pontiac Six was acclaimed everywhere as a value never before known in the field of low-priced sixes.

It was a car so sturdy, so comfortable, so pronounced in its beauty and thrift, that Pontiac Six production broke all records for a new make of car.

Then recently came the New and Finer Pontiac Six at sharply reduced prices. It introduced new Fisher bodies—longer, lower and styled to arresting new standards of beauty.

It offered such important refinements as tilting-beam headlights with foot control, more convenient operating levers and a clutch of even smoother action.

And over night, almost, Pontiac Six sales swept to new and sensational figures. For here was even greater value because of greater quality at lower prices!

If you have not seen the New and Finer Pontiac Six—

—if you have not acquainted yourself with its new qualities of luxury and distinction—

—come in and learn how, for as little as \$775, you can now obtain a six-cylinder Sedan whose beauty, performance and reliability are responsible for the greatest success ever enjoyed by a car of its type.

for Everybody, Everywhere

CHEVROLET

The Coach
Widely popular because of its handsome, comfortable seating arrangement and low price.
\$595 Flint, Mich.

The Imperial Landau
The most complete of auto coaches, with four outside seats, built-in motor and battery.
\$780 Flint, Mich.

The Short Cabriolet
The most distinctive two-row passenger car ever offered in this country.
\$715 Flint, Mich.

The Landau
The appearance, equipment and price of the new Landau. Four outside seats and motor and battery.
\$745 Flint, Mich.

The Roadster
A favorite among those who demand exceptional appearance and two-passenger open car.
\$525 Flint, Mich.

The Coupe
Combines most appearance and all-round utility with low price. Popular for personal or personal car.
\$625 Flint, Mich.

The Sedan
A beautiful and roomy car, with marked distinction in lines, color and equipment. A complete business-like person in its class.
\$695 Flint, Mich.

The Touring Car
A car of unusual value and economy. Features of the low roof and oil compartment, and is able to withstand hard usage.
\$525 Flint, Mich.

Tracy & Cotton, Inc.
Open Nights and Sundays—505 N. Woodward
BIRMINGHAM, MICH.
QUALITY AT LOW COST

Shaw Motor Sales
700 S. Woodward PHONE 1160 BIRMINGHAM

The New and Finer PONTIAC SIX