

# At Your Door

### the Modern Laundry service

Our Birmingham route is now open, with a man in the district all the time. We will give you year-round service, summer and winter, the same careful thorough service that is so praised by fastidious Detroit housewives. Call Birmingham 1419, Detroit Edison road 2525.

### Rough Dry

You will find only satisfaction in our summer of returning your work. It is done absolutely clean and dry, hand-ferried, and that's what distinguishes our service from the rest.

10c Lb.



F. W. Brede, Jr.,  
Sole and Franchise

## NEW HOSPITAL IS ACCLAIMED BY VISITORS

### Dr. Griswold Promises \$1 Daily Staff For Tubercular Patients

### ANNUAL MEETING HELD

Franklin of the new Oakland County Tuberculosis Hospital was visited by all the visitors from around the state who attended the annual conference of the Michigan Sanatorium Association last Friday afternoon at the new hospital located in Waterford Township on Cooley Lake Road.

Within the last 40 years, the death rate from tuberculosis was down to about one per cent. Dr. Randall, president of the Michigan Sanatorium Association, told more than 100 doctors and nurses who registered at the new Oakland County Tuberculosis Hospital for the conference. In spite of this he predicted that thousands of people will die from the disease in Michigan in the next 25 years, if the present conditions continue.

### Oakland County Praised

Dr. Randall praised Oakland County for having men so intelligent as to see the need of the tuberculosis hospital which is now completed.

"Only by the observation of general health rates can this disease be eradicated," said Dr. Randall. "There is no other cure for it."

Dr. John W. Downey, superintendent of the Delta Memorial Sanatorium, Lower Michigan, spoke to the gathering on the "Relation of the Sanatorium to the Medical Profession." Dr. R. D. Thompson, superintendent of the Fairmount Hospital, Kalamazoo, spoke in charge of the program for the conference. Willis M. Brewer, chairman of the board of auditors began the morning session, Friday, with a welcoming address. Jacob Scherer, president of the Board of Trustees of Michigan County Sanatorium, East Lansing, spoke to those present on the "Obligation of the Board of Trustees of the Sanatorium." General discussion was continued after each speech.

### Dr. Griswold Speaks

Dr. D. M. Griswold, deputy commissioner of the State Department of Health, pointed out the Sanatorium situation in Michigan.

His talk he cited the new tuberculosis code part of the last session of the legislature which will provide for aid for tubercular patients in every county. The plan of the State Health department is to pay \$1 each day towards the maintenance of indigent tubercular patients in approved sanatoriums.

Inspection of the hospital was made after a luncheon at noon.

### School Ventilation Plans

The first speech in the afternoon was made by Mrs. Blanche H. Kites, executive secretary of the Grand Rapids Anti-Tubercular Society. She said the present situation in the schools does not promote good health in the children. A ventilation in the schools is very inadequate, she said. Both Dr. F. H. Bartlett, superintendent of Michigan County Sanatorium, and Miss Maude Bresnahan of the Kalamazoo County Sanatorium spoke on the work of the following year. Various recreational devices for tubercular patients were suggested by Miss Bertha Hollister, occupational therapist, Ann Arbor in her talk.

Dr. George Storky, superintendent of Ingham County Sanatorium, Lansing, was elected president of the association at a business session.

### GIRL IS PRAISED AS HEROINE

Attempts of Dorothy Fortson, 10 years old, living at Pettibone lake, to rescue the two girls, Edith and Doris Irish, of Waukesha, Wis., who drowned July 17 after stepping into a deep hole in Pettibone lake, were declared brave by the jury at a bench trial at noon.

When the two girls first went down near the shore where the Pettibone club camp is located, Miss Fortson, a good swimmer, went to their rescue. She was trapped by one of the girls and was only able to save herself by a hard struggle.

### LEGAL NOTICES

STATE OF MICHIGAN, County of Oakland ss. I, George B. Storky, Clerk of the Court, do hereby certify that the following is a true and correct copy of the judgment rendered in the case of *Thompson v. Thompson*, filed in the County of Oakland, Michigan, on the 24th day of July, 1932.

It is ORDERED, That said defendant, George B. Storky, do pay to said plaintiff, George B. Storky, the sum of \$100.00, with interest thereon at the rate of 6% per annum, from the date of the judgment until paid in full. This order is subject to the terms of the judgment rendered in the case of *Thompson v. Thompson*, filed in the County of Oakland, Michigan, on the 24th day of July, 1932.

Witness my hand and the seal of said court, at Grand Rapids, Michigan, this 28th day of July, 1932.

George B. Storky, Clerk of the Court.  
Dated: July 28th, 1932. Oakland County.

### TWILIGHT BASEBALL LEAGUE STANDING

The standing for the Twilight League, the soft ball league and the Junior boys league for the week are as follows:

Twilight League		Soft Ball League		Junior Boys League	
Team	W-L	Team	W-L	Team	W-L
Franklin	3-1	Fremont	4-1	Adams	2-2
Rapids	3-1	Varsity Club	2-1	Balltown	2-2
Methodist	3-1	Service Club	1-1	Burnham	2-1
Eastbrook	2-2	Millbrook	1-1		
Presbyterian	2-2	Midwest	1-3		

### LEGAL NOTICES

STATE OF MICHIGAN, County of Oakland ss. I, George B. Storky, Clerk of the Court, do hereby certify that the following is a true and correct copy of the judgment rendered in the case of *Thompson v. Thompson*, filed in the County of Oakland, Michigan, on the 24th day of July, 1932.

It is ORDERED, That said defendant, George B. Storky, do pay to said plaintiff, George B. Storky, the sum of \$100.00, with interest thereon at the rate of 6% per annum, from the date of the judgment until paid in full. This order is subject to the terms of the judgment rendered in the case of *Thompson v. Thompson*, filed in the County of Oakland, Michigan, on the 24th day of July, 1932.

Witness my hand and the seal of said court, at Grand Rapids, Michigan, this 28th day of July, 1932.

George B. Storky, Clerk of the Court.  
Dated: July 28th, 1932. Oakland County.

## WOODWARD LAND BRINGS BIG PRICE

### Essig Nursery to Move Office To Romeo Following Sale Of Property

Fifteen acres of land fronting on Waver Woodward avenue at the south end of Pontiac that cost less than \$3000 on mere 20 years ago, will be sold recently by the Essig nursery for approximately a quarter of a million dollars.

W. W. Essig, of Romeo, Mich., founder of the Pommeaux nursery, died in 1897, to leave his little nursery business to his son, Geneva, New York, to Detroit. He travelled about the surrounding country for weeks and finally selected a tract 25 miles out on the dirt road that was to become the world's greatest highway and on the outskirts of the growing town of Pontiac.

The far-sightedness of Essig, senior, in establishing his business far from Detroit as he had, is remarkable when it is remembered that in 1897, and for years afterwards, the D. M. Ferry Road farm covered what is now the Dexter Boulevard region and extended as far south as Grand Boulevard and Grand River avenue, within five miles of the city hall.

When father built his first packing house and began planting away out here in the country, said Robert W. Essig, president of the company, "no one ever thought of making a trip here from Detroit in less than a day. Occasionally a 'horseless carriage' made the trip, but it was a rare event and a dreaded adventure."

And as he speaks, out on "Waver Woodward," eight continuous streams of motor traffic rumble along over the 200 feet of concrete.

Approximately 300 acres, situated back of the Woodward frontage, which has changed hands, remain under cultivation by the Essig nursery, although six head quarters is now being moved to Romeo, where they have purchased three farms on Van Dyke Road just 35 miles from Detroit.

One of the interesting features of the new and old Pontiac nurseries, according to R. J. Mahan, treasurer & general manager, will be the development of a public park along the Van Dyke avenue frontage, with pool and fountains and a garden and which will contain a wide variety of rare plant life in North America.

## Bloomfield To Get New Development

### Property amounting to 675 acres has been obtained by consolidating the farms of Sidney D. Willson, Sherman D. Decker, W. P. Harris and C. L. Rockwell, and is to be developed in a community by the Phoenix Knott Woodard

The Phoenix Knott Woodard property, the property located on Long Lake, Sunar Lake and Franklin roads in Bloomfield Township, is to be developed in a community by the Phoenix Knott Woodard. Approximately \$1,000,000 was invested in the land it is said. In addition it is expected that \$1,750,000 will be spent for improvements. The land is being developed by the Phoenix Knott Woodard and the community is to be named Phoenix Knott Woodard.

## Inspection Made Of Hospital Herd

### The Pontiac State Hospital was the scene of the first of a series of "Dairy Day" programs to be held throughout the state today when many farmers from Oakland County and south-eastern Michigan attended.

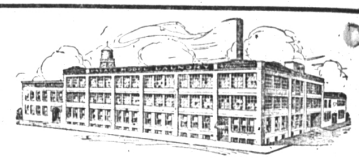
The Michigan Holstein-Friesian Association and the dairy department of the Michigan State College, presented the program. Opportunity was given those who were present to look over the famous Pontiac Holstein herd, maintained by the state hospital.

## 1928 License Plates To Be White on Green

### Michigan automobile license plates being made today at the Jackson State prison for the duration of the coming year have a background of green with white figures, according to announcements from the office of the secretary of state at Lansing.

The name "Michigan" will be written across the figures in green for passenger cars instead of in blue the figures as in previous years.

Miss Mary G. Law of the Department of Agriculture at Washington has received an index of developments in agriculture from 100 R. C. to T. Green Hill and



## Vacation Things

Don't wait until the last minute. Those garments you'll want to take along with you on your Summer outing should be sent to us now for laundering. Have them laid away fresh and clean—ready to be packed—at your leisure.

## PALACE MODEL LAUNDRY

GLENDALE 5680  
109 E. Maple Phone 110  
30 CONVENIENT BRANCHES and hundreds of agencies in Greater Detroit

# You Fill the Market Basket and we'll Carry it

By phoning 1035 you may fill your market-basket and we will deliver it to you. Or, if you wish, any purchase made right at the store may be left for us to deliver. And we assure you that it will be done promptly. There is no reason why you should be the errand and delivery boy for your family.

### 4 Deliveries Daily 4

Shopping for food in the summer is not the most enjoyable of tasks for the housewife. For it means getting things in order at the house first, then dressing for street wear, and then finally making your way up town for the purpose of obtaining foods that satisfy summer appetites.

### 4 Deliveries Daily 4

Our prices and our quality are two features of this store which we guard jealously. Each week more Birmingham housewives are learning about our high quality that accompanies low prices. Each week more Birmingham housewives are becoming REGULAR patrons. We invite your use of our delivery service to prove these words.

Complete Line of Home Grown Vegetables

MEATS - POULTRY - FISH FRUITS AND VEGETABLES

# BIRMINGHAM CUT RATE Quality Market

Phone 1035 130 W. Maple

## Consumers Cut Rate Meat Market

188 S. WOODWARD AVENUE (Next Door to A. & P. Store)

"Just a few steps from high prices"

# SPECIALS

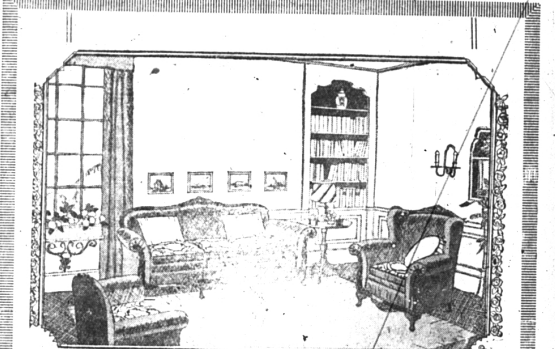
for Thursday - Friday - Saturday

Supreme Skinned half or whole Smoked Hams	Lb.	29c
Supreme Lean Sliced Bacon	Lb.	50c
Supreme Boiled Ham	Lb.	65c
Sugar Cured, Smoked Picnic Hams	Lb.	18c
Supreme Fancy Creamery Butter	Lb.	47c
Round Steak	Lb.	36c
Sirloin Steak	Lb.	40c
Porterhouse Steak	Lb.	45c
Pot Roast	Lb.	22c
Genuine Spring Leg of Lamb	Lb.	44c
Roasting Chickens	Lb.	38c

FULL LINE OF PORK - VEAL and COLD LUNCHEON MEATS

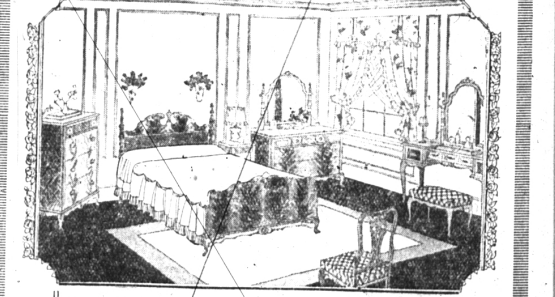
We thank Birmingham Buyers for their ready approval of low prices which they manifested at our opening last week. We shall continue to give quality at a minimum cost.

## The Two Rooms That Really Count!



### THE LIVING ROOM

Your Living Room is the visible reflection of your culture. It shows your home making interests and your sense of true leisure. Here is a suite that possesses true beauty and is the fundamental unit in which you may use to build around a tasteful scheme that will express your own individuality. It is a room of walnut and covered all over with Inlaid in two tones. The three pieces shown are priced at \$155 (LESS 10% FOR CASH)



### THE BEDROOM

Two Essentials are necessary in a Bedroom Suite—and they are both of equal value—comfort and style. Comfort because the average person spends one-third of his life in bed. Style because a quite beautiful atmosphere in a bedroom induces rest. This suite as pictured is ideal. It is made in walnut finish and comes in four pieces—Inlaid bed, dresser, chest of drawers and Vanity dresser. The three pieces are priced at \$98 (LESS 10% FOR CASH)

# SEVERANCE FURNITURE CO.

Fifth Street at Washington Ave. "WE LEAD—OTHERS FOLLOW" Royal Oak

### AWNINGS

CAMPERS' SUPPLIES

Waterproof Coverings for Every Use

## THE PONTAC TENT AND AWNING CO.

2000 Oakland Ave. Phone 132