

WOMAN TELLS OF EUROPEAN IMPRESSIONS

Mrs. Shain Attends Rotary International With Her Husband

TAKES AIRPLANE TRIP

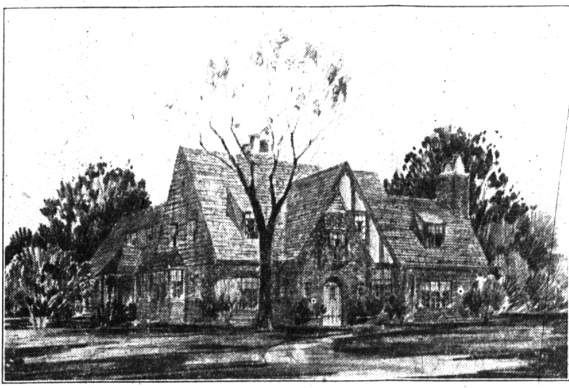
Passenger airplanes, so novel in the United States, are becoming a thing in Europe and the airplane passage from Paris to London as described by Mrs. Charles Shain this week upon her return from Europe, is a fairly uneventful affair, except for its novelty.

attended with a party of about 30 other Rotary delegates and their wives into Germany and Switzerland with a return to Paris before flying to London.

"The most impressive reaction which I received from that convention" said Mrs. Shain, "was the idea which seemed to make itself felt that this immense body of men, 6,500 delegates from Europe, England, America and Australia were gathered to promote international friendship and good will and for the sake of the general good."

From Ostend where they stay

NEW BRAISTED HOME IN BLOOMFIELD HILLS



One of the charming new homes in the Quanton Lake section of Bloomfield Hills is the residence under construction for Mr. and Mrs. Leroy Braisted of Birmingham.

and comforts have been embodied in the Braisted home. Vitrified china fixtures, three tile baths, controlled water heating system, integral parts of the new ten room dwelling which is to cost approximately \$25,000.00.

Wilson Best Known "We do not realize here how great Woodrow Wilson is in Europe," says Mrs. Shain, "I believe he is at present the best known American in Europe and the tablet in his honor at Geneva is a revelation to many Americans."

equivalent to more than two times the amount of this bond issue. Appraisals—The land has been appraised by independent appraisers P. J. Aldrich and Wm. A. Raigan (both members of Detroit Real Estate Board) and Lamien Brothers Inc.

Sinking Fund—The borrower is required after the first year to deposit monthly, in advance with the Trustee, 1/2 of the amount of interest, principal and income tax due each year, except that on final maturity, this monthly amount will be the same as to principal as the year next preceding.

Maturities and Denominations—These bonds are offered in denominations of \$1000, \$500 and \$100, maturities ranging from two to ten years at par and accrued interest, subject to prior sale.

of the Royal Palace Hotel they went on into Holland and Germany, visiting Weisbaden, the famous spa and the wonderful cathedral at Cologne. From there they returned to Switzerland.

Tells of Plane Flight "The flight from Paris to London was my first experience in air and while it was very interesting I did not find it altogether pleasant as the constant thrashing of the motors produces a vibration which becomes wearisome and the noise is so deafening that all the passengers must put cotton in their ears."

Impressed by Simplicity "Back in London for five days, we were quartered at a hotel directly across from the King's Hotel where his horses are kept and we watched daily the parade of fine horses when they were taken out and exercised in both England and Scotland I was impressed with the quiet enjoyment of the people on their holiday jaunts. There are so few automobiles there and they seem to be the people on their holiday jaunts. There are so few automobiles there and they seem to be the people on their holiday jaunts.

Bring Back Mementos Among the many beautiful mementos which the Shains brought with them are exquisite bead bags from Paris, wood carvings, a tiny watch as big as a button from Switzerland, Swiss plan pocketbooks and watch fobs from Scotland, and a woody brown shawl made of three shades of natural colored wool from Shropshire sheep.

DUKE'S DEATH DUE TO ELECTROCUTION Coroner's Jury Returns Verdict In Inquest Into Accident. An inquest into the cause of the death of John Duke, who lived on Linden avenue in Detroit, by O. C. Farmer, coroner, and a coroner's jury in Pontiac showed that death was due to an electric shock it was announced today.

While working as a mason on the new apartment at Southfield avenue and Merrill street, Duke touched a high tension wire near the scaffold on which he was standing inside the building, 30 feet above the ground.

ing road, Edison avenue district. This follows a discussion of the matter at the meeting Monday night of the village commission. According to Mr. Farry, the pavement to be laid by the village may be assessed on the village commission. Farry said.

SUMMER PRICES

Save More for the Early Buyers of

COAL

Delivery Any Time

They are specials and will save you money. Don't delay as this market can only move upward.

R. C. Moulthrop Lumber Co.

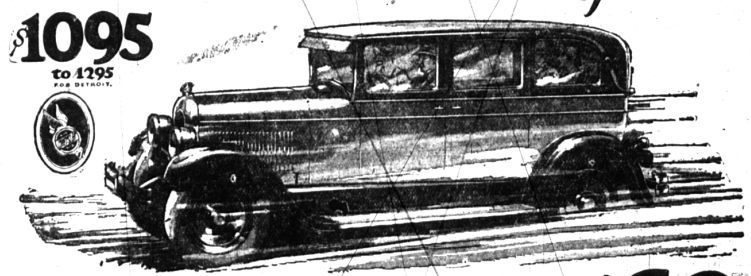
Lumber Phone 1 Coal

DETAILS SOUGHT ON PAVEMENT

Plan to Improve Roads in Edison Avenue District Presented to Manager For Study

An investigation is being made today by Village Manager James W. Farry and Francis D. Doty, village attorney, into the steps that will have to be taken to accomplish the repair of pavement in the Edison Avenue District.

CHRYSLER Scores Again



GREAT NEW "62"

New Standards of Performance—New Quality—New Value—New Luxury

WALTER P. CHRYSLER and his engineers present today a new car—the great six-cylinder "62"—which carries the name Chrysler still more emphatically to the head and front of the procession of engineering and manufacturing progress.

Sensational Features of Quality and Value

- 62 and more miles per hour
5 to 25 miles in 7 1/2 seconds
22 miles to the gallon
Six-cylinder motor
Four-wheel hydraulic brakes
Lower, more sweeping stream lines
Longer, roomier bodies
Saddle-spring seat cushions
Fine figured mohair
Drum-type Parabeam headlights
Road Levelers—front and rear
Handsome 17-inch steering wheel with light control
Steering wheel pitch easily adjustable to any driver
Maximum driving vision assured by smaller corner pillars
Handsome, indirectly-lighted instrument panel
Quiet visor on closed cars
New type top with jack-knife fold on open bodies
Rigid English type curtains for use with top down on touring car

New Chrysler "Red-Head" Engine The new Chrysler "Red-Head" engine offering the fullest advantages of extra speed, acceleration and hill-climbing ability inherent in modern high-compression gas is standard equipment on the Roadsters of the new Chrysler "62". It is also available for all other body types of the "62", as well as on all body models of the "70" and Imperial "80" at slight extra cost. Chrysler's new "Red-Head" can now be included also in the earlier "60", "70" and Imperial "80" models at a reasonable charge.

Touring Car, #1095; 2-door Sedan, #1145; Roadster (with rumble seat), #1175; Coupe (with rumble seat), #1245; 4-door Sedan, #1245; Landau Sedan, #1295; f. o. b. Detroit, subject to current Federal excise tax

WURSTER & STAPLETON 132 West Maple Phone 674

CHRYSLER MODEL NUMBERS MEAN MILES PER HOUR

DEPENDABLE

Any used car seen on our floor is good for more than enough satisfactory miles to assure the owner of his money's worth. You can always count on that.

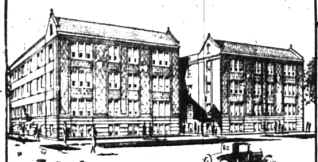
EVANS-LEGG MOTOR CO. 119 South Woodland Ave. Birmingham, Mich. Phone 301

A USED CAR IS ONLY AS DEPENDABLE AS THE DEALER WHO SELLS IT

Order Your Coal NOW It's Going To Be Higher

Parks Coal Company - Phone 175-R

We offer when-as and if issued, subject to Prior Sale



\$115,000.00

Lamson Court Apartment

First Mortgage 6 1/2 % Real Estate Bonds

UNION TRUST COMPANY, TRUSTEE

Security—The bonds of this issue are secured by a closed first mortgage on both land and building, and by first lien on the net annual earnings from the property. This property is located at the corner of Pallister Avenue and Lamson Place, Detroit, fronting 130 feet on Pallister Avenue, and running back a depth of 84 feet on Lamson Place. (This property is located within a short block of Henry Ford Hospital, and but a few blocks distant from both Providence and Herman Kiefer Hospitals.)

Borrower—The bonds of this issue are a direct obligation of Paul O. Winkler and Irvin T. Winkler who are the principal owners of Paul O. Winkler Company. Their sworn statement shows their present net worth, not including anything for this investment.

The Milton Strauss Corporation

First Mortgage Real Estate Bonds

NINTH FLOOR, PENOBSCOT BUILDING DETROIT, MICHIGAN

All information contained in this advertisement has been carefully investigated by us and we believe it to be borne out by the facts.

GEORGE H. MITCHELL, Resident Representative

Please send me circulars fully describing your Current Bond Offerings

Name

Address

City

State