

News Of The Auto World

OFFICIALS PHONE LARGEST ORDER

The largest export order for motor cars ever placed by telephone was consummated last week by the Studebaker corporation by means of the new transatlantic radio telephone service to London when L. J. Olier, managing director of Studebaker (Great Britain) Limited, sat at his desk in London and asked Paul G. Hoffman, vice president of the

Studebaker corporation, seated at his own desk in South Bend, Ind., for delivery of 1,000 Eskine Six cars. As the Eskine Six Studebaker's new car, sells in England for 295 Pounds Sterling the total amount of the order represents nearly \$1,500,000 worth of business — said to be not only the largest automobile order placed by means of the new service but one of the largest single business transactions made thus far via the wireless telephone.

Improvements In Dodge Auto Made

Gear shifting at the slightest touch and smoother, more gentle application of power are credited to an improved clutch which is now used in all Dodge Brothers motor cars. "Of the many advantages which the new design offers, the one which appeals most to the lady driver," says C. Evans, of the Evans-Legg local Dodge Brothers agency, "is the unusually soft pedal action. It seems remarkable that mechanism which controls the application of so much power can be operated with so little muscular effort as is now required to push the clutch pedal down.

"Despite the unusual smoothness and gentleness with which the clutch takes up its load it holds its position when engaged. But the feature which appeals most to all drivers is the remarkable ease with which the gears can be shifted. In some cars it is necessary to hold the clutch depressed for a few seconds before shifting the gears into speed to avoid a noisy shift. Everybody who drives the Dodge Brothers car of today is instantly impressed with the ease and silence with which the gears can be shifted while the car is getting under way and with the ease with which they can be shifted down into a lower speed when traffic or road conditions necessitate."

AUTO INDUSTRY IS U. OF A GODFATHER

Detroit's automobile industry has become the godfather of the College of Engineering of the University of Detroit. Over 200 members of the 600 students are now employed part time by local automobile companies, according to John W. Timm, M. S., E. E., professor of automotive engineering and co-ordinator of the college.

Eighty-four local plants are giving employment to these students, who are studying engineering under the first-year co-operative system of two weeks at school and two weeks in the shops in all lines of activity from assembly to experimental work and from tool makers to designers.

The students work in pairs, one working while the other is in school and vice versa. As a result of the interest which is stimulated by their contact with the industry, more than 80 per cent of the students graduate with degrees in automotive engineering, although five others are given.

The co-operative system of engineering education has been successful at the University of Detroit from both the standpoint of the employer and the student, Professor Caton says. "The employer gets a good class of workmen, who are ambitious to rise in their chosen profession. In 1924 only 14 plants employed our boys; now there are 84. These figures speak for the employers' viewpoint.

"The students are able to get both practise and theory as a result of this combination. From the faculty's point of view, it is more important that the student learns practical engineering while employed than that he earns his livelihood which enables him to work his way through college."

NOTICE OF MORTGAGE FORECLOSURE SALE

Default having been made in the terms and conditions of a certain mortgage made by Grace Blakely, formerly known as Robert H. Jones and Helen Wayne County, Michigan to Pauline E. Wick of Highland Park, Michigan, said mortgage was dated the twenty-third day of August, A. D. 1924, and was recorded in the office of the Register of Deeds for Oakland County, Michigan, on August 26, 1924, page 391-4 Oakland County Records, and a copy of said mortgage contained has become operative.

There is by reason of said default due and unpaid at the date of this notice the sum of \$209.33 and no part thereof, and the statute in such case made and provided, notice is hereby given that on Monday, the Twenty-eighth day of March, A. D. 1927, at eleven o'clock in the forenoon of said day, Eastern Standard Time, the undersigned will, at the front door of the Court House in the City of Pontiac, Michigan, sell at public auction the premises situated in said mortgage, including all the improvements thereon, to the amount due as aforesaid on said mortgage, together with the cost of said interest, insurance premium and other charges, and the following described premises situated in the County of Michigan, and recorded as follows: Lot numbered fifty-four (54) Somerset Subdivision of part of the City of S. W. 1/4 of Section 35, T. 1 N. E. 2 Township of Royal Oak, Oakland County, Michigan, according to that thereof as recorded, Michigan, 1914, Liber 35, page 13, Plats, Oakland County Records, and recorded as follows: Dated December 16, 1926.

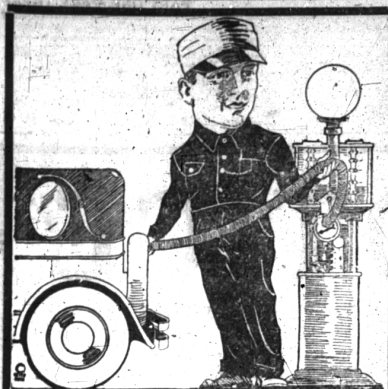
PAULINE E. WICK, Mortgagee
TORRETT & ALLESTON, Attorneys
605 Murphy Bldg., Highland Park, Mich. 35-47

NOTICE OF MORTGAGE FORECLOSURE SALE

Default having been made in the terms and conditions of a certain mortgage made by Robert H. Jones and Helen Wayne County, Michigan, to Hall Realty Company, a Michigan Corporation of the City of Highland Park, Michigan which said mortgage was dated the sixteenth day of February, A. D. 1926, and was recorded in the office of the Register of Deeds for Oakland County, Michigan, on February 17, 1926, whereby the power of sale in said mortgage contained has become operative. There is by reason of said default

now due and unpaid at the date of this notice the sum of \$244.48 and no part thereof, and the statute in such case made and provided, notice is hereby given that on Monday, the Twenty-eighth day of March, A. D. 1927, at eleven o'clock in the forenoon of said day, Eastern Standard Time, the undersigned will, at the front door of the Court House in the City of

Pontiac, Michigan, sell at public auction the premises described in said mortgage, to the amount due as aforesaid on said mortgage, together with the cost of said interest, insurance premium and all legal costs allowed by law and provided for in said mortgage, including attorney's fees, the following described premises situated in the Village of Farmington, County of Oakland and State of Michigan, and recorded as follows: The West forty-five (45) feet of



MAHAFFY'S SERVICE STATION
S. Woodward at Frank

You've Missed Something! If you aren't acquainted with the kind of Gas Station Service they give at MAHAFFY'S SERVICE STATION on Woodward at Frank Street—JUST DRIVE IN ONCE! AND WE KNOW THAT WE WILL SEE YOU OFTEN.

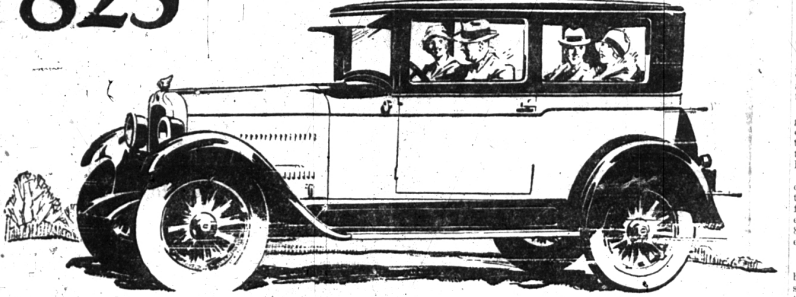
Indian Gas Havoline Oil
Mobiloil and Pennzoil
Complete Alemite and Greasing Service

GOODRICH Silvertown Balloons and Radio Cords

VULCANIZING GUARANTEED To Last Life of the Tire
Evans-the tire man
Woodward at Brown Phone 1354

Tell Your Merchant You Saw His Advertisement in THE ECCENTRIC

SEDAN OR COUPE \$825



No other low-priced six will ever give you this

It is not beyond the realms of possibility that some day there will be offered a newly created six, closely approximating in basic design and price the Pontiac Six as introduced a year ago. Whoever builds it will be deserving of great credit. For the Pontiac Six resulted from the combined efforts of Oakland and General Motors engineers, using the matchless discoveries of the General Motors Research Staff and the matchless facilities of the General Motors Proving Ground. But even if that car does make its appearance, it will lack one powerful inducement to ownership that is of

paramount importance in contemplating the Pontiac Six: Its design and construction will not be conclusively proved by millions of miles of actual service in the hands of thousands of owners. And that is essential, even in a car which was tested and developed as the Pontiac Six was for over three years prior to its announcement! Design and construction so convincingly demonstrated means more than the elimination of fundamental weaknesses. It means peace of mind from one year's end to the other—and that is what buyers have a right to get, no matter how much or how little they pay!

Pontiac Six, \$825 to \$975. Oakland Six, companion to Pontiac Six, \$1025 to \$1295. All prices at factory. Bodies by Fisher. Easy to pay on the liberal General Motors Time Payment Plan.

Shaw Motor Sales
118 E. MAPLE AVE. PHONE 1160 BIRMINGHAM

PONTIAC SIX

A Finer DODGE BROTHERS MOTOR CAR
New in Beauty, Comfort and Performance — Still more Dependable

Now ready for your inspection and personal test—a finer Dodge Brothers Motor Car than ever before, due to many new and vitally important improvements. So important, in fact, that only a personal inspection will give you an adequate idea of what further engineering advances and greater production have accomplished in extra value. Read this partial list of the latest improvements and then investigate:

- A New Clutch—Simple, Prompt, Sure and Silent.
- Softer Pedal Action
- Easier Gear Shifting
- New Body Lines—as smart and graceful as any on the boulevards
- New Color Combinations of Striking Beauty
- Still Sturdier Bodies
- Seats Re-designed for greater comfort
- New Silent-Type Muffler
- Improved Universal Joint, Propeller Shaft, Differential and Axle Shafts—creating greater sturdiness and resistance to wear
- And Many Other Smart New Refinements of Detail.

Remember, too, that all these are in addition to many important improvements recently announced, including the five-bearing crank shaft and the two-unit starting, lighting and ignition system that inspired owners to new expressions of enthusiasm and satisfaction.

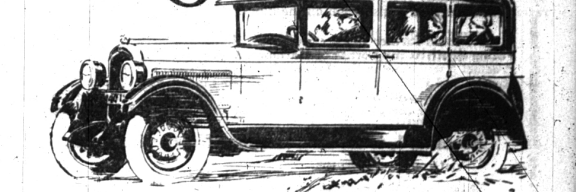
Look at these big roomy cars and you will realize that it is not possible to invest more wisely in dependable transportation.

Standard Sedan	895
Special Sedan	945
DeLuxe Sedan	1075

F. O. B. DETROIT

Evans-Legg Motor Co.
119 South Woodward Avenue
Phone 301—Birmingham, Mich.

10% higher in quality - no higher in cost



Over and above the sterling worth of the Hupmobile chassis, Hupmobile gives a heaping measure of value in performance and equipment. There is surpassing beauty of line and finish; staunch clear-vision bodies; rich mohair upholstery; thermomatic heat control, and a score of other features of luxury and utility. running, in freedom from repairs and adjustments. Hupmobile accepts the burden of this extra cost. You pay no more for the brilliance and stamina of the Hupmobile Six than for cars of a less vigorous mold. Compare its value with any six within \$500 of its price. You will find no reason for, or willingly accept less—knowing Hupmobile to be the closest-priced six on the market.

But Hupmobile value goes deeper than equipment. In building the car itself, Hupmobile spends 10% more to make this Six a better and a longer-lived car. Owners know the difference in smooth

Come In and See These Equipment Features — Many Recently Added.
Thermomatic Heat Control; Gasoline Filter; 4-wheel Brake Color Options; Vision Ventilating Windshield; Clear Vision Bodies; Dash Gasoline Gauge; Force Feed Lubrication; Oil Filter; Mohair Upholstery; Rear View Mirror; Special Vibration Damper; Sun-Visors; Tilting Beam Headlights; Automatic Windshield Wipers; Walnut Grained Instrument Board.

Hupmobile Six
R. E. RAMSEY
113 Brownell Street
BIRMINGHAM

PHONE 550