

Birmingham Eccentric

PART TWO

OAKLAND COUNTY'S GREATEST WEEKLY NEWSPAPER

"For a Bigger and Better Birmingham"

GOOD PRINTING DONE QUICKLY AT A REASONABLE PRICE—THAT'S THE BIRMINGHAM ECCENTRIC "YOUR PRINTERS" Telephone 11 or 12

FORTY-NINTH YEAR—NO. 43

BIRMINGHAM, OAKLAND COUNTY, MICHIGAN THURSDAY, FEBRUARY 10, 1927

\$1.50 PER YEAR—SINGLE COPIES 5c

JAMES S. BUTLER ACCEPTS POSITION AS PROBATE HEAD

Named by Judge Stockwell To Succeed The Late Lovell Dryer

HAS SERVED AS SHERIFF

Refusing a more lucrative position on the state highway commission, James S. Butler, of Oakland County, has accepted the appointment of County Probate officer made by Judge Ross Stockwell. Mr. Butler gave as his reason for the choice his fondness for the office and the fact that he believes there is a large field for service in this line of work.

Appointed



JAMES S. BUTLER, who is well known in Oakland County as a Probate officer, was appointed by Judge Ross Stockwell.

Gimpes

at and about BIRMINGHAM

By RAYMOND GIRARDIN

Birmingham is a village where tranquility reigns so far as the four of blast furnaces, the grinding of machinery and the commotion of factories goes. It is, I am assured, a place where homes. This can not be contradicted, and it all makes so much stranger the great noise of city-breathing audible on a clear night to one who walks on the outskirts. It throws its sound far enough into the distance and its sound is that of the shuffle of a monster, half human and half mechanical who pants and struggles as he moves about.

Coastless, they walk leisurely on these days... over the top, no mind, they go... something a little worn about its books of poetry for the first time... relaxation after steering themselves against blizzards... dogs by the hundreds... hyperbole for effect... hundreds... actually Youth, Youth, Youth. Red-checked youngsters playing marbles on a composition slate and springlike day on the lawn in front of a house whose door is ajar. In a window, a woman whose heart had been punished, watched them. Her eyes look at the springlike day and the youngsters playing marbles. It could not express all that one feels after an incident like this.

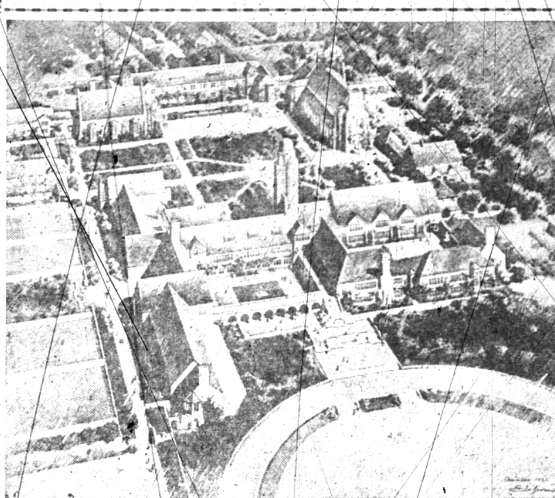
"Birmingham waiting room," call the conductors of streetcars and the drivers of automobiles as their vehicles approach Woodward and Maple avenues... and the voice among his men to give the meaningful signs, several maps and the finest Sherlock Holmes available. The waiting room, alas, has gone the way of the dodo. Apropos of the season there being so much of a certain interpretation of the faithful R. S. V. P. from the very young member of the family of M. Leigh Lynch. Receiving an invitation with letters inscribed the youthful friend abruptly translated them to Mrs. Lynch as meaning, "Reserved Seats for Valentine Time."

Night seems to offer a cloak for the indulgence of one's vanities, else, how do you account for the fact that he so often strolls in his place of business after dark carrying in the fashion of a prince? "And I wonder, while blue laws are being proposed, whether some day, hopeful for instance, that our attempt legislator against this sort of thing."

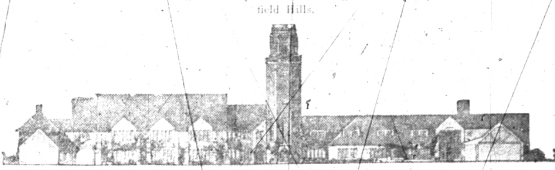
REAL ESTATE FIRM INCREASES STAFF Two New Members Are Added By Saunders-Colgrove. Buck. Anticipating the most active season this district had ever known, Charles E. Buck of the Birmingham Real Estate firm of Saunders-Colgrove-Buck announced the addition of two well-known men to this organization. One is Morris B. Draper, Sr., who has lived in the Bloomfield district for many years and has been active himself in the buying and selling of Oakland County real estate.

INJURED IN FALL Charles Olin, 524 Wallace street, is confined to his home today as the result of injuries received Monday morning when he fell over a ledge on which he was standing. A vertebra in his back was dislocated and his wrist was sprained. Dr. George Goodheart, of Detroit, who is attending him, expects him to be recovered within a few days.

New Cranbrook School and Headmaster



A bird's eye view of the new school as it will soon appear. The grounds, covering approximately 65 acres, are beautiful. In the background may be seen the large athletic field. It is located in Bloomfield Hills.



MAIN BUILDING This is the administrative building of the new school group. Many of the finest features known to architecture are employed. (Story on page 1.)

When a truck driven by H. V. Raikna, a famous African hunting guide, who was 7 feet 5 inches tall, was recently killed by a lion. At the London zoo is a tiger that was raised on milk and is as tame as a house cat.

When a truck driven by H. V. Raikna, a famous African hunting guide, who was 7 feet 5 inches tall, was recently killed by a lion. At the London zoo is a tiger that was raised on milk and is as tame as a house cat.

When a truck driven by H. V. Raikna, a famous African hunting guide, who was 7 feet 5 inches tall, was recently killed by a lion. At the London zoo is a tiger that was raised on milk and is as tame as a house cat.

When a truck driven by H. V. Raikna, a famous African hunting guide, who was 7 feet 5 inches tall, was recently killed by a lion. At the London zoo is a tiger that was raised on milk and is as tame as a house cat.

When a truck driven by H. V. Raikna, a famous African hunting guide, who was 7 feet 5 inches tall, was recently killed by a lion. At the London zoo is a tiger that was raised on milk and is as tame as a house cat.

When a truck driven by H. V. Raikna, a famous African hunting guide, who was 7 feet 5 inches tall, was recently killed by a lion. At the London zoo is a tiger that was raised on milk and is as tame as a house cat.

When a truck driven by H. V. Raikna, a famous African hunting guide, who was 7 feet 5 inches tall, was recently killed by a lion. At the London zoo is a tiger that was raised on milk and is as tame as a house cat.

When a truck driven by H. V. Raikna, a famous African hunting guide, who was 7 feet 5 inches tall, was recently killed by a lion. At the London zoo is a tiger that was raised on milk and is as tame as a house cat.

THREE FINED AFTER LINCOLN ACCIDENT

Found Guilty Of Drunkenness In Justice Court Here

Three men paid a total of \$110 fines for drunken charges Saturday morning in the court of Judge Floyd S. Buck. The men are Vern Morris, 114 Putnam avenue, Pontiac, driver of the car, who was fined \$30 for drunk driving, Charles Baker, 112 W. Frank street, Pontiac, and J. E. Walls, 112 E. Frank street, Pontiac, who were each fined \$30 for drunkenness.

Morris was also given 60 days sentence, which is suspended for 30 days, during which he must pay the damage to Wilson's car, failing to do this, Morris will serve out the remaining 30 days of his sentence in the county jail.

Many fine residents are being erected on the Birmingham Park subdivision which has been recently sold, it is said. "Birmingham Park is typical of the development of the company's property," Mr. Raymond said. "Forest Hills, East Maple Gardens and Tawafiero Estates will no doubt develop as well."

"People in Detroit," he continued, "know that Birmingham is an ideal home community and many are coming here and erecting fine homes."

ROUND HOME A New Book of Verse By CHAS. S. KENNER Birmingham's Open 81-23 Chubb 4250 Leather LABELLE'S BOOKSTORE 125 1/2 W. Maple Phone 1225

Try an Eccentric Classified Ad.

NO JOB, TOO SMALL! Painting, Paperhanging, Decorating ESTIMATES GLADLY GIVEN AL HENRY "Service" "Satisfy" My Motto My Aim 415 Woodward Ave. BIRMINGHAM Phone 1029

Food for Thought

22 Detroit business men bought homesites in our Birmingham Developments last month.

5 bought houses. You know values increase in a well restricted community.

Why let the Detroit men make all the profits. Let us show you how money works in a Walsh, James & Wasey Development.

Walsh, James & Wasey Co. 1530 Penobscot Bldg. Office Also in Birmingham and Bloomfield Hills. If We Birmingham or Bloomfield Hills—See Walsh, James & Wasey Co.

ORPHEUM PONTIAC

Direction W. S. Butterfield Theatres, Inc. NOW PLAYING THE WRIGHT PLAYERS In John Golden's Bitany Comedy of Married Life The 1st Year

Orpheum Orchestra NIGHTLY AT 8-15 MATINEES: Wed-Sat. 2:30 P. M. Phone 3696 For Seats

New Play Every Sunday ALL NEXT WEEK Starting Sunday, Feb. 13 The Thrilling Mystery Play "The Green Beetle"

OTHER WRIGHT PLAYERS UNITS NOW PLAYING AT Powers, Grand Rapids, Jackson, Jackson, Cadillac, Marquette, Ft. Wayne, Ind., Ann Arbor, Zanesville, O. "You Can't Go WRONG on a WRIGHT Show"



EMANCIPATION From Future Want Through Savings

ALL freedom to live—to enjoy the best fruits of life's span of toil—is today based on financial success. A small sum, deposited now in the savings department of this reliable Bank lays the foundation of independence in the "age of declining income."

First State Savings Bank BIRMINGHAM, MICH.