

THE FASTEST FOUR IN AMERICA
MILE-A-MINUTE PERFORMANCE

\$875

FULLY EQUIPPED 4-DOOR SEDAN (NOT A COACH)

A New Car at a Lower Price

The fastest Four in America—also the smartest and sturdiest. Powered by the famous "124" motor. Lowest priced Dodge Sedan ever sold—and the best. Longest springbase of any car under \$1000. Turns in 38 foot street. Twenty-five miles per gallon at 25 miles per hour.

You can not buy greater value than Dodge Brothers offer in this new car.

EVANS-LEGG MOTOR CO.
119 S. Woodward Birmingham Phone 301

DODGE BROTHERS, INC.

Tell Your Merchant You Saw His Advertisement in THE ECCENTRIC



Tomorrow May Be Too Late
Thos. H. Cobb

Insurance Agency

in First State Savings Bank Bldg.
BIRMINGHAM PHONES 948-949

Tell Your Merchant You Saw His Advertisement in THE ECCENTRIC

August Savings for Tourists



You can name your price at our store and we'll match it with a good tire—but you can't name your price when an old tire blows out hundreds of miles from home. Save money—save delays—save disappointments—by choosing your tires and other equipment here before you start—at price levels adjusted to make "home buying" attractive.

Goodrich Silvertowns

29x4.40 \$11.95 30x5.77 \$23.45
31x5.25 \$20.55 33x6.00 \$24.90

Goodrich Radio Cords

Built in the Goodrich factories with Goodrich resources back of their value
30x3 1/2 \$7.75 29x4.40 \$9.45

Signal Cords

ROCK BOTTOM PRICES ON SIGNAL CORDS
30x3 1/2 \$6.95



BRING YOUR TIRES TO EVANS
for V-U-L-C-A-N-I-Z-I-N-G
New Low Prices
Work Guaranteed

Evans Tire Shop

182 S. Woodward Ave.

Phone 1354

Birmingham, Mich.

BEST IN THE LONG RUN

HUDSON HAS NEW ENGINE

Whole General Action Of Motor Is Improved By Innovations

The story of the new Hudson Super Six—which is now announced and displayed by Houghner Bros., Hudson-Essex dealers and distributors—is essentially a story of a striking innovation in engine design.

General appearance is improved with important advances both in the interior and exterior. But while the new bodies are now attractive, the most striking step ahead is the new motor, for which the Hudson organization puts forth sweeping and positive claims. The most interesting are:

1. The motor employs unusually high compression with its accompanying power and efficiency yet avoids spark knock, roughness and other qualities heretofore thought unobtainable with such a motor.

2. No special or doped fuels are necessary or even desirable; the design of the motor cares for the problem. Hudson engineers point out that ordinary gasoline has actually more heat units than special mixtures—the problem has been to use them.

3. Fuel energy formerly wasted is turned into power. Greater power is developed at all speeds—yet the motor is described as highly economical considering horsepower developed.
4. A degree of smoothness and flexibility is gained which may be compared with that of a steam engine. The motor has outstanding acceleration and pulling power.

Ask For Patents

So important does the Hudson Motor Car Co. regard these improved results that it has applied for basic patents on the design and the principles involved. They are presented to the public as a compensation-invention to the Super-six principle of motor balance which has been a feature of Hudson construction for more than 10 years.

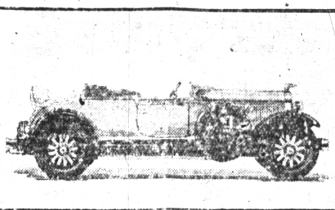
Hudson engineers explain that the most interesting feature of the new motor is the manner in which fuel is fed to the cylinders, and then fired. In this new design, the manifold is cast into the head of the motor, with passages so arranged to the separate cylinders that each receives equal charges of fuel.

The intake valve is located in the combustion chamber so that it overlaps in part the exhaust valve, which is placed below it. This coming in from above, the fuel enters the combustion chamber freely through a large-sized valve. If there is any heavy wet mixture in the fuel, it drops directly on the exhaust valve below. As this valve becomes heated as soon as the motor starts firing, this heavy gas is immediately vaporized and passes into the cylinders in an ideal condition for firing. At the same time the dropping of this mixture on the exhaust valve helps keep that unit at a more moderate temperature, adding to its life.

Tests Prove Motor

Enduring tests of this motor have proved, it is said, that this feature of design prevents the difficulty of raw gasoline entering the cylinders, thence draining down the cylinder walls to cause dilution of the motor oil. The exhaust valve is a highly effective "hot-spot," built within the motor itself.

New Oakland All-American Roadster



New Oakland Sport Roadster with 117 inch wheelbase

In the actual firing of the fuel, which has now reached the cylinders, even more important advances have been perfected. Fuel compression has been raised to an exceptionally high figure. In all modern motors this is recognized as requisite to high efficiency, but the problem has been to avoid fuel "knocks."

The Hudson design accomplishes this by the shape of the combustion chamber and the location of the spark plug. Instead of being placed at the center of the combustion chamber the plug is located to the extreme side near the two valves. When a spark is generated, the first explosion of the highly compressed fuel is extremely sharp. But the first effects are localized in the small chamber around the valves, and serve chiefly to seal the valves very tightly. The flame then spreads over into the cylinder. There it exercises a pushing rather than an explosive effect upon the piston. The effect may be likened to modern cannon processes, a "sight-seeing" but

OAKLAND MAKES NEW TYPE AUTO

Roadster Is Especially Good Looking Car. Many Novel Features Are Added

Entirely new in design—larger, more powerful, more roomy—with a wheelbase of 117 inches, new engine, new chassis, new Fisher bodies, new Duco colors and a host of advanced engineering features—the Oakland All-American Six is being presented throughout the nation this week.

This brilliant, flashing car of sleek greyhound lines is distinctly new—designed from the ground

service has been placed in operation.

A Pontiac Six car, with a specially built bus body with capacity for 12 persons, carry the visitors through the broad aisles. The bus is being run on a regular schedule.

Since this plant has been placed in operation, the number of visitors has steadily increased, due to the fact that it is one of the largest plants in the country under one roof and because it is one of the most modernly equipped automobile plants to be seen anywhere, with several new features of building construction and operations.

The bus takes visitors first through the engine manufacturing section, then the car assembly and lastly the car storage. The driver of the car tells of the various operations and stops at processes of unusual interest. Thus the trip which formerly took more than two hours has been reduced to less than a half hour in addition to taking the fatigue out of the trip.

SIGHT-SEEING BUS FOR AUTO PLANT

Visitors to Pontiac Plant Now View Different Manufacturing Operations While Riding

Because of the tremendous size of the new Pontiac plant of the Oakland Motor Car Company and because of the desire to spare the hundreds of visitors and dealers who daily wish to go through the plant, the necessity of walking miles to follow all the manufacturing processes, a "sight-seeing" bus

up by the skilled Oakland engine—built by American workmen using American precision production methods, it has been called the "All-American Six." Despite the larger size of the car, designed by American engineers, the advanced engineering features, tested on General Motors' sign and the more luxurious finish, great American proving ground they are offered at new low prices.

63 cents per Thousand

it takes nerve but it pays---

—to take out your pencil and do a little figuring on TIRE MILEAGE.

If you think you got a bargain on your present tires STOP THINKING AND KNOW. Your speedometer will tell you the distance you've gone. A few minutes' inspection will tell you their condition. You know what you paid. Divide what you paid by the number of thousand miles.

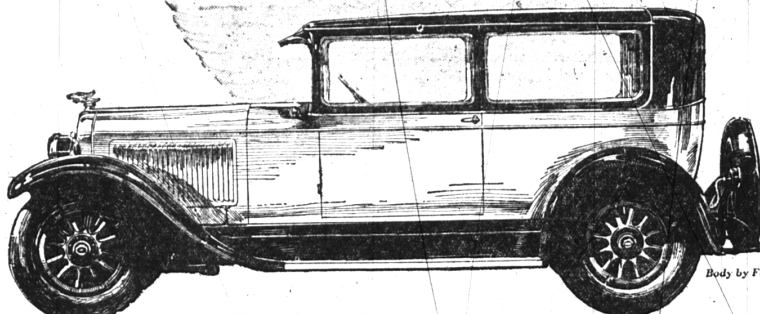
If the result is MORE than 63 cents PER 1000 then it's up to you to know what MILLER TIRES are giving your neighbor in mileage satisfaction. We'll tell you the NAME of the man who got 26,000 MILES on his last set of MILLERs. And there are scores of such PROOFS in our files.

Roadside Tire Shop

530 S. Woodward Birmingham Phone 1245

Announcing The OAKLAND ALL-AMERICAN SIX

At New Low Prices!



Body by Fisher

Built to meet every American demand for Reliability, Style and Performance

All-American—that's the word! No other word describes it!

American design. American lines. American endurance for the roughest American roads—proved on General Motors' great American proving ground and built by American workmen using American precision-production methods!

A bigger, better, brilliantly beautiful car. New bodies—new chassis—new engine. New standards of performance, endurance, and value—and

NEW LOW PRICES!

There's mystery in every detail of the new Fisher bodies—the mastery of America's master body builders.

Low, fashionable lines emphasized by sweeping full-crown fenders. Arresting new Duco colors. Rich new upholstery.

In the chassis—new factors of reliability and endurance—factors that people have long hoped to get—but never in a car of Oakland's price.

A longer, deeper, heavier frame, more rigidly braced.

A new and softer clutch. A new and smoother transmission. New elements of steering ease. 4-wheel brakes for safety. Smaller wheels (19"), a longer wheelbase

(117"), and an exceptionally low center of gravity for better roadability.

And a new engine that represents a new interpretation of American performance standards!

An engine of 212 cubic inches displacement—the largest used in a car of Oakland's price.

Power—smoothness—snap and silence that will be the talk of all America from this day hence.

A combination of features never before employed in any automobile engine!

—a 70½-lb. crankshaft, counterbalanced and incorporating the Harmonic Balancer —a crankcase of bridge truss construction—Oakland's famous rubber silencing principle—and a new combustion chamber design from General Motors' Research Laboratories.

And what a galaxy of new features! A gasoline pump that supercedes the long familiar vacuum tank—a new and efficient system of crankcase ventilation that makes oil changes a matter of months, not weeks—triple engine protection by gasoline, oil and air filters—

—and such factors of luxury and convenience as tri-clustered instrument panel, decorated with bas-relief silver platinum engraving and including a gasoline gauge—large new corrugated steering wheel—colored garish rails and enough others in addition to make this advertisement read like a catalog!

Value? None like it in all America today!

Come in—and see this latest triumph of America's automotive supremacy—the new Oakland All-American Six!

2-DOOR SEDAN

\$1045

Landau Coupe \$1045 4-Door Sedan \$1145

Sport Roadster \$1075 Cabriolet \$1145

Landau Sedan \$1265

All prices at factory. Delivered prices include minimum handling charges. Easy to pay on the Liberal General Motors Time Payment Plan.

PRODUCT OF GENERAL MOTORS

SHAW MOTOR SALES

700 S. Woodward Ave.

Phone 1160

BIRMINGHAM