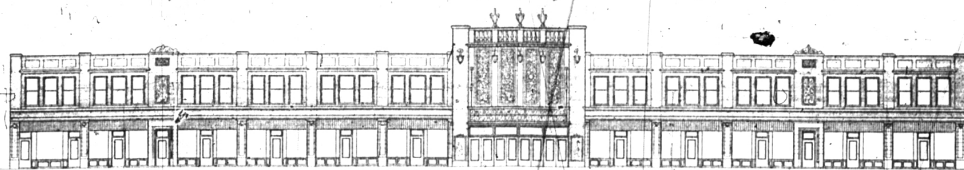


BRIGGS COMMERCIAL AND DEVELOPMENT CO'S
New Birmingham Theatre Building



THEATER, STORE & OFFICE BUILDING
 ON WOODWARD AV. BIRMINGHAM, ALA.

OFFICES AND STORES FOR RENT

Ready For Occupancy September 1st

WE wish to announce that on September 1st, the New Theater building at South Woodward avenue will be ready for occupancy. We are now offering for rent, a number of the stores and offices which have not as yet been leased.

The building consists of eleven stores and twenty-one offices, modern in every respect and highly desirable as business locations. Each office and store is conveniently laid out and well lighted; the offices are 17½ feet by 21 feet; the stores average 17½ feet by 60 feet.

With the opening of the new theater within a month or so, these stores and offices will be the center of an unusual activity and interest. Their desirability will be ideal. We advise business men to investigate this opportunity at once.

Each store has an attractive front, parking space in back of building and a rear shipping entrance. Front entrance is made to each directly from the street. Windows have been arranged to permit ideal display space. RENTS ARE UNUSUALLY REASONABLE. Heat is furnished.

Offices are well lighted and entrance is gained through eight foot corridors. Well finished in every detail, these rooms will be divided to suit tenant. For certain businesses, the offices can be adapted for suite arrangement. The rents for these offices are very moderate and include heat and janitor service.

Plans and arrangements of stores and offices should be inspected as soon as possible. Many of the offices and a number of the stores have been leased already and an opportunity to secure rental may be lost by too long a delay.

Stores and Offices will be a 'Community' in themselves

It is planned that this new office, store and theater building will serve Birmingham as a distinct shopping center. The number of stores and offices permits a wide variety of businesses and will evolve, undoubtedly, into a "community" themselves. This, of course, will make any business situated there, a desirable and strategic location. The theater's proximity is an obvious desirability and will lend an impetus to window shopping and purchasing. We suggest that the following enterprises would prove practical:

*Gift Shop Drug Store Jeweler Shoe Store Electrical Store
 Men's Haberdashery Grocery Store Meat Market Tailor Shop*

For further information see Rental Department or make inquiry from

Briggs Commercial & Development Co.

1800 BUHL BUILDING

DETROIT, MICHIGAN

PHONE RANDOLPH 6785