

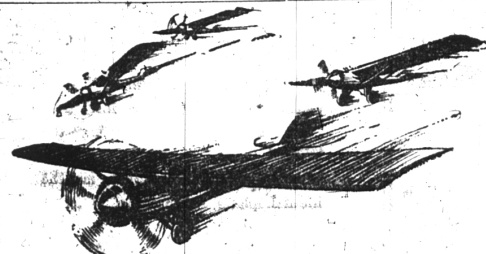
NOTHING BUT

It isn't just luck. Our Used Cars are so consistently good because we handle NOTHING BUT.

EVANS-LEGG MOTOR CO.
119 South Woodward Ave. Phone 301
Birmingham, Mich.

A USED CAR IS ONLY AS DEPENDABLE AS THE DEALER WHO SELLS IT

Tell Your Merchant You Saw His Advertisement in THE ECCENTRIC



Through ESSEX thousands know
The Ride that is like flying
with the exclusive high-compression anti-knock motor that turns waste heat to power

All eyes turn to the new Essex Super-Six whose vivid brilliance of performance reveals in a single ride a smoothness and quiet, a road-skimming ease and soaring exhilaration that is actually like flying. Greater in power, more versatile in all performance, larger, roomier and more beautifully appointed, it gloriously earns its richer reward in even greater popularity than its predecessor.

ESSEX Super-Six

2-Passenger Speedabout \$700 4-Passenger Speedster \$835
Coach \$735 Coupe \$735 Sedan \$835
All prices f.o.b. Detroit, plus war excise tax

Boughner Bros. Garage
134 S. Woodward Ave. Birmingham

Eccentric Classified Ads Bring Results—Phones 11 and 12

NASH

Leads the World in Motor Car Value

New Models
3 New Series • New Lower Prices
Thrill the Country
July Sales 71% Greater
than Biggest Previous July

—and August sales will drive far beyond the largest previous August in Nash history.

Everywhere the greatest crowds in Nash history are thronging to view the new Nash models. Here on display are the finest, fastest, smoothest riding cars Nash ever developed.

In design and finish they are the smartest looking cars you have ever seen, regardless of price.

Their performance in the way

of speed and power-smoothness is a revelation.

They are cradled on springs built by a new secret alloy steel process that give Nash cars a riding luxury you have never known before.

If as yet you have not been to our showroom, come at once. See all that Nash offers you in the way of matchless quality and value at the new LOW prices ranging from \$865 to \$1990 f.o.b. factories.

BELL BROS.

NASH SALES AND SERVICE

122 E. Maple

Phone 709

MOTORS From Road & Showroom

OFFICIALS PRAISE NEW DODGE SEDAN

Acceleration And Speeds Play Large Parts in Performance Of New Model

New standards of performance and beauty are to be found in Dodge Brothers latest sedan, introduced in July as the first body type in an entirely new line of four cylinder cars. In presenting this sedan Dodge Brothers have come to the fore with a car so new,

and so advanced in engineering features that it has been accorded a most enthusiastic reception by the public. It is said. Orders for approximately \$1,250,000 of the sedan were received within two days after it was introduced and since that time business has been so great that production has been increased.

The new car is advertised as the fastest four in America, giving mile-a-minute performance with surprising ease and smoothness and acceleration from 0 to 25 miles per hour in less than 7 seconds through gears, officials say. So great is the power of its engine in relation to the weight of the car that it is never forced to labor and is, therefore, free from the roughness and pounding that result from strain.

Steering and parking ease have been accomplished by placing ball bearings in the steering spindles as well as in the steering gear itself. The car will make a full turn in a 38-foot street.

Springs on the new car are exceptionally long, constituting over 85 per cent of the total wheel base. This gives it the longest spring base of any car selling for \$1,000 or less.

The body construction is not only remarkable for its rounded beauty but for its high quality and strength. It is the car selling for less than \$1,000 which has a full metal roof, rail and bolt moulding integral with the body. In the deluxe sedan long lines, blended curves, perfect proportions and smart coloring combine to create an impression of beauty such as few light cars ever achieve.

The interior is done in expensive mohair, with roller curtains, head linings and carpet to match. The windows are of the latest French style, glass with chrome trim, and such fixtures as door light, door handles, window regulators and roller rail are heavily nickel-plated. The unique instrument board features a 70-mile speedometer and is finished in the new "crinkle" effect.

PUBLIC CONTINUES OAKLAND HERALD

Telegrams Said To Reflect Welcoming Accorded New G. M. C. Product

PONTIAC, Mich., Aug. 10.—The Oakland Motor Car company's success in creating an automobile which satisfies the highest American conception of what a car should be is reflected in hundreds of telegrams from Oakland dealers all over the country this week. Tens of thousands have viewed the new Oakland All-American Six, and hundreds have driven it, since its presentation a week ago. They are enthusiastic in their praise of its splendid appearance, its surprising power, its roomy restfulness, and its generally sparkling performance.

Just as, with the Pontiac Six, Oakland engineers sought to create a car adapted to the needs of the world's most exacting users—the American public—so with the Oakland All-American Six these same engineers have carried that policy to its logical conclusion. The new Oakland is sturdy and powerful, with a man-size six-cylinder engine. Roominess is assured by its 117-inch wheelbase, and its 135-inch over-all length. Like the Pontiac Six, it is peculiarly adapted to the requirements of Americans, whether their need be transportation in congested city traffic or speedy and comfortable negotiation of great distances such as only America offers. In neither Pontiac nor Oakland is there the slightest stunting of power, room or riding ease, nor any trace of foreign influence.

The Oakland All-American Six line which the public is welcoming so cordially is bigger, more beautiful, and more powerful than ever. Its 212-cubic inch displacement engine achieves new heights of smoothness, partly through a new non-detaching cylinder head and partly through improvements in the famous Oakland harmonic balancer. A notable refinement in which Oakland is pioneering is the mechanical fuel pump, which replaces the vacuum tank and insures fuel supply under all conditions.

Continuation of the trouble-free service for which Oakland always has been famous is assured by a new oiling system, the features of which are a self-priming pump, an extra large strainer screen, and an ingenious provision for circulation of oil to the instant the engine starts. There is new beauty appeal about the Oakland All-American Six, comparable with its performance appeal. Rich new colors in Duco make the exterior resplendent, while luxuriously tailored upholstery insures both beauty and comfort within.

The American Eagle, emblem of the Oakland All-American Six, is associated with the same tradition as dictated the choice of Pontiac's name and Indian emblem. Conformity to all that is fine and strong in American tradition not only suggested these emblems but was built by the Oakland Motor Car Company into the products for which they stand. The record-breaking rapidity with which Pontiac was swept to the crest of public favor has already attested the degree to which Pontiac performance fulfilled its creators' promise, and the response from the public today suggests that history is about to repeat itself, with Oakland.

Advocates of a strong national defense believe that preparations are cheaper than reparations.

CRAWFORD NAMED CHEVROLET HEAD

Occupies Newly Created Position Of Assistant Chief Engineer Of Company

O. E. Hunt, vice president in charge of engineering of the Chevrolet Motor company, today announced the appointment of J. M. Crawford, for 21 years an automotive engineer, to the newly created position of assistant chief engineer of the Chevrolet Motor company. Mr. Crawford assumed his new duties the latter part of July.

Prior to joining the Chevrolet organization, Mr. Crawford was for six years chief engineer for a well-known builder of medium-priced cars. His new position with Chevrolet, the largest manufacturer of gear shift cars in the world, is regarded in automotive circles as a distinct and well-merited promotion growing out of his extensive, practical knowledge of motor car building.

He entered this field in 1906 and has literally grown up with the industry, serving with various automobile manufacturers, chief of which was the old Chalmers Motor Company, from that date to the present time.

Mr. Crawford was born and reared at Indianapolis, Ind. Upon his appointment to Hunt's assistant he moved to Detroit, Mich., where his headquarters are located in the main office of the Chevrolet Motor Company in the General Motors building.

Turning from the hospitable welcoming of American aviators, French editors and politicians have resumed their habitual wordy denunciation of one another. Editor Leon Daudet of the Royalist newspaper L'Action Francaise got off to a good start by printing this: "Premier Raymond Poincare and his ministers are turkey gobblers, the laughing stock of the universe, the shame of France."



More cooling spins at lower costs on Goodrich Silvertowns

Cool night air feels mighty good when you "step on the gas" after a hard, hot day—and it feels twice as good when you know you're riding at the lowest cost per mile!

More mileage, built into Silvertowns, gives you a lower cost on your tires, for pleasure or business. Strong, flexible sidewalls—tough, road-gripping tread—long life in every ounce of rubber—that's the answer to tire economy!

BRING YOUR TIRES TO EVANS for V-U-L-C-A-N-I-Z-I-N-G

New Low Prices

—Work Guaranteed

Evans Tire Shop

282 S. Woodward Ave.

Phone 1354

Birmingham, Mich.

Goodrich Silvertowns

BEST IN THE LONG RUN

for Economical Transportation



Consistent Progress and Proved Design—
have resulted in the most

Amazing Quality in Chevrolet History!

The vast resources of General Motors and the tremendous manufacturing facilities of Chevrolet have made possible this amazing quality.

GENERAL MOTORS

The Chevrolet Motor Company is a unit of the General Motors Corporation—the greatest automotive organization in the world. Utilizing the vast resources and engineering facilities of the organization, Chevrolet enjoys, to the fullest extent, those manufacturing advantages—a fact that is largely responsible for Chevrolet's amazing value.

PROVING GROUND

The General Motors Proving Ground comprises a track of 1244 acres. The entire track is criss-crossed with roads of every type—from a concrete straightaway and speed track, to a deservingly clay bank. There are hills that vary in steepness from a slight incline to 36%. Tests of Chevrolet cars are under constant test at the Proving Ground—driven day and night under every conceivable condition of road and load.

TWELVE GREAT FACTORIES

Chevrolet cars are manufactured in 12 great factories, located at strategic shipping points throughout the country. Every factory is equipped with the most advanced modern machinery known to engineering—performing every manufacturing operation with scientific precision and maximum efficiency.

Today's Chevrolet embodies the most amazing quality in Chevrolet history—the result of 14 years of consistent development and improvement—building, at all times, a modern automobile for transportation needs.

In carrying out this policy of consistent betterment, the Chevrolet Motor Company has profited greatly from its close association with the General Motors Corporation—the world's greatest producer of automotive products.

The General Motors Research Laboratories, under the direction of the most famous scientific staff in the

automotive industry—the General Motors Proving Ground, the greatest outdoor testing laboratory in the world—

—the General Motors engineering staff—

—the vast General Motors resources—

—all have been constantly utilized in making Chevrolet the world's finest low-priced automobile!

Regardless of the car you are now driving, regardless of when you expect to purchase your next car—come to our showroom and see today's Chevrolet!

The COACH \$595

The Roadster \$625

The Coupe \$625

The 4-Door Sedan \$695

The Sport Coupe \$715

The Sedan \$745

The Imperial \$780

The Sedan \$795

The Sedan \$895

The Sedan \$995

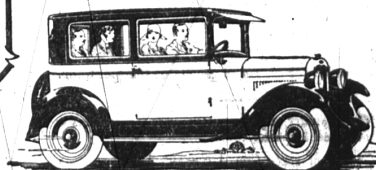
All prices f.o.b. Flint, Michigan

Excludes Chevrolet

There include the lowest handling and

loading charges

available



Tracy & Cotton, Inc.

Open Nights and Sundays—505 N. Woodward
BIRMINGHAM, MICH.

QUALITY AT LOW COST