

MERCHANTS FORM BASEBALL TEAM

Workingmen To Practice 3
Evenings A Week; Games
On Sundays

A Birmingham merchant baseball team, which begins practice May 1 on west Maple road, is being organized today by J. D. LeFave, proprietor of the barber shop in the Woodward Block. Practice, which will be held three evenings a week, is open to every local working man, according to Mr. LeFave. "Games will be played on Sundays, the only time merchants will have free," he said.

The Other Chap Says Something

MEN WITH VISIONS

In his speech before the house of representatives on February 22nd, President Coolidge said of George Washington: "He has come to personify the American republic. He had a national mind." In support of this he told how Washington was not only great in war, but was great in industry, farming; was an expansionist; saw the possibility of a west to east waterway which we are now discussing.

The sentence that attracted us in the president's speech was "He had a national mind." That's an important qualification—being able to think in terms larger than our immediate surroundings. It is a quality that is not being cultivated by a great many men of ability.

While self-preservation may be the first law of mankind, no neighborhood, no town, no county, state or nation ever went far if its people were all self-centered.

Washington was one of the few men of his day who could see the possibilities of this country. He recognized the potential wealth that lay here untouched. His work as a surveyor took him into the unexplored parts of the country. He visioned the rich valleys filled with happy people and pictured the growth of a nation founded on equality. He invested in this land beyond the mountains. He owned 8,000 acres and at one time had 3,000 acres under cultivation.

In the nearly two centuries that have elapsed since wonderful things have happened. Yet it took a greater stretch of imagination for Washington to vision a power-

LEADS CRUSADE



DR. P. RAYMOND POWERS

Dr. Powers, staff member of the department of evangelism, Methodist Episcopal Church of America, will lead a crusade here at the Methodist Church from April 19 to May 8. The campaign is part of the congregation's celebration of the hundredth anniversary of the church.

ful nation in place of a few struggling, half-starved colonies, than it does today to look into the possibilities of the future.

The farmers of this section need to have more men in every neighborhood who are community-minded in the same sense that Washington had a national mind. Every town needs to have a group of men who can vision the beneficial results of co-operative effort.

Too many of us look upon community projects through the individual knot-hole. We see only what we see. It is one thing to be visionary and another to have vision. Nothing worthwhile was ever accomplished unless someone first had sufficient imagination to picture it.—The Clinton County (Mich.) Republican-News.

THE POWER TO BLESS

Speaking from the pulpit of

INCREASED ACTIVITY SEEN IN FRANKLIN

George Wellington Smith Takes
Over Real Estate Agency in
Community.

George Wellington Smith, who has specialized in the development of Franklin properties, has just taken over the exclusive sale of Franklin Village, which was placed on the market a few months ago.

Mr. Smith announces the sale of four building sites during the past week.

Franklin Village was planned and landscaped by J. French Pauldock. The wide, well-built, winding roads suggest the beauty of the English suburb.

are," he said, "only stewards of what we possess. If this be a common word, we have a right to hold her responsible for it. What is she doing with her power?"

We believe the women of the United States and of other progressive nations everywhere can answer this question without embarrassment or evasion. They are shaping affairs with which they are in contact along lines more nearly conforming to truly democratic ideals than the large affairs of the world have heretofore been shaped. The results of this purposeful activity are observable everywhere, in state and national government, in directing the affairs of towns and cities, in the schools and colleges, in the homes, in the churches and their manifold activities for good. And it is equally true that this influence is becoming more and more appreciable in the shaping and conduct of international relations.

... serious line comes intricate and intertwine now as never before. There is no border across which this influence does not extend. It is absolutely according to individual, community and national standards that international standards are established and maintained. Finally, in any analysis, we come back to the point where it is necessary to admit the individual responsibility of the citizen, first as a constructive and vital unit in the mass, and then as a voter.

The opportunity of the women of today, in whatever land they may reside, is to bless the world and its people by unselfish service and by adherence to high and worthy ideals. This opportunity entails a present responsibility of women if they may be said, in the words of a familiar owner: "Thou can't not to thy place by accident."

It is the very place God meant for thee!—(Christian Science Monitor.)

Try an Eccentric Classified Ad

Demonstration Week



TO EVERY LADY who enters our store Thursday, Friday or Saturday of this week, we will present a valuable gift free of charge—nothing to purchase.

FREE !!
Enough Paint For 2 Coats to
Cover Your House
Be Sure to Ask About This!

Specials three days only

The best 3-foot
STEPLADDER
Obtainable—Brace
under each step—**73c**

CLIMAX WALL-
PAPER CLEANER **8c**
Per can—

AUTO SPONGES
BIG
ONES **25c**

BRILLO
Steel Wool
One Lb. **30c**

SPECIALS
ON ARTISTS'
MATERIALS

UNPAINTED
FURNITURE

LOTS OF ENAMEL
LOTS OF VARNISH

COME IN IF FOR ONLY A MINUTE!

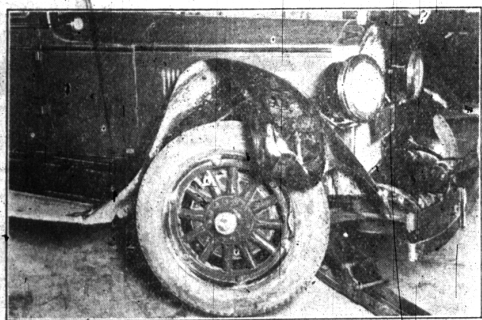
Birmingham Wallpaper Company

135 W. Maple Ave.

Phone 394

Let Us Write Your Insurance!

Wolverine Mutual Means Prompt Adjustment



This firm gives prompt attention and personal service to every loss reported

This Might Happen To You!!

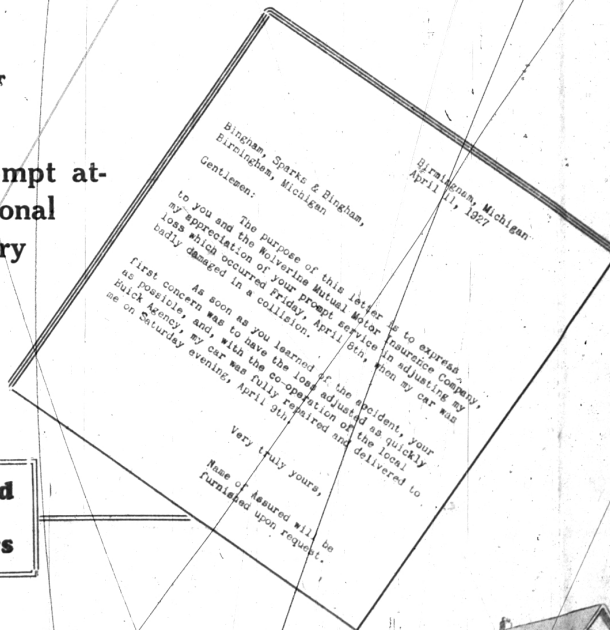
Reported wreck Friday, April 8, at 3 p. m.
Fully repaired next day, April 9, at 6 p. m.

Adjustment included the following:

NEW PARTS
One Front Fender
One Rear Fender
One Side Apron
Tire
Inner Tube
One Front Spring
One Hub Cap

REPAIRED PARTS
One Front Spring
Running Board
Rim
Brake Housing
Head Light
Axle
One Door Panel
Front Bumper

Fully Adjusted
within 11
working hours



BINGHAM, SPARKS & BINGHAM

132 South Woodward Avenue

Telephone 985

