

FALL BEST PLANTING TIME FOR FLOWERS

Pontiac Nursery Head Gives Advice On Garden Work Best Done In This Season.

By William Esig
The fall planting season for Evergreens is here. Early fall planting of evergreens enables them to benefit from the fall rains and to become established before winter sets in.

Another great advantage of planting evergreens in the fall, is the opportunity now afforded for making selections in lawns and for planning the plantings to bring the best results.

Flowers For All.
Even people so lowly as the box car tenants of the railroads appreciate a garden. Their square or round beds, edged with bricks, stone and glass, located in the most impossible places of vegetables and flowers, give evidence that the love for a garden is born in the race and will find expression when given the slightest opportunity.

Peonies In The Fall.
Remember, fall is the only really good time to plant Peonies. Spring planting may be done in an emergency, but it is very hard on the plants.

Hupmobile's August Biggest In History

Hupmobile's August sales were the largest for any corresponding month in its history. Shipments for the month exceeded those for the best previous August by 19 per cent.

Runs 25,000 Miles; Service Under \$15

A distance of 25,160 miles in a Hupmobile Eight roadster with less than \$15 in service expenditures, is the mark of I. R. Goodwin, district manager at Columbus, Ohio, for the Cedar Rapids (Iowa) Engineering Co.

NOTICE OF MORTGAGE SALE

Default having been made in the terms and conditions of a certain mortgage, executed by Mount Royal Land Company, a Michigan Corporation, to John B. Lacey and Hermine Lacey, his wife, mortgages, dated the fifth day of January, A. D. 1925, and recorded in the office of the Register of Deeds for the County of Oakland, State of Michigan, on the fifteenth day of April, A. D. 1925, in Liber 326 of Mortgages, on page 208, on which mortgage there is claimed to be due at the date of this notice, August 1, 1926, the principal and interest the sum of Three Thousand One Hundred (3,100) Dollars and 100/100ths of a Dollar, together with an attorney's fee of Thirty (30) Dollars, and costs as provided in said mortgage, and no tender proceeding in or out of court has been instituted to recover the money secured by said mortgage.

Heavy Fine Imposed On Drunken Driver

Ernest Henderson, R. F. D., Birmingham, gardener, a fine of \$100 was imposed by Judge Floyd S. Buck in Justice Court here after being found guilty of driving a car while drunk. Henderson took the fine in preference to 60 days in jail. He was arrested by Officer Myers who said Henderson took a zig zag course through Birmingham streets.

STATE OF MICHIGAN—Circuit Court for the County of Oakland, Chancery.

Edith J. Gifford, Plaintiff, vs. George D. Harbrick, Defendant.
Ann W. Blakeslee, Frank Blakeslee, Mary Ann E. Adams, Ella E. Adams, Mary A. E. Adams, Defendants.

At a session of said court held in the Court House in the City of Pontiac, on the 19th day of July, 1926. Present, Honorable Frank L. Covert, Circuit Judge.

Let The Eccentric be "Your Printers"

QUALITY + ECONOMY = Satisfaction.
The best of both worlds is yours when you print with The Eccentric. Our printing is done on the best of equipment and by the most skillful workmen.

NOTICE IS HEREBY GIVEN, that by virtue of a certain mortgage, executed by Mount Royal Land Company, a Michigan Corporation, to John B. Lacey and Hermine Lacey, his wife, mortgages, dated the fifth day of January, A. D. 1925, and recorded in the office of the Register of Deeds for the County of Oakland, State of Michigan, on the fifteenth day of April, A. D. 1925, in Liber 326 of Mortgages, on page 208, on which mortgage there is claimed to be due at the date of this notice, August 1, 1926, the principal and interest the sum of Three Thousand One Hundred (3,100) Dollars and 100/100ths of a Dollar, together with an attorney's fee of Thirty (30) Dollars, and costs as provided in said mortgage, and no tender proceeding in or out of court has been instituted to recover the money secured by said mortgage.

STATE OF MICHIGAN—In the Circuit Court for the County of Oakland, In Chancery.

Lloyd A. Gifford, Plaintiff, vs. Clarence G. Chantry, Defendant.
In pursuance of a decree of the Circuit Court for the County of Oakland made and entered on the first day of June, A. D. 1926, in the above entitled case, I, the undersigned, a Circuit Court Commissioner of the County of Oakland, shall sell at public auction or vendue to the highest bidder at the Court House in the City of Pontiac, in said County of Oakland, on the twentieth day of September, A. D. 1926, at 11:00 o'clock in the forenoon, that day, those certain lands and premises situated in the City of Royal Oak, and described as:

REAL ESTATE GROWTH ATTRIBUTED TO AUTO

"Many articles have been written which couple the great advancement in real estate values with the introduction of the automobile," states E. F. Everett, president and general manager of the Hickenbacker Motor Company.

"But I often wonder if people stop to realize that it is the improved motor car that has very materially improved real estate. By that I mean that during the last five or 10 years so many new features have been added to automobiles to make them safer, surer, sounder and simpler—(hence so much more continuously used)—that it is the engineering development of motor cars that has developed real estate."

STATE OF MICHIGAN—The Probate Court for the County of Oakland, Chancery.

At a session of said court held in the Probate Office in the City of Pontiac, in said County, on the 17th day of September, A. D. 1926. Present, Hon. Ross Stockwell, Judge of Probate.

Let The Eccentric be "Your Printers"

QUALITY + ECONOMY = Satisfaction.
The best of both worlds is yours when you print with The Eccentric. Our printing is done on the best of equipment and by the most skillful workmen.

STATE OF MICHIGAN—In the Circuit Court for the County of Oakland, In Chancery.

Lloyd A. Gifford, Plaintiff, vs. Clarence G. Chantry, Defendant.
In pursuance of a decree of the Circuit Court for the County of Oakland made and entered on the first day of June, A. D. 1926, in the above entitled case, I, the undersigned, a Circuit Court Commissioner of the County of Oakland, shall sell at public auction or vendue to the highest bidder at the Court House in the City of Pontiac, in said County of Oakland, on the twentieth day of September, A. D. 1926, at 11:00 o'clock in the forenoon, that day, those certain lands and premises situated in the City of Royal Oak, and described as:

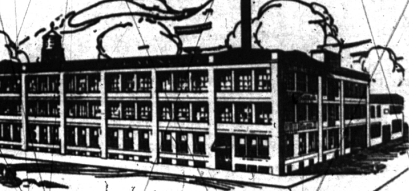
The thief of time--and money

PROCRASTINATION in anything contemplated in your life is bound to be expensive. "Putting off 'till tomorrow" the purchase of a fire insurance policy may cost your home with all its furnishings. Safeguard your possessions with a reliable concern.



THOS. H. COBB INSURANCE AGENCY
Phones 948 and 949
IN FIRST STATE SAVINGS BANK BLDG.
Birmingham -- Mich.

Tell Your Merchant That You Read His Advertisement in THE ECENTRIC



READY FOR FALL?

GET all the children's things washed and ready for the opening of school and start the fall season with a clean house. Your curtains, your blankets, your wash rugs—send them to us.

Work Left Before 10:00 a. m. Will Be Ready For You the Next Afternoon
OFFICE OPEN DAILY - 8 to 6 O'CLOCK SATURDAYS UNTIL 7 P. M.
Use Drop Box At All Hours

Palace Model Laundry
EAST MAPLE AVENUE Opposite Baldwin Library
WE OPERATE 27 SUCH AGENCIES ALL WITH OUR OWN EMPLOYEES

Fleming Coal Co.

149 E. Maple Ave.
BIRMINGHAM
Phone 220

An Important List of Improvements

Following a year of unprecedented engineering progress, Dodge Brothers announce another important list of improvements for their complete line of motor cars.

No one who contemplates the purchase of a car should fail to investigate the impressive nature and scope of these improvements at the earliest opportunity.

Table listing car models and prices: Touring Car \$825, Coupe 925, Sport Roadster 974, Sedan 976, DeLuxe Sedan 1125. Delivered.

Evans-Jackson Motor Co.
119 S. WOODWARD AVE.
PHONE 301 BIRMINGHAM, MICH.

DODGE BROTHERS MOTOR CARS

DANCE - At - OAKLEY PARK
South Shore, Commerce Lake
WEDNESDAY AND SATURDAY NIGHTS
Continental Ramblers' Orchestra
PRIZES GIVEN EACH NIGHT

NEW Sleeping Car SERVICE
Pontiac to Chicago
A special Pontiac-Chicago sleeping car service is now available for the convenience of travelers to Chicago and west.
Central Time 11:00 P.M.
Lv. Pontiac 7:50 A.M.
Ar. Chicago 7:50 P.M.
\*Car ready for occupancy 9:00 P.M. (10:00 P.M. City time). Breakfast on International Limited before arrival Chicago.
Lv. Chicago 10:05 P.M.
Ar. Pontiac 6:04 A.M.
(Chicago made a City time)
For Reservations Telephone
C. C. OSBORN, Ticket Agent - Grand Trunk Station - Phone 100
GRAND TRUNK RAILWAY SYSTEM

Four Per Cent Penalty
Now Due on Village Taxes
NOTICE is hereby given that Village Taxes for the fiscal year 1926 have been payable at the office of the Village Treasurer since July 1, 1926.
One per cent penalty from August 1 to September 1, 1926, inclusive. Four per cent penalty from September 1 to October 31, 1926, inclusive. No taxes accepted by Village Treasurer after October 31, 1926, as the tax roll will be in the hands of the County Treasurer at Pontiac for collection. All taxes unpaid after October 31, 1926, will bear the four per cent penalty plus three-quarters of one per cent for each additional month or fraction thereof.

Charles E. Plumstead
Treasurer, Village of Birmingham.
Mahaffey's Service Station
S. Woodward at Frank

Fill your tank here
Mahaffey's Service Station
S. Woodward at Frank
INDIAN GAS - HAVOLINE OIL
MOBIOL and PENNZOIL
Complete Alemite and Greasing Service
Mahaffey's Service Station
S. Woodward at Frank