

**'PRINCESS FLAVIA' AT CASS THEATER**

That romance is not dead yet is originally proven at the Princess Flavia, Detroit, where "Princess Flavia," in the second week of its limited engagement of three weeks, is playing to huge outpourings of music lovers who are also romance lovers as heartily attested by the enthusiasm of their applause.

No doubt playgoers of this city will recall that "Princess Flavia" was the outstanding musical success during its year's run at the Century Theatre, New York, where it played to capacity houses at \$1.00 a seat. When Messrs. Shubert and Mr. E. D. Stair were putting their weary heads for a suitable attraction for the opening of their exquisite new playhouse it was only natural that they should choose the loveliest operetta of all times, "Princess Flavia."

The only obstacle was the heavy expense attached to this particular production. The owners of the Cass Theatre did not feel they would want to charge their patrons \$2.00 for the Detroit engagement, so after many conferences Messrs. Shubert decided to make an exception in this case and they are presenting the play absolutely intact with the original New York cast headed by Howard Marsh and Evelyn Herbert, 50 equally important players, at \$3 a seat. "Princess Flavia" is not booked in any other city in Michigan. The last performance in Detroit will be given on Saturday evening, Dec. 2nd.

Romance actually flares in this gorgeous and colorful production, the splendor of which in costumes and settings indeed in all its effects, is truly dazzling.

**BOARD OF EDUCATION**

Birmingham, Michigan Sept. 2, 1936. The regular meeting of the Board of Education was held in the office at 8 p. m.

Present: R. J. Coryell, Leigh Lynch, Fred V. Quorton, J. W. Parry and Ray A. Palmer. The minutes of the previous meeting were approved.

Moved by Lynch supported by Quorton that a contract be made with Taylor Bros. to pave the west side of Chester Street in front of the Baldwin school. Carried.

Moved by Lynch supported by Quorton that posts and ropes be provided to protect children who are crossing Oakland Avenue to the Adams school playground. Carried.

Supt. Vitto was directed to prepare a map of the District and an empty house and prospective building survey was ordered.

Moved and seconded that the bills be allowed. Carried.

ham, Pavement Tax, 745.77; R. B. Appell, Bldg. Repair, 216.05; Grand Trunk Ry. Car Service, 187.14; Grand Trunk Ry. Car Service, 187.14; 53; First National Bank, Coupons, 137.50; Birmingham Transfer, Cartage & Freight, 43.01; Leonard Elec. Co., Installing Telephones, 2,072.20; Warren Webster & Co., Boiler repairs, 11.53; The Chas. A. Stralinger Co., Bldg. repair, 6.90; The Athletic Supply Co., Supplies, 2.15; D. Van Nostrand Co., Book, 1.30; Simonds Saw & Steel Co., Manual Tr. supplies, 22.00; Schroeder Paint & Glass Co., Bldg. repair, 30.35; The Cincinnati Tool Co., Manual Tr. supplies, 55; Kardex Hand Sales Corp., Supplies, 10.90; Robt. Keller Ink Co., Supplies, 49.73; The Tablet & Ticket Co., .66; Standard School Fixtures Co., Furniture, 46.00; First National Bank, Pay Roll, 1,487.15; Century Chemical Products, Janitor supplies, 30.49; Oliver Machinery Co., Supplies, 2,007.60; D. B. Wilkinson, Bldg. repair, 345.77; American Type Founders Co., Supplies, 509.25; The Birmingham Eccentric, Printing, 141.95; Birmingham Wall Paper Co., Bldg. repair, 42.64; Dav Fleming, Unloading coal, 124.85; Hall & McCreey Co., Supplies, 13.

64; Mich. Brush Mfg. Co., Supplies, 108.04; Hartwick Lumber Co., Bldg. repair, 23.55; Ginn & Co., Supplies, 14.52; Royal Oak-Birmingham Express, Cartage, 8.40; McBride Hdwe. Supplies, 175.82; Grinnell Bros. Furniture, 12.00; Chas. J. Shain, Supplies, 234.05; Bell Bros. Garage, Bldg. repair, 1.00; First National Bank, Coupons, 218.00; Thomas Charlies Co., Supplies, 805.39; Shaw-Walker Co., Furniture, 53.20; A. C. McClurg & Co., Books, 249.00; R. B. Appell, Bldg. repair, 255.20; Leonard Elec. Co., Supplies, 324.62; Laurel Book Co., Supplies, 44.67; H. P. Paint & Glass Co., Bldg. repair, 13.30; First National Bank, Coupons, 475.00; People's State Bank, Bonds & Int., 3,250.00; Canceled; Slann Sign System, Letters & Figures, 8.34.

Moved and seconded to adjourn. Carried.

R. J. Coryell, President. Leigh Lynch, Secretary.

When Mme. Marie Zellianier, a Paris dressmaker, was operated on a small pair of scissors was found in her stomach.

Wait Lines. Higher waistlines, with fullness concentrated toward the front, are commented upon as significant details of many of the most interesting models shown at the recent openings.

For some time there has been a tendency to deviate from the straight lines that have dominated for so long a period. One saw evidence of this in the brief vogue of flared effects last season. Gradually a softer and more feminine silhouette is being evolved which is to take the place of ultra simple straight effects.

models shown at the recent openings. For some time there has been a tendency to deviate from the straight lines that have dominated for so long a period. One saw evidence of this in the brief vogue of flared effects last season. Gradually a softer and more feminine silhouette is being evolved which is to take the place of ultra simple straight effects.



**When are You Going to Place Your Coal Order ?**

**Decide right now to Order Your Winter's Coal Today from R. C. MOULTHROP LUMBER COMPANY**

WHEN you stop to think of it, there's really no reason why you shouldn't fill up your Coal bin right now. You'll get better delivery, better service—and your fuel worries will be over.

Call us up today! Get our prices! Then let us fill your bin now!

**R.C. Moulthrop Lumber Co.**  
LUMBER COAL AND BUILDERS SUPPLIES  
BIRMINGHAM, MICHIGAN

**Sport News**  
- By -  
**Radio**  
Our Place Will "Broadcast" The Dempsey-Tunney Fight World's Series and Local as Well As College Football

Sodas  
Lowpops  
Candies  
Cigars, Etc.  
Newspapers  
Magazines

**Bailey's Smoke Shoppe**  
103 W. MAPLE In Peck's Old Store

**"It Pays to Look Well"**

The Fitch Shampoo is more than a shampoo. Applied with our super-service it is a scientific scalp treatment.

Super-service is our motto—which means the very latest scientific equipment, standard, toilet preparations, clean towels and absolute sanitation.

Ladies' Hair Cutting Our Specialty

**Deer's Barber Shop**  
"The Family Shop"  
117 E. MAPLE AVENUE

MAY TAG--MAY TAG--MAY TAG-- MAY TAG--MAY TAG--MAY TAG-- MAY TAG--MAY TAG--MAY TAG-- MAY TAG--MAY TAG--MAY TAG--

# And Now Another Shipment

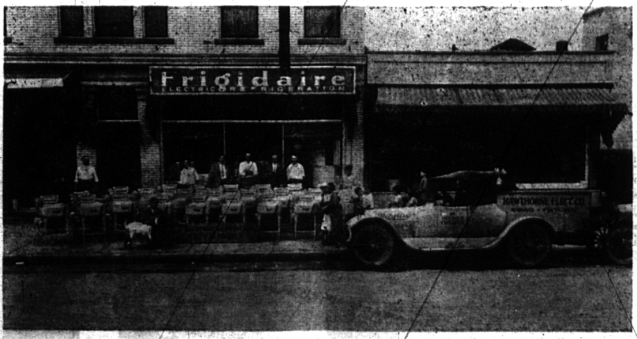
## A MACHINE A DAY HAS BEEN OUR SALES AVERAGE

Last week we received another shipment of the famous Maytags---the third shipment in three months! And what is the reason?

### 9-Reasons for World Leadership-9

HERE ARE SOME OF THE REASONS

1. Washes faster.
2. Washes cleaner.
3. Largest hourly capacity. Tub holds 21 gallons.
4. Most compact washer made—takes floor space only 25 inches square.
5. Cast aluminum tub can't warp, rot, swell, split or corrode—cleans itself.



HERE ARE SOME OF THE REASONS

6. Easily adjusted to your height.
7. Clothes can be put in or taken out with the washer running.
8. All metal wringer. Self adjusting. Instant tension release.
9. Electric motor for wired homes—Gasoline motor where no electricity is available.

Phone 299 For A Free Washing Next Wash Day Or Any Day You Wish!

Gather together the biggest and dirtiest wash you can find. Then—call for a Maytag Gyroform Washer. Find out for yourself how the Maytag's exclusive principle of water turbulence washes twice as fast as others—how you can average 50 pounds of clothes per hour and not have to hand-rub your cuffs, collars and wristbands—how you can wash a tubful of ordinary clothes in 3 to 7 minutes. We want you to see for yourself how carefully it handles dainty things.

Phone 299 For A Free Washing Next Wash Day Or Any Day You Wish!

# HA WTHORNE ELECTRIC COMPANY

124 W. Maple

Phone 299

MAY TAG--MAY TAG--MAY TAG-- MAY TAG--MAY TAG--MAY TAG-- MAY TAG--MAY TAG--MAY TAG-- MAY TAG--MAY TAG--MAY TAG--