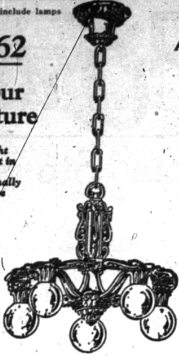


Prices do not include lamps

\$17.62 and your old fixture

will place this beautiful 5-light Riddle Fixture in your home. Regular nationally advertised price \$23.50



As advertised in The Saturday Evening Post

Your old lighting fixtures are worth money if traded in on Riddle Fixtures

You have probably wondered how to replace your present lighting fixtures with up-to-date equipment and at the same time secure something for your old fixtures. Our trade-in allowance plan is the solution. On every fixture traded in we allow 25% of the purchase price on a new Riddle Fixture. Take advantage of this offer as so many others are doing. It's a most remarkable opportunity.

HAWTHORNE ELECTRICAL CO.

Phone 299 124 West Maple Ave.

Authorized Riddle Dealer

VILLAGE OFFICIALS CLAIM ANNEXATION IS ECONOMIC PLAN

(Continued From Page 1) operation of the whole district, and such cooperation can only be secured by consolidation under municipal government. "It does not appear to be necessary to discuss separately the various properties now considering annexation. The same arguments will cover each individual case and the benefits derived are the same. The village of Birmingham is increasing in area and will have a corresponding increase in valuation while the cost of municipal government will increase very little. This of course tends to lower the tax rate and to keep it at a permanently lower level. Proper construction of utilities will mean an eventual saving of large sums of money to all concerned. The annexed territory will benefit in many ways and the additional village tax that it will pay will be more than offset by improvement in living conditions, decrease in insurance rates, lower cost of water and an eventual large saving in cost of sewage disposal. "It is the belief of the Village Commission that there can be no doubt of the benefit to the entire area in a consolidation within reasonable limits, at the very earliest moment, under one municipal government." Signed, C. J. SHAIN, President DAVID H. LADD, DAVID H. LADD, S. O. WYLLIE BELL, Commissioners

"HIGH SCHOOLS ARE SOCIAL CESSPOOLS;" WORLD FULL OF HOGS

(Continued From Page 1) ion?" asked Dr. Holderby. "Are we becoming too material in our ideals? The early homes of our fathers were built not only for the home life, but they also served as places to carry on the work of the State, and of the Church. Christianity received its first devaluation when men began to build public places of worship instead of using their homes in which to grow spiritually. Parents Are Sour Grapes "If the youth of today set our teeth on edge it is because their parents have eaten sour grapes. The world needs a religious revival. The strength of the Protestant religion is in the home family altar. The strength of the Catholic religion is in its confession. When family altars have ceased to be a part of our homes, then Protestantism has utterly failed. We need to make of every father a mediator between his family and God. "Today there is too much jazz and too little Jesus. There was a time when singing Home, Sweet Home really meant something; later it became the symbol to stop dancing at midnight; today it is lost in meaningless jazz. People Are Like Hogs "Many people today are like hogs; can't gaze skyward unless they are on their backs. It seems to me that America today feels that it needs no God as long as it has a bank balance. The crimes committed by society, and played up in our newspapers today, are as nothing compared to the crimes of omission that are committed by men and women in their relationship to Christian ideals. One generation can wipe out our national life, declared Dr. Holderby, who added that "if the present youth continues it will actually do this very thing in 20 years. You people who live out here, amidst this beautiful country, these lovely hills, are too indifferent toward religion to perpetuate that Christian teaching must become a part of the knowledge presented to our youth. Dr. Holderby, who is an ordained Presbyterian minister, was brought to Birmingham through the efforts of the local First Presbyterian church.

STATE OF MICHIGAN, COUNTY OF OAKLAND. vs. George B. Hartwick, a Circuit Court Commissioner for Oakland County, Plaintiff, and Albert C. Brockman, Defendant. Summons having been issued in this cause and having been returned unexecuted, and appearing by affidavit on file that the defendant's address is unknown. It is ordered, that said defendant appear at the court room of the undersigned at the office in the City of Royal Oak, Oakland County, Michigan, at nine o'clock a. m. Eastern Standard Time, on the 13th day of April, 1926, to defend the complaint filed in this cause, or judgment will be entered by default; and that this order be served on the defendant in a certain land contract for the sale of premises described as: Lot numbered 186 of the Bronx (Meadow-creek) Subdivision of the East half (5 1/2) of Section Twenty (20) Town 1, North Range 19 E. Royal Oak Township, Oakland County, Michigan, according to the plat thereof recorded in the office of the Register of Deeds for Oakland County, Michigan, in Liber 13 of Plats on page 27. GEORGE B. HARTWICK, Circuit Court Commissioner, Oakland County, Michigan.

STATE OF MICHIGAN, COUNTY OF OAKLAND. vs. George B. Hartwick, a Circuit Court Commissioner for Oakland County, Plaintiff, and Isabel Carson and Roland Z. Carson, Defendants. Summons having been issued in this cause and having been returned unexecuted, and appearing by affidavit on file that the defendant's address is unknown. It is ordered, that said defendant appear at the court room of the undersigned at the office in the City of Royal Oak, Oakland County, Michigan, at nine o'clock a. m. Eastern Standard Time, on the 13th day of April, 1926, to defend the complaint filed in this cause, or judgment will be entered by default; and that this order be served on the defendant in a certain land contract for the sale of premises described as: Lot numbered 191 of the Bronx (Meadow-creek) Subdivision of the East half (5 1/2) of Section Twenty (20) Town 1, North Range 19 E. Royal Oak Township, Oakland County, Michigan, according to the plat thereof recorded in the office of the Register of Deeds for Oakland County, Michigan, in Liber 13 of Plats on page 27. GEORGE B. HARTWICK, Circuit Court Commissioner, Oakland County, Michigan.

STATE OF MICHIGAN, COUNTY OF OAKLAND. vs. George B. Hartwick, a Circuit Court Commissioner for Oakland County, Plaintiff, and Isabel Carson and Roland Z. Carson, Defendants. Summons having been issued in this cause and having been returned unexecuted, and appearing by affidavit on file that the defendant's address is unknown. It is ordered, that said defendant appear at the court room of the undersigned at the office in the City of Royal Oak, Oakland County, Michigan, at nine o'clock a. m. Eastern Standard Time, on the 13th day of April, 1926, to defend the complaint filed in this cause, or judgment will be entered by default; and that this order be served on the defendant in a certain land contract for the sale of premises described as: Lot numbered 191 of the Bronx (Meadow-creek) Subdivision of the East half (5 1/2) of Section Twenty (20) Town 1, North Range 19 E. Royal Oak Township, Oakland County, Michigan, according to the plat thereof recorded in the office of the Register of Deeds for Oakland County, Michigan, in Liber 13 of Plats on page 27. GEORGE B. HARTWICK, Circuit Court Commissioner, Oakland County, Michigan.

STATE OF MICHIGAN, COUNTY OF OAKLAND. vs. George B. Hartwick, a Circuit Court Commissioner for Oakland County, Plaintiff, and Isabel Carson and Roland Z. Carson, Defendants. Summons having been issued in this cause and having been returned unexecuted, and appearing by affidavit on file that the defendant's address is unknown. It is ordered, that said defendant appear at the court room of the undersigned at the office in the City of Royal Oak, Oakland County, Michigan, at nine o'clock a. m. Eastern Standard Time, on the 13th day of April, 1926, to defend the complaint filed in this cause, or judgment will be entered by default; and that this order be served on the defendant in a certain land contract for the sale of premises described as: Lot numbered 191 of the Bronx (Meadow-creek) Subdivision of the East half (5 1/2) of Section Twenty (20) Town 1, North Range 19 E. Royal Oak Township, Oakland County, Michigan, according to the plat thereof recorded in the office of the Register of Deeds for Oakland County, Michigan, in Liber 13 of Plats on page 27. GEORGE B. HARTWICK, Circuit Court Commissioner, Oakland County, Michigan.

STATE OF MICHIGAN, COUNTY OF OAKLAND. vs. George B. Hartwick, a Circuit Court Commissioner for Oakland County, Plaintiff, and Isabel Carson and Roland Z. Carson, Defendants. Summons having been issued in this cause and having been returned unexecuted, and appearing by affidavit on file that the defendant's address is unknown. It is ordered, that said defendant appear at the court room of the undersigned at the office in the City of Royal Oak, Oakland County, Michigan, at nine o'clock a. m. Eastern Standard Time, on the 13th day of April, 1926, to defend the complaint filed in this cause, or judgment will be entered by default; and that this order be served on the defendant in a certain land contract for the sale of premises described as: Lot numbered 191 of the Bronx (Meadow-creek) Subdivision of the East half (5 1/2) of Section Twenty (20) Town 1, North Range 19 E. Royal Oak Township, Oakland County, Michigan, according to the plat thereof recorded in the office of the Register of Deeds for Oakland County, Michigan, in Liber 13 of Plats on page 27. GEORGE B. HARTWICK, Circuit Court Commissioner, Oakland County, Michigan.

For the best roasts you ever tasted



Special offer for limited time \$1.25 Regular price \$k75

SPECIAL OFFER MARCH 27th to APRIL 10th

"Wear-Ever" Aluminum

4-Quart Self-basting Kettle

RICH, juicy, tender, delicious roasts - without K water, without basting - and from the cheaper cuts of meat! That's what this "Wear-Ever" Aluminum Self-basting Kettle makes possible. Give yourself a treat! Place this kettle over your stove and let it do the basting for you. The kettle turns flame down low and puts on cover and let meat cook. In usual manner of this kettle you have a moist, succulent roast. The kettle is made of aluminum which holds heat and cooks from all sides as well as the bottom bottom over, through cooking. This kettle, also, is best for stewing, boiling, preserving. On one side of the second joint and EXCESSIVE dry portions of roasts, always choose aluminum instead of copper with the "Wear-Ever" trade mark. THE ALUMINUM COOKING UTENSIL CO. New Kensington, Pa.



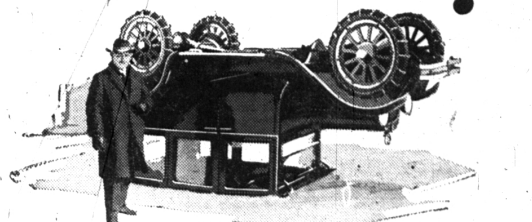
Another "Wear-Ever" Special Offer 2-qt. Aluminum Double-lipped Sauce Pan So strong you can stand on it 49c Regular price \$1.00

The handiest pan in your kitchen Get a couple for home or gifts

THE LINCOLN HARDWARE --- THE BIRMINGHAM HARDWARE 738 S. WOODWARD 100 S. WOODWARD

"YOU ARE ENTITLED TO KNOW THE FACTS" DODGE BROTHERS, INC.

Driver Escapes injury when all steel car turns upside down



An icy pavement between Piqua and Dayton, Ohio . . . traffic complications . . . and the car shown above plunged through a wire fence and turned completely over.

"The driver," reads the report, "only found it necessary to operate the window crank in the left closed door and crawl out. He had not received a scratch." Lucky motorist to have been driving a Dodge Brothers all steel sedan! Imagine what would have happened, under similar circumstances, to a motor car with a body of wood - and to the driver! Every automobile body should now be all steel just as every sleeping car is now built of steel. All steel bodies are safer. Anyone knows that Steel doesn't splinter. Steel doesn't burn. Steel is tough and strong - the modern ship metal - the modern bridge and building metal. That's why Dodge Brothers built the first all steel touring car eleven years ago. Six first all steel closed car four years ago and this year pioneered again in further perfecting all steel construction. And remember that while nearly all types of motor car bodies appear to be all steel, most of them are simply frames of wood covered by a steel shell - a fragile substitute for the sturdy construction common to Dodge Brothers product. Protect yourself - and family - with steel. Demand all steel automobile bodies. They will stand up under impacts that would crush the average body to splinters. And by substituting slim, strong steel columns for bulky wooden corner posts, they almost double driving vision - a safety improvement of transcendent importance. Then there are Dodge Brothers dependable quick-action brakes to protect you. And a chassis possessing more pounds of drop springs and costly alloy steels, in proportion to total weight, than any other car built, regardless of price.

The car will be a "four" Touring Car . . . Coupe . . . Sedan . . . Excise Tax reduced effective NOW. No reason to delay your purchase.

EVANS-JACKSON MOTOR CO. 119 SOUTH WOODWARD AVE. PHONE 301 Birmingham, Michigan

DODGE BROTHERS MOTOR CARS

Look To The Future-

Misfortune sends no calling card! Have you protected those dependent loved ones in case of emergency or accident?

Protect Your Property THOS. H. COBB INSURANCE AGENCY Phones 948 and 949 IN FIRST STATE SAVINGS BANK BLDG. Birmingham -- Mich.

CANDY Specials For EASTER CHOCOLATE BUNNIES - CREAM EGGS CHOCOLATE EGGS BOXED CANDY IN EASTER WRAPPINGS Novelties in BASKETS - RABBITS - CHICKENS Bunte's - Whitman's - Gilbert's Chocolates SHAIN'S West Maple Avenue Birmingham, Mich. MISS E. J. BASSETT - MR. C. J. SHAIN - MR. G. E. COOK WE DELIVER - - - PHONE 61

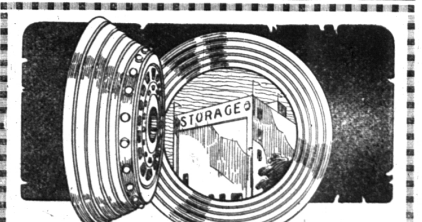
No Time For Delay

WHEN DEFECTIVE PLUMBING OR HEATING FIXTURES IN YOUR HOME GIVE WAY!

YOU NEED A PLUMBER'S SERVICES IN A HURRY, AND WE ARE HERE TO OFFER JUST THAT SERVICE.

PLUMBING AND HEATING INSTALLATION WORK A SPECIALTY

HENRY G. STOLL PLUMBING AND HEATING RES. PHONE 567 BUSINESS PHONE 180



PROTECTED

FIRE- We Give the MOVING PROOF "SERVICE" PACKING STORAGE You Expect CRATING SHIPPING

PONTIAC CARTAGE CO. "EXPERT MOVERS" 90 Orchard Lake Ave. Phone 395

FURNITURE REPAIRING BOX, SPRING and HAIR MATTRESSES UPHOLSTERING B. F. BROOKS Birmingham, Mich. 206 N. Woodward. PHONE 625-W