

# Your Electrical Needs

We are now established in our new store—all equipped to serve you electrically.

## HOUSE WIRING

Let us give you our estimate whether the job be large or small.

## HOUSEHOLD APPLIANCES

Universal and Hotpoint—We are agents for the Famous Royal Suction Cleaner

## Authorized Dealers for Riddle Fitments

COMPLETE ELECTRICAL REPAIR SERVICE

# Bird & Ryder

111 E. MAPLE Opp. Baldwin Library  
TELEPHONE 90

# STATE KEITH VODVIL

THEATRE  
PONTIAC

AND HIGH CLASS PHOTO-PLAYS

Complete Change of Program  
SUN. and THURS.  
Popular Prices

Matinee, 1:30 to 5 p. m.; Nights, 6:30 to 11 p. m.; Sats., Sundays and Holidays continuous.

NEXT-WEEK — SUNDAY TO WEDNESDAY

JACK PICKFORD and MARY BRIAN

In the Great Football Story

# Brown of Harvard

AND KEITH VODVIL

NEXT WEEK THURS. to SAT.

Adolphe Menjou, in "A Social Celebrity"

AND KEITH VODVIL

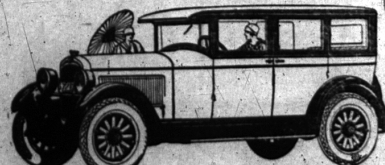
## This High Praise Your Guide

Everywhere within the industry—and among the public which really knows motor cars—the Hupmobile Six is spoken of as a definite engineering advance. It is smarter and smoother in action than any six at anywhere near its price. A real beauty, too, in line and in finish—a big-value, four-door, completely equipped sedan that looks and performs far above its price.

Advanced Features  
Oil Filter, Gasoline Filter, Remotely Easy Ignition, Upholstery in Latest Mohair, Easy Valve-Adjust, Special Gas Valve, Ventilation Windshield, Dual Gasoline Control, Strong, Solid Frame, Heavy Right-Handed Spring, Vibration Dampers, Mechanical Combustion Chamber.

Hupmobile Six  
Six-door, five-passenger, four-door, \$2145; Coupe, two-door, with rumble seat, \$2195; Touring, five-passenger, \$2225; Equipment includes 30 x 5.2 balloon tires, four-wheel brakes. All prices in Detroit, also various cities.

# HUPMOBILE SIX



FRED W. PARKS • R. E. RAMSEY

113 Brownell Street

PHONE 550

BIRMINGHAM

## The Other Chap Says Something

**SOFT SOAP PUNISHMENT**  
Without entering into a discussion for even a second of the merits or demerits of the Keeler school boy-whipping case, a few thoughts in relation to the mess may not be amiss. How well we remember, years ago, when we boys who were fanned in school, were recipients of a second flogging when the folks learned about the school mix-up. Nowadays we seldom hear of a lad having his bottom spanked by the school, m'am. A few light love-pats on his palm are all that the teacher becomes a bit rough—Oh boy, the entire community is enraged. Spanking is just isn't being done these days; it just isn't being done by polite school mamas, that's all. And the cat-o'-nine-tails, the hickory, the rubber hose, the woodened and all those former helps in the upbringing of the boys and girls are now raised with the horror of the days of the dark ages. Spare the rod and spoil the child is now foreign to our language.

But don't you think this change in punishment in our schools is parallel in the punishment meted out to criminals these days? Just think. Criminals are paroled wholesale; our school-boys are paroled wholesale. Judges have their sympathy and assistance; judges are appealed to to reduce sentences; prisons are made sociable and crime as far as punishment is concerned, amounts to "let him out." And, moreover, if John Smith, Lahser ave., is arrested for speeding his friends rush to his assistance to "get him out."

This idea of a man taking his just deserts when he is convicted of committing a crime and being sent to jail, we are sinking into the wishy-washy, softie soap frame of mind. No wonder little Willie can be spanked without it raising a hellabaloo.

"School m'am, keep your hands off my child or I'll get you," is not that which instills respect for authority—it openly sanctions disrespect for authority. Today this country is enveloped in widespread disregard for law, order and authority. Draw your own conclusions.—H. W. Babcock in Redford, (Mich.) Record.

## HI JOHNSON'S RICH LEGACY

The son of Senator Hiram Johnson of California died early this month. He left a will which, among other things, contained the following paragraph:  
"I make no provision for my son Hiram because I desire that my financial assistance from my estate; hence I leave him only my love and my pride in his success in life."  
That is a paragraph that might well be recommended to the attention of all fathers who are bringing up sons; particularly to those whose fathers whose sons have not yet passed the swaddling clothes stage, but who are already causing the inexperienced parent to wonder what is the best way to raise a boy. It is to be envied. To be able to look at one's son and his career, to take an honest pride in them and to realize that nothing more needs to be given them than the example of their own feet hereafter and acquit himself with honor; that is a fine crown for any father.

But a man has to earn it. And the earning begins early. It begins when the son goes through High School and enters college or goes to work. What a priceless asset the right kind of a dad in the home is. There are so many things for a boy to decide in those years; so many values to form, so many questions to answer; if he hasn't, it's pretty tough.  
After that the boy is given that whole lot—maybe lent a helping hand once in a while or chime in with a bit of advice occasionally, but that's all. The boy has to do it for himself.  
And if the father has done his part in those earlier years, there isn't much chance that the boy won't get along all right. He'll have the right background, the proper foundation. If the father has failed—well, maybe he will have cause to regret it in bitter sorrow.—Norman Hill in the (Cov. News.)

And then there are the later years, when the boy goes on through High School and enters college or goes to work. What a priceless asset the right kind of a dad in the home is. There are so many things for a boy to decide in those years; so many values to form, so many questions to answer; if he hasn't, it's pretty tough.  
After that the boy is given that whole lot—maybe lent a helping hand once in a while or chime in with a bit of advice occasionally, but that's all. The boy has to do it for himself.  
And if the father has done his part in those earlier years, there isn't much chance that the boy won't get along all right. He'll have the right background, the proper foundation. If the father has failed—well, maybe he will have cause to regret it in bitter sorrow.—Norman Hill in the (Cov. News.)

## PEOPLE'S COLUMN

The Editor—  
Birmingham Eccentric,  
Dear Sir:  
The Rev. D. H. Curry of the Benaville Ave. Congregational Church, said in the last issue of your paper that half the honey in Alabama is empty. Well no doubt the other half would be empty also, if it was not for the fact that the people have too much money tied up in their homes. I know that Mr. Humphrey and his Company have never given me what I paid for. But thank God we can now look forward to a bright future, for we are about done with Mr. Humphrey and his very lenient and generous Company.  
Yours sincerely,  
J. Boardman,  
146 West Clawson Rd.

FIRST NATIONAL BANK OF BIRMINGHAM, BIRMINGHAM, ALA.  
Notice to Stockholders. A Special Meeting of the Stockholders of this Association for the purpose of adopting a Resolution providing for a Board of eleven Directors for the remainder of the term and the transaction of such other business as may come before said meeting will be held pursuant to the By-Laws of the Association at the Banking Office of the Association in the Village of Birmingham, Birmingham, Alabama, on Saturday, July 10th, 1926, at 12 o'clock, P. M. The polls for passage of said Resolution will be closed at 10 o'clock, P. M. on the day of the meeting.  
ALBEMONT WHITEHEAD,  
Birmingham, Mich., June 10th, 1926. Adv.

## Hamellet To Open Refreshed Store

When Hamellet's open their remodelled store next Friday noon, James E. Birmingham will find itself the proud possessor of "one of the most modern and beautiful stores of its kind in Michigan" as Mr. Hamellet expresses it. The entire equipment will be supplied by up-to-date fixtures and many improvements will be installed.

It will take four days to make this alteration, the store being closed on Sunday night, June 13, until the opening on the following Friday. Hamellet has gone to a great expense in making this change, but with the aim "best in quality and service" before him, the change came willingly. The new equipment will be featured by the decorative finishings. All of the wall paneling and ornaments will be of solid black walnut with a polyurethane finish. For couples for individual privacy, ten booths or fourseats will number ten, each being comfortable and inviting. The lights and decorations are included in the equipment. New candy cases, wall cases and fixtures in general will be installed.

This remodeling will make Hamellet a ideal place for lunch and teas. Dishes have been ordered bearing the name of the establishment. The kitchen equipment will be completely changed and increased, permitting rapid service to customers. Harry Hamellet has been in the business for 22 years, 18 years in Detroit, and 4 years in Birmingham. He has made a name for himself in the home music candy, always maintaining the reputation of selling only "fresh and delicious" chocolates. This policy will be continued.

## New Books Added To Baldwin Library

Adult Fiction: Boylle "Strange" within the gates"; Chais "Splendid rascal"; Chase "Merry Christmas"; Dodd "Farthing spinner"; Ertz "Adventures"; Fulton "Green dragon"; Fletcher "Kang-hee"; Johnston "Great valley"; Lewis "Mantip"; Warner "Lily willow"; Wells "Vanity case"; Wharton "Herc and beyond"; White "Secret harbour".  
Non-Fiction: Commager "Phantom public"; Hobbs "Sailing ships at a glance"; Beer "Mauve decade"; Conrad "Last essays"; Lorenz "Mediterranean traveller"; Roffe "Satchel guide to Europe"; Coon "Old Touraine"; Henderson "Let's go in Paris"; Barbour "Let's go to Mussolini".

The Library has purchased the latest edition of Webster's New International dictionary with the reference history and an atlas of the world. This new edition has many new words and much reference material brought down to date.

**1794 BOOKS TAKEN FROM PUBLIC LIBRARY IN MAY**  
The May library report compiled by the librarian, Miss Marjorie Patch, gives the following interesting facts: Books circulated in May, 1925 1438 Books circulated in May, 1926 1794  
Gals  
Members registered in May 1925 13 Members withdrawn in May 1926 4  
Fines and due collected in May 1926 \$23.90  
Books added by purchase in May 1926 42  
Books added by gift in May 1925 58

## VILLAGE COMMISSION PROCEEDINGS

Regular meeting of the Village Commission called to order Monday, June 7, 1926 at 8 o'clock P. M.  
Present: President Shain, Commissioners Ladd and Bell.  
Minutes of meeting of June 2, approved as printed.

273.—Resident on Bloomfield Court, presented and asked whether he will have the water main changed and asphalt laid on the sidewalk.  
274.—Moved by President Shain that the following Resolution be adopted: Resolved that the Commission of the Village of Birmingham, inasmuch as it is expedient and advisable that copious water be supplied to the houses on Bloomfield Court, between curb to curb, be authorized to contract with the Village of Birmingham, to have the water main changed and asphalt laid on the sidewalk, between curb to curb, on Bloomfield Court, between curb to curb, with an estimate of cost of construction of such above named improvement and to be paid by the Commission.  
Year: Shain, Ladd and Bell. Nays: None.  
275.—Moved by President Shain that the following Resolution be adopted: Resolved that the Commission, by virtue of a resolution passed on this date, determined that it is expedient and advisable that concrete curb and gutter, and gravel with tar's treatment, be laid between curb to curb, on Bloomfield Court, in the Village of Birmingham, and.  
Whereas by virtue of the same resolution the Village Manager has prepared maps and diagrams of such above named improvement, and filed the same with this Commission, together with an estimate of the cost of same amounting to \$1400 for the improvement.  
Now be it resolved that all lots and parcels of land fronting and abutting on said Bloomfield Court, between curb to curb, shall constitute a special assessment shall be levied to defray the cost of the above named improvement, and that the Village of Birmingham shall bear 1/4 of the cost of the same, and that the lots and parcels of land fronting and abutting on said Bloomfield Court, between curb to curb, shall constitute a special assessment shall be levied to defray the cost of the same amounting to \$1400 for the improvement.

Now be it resolved that all lots and parcels of land fronting and abutting on said Bloomfield Court, between curb to curb, shall constitute a special assessment shall be levied to defray the cost of the above named improvement, and that the Village of Birmingham shall bear 1/4 of the cost of the same, and that the lots and parcels of land fronting and abutting on said Bloomfield Court, between curb to curb, shall constitute a special assessment shall be levied to defray the cost of the same amounting to \$1400 for the improvement.

**BIRMINGHAM SHOE SHINE PARLOR**  
112 1/2 E. Maple Ave.  
HATS CLEANED  
Our Work is Guaranteed  
GUS BAHUIMS

**PLEASE NOTE: A NEW GIFT SHOPPE HAS BEEN OPENED**  
Miss Detroit Frocks  
California Perfume Goods  
Sensations For Everyone  
and Every Occasion  
**Miscellaneous and Gift Shoppe**  
Phone 361  
132 N. Woodward

of land embraced in said Special Assessment District shall assessed for the cost of construction of said improvement, according to benefits derived therefrom, and that the special assessments shall be divided into five equal installments, payable annually, beginning with the date of construction of a Special Assessment District for the above purpose, and that the terms of said Special Assessment District shall meet at the Village Clerk's office in the Village of Birmingham on the day of the day of the month of May, 1926 at 8 o'clock P. M. to hear objections and objections to the proposed improvement, and the method of assessment thereon.  
Year: Shain, Ladd and Bell. Nays: None.  
276.—Moved by Commissioner Ladd that the following preamble and resolution be adopted: Whereas a hearing has been held on this date, and objections have been received by the Village of Birmingham on the proposed improvement, and the method of assessment thereon, and the Village Manager has prepared maps and diagrams of such above named improvement, and filed the same with this Commission, together with an estimate of the cost of same amounting to \$1400 for the improvement.  
Now be it resolved that all lots and parcels of land fronting and abutting on said Bloomfield Court, between curb to curb, shall constitute a special assessment shall be levied to defray the cost of the above named improvement, and that the Village of Birmingham shall bear 1/4 of the cost of the same, and that the lots and parcels of land fronting and abutting on said Bloomfield Court, between curb to curb, shall constitute a special assessment shall be levied to defray the cost of the same amounting to \$1400 for the improvement.

Whereas a hearing has been held on this date, and objections have been received by the Village of Birmingham on the proposed improvement, and the method of assessment thereon, and the Village Manager has prepared maps and diagrams of such above named improvement, and filed the same with this Commission, together with an estimate of the cost of same amounting to \$1400 for the improvement.  
Now be it resolved that all lots and parcels of land fronting and abutting on said Bloomfield Court, between curb to curb, shall constitute a special assessment shall be levied to defray the cost of the above named improvement, and that the Village of Birmingham shall bear 1/4 of the cost of the same, and that the lots and parcels of land fronting and abutting on said Bloomfield Court, between curb to curb, shall constitute a special assessment shall be levied to defray the cost of the same amounting to \$1400 for the improvement.

Whereas a hearing has been held on this date, and objections have been received by the Village of Birmingham on the proposed improvement, and the method of assessment thereon, and the Village Manager has prepared maps and diagrams of such above named improvement, and filed the same with this Commission, together with an estimate of the cost of same amounting to \$1400 for the improvement.  
Now be it resolved that all lots and parcels of land fronting and abutting on said Bloomfield Court, between curb to curb, shall constitute a special assessment shall be levied to defray the cost of the above named improvement, and that the Village of Birmingham shall bear 1/4 of the cost of the same, and that the lots and parcels of land fronting and abutting on said Bloomfield Court, between curb to curb, shall constitute a special assessment shall be levied to defray the cost of the same amounting to \$1400 for the improvement.

Whereas a hearing has been held on this date, and objections have been received by the Village of Birmingham on the proposed improvement, and the method of assessment thereon, and the Village Manager has prepared maps and diagrams of such above named improvement, and filed the same with this Commission, together with an estimate of the cost of same amounting to \$1400 for the improvement.  
Now be it resolved that all lots and parcels of land fronting and abutting on said Bloomfield Court, between curb to curb, shall constitute a special assessment shall be levied to defray the cost of the above named improvement, and that the Village of Birmingham shall bear 1/4 of the cost of the same, and that the lots and parcels of land fronting and abutting on said Bloomfield Court, between curb to curb, shall constitute a special assessment shall be levied to defray the cost of the same amounting to \$1400 for the improvement.

Whereas a hearing has been held on this date, and objections have been received by the Village of Birmingham on the proposed improvement, and the method of assessment thereon, and the Village Manager has prepared maps and diagrams of such above named improvement, and filed the same with this Commission, together with an estimate of the cost of same amounting to \$1400 for the improvement.  
Now be it resolved that all lots and parcels of land fronting and abutting on said Bloomfield Court, between curb to curb, shall constitute a special assessment shall be levied to defray the cost of the above named improvement, and that the Village of Birmingham shall bear 1/4 of the cost of the same, and that the lots and parcels of land fronting and abutting on said Bloomfield Court, between curb to curb, shall constitute a special assessment shall be levied to defray the cost of the same amounting to \$1400 for the improvement.

Whereas a hearing has been held on this date, and objections have been received by the Village of Birmingham on the proposed improvement, and the method of assessment thereon, and the Village Manager has prepared maps and diagrams of such above named improvement, and filed the same with this Commission, together with an estimate of the cost of same amounting to \$1400 for the improvement.  
Now be it resolved that all lots and parcels of land fronting and abutting on said Bloomfield Court, between curb to curb, shall constitute a special assessment shall be levied to defray the cost of the above named improvement, and that the Village of Birmingham shall bear 1/4 of the cost of the same, and that the lots and parcels of land fronting and abutting on said Bloomfield Court, between curb to curb, shall constitute a special assessment shall be levied to defray the cost of the same amounting to \$1400 for the improvement.

Whereas a hearing has been held on this date, and objections have been received by the Village of Birmingham on the proposed improvement, and the method of assessment thereon, and the Village Manager has prepared maps and diagrams of such above named improvement, and filed the same with this Commission, together with an estimate of the cost of same amounting to \$1400 for the improvement.  
Now be it resolved that all lots and parcels of land fronting and abutting on said Bloomfield Court, between curb to curb, shall constitute a special assessment shall be levied to defray the cost of the above named improvement, and that the Village of Birmingham shall bear 1/4 of the cost of the same, and that the lots and parcels of land fronting and abutting on said Bloomfield Court, between curb to curb, shall constitute a special assessment shall be levied to defray the cost of the same amounting to \$1400 for the improvement.

Whereas a hearing has been held on this date, and objections have been received by the Village of Birmingham on the proposed improvement, and the method of assessment thereon, and the Village Manager has prepared maps and diagrams of such above named improvement, and filed the same with this Commission, together with an estimate of the cost of same amounting to \$1400 for the improvement.  
Now be it resolved that all lots and parcels of land fronting and abutting on said Bloomfield Court, between curb to curb, shall constitute a special assessment shall be levied to defray the cost of the above named improvement, and that the Village of Birmingham shall bear 1/4 of the cost of the same, and that the lots and parcels of land fronting and abutting on said Bloomfield Court, between curb to curb, shall constitute a special assessment shall be levied to defray the cost of the same amounting to \$1400 for the improvement.

Whereas a hearing has been held on this date, and objections have been received by the Village of Birmingham on the proposed improvement, and the method of assessment thereon, and the Village Manager has prepared maps and diagrams of such above named improvement, and filed the same with this Commission, together with an estimate of the cost of same amounting to \$1400 for the improvement.  
Now be it resolved that all lots and parcels of land fronting and abutting on said Bloomfield Court, between curb to curb, shall constitute a special assessment shall be levied to defray the cost of the above named improvement, and that the Village of Birmingham shall bear 1/4 of the cost of the same, and that the lots and parcels of land fronting and abutting on said Bloomfield Court, between curb to curb, shall constitute a special assessment shall be levied to defray the cost of the same amounting to \$1400 for the improvement.

Whereas a hearing has been held on this date, and objections have been received by the Village of Birmingham on the proposed improvement, and the method of assessment thereon, and the Village Manager has prepared maps and diagrams of such above named improvement, and filed the same with this Commission, together with an estimate of the cost of same amounting to \$1400 for the improvement.  
Now be it resolved that all lots and parcels of land fronting and abutting on said Bloomfield Court, between curb to curb, shall constitute a special assessment shall be levied to defray the cost of the above named improvement, and that the Village of Birmingham shall bear 1/4 of the cost of the same, and that the lots and parcels of land fronting and abutting on said Bloomfield Court, between curb to curb, shall constitute a special assessment shall be levied to defray the cost of the same amounting to \$1400 for the improvement.

Whereas a hearing has been held on this date, and objections have been received by the Village of Birmingham on the proposed improvement, and the method of assessment thereon, and the Village Manager has prepared maps and diagrams of such above named improvement, and filed the same with this Commission, together with an estimate of the cost of same amounting to \$1400 for the improvement.  
Now be it resolved that all lots and parcels of land fronting and abutting on said Bloomfield Court, between curb to curb, shall constitute a special assessment shall be levied to defray the cost of the above named improvement, and that the Village of Birmingham shall bear 1/4 of the cost of the same, and that the lots and parcels of land fronting and abutting on said Bloomfield Court, between curb to curb, shall constitute a special assessment shall be levied to defray the cost of the same amounting to \$1400 for the improvement.



# Flashing Waters

The western sun sends you a flaming farewell as it slips behind the rim of hills, and you seem to be fitting in the midst of a sea of molten glass; the bugs and flies circle lazily over the water, when

Zing!—the flashing arch of a hungry bass . . . then the rippling circles widen on the water. . . .

Each year sees more and more people finding more and more places to fish. It's easier, with modern transportation, to get to more good spots. And as cities build up and civilization advances, lakes and rivers are less favorable for fish propagation. So, as it's said, many places are becoming "fished out."

Consumers Rower Company, in cooperation with your State Conservation authorities, is undertaking a work of benefit to all. At selected spots in such rivers as the Au Sable, Manistee, Muskegon, Kalamazoo and Grand, the Company is "planting" young fish—bass, perch, trout and their kind. Over 200,000 fish were planted last year; more than 600,000 will be set out this year.

So Consumers Power Company, besides turning waterpower to electricity that helps and serves nearly a million people, in 201 Michigan communities, is helping to make the rivers greater sources of pleasure for Michigan people.

# CONSUMERS POWER COMPANY

Summer's Finest



# TROPICAL WORSTEDS

Wonderfully light in weight, but what shape permanency is offered every wearer! Presented in both light and dark colors with plenty of patterns from which to select.

Two-Piece Suits \$32.00 UP

# CHARLES PECK

WEST MAPLE AVENUE PHONE 230

**CHICAGO**  
and Return  
**\$9.81 SPECIAL COACH For June 20 TRAIN**  
28th International Eucharistic Congress  
Lv. Birmingham 10:54 P. M. (Central Time, June 19th) 6:45 A. M. (June 20th)  
Ar. Chicago, 6:45 A. M. (June 20th)  
Returning, Special Train will leave Dearborn Station, Chicago, June 20th, at 8:40 P. M. (Central Time) (10:50 P. M. Chicago Time)  
Final Return Limit of Tickets—June 25th from Chicago on all regular trains.  
First Class Hotel Accommodations  
Rooms with bath \$3.00 per day and up per person during the Congress.  
For hotel accommodations, tickets and information apply to  
C. C. OSBORN, Ticket Agent, Grand Trunk Station  
Phone 199  
GRAND TRUNK RAILWAY