

Notice of Letting of Drain Contract and Review of Apportionment of Benefits

# ACACIA PARK DRAIN

NOTICE IS HEREBY GIVEN, That I, A. W. Spencer, County Drain Commissioner of the County of Oakland, State of Michigan, will on the

**Ninth day of August, A. D. 1926**

**At the Pierce Street School, Section 36**

in the Township of Bloomfield, in said County of Oakland, at Ten o'clock in the forenoon of that day, proceed to open bids for the construction of a certain Drain known and designated as "Acacia Park Drain," located and established in the Townships of Bloomfield and Southfield in said County.

Sealed bids will be received up to Twelve o'clock noon, Eastern Standard Time, August 7, 1926, at the office of the Oakland County Drain Commissioner, Pythian Bldg., Pontiac, Michigan, in said County.

Each bid must be accompanied by a certified check payable to the Oakland County Drain Commissioner, of ten per cent of the amount of bid, such check to be forfeited to the Acacia Park Drain District in case bid is accepted by the Drain Commissioner and bidder fails to furnish required bonds and enter into contract within ten days after acceptance of bid by the Drain Commissioner.

Said Drain is all in one Section, having the average depth of 18.5 feet. All stations are 100 feet apart.

In the construction of said Drain the following quantities and character of tile or pipe will be required and contract let for same:

- 970 ft. of 72 inch Monolithic or Rein. Concrete Pipe with lateral backing.
- 1,550 ft. of 72 inch Monolithic or Brick Tunnel.
- 1,350 ft. of 66 inch Monolithic or Brick Tunnel.
- 1,988 ft. of 60 inch Monolithic or Brick Tunnel.
- 2,554 ft. of 54 inch Rein. Concrete Pipe with lateral backing.
- 1,962 ft. of 48 inch Rein. Concrete Pipe with lateral backing.
- 1,638 ft. of 42 inch Rein. Concrete Pipe with lateral backing.
- 1,628 ft. of 36 inch Rein. Concrete Pipe with lateral backing.
- 880 ft. of 33 inch Rein. Concrete Pipe with lateral backing.
- 1,132 ft. of 30 inch Rein. Concrete Pipe with lateral backing.
- 330 ft. of 27 inch Rein. Concrete Pipe with lateral backing.
- 624 ft. of 24 inch Rein. Concrete Pipe with lateral backing.
- 365 ft. of 20 inch D.-S. Vitrified Pipe.
- 1,026 ft. of 18 inch D. S. Vitrified Pipe.
- 590 ft. of 15 inch D. S. Vitrified Pipe.
- 330 ft. of 10 inch Vitrified Pipe.
- 4,320 ft. of 10 inch Catchbasin Leads.
- 2,000 ft. of 6 inch Risers encased in concrete.
- 1 Outlet Structure.
- 2 Junction Chambers.
- 1 Type "A" Manhole.
- 2 Type "B" Manholes.
- 15 Type "C" Drop Manholes.
- 18 Type "D" Standard Manholes.
- 144 Standard Catchbasins.

Said job will be let as one Section in accordance with the diagram now on file with the other papers pertaining to said Drain, in the office of the County Drain Commissioner of the County of Oakland, to which reference may be had by all parties interested, and bids will be made and received accordingly. Contract will be made with the lowest responsible bidder giving adequate security for the performance of the work, in the sum then and there to be fixed by me, reserving to myself the right to reject any and all bids. The date for the completion of such contract, and the terms of payment therefor, shall and will be announced at the time and place of letting.

NOTICE IS FURTHER HEREBY GIVEN, That at the time and place of said letting, or at such other time and place thereafter, to which I, the County Drain Commissioner aforesaid, may adjourn, the assessments for benefits and the lands comprised within the "Acacia Park Drain Special Assessment District," and the apportionments thereof will be announced by me and will be subject to review for one day, from nine o'clock in the forenoon until five o'clock in the afternoon.

The following is a description of the several tracts or parcels of land constituting the Special Assessment District of said Drain, viz:

All that part of the Townships of Bloomfield and Southfield inclosed by the following described line:

Beginning at a point on the south line of Section 35, Bloomfield Township, 150 feet west of the S. E. corner of said Section 35; thence north parallel to and 150 feet west of the east line of said Section 35 to the center of Sections 35 and 36 or center line of Lincoln Ave.; thence east along the center line of said Lincoln Ave. to a point 83 feet west of the center line of Pierce Street; thence south 183 feet; thence east 83 feet to the center of Pierce St.; thence south along the center line of Pierce St. to the north line of Lots 35 to 57 of Oakland Villas Annex Sub.; thence east along the north line of said lots to the center line of Madison Ave.; thence south along the center line of Madison Ave. to the center line of Clawson Road on the south line of Section 36; thence south along the center line of Madison Ave. or Bath Road to the center line of Buckingham Ave.; thence southeasterly along the center line of Bath Road to a line midway between Arlington and Seminole Drives; thence southwesterly midway between said Arlington and Seminole Drives to a point 163 feet south of the center line of Beverly Road; thence west parallel to the center line of Beverly Road 2,750 feet to the 1/2 Section Line; thence north on the said 1/2 line 163 feet to the center line of Beverly Road; thence west 1,320 feet to the center line of Southfield Road; thence south along the center of said Southfield Road 660 feet; thence west 1,280 feet; thence south 300 feet; thence west 2,660 feet; thence south 360 feet; thence west 1,600 feet to a point 250 feet west of the west line of Section 2, Southfield Twp.; thence north parallel to the west line of said Section 2, 2,600 feet; thence northwesterly 700 feet to a point 250 feet west of the center line of Cranbrook Road; thence northeasterly 1,950 feet to the center line of the Beverly Road; thence easterly 200 feet; thence east 200 feet; thence north 1,750 feet to the north line of Section 2, Southfield Twp.; thence east 3,850 feet along the north line of said Section 2 to point of beginning.

Bloomfield Township at large.  
Southfield Township at large.  
County of Oakland, Southfield Road.

NOW, THEREFORE, All unknown and non-resident persons, owners and persons interested in the above described lands, and you, Robert Y. Moore, Supervisor, and John E. Wilson, Highway Commissioner of the Township of Bloomfield; Joseph Brooks, Supervisor, and Dan Hughes, Highway Commissioner of the Township of Southfield; G. Ross Thompson, Chairman of Board of Oakland County Road Commissioners, are hereby notified that at the time and place aforesaid, or at such other time and place thereafter to which said hearing may be adjourned, I shall proceed to open bids for the construction of said "Acacia Park Drain," in the manner hereinbefore stated; and also, that at such time of letting from nine o'clock in the forenoon until five o'clock in the afternoon the assessment for benefits and the lands comprised within the Acacia Park Drain Special Assessment District will be subject to review.

AND YOU AND EACH OF YOU, Owners and persons interested in the aforesaid lands, are hereby cited to appear at the time and place of such letting as aforesaid, and be heard with respect to such special assessments and your interests in relation thereto, if you so desire.

Dated this twenty-third day of July, A. D. 1926.

**A. W. SPENCER,**  
Drain Commissioner, for Oakland County, Michigan.

**B'HAM MERCHANTS LOSE TO OAKLAND MOTORS**

The Birmingham Merchants played a ragged game of baseball July 18 and were sorely beaten by the Oakland Motor Club nine by a score of 13 to 7. A large crowd saw the team make error after error, infield and outfield combining in running up a record of bad fumbles. Birmingham used three pitchers, but could not stop the slugging of the Pontiac team.

The line-up:

Birmingham	Oakland Motors
Grant, cf.	Reagan, cf.
Eger, cf.	Watrman, lf.
Moore, lb.	Moore, cf.
Smith, ss.	McGidley, 3b.
Groves, 3b.	Sappon, 1b.
Brad, c.	Harris, c.
Steele, 2b.	Danforth, 2b.
Schlaack, lf.	Wallace, rf.
Schubert, p.	Charles, p.
LeFave, 2b.	Hartley
Deman,	

**PLAYGROUND LEAGUE**  
Adams playground leads in the baseball standings of the three local playgrounds with a score of 1,000% having defeated all comers on during the last week. Hill school comes second with 500% while Barum trails last, having lost 5 out of 6 games. Two games daily at each playground is announced as the regular schedule, according to Van Winkle in charge.

The standings:

	W.	L.	Pct.
Adams	4	0	1.000
Hill	3	3	.500
Barum	1	5	.167

**TWILIGHT LEAGUE**

Last week's results still give the Franklin Methodist the lead in the league's standing with three teams tied for second place. Last week's results were as follows: Baptist, 4; Lutheran, 4; Methodist, 6; Lutheran, 5; Methodist, 1; Presbyterian, 6; Baptist, 3; F. Methodist, 10; Presbyterian, 6.

The standings:

	W.	L.	Pct.
F. Methodist	1	0	1.000
Lutheran	2	2	.500
Baptist	2	2	.500
Presbyterian	2	2	.500
Methodist	1	2	.333

The Franklin M. E. Sunday School baseball team defeated the Birmingham Fire Department in a double shift recreational league sandlot game Wednesday evening, July 14, at the Barum field, Franklin scoring 13 runs to Birmingham's 7.

The Fire Department substituted for the Baptist team and offered a little variety for the league's schedule. The young members of the Sunday School team were able to put everybody but Wm. Olsen, who featured the Fire Department's playing by a perfect batting average, scoring each time at bat.

Anderson, pitching for Birmingham, was sent to the showers in the third frame when Franklin pounded his offerings to all corners of the lot.

**Auto Concerns Cater To Women Drivers**

Among the many things for which man can give thanks to the feminine sex are the many notable improvements in recent years of what was originally man's own plaything—the motor car. It is not because she took an active part in devising the improved car that gratifies us, but because the equally important fact that she demonstrated the need and thereby motivated the inventions which brought the better car we have today.

"When formerly masculine drivers were in the majority the car maker did not need to extend himself to the limit to eliminate the labor of gear shifting, difficult steering and the like, for the ordinary male had the strength necessary to cope with any inconveniences," says Mr. Parks, Hummobile dealer. "If the engine gave satisfaction and service the man was content, so engineers directed their attention to the perfection of that mechanism."

"Then friend wife graduated from a rear seat driver and in a short time mastered the operator's task. But it was not as simple as it appeared—she soon found that she could not handle the car, talk to her passengers, powder her nose, and obey all traffic laws at the same time, while the car still retained its originality as a man's vehicle.

"Maximum comfort and safety for milady were not to be had unless the manufacturer changed some of the fundamental features. And so answering the feminine call, man's ingenuity quickly provided the improvements to keep the dainty feminine hand from extra exertion so that her days of driving would be a new recreation and one that she would enjoy." The Hummobile Eight was one of the first cars to include these newer features to facilitate operation of the car for the feminine driver.

The progress accompanying the woman's active participation in freedom is not solely limited to the details which lead to a better appearing car. It was, of course, expected that better upholstery and interior fittings with more graceful lines would be first and foremost, but their demands were far more reaching than that—and meant changing the fundamentals.

"At first improvement was directed toward an easier gear shift," Mr. Parks continues. "At an instance take the new Hummobile Eight. The clutch and transmission controls may be operated with the least effort. A light pedal pressure disengages the clutch and the gears slide into mesh easily and quietly and without any knowledge on the part of the driver as to what mechanical action is taking place. And the necessity of frequent change of gears is removed since the motor is now powerful and accelerates easily from low speeds.

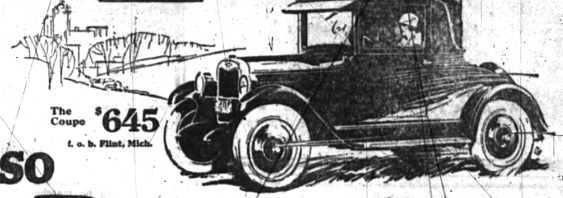
**HUMPHREY GIVEN UNTIL AUG. 1 TO GET WATER**

Beginning August 1, when the village will connect its water mains with recently annexed portions of Eco City, that part of Eco City situated south of the town line will have to look to the Leitch-Humphrey Co. for its water supply, Birmingham officials decided Monday night of last week. Manager Starn was directed to inform Mr. Humphrey that the village could not furnish water outside of its corporate limits. The entire Eco City subdivision is being supplied with water from the Leitch-Humphrey Co. private well at present.

Let The Eccentric be "Your Printer"

**Bricklaying and Plastering**  
Work Guaranteed.  
GIVE US A TRIAL  
**C. REDMAN - H. MOREY**  
1403 Colton, Detroit  
Tel. Hemlock 2136-W

for Economical Transportation



**SO Dependable**

- Touring \$ 510
  - Roadster \$ 510
  - Coach \$ 645
  - Four-Door Sedan \$ 735
  - Landau \$ 765
  - 1/2-Ton Truck (Chevrolet Only) \$395
  - 1-Ton Truck (Chevrolet Only) \$550
- Small Down Payment  
Convenient Terms  
All prices f. o. b. Flint, Mich.

With rugged strength where strength is needed—with an abundance of conquering power in its modern valve-in-head motor—with an up-to-date chassis design that includes every quality feature essential to safe, speedy transportation, the Improved Chevrolet provides a type of performance that has given it a worldwide reputation for dependability.

Ask any one of over a million Chevrolet owners—women, as well as men—and the answer will be—"It's smooth and powerful—easy to drive—economical to operate—and above all, so dependable!" Phone for a demonstration today!

**So Smooth—So Powerful**

**Tracy & Cotton, Inc.**

Open Nights and Sundays 505 N. WOODWARD Birmingham, Mich.

**QUALITY AT LOW COST**

**DeLuxe Sedan - Appointed in Excellent Taste**



Inspect the APPOINTMENTS of this beautiful car, and the PRICE will impress you as remarkably low.

Body finished in Maxine blue lacquer, black above belt line, with silver gray striping and lustrous black enamel shields and fenders.

Upholstery—silver gray genuine monar velvet with seat backs and cushions in the latest custom paneling.

Instrument board and window moldings in rich walnut, hardware in polished nickel, smartly designed for this vehicle.

Natural wood wheels with dagger spoke-strips. Steel disc wheels, in Maxine blue, optional at no extra cost.

Complete special equipment, including: polished nickel radiator shell and emblem, cowp lamps, cow ventilator, nicked, front and rear bumpers, heater, automatic windshield cleaner, and many others.

A smart, roomy and dependable closed car that will serve you for years at low cost.

**Evans-Jackson Motor Co.**

119 SOUTH WOODWARD AVE.  
PHONE 301 Birmingham, Michigan

**DODGE BROTHERS MOTOR CARS**

Telephone your NEWS to The Eccentric Phone 11 and 12