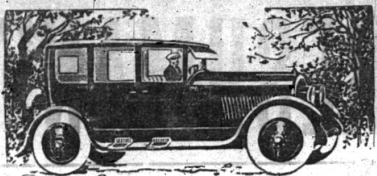


## Modern Auto Painting



Advise now is the time to lay up your car for a week, to have that new Auto painting done, as one month or so later we will be very busy and you will then have to wait your turn.

We apply the much advertised OPEX—MADE BY THE SHERWIN-WILLIAMS CO.—a company's goods that is to be depended upon as serviceable—not for a time of 3 to 6 months—BUT AS ADVERTISED!

### GLASS MOBILE ENCLOSURES

As thin as a sheet of glass—Bound in a band of steel.

**E. R. FARLOW**

Proprietor

209 Bowers St., Birmingham Phone 770

for Economical Transportation



C. E. Gambill, President of National Automobile Dealers Association, inspects greatest collection of testimonial letters ever received in one year by any automobile company.

This illustration is drawn from an actual photograph.

# 50,000 Testimonials!

**In 1925** Chevrolet had its greatest year.

During that time more than 50,000 testimonials were sent to the Chevrolet Motor Company by owners. This tremendous avalanche of evidence indicates the public appreciation of the car and its performance.

**In 1926** Chevrolet offers the Improved Chevrolet at New Low Prices—thus giving the public in greater degree than ever before—

### QUALITY AT LOW COST

The Touring Car	\$510	The Sedan	\$735
The Roadster	\$510	The Landau	\$765
The Coupe	\$645	½ Ton Truck	\$395
The Coach	\$645	1 Ton Truck	\$550

All prices f. o. b. Flint, Michigan

**Berger Sales Company**

102 N. Woodward Ave. Phone 851  
Open Nights and Sundays Birmingham, Mich.

IF WE DO IT, IT WILL BE "GOOD PRINTING."

## Health And Wealth Seen In Growth Of Community In 1925

(Continued from Page 8)

meeting with the board the following Monday when an ultimatum would be reached.

During the week about 100 university graduates, young local mothers, banded together for a course of study of the pre-school child. The study groups were to consist mostly of members of the local branch of the American Association of University Women, which organization all over the country was making the pre-school child a subject of study.

September 25, 50 property owners met in the Community House and formed the Northeastern Birmingham-Civic Association. A constitution and by-laws were adopted and a board of directors was elected. The following night they elected officers. Their purpose was to protect the rights and interests of property owners whenever necessary, to encourage public improvements, and to aid in every way to keep Birmingham a residence suburb.

The first railroad accident around Birmingham in several years occurred September 27 when three freight trains came together one mile north of the village. The first train, south-bound, pulled a drawbar just as it entered Birmingham and flagmen were sent out to stop the train but were not seen because of the heavy rain. Nearly an hour after the first train had stalled the second drove the nose of its engine half way through the caboose of the one ahead. This train sent a flagman back to warn the third train but the downgrade, fast rate of speed and the slippery rails prevented the train from stopping until it had teleported the caboose and pushed it into the freight car ahead of it. One of the engineers sustained a sprained back. Damage to the railroad property was placed at \$20,000.

September 28 the school board voted down the Merrill-Palmer branch proposition. The ballot stood four to one against the petition. A committee of Mr. Lynch and Mr. Viet was appointed to investigate further the school and when ready to make their report the committee from the A.A.W.U. would be called again to meet with the board for an open discussion.

A resolution governing the minimum size of any building lot in Birmingham was passed by the village commission September 28. No plat would be accepted in the future that did not create all lots at least 50 feet wide and 120 feet deep. No building permit would be issued in the future for the erection of a residence on any lot less than this size which was slated after the resolution went into effect. The decree was the result of the attempts of several people to split their lots so that two and even three houses could be built on one plot.

October  
After a short illness Captain John A. Bigelow, aged 87 years, died at his home on West Maple Avenue, October 1. He was born in Franklin and had spent his entire life there and in Birmingham, except during the time he was a Civil War veteran. His wife, who had died during the summer, was Isabelle Whitehead, a member of another pioneer family. He was survived by a son, Captain Mortimer Bigelow of California and two daughters, Mrs. Erwin Neff of Birmingham and Mrs. T. R. Donovan of Bloomfield Hills.

The contract for the new steel elevated tank was awarded to the Chicago Bridge and Iron Works at the commission meeting Monday night. The bid amounted to \$22,960. Only one other bid was received. The tank was to be completed within 125 days.

October 10 the second reunion of the "Little Red School House" was held at the home of Mr. and Mrs. D. W. Glize on West Maple Avenue which was the original school remodeled. George S. Hickey of Detroit, 80 years old, was the principal speaker and told his reminiscences of those early days when he was the professor at the school for a few years while he was studying for his degree from the University of Michigan which he received in 1863. Many of those who could not be present sent telegrams and letters.

A bid of \$15,350 by the Harmon-Ness Company of Indianapolis Indiana, for the well and pump that



### HERE'S A PICTURE OF CONTENTMENT

HE bought a farm and made it pay. He's regained his health and his family are well-fed and happy. We have a list of farms that you should look over.

COMPLETE farm, 80 acres, near Ortonville, modern house, 10x100 barn, orchard. A money maker for \$120,000. \$6000 down.

SACRIFICE for immediate sale, 240 acre dairy farm. Large house 20 rooms, barns 28x80 and 20x60, many outbuildings, excellent soil, a bargain at \$25,000. \$6000 down.

FARM of 60 acres near State road. 7-room house, two barns, silo. Only \$4500. \$2000 down.

CHICKEN farm, 20 acres near good town. 5 room house, barn, new hen house, orchard, 4 acre berries, two cows, two heifers, horse, 100 chickens. All for \$3,500. Terms.

Arthur J. Tuggey  
REAL ESTATE INSURANCE  
Tel. 367 McBride Bldg.

were to be installed in the southwest of the village was accepted at a special meeting of the commission held on October 14. The successful bid was one of five received. The work had to be done in 100 days. The well was to occupy 11 acres.

This week L. V. Belknap, county road engineer, working with the Governor on the Woodward avenue widening plan informed the commission that the line the establishment on the west side of Woodward avenue north from Oak street to Quanton road, the north limit at the village would remain. The commission gave its assent.

Two new stores opened in Birmingham on October 17. Schettler's drug store, in the Levinson building on the South Woodward avenue, had a formal opening and announced a complete drug line, including prescriptions in stock, electrical wares, and toiletries. Albert Phillips also opened his Cut Rate Meat Market in the last unoccupied store in the Blakelee building on West Maple avenue.

October 24 the Sixth Annual Bloomfield Open Hunt Races were held on the Hammond farm east of Bloomfield Center. A drizzling rain reduced the 10,000 expected to 1,000. Burgoright, a horse owned by B. L. Behr of Chicago, won the Grand Pointe Challenge Cup.

J. E. Valentine, the week of October 26, announced that the Buick Sales Company of Pontiac was about to open a service and sales room in Birmingham on South Woodward avenue on the old Hall property.

(Continued to Supplement)



By listening to your son gets bright.

He is alert on every night. It keeps him out of company had. And makes a map of every lad.

PROMINENT educators have declared that the radio is not only an educational feature that should be installed in every home, but that it has a great moral influence. Make this your radio headquarters.

FOLLOW THE ADVENTURES RADIO BUG  
**LEONARD ELECTRICAL CO.**  
134-W. MAPLE AV.  
PHONE 223

## LUMBER



### HERE'S LUMBER THAT'S RECOMMENDED

FROM every point of view—durability and appearance—does our Lumber get the recommendation of users everywhere. Here's Lumber that comes to you as specified—first being examined before it reaches our yards, then afterward. That's double assurance as to its reliability.

SERVICE  
LIKE A FLASH

5 BIG YARDS  
**HARTWICK LUMBER CO.**

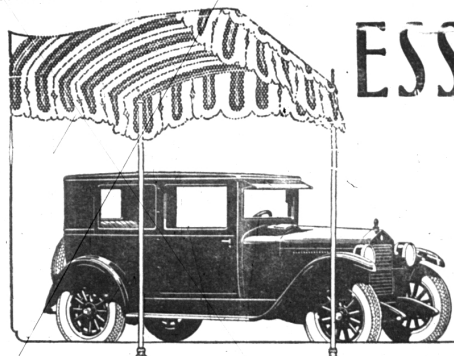
GEO. C. STEELMAN, WHOLESALE AND RETAIL  
Main Office  
Mr. Bham Office  
128 North Woodward Avenue  
Phone Empire 0686

PHONES:  
Office  
Bham 975  
Residence  
Bham 1121-M

## ESSEX COACH

**\$765**  
a "Six"

Built by Hudson Under Famous Super-Six Patents



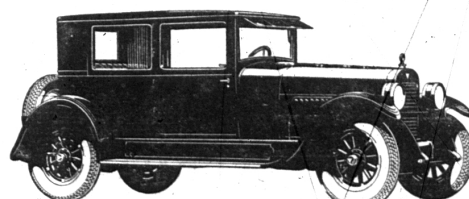
## HUDSON COACH

With the Famous Super-Six Motor

**\$1165**

Hudson Brougham \$1450  
Hudson 7-Pass. Sedan \$1650

All Prices Freight and Tax Extra



Six cylinders give smoother performance than any "Four." The Super-Six principle increases power. It lengthens car life and provides the advantages sought in more cylinders, larger motors and greater cost.

It is patented and exclusive to Hudson and Essex. No wonder Hudson-Essex are the world's largest selling "Sixes." These advantages have led to constant refinement in chassis and body, with the lowest prices in history.

What cars at any comparable price—"Fours" or "Sixes"—can give you so much in Performance, Comfort and Handling Ease—in good looks and pride of ownership?

World's Largest Selling Six-Cylinder Cars

**BOUGHNER BROS. GARAGE**

LOCAL DISTRIBUTORS

120 So. Woodward Ave.

Phone 70