

# Birmingham Eccentric

"For a Bigger and Better Birmingham"

BIRMINGHAM, OAKLAND COUNTY, MICHIGAN, THURSDAY, DECEMBER 9, 1926

\$1.50 PER YEAR—SINGLE COPIES 5c

PART THREE

OAKLAND COUNTY'S GREATEST WEEKLY NEWSPAPER

GOOD PRINTING DONE QUICKLY AT A REASONABLE PRICE—THAT'S THE BIRMINGHAM ECCENTRIC YOUR PRINTERY—Telephones 11 or 12

FORTY-NINTH YEAR—NO. 34

## LIBRARY BECOMES MORE POPULAR

New Circulation High Mark Set During November With 2,641 Books Loaned

Circulation at the Baldwin Library reached a new high mark during November, when 2,641 books were loaned, according to the report of Miss Blanche G. Kerns, librarian. This number is greater by 306 than the October circulation, which was the largest up to that time.

The list of borrowers was increased last month by 62, according to the report. The number of persons using the library increases continually, Miss Kerns said. Borrowers are almost equally divided between adults and children. Miss Kerns said, possibly with a slight margin in favor of adults. Among the books most in demand at the library at this time are Martha Ostenso's "Dark Dawn," Morley's "Romany Stain," Walden's "Harper John," Bromfield's "Early Autumn," Rose Macaulay's "Crews Train," Mary Roberts Rhinehart's "The Plays the Game," and Ruth Suckow's "Iowa Interiors."

## "Healthiest!"



Albert Hoppe, Iowa, and Janet Rushing, Sunflower County, Mississippi, pose for photographs after being judged the healthiest farm girls by doctors at the International Livestock Exposition, Chicago. Inset: Watren Griffin, 15, Oscar, Ky., chosen healthiest farm boy.

## SEAL SALE RETURNS TO AID T.B. SUSPECTS

County Association Head Tells of Work to Be Done With Proceeds.

Examination of tuberculosis suspects is an important part of the work of the Oakland County Tuberculosis association according to Miss Ruby Rogers, county nurse.

"Some time ago a suspected case was reported by a neighbor," she said. "The case happened to be a woman, the mother of three children. We had an examination made and found that not only the mother had the disease but the children also."

**Cure Treatment**  
"The mother was admitted to the Oakland County sanatorium and underwent treatment at the State sanatorium at Howell. Several months treatment built them together again at home now, the mother taking care of her children after the family, and the children are in school."

"Cases of this sort are also found through examinations made at clinics which are held in all parts of the county by the Oakland County Tuberculosis association. All of the work of the association is financed through the sale of Christmas seals. In fact, practically all anti-tuberculosis work in the United States is financed in this way. The few pennies paid by a child for the purchase of seals helps to swell the total amount received each year."

The seals are sold almost entirely by mail. Letters containing seals have been mailed throughout the country and returns are beginning to come in. The sale will continue until Christmas.

**Sweet Young Thing**  
"Teaching her to drive." "In case of emergency, the first thing you want to do is to put on the brake."  
"She: "Why, I thought it came with the car."

**CHIROPRACTIC**  
HEALTH  
HE thinks most clearly, Who is most healthy!  
Remember our new location  
Ovee Peak's Kin, Ko.  
Baker & Baker  
CHIROPRACTORS,  
Phone 1070 (1st Apt)

## Mr. Shain's Life

The Public Interests association has submitted to The Eccentric the following sketch of the life of Charles J. Shain, village president. The sketch follows:

The president of the village of Birmingham whose recall will be voted upon Thursday, Dec. 9, is Charles J. Shain, who was born in Bloomfield Township on Ridgegate farm, Quanton road. He graduated from the Birmingham High School and became a registered pharmacist in 1902. He succeeded Whitehead and Mitchell in business as a druggist in Birmingham in 1905 and has continued in business on west Maple avenue since that time. He was Worshipful Master of F. and A. M. No. 44 for the two years, 1910-11, and High Priest of R. A. M. No. 93 for three years, 1919-21-22. He was a member of the Board of Education for nine years, the last three years as treasurer, during which time the Baldwin High School was erected. He was president of the local Y. M. C. A. for many years, vice-president of the County Y. M. C. A. for several years under Judge F. L. Covert and at present is a director of the Oakland County Red Cross.

He was elected president of the village commission of Birmingham in March 1923 for a two-year term without opposition and was re-elected in 1925. During his term of office the village commission has secured at moderate cost, near the Latham well site, a greatly increased supply of water, has built an elevated tank to insure continuous fire protection, has enlarged the village area three times, has installed many miles of sanitary sewers and several miles of pavement and has provided a site and funds for a new village library, the construction of which will commence in March 1927.

Mr. Shain is one of the heaviest taxpayers in the village of Birmingham. His record above shows many years of unselfish service for the general welfare of the Birmingham community, since in no case has the salary of the office held been more than a mere stipend. In all cases he has been a liberal contributor of both time and money for the good of the organizations served.

The largest whistle in the world is on a new powerhouse at Akron, O., and can be heard from a distance of 23 miles.

**ROBERT APPELL**  
Painting  
Decorating  
Paperhanging  
Quality Work With The Best - OF - Material  
ESTIMATES  
CHEERFULLY  
GIVEN  
212 Elm St. Phone 486-R  
BIRMINGHAM

## CORN BORER ENEMY HAS SEVENTH SENSE

Precautions Being Taken to Wipe Out Destruction to Crops in County.

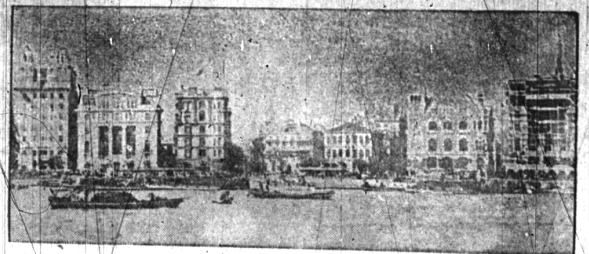
"The Exeristes Roborator seems to be endowed with a seventh sense," said Harold Vaughn, Oakland county agricultural agent, when discussing the "bugs" that are being bred by tens of thousands at the United States corn borer experimental station in Arlington, Mass., to fight the corn borer.

Mr. Vaughn has several specimens of Exeristes Roborators and Habrobracon Brevicornis, another enemy of the corn borer, whose predatory habits are reported to be as formidable as their names.

The Roborators resemble armed cockroaches, and have long dead-end stings which they drive right through the corn stalk when they locate a borer at work inside, and the precision with which they hit the hidden foe is remarkable, he said.

**Buries Eggs**  
Once the borer has been located the Roborator rolls a few eggs down into his body which they hatch out, eat all that is left of him.

## Foreign Residents Fearful as Cantonese Invade Hankow



Cantonese Soviet troops have invaded Hankow, China, 500 miles inland on the Yangtze river, or their victorious advance. And have sent forel, n residents. Photo shows general view of Hankow.

attacks the enemy in a different way. He locates the hole in the corn stalk made by the borer and then goes right in after him, and as he has a splendid appetite and is equipped with a deadly sting which he does not do to the borer is not worth mentioning, Mr. Vaughn says.

From Hungary  
Both parasites are foreigners, and have been introduced from corn borer experimental station, and as far as can be determined neither is harmful to crops.

Hordes of these little warriors recently were liberated at Monrovia, and were raised to maturity for the purpose of finding out if they can stand the rigors of a Michigan winter. They were incubated at the United States corn borer experimental station, and were raised to maturity on corn borer.

It is wise to get knowledge and learning from every source—be it a pot, a fool, a slipper, or an old slipper.

## COUNTY 'Y' HEADS MEET HERE TODAY

To Discuss Plans For Organization Work During Following Year.

Charles J. Shain, village president, and Clarence M. A. superintendent of schools, will represent Birmingham at the meeting of the executive committee of the South end Oakland County branch of the Y. M. C. A. at their regular monthly meeting tonight at the Chateau Tea Room. Robert Lynn, secretary of the executive committee of the county, will be present. Other representatives will be present from Royal Oak, Ferndale, and Farmington.

**Delayed**  
"Good heavens! Who gave you the black eye?"  
"A bridegroom for kissing his wife after the ceremony."  
"But surely he didn't object to that ancient custom?"  
"No—but it was two years after the ceremony."—London Herald.

# Join Xmas

# Our Club



**OUR CHRISTMAS CLUB is for everybody.** For men, women, boys and girls, in every walk of life. We have provided Clubs small enough for baby; large enough for the business or professional man or woman. It is so easy to join. Simply decide how much money you want next Christmas, then select the club below which fits your needs. A small amount each week for fifty weeks gives you a nice fat check at Christmas time.

THE CHRISTMAS CLUB is becoming increasingly popular as a means of accumulating money for other purposes, such as TAXES, INSURANCE, EDUCATION and MATURING OBLIGATIONS OF ALL KINDS. Make use of it in as many ways as you see fit.

— THE FOLLOWING TABLE EXPLAINS THE PLAN FULLY —

Increasing Club Plan		Even Amount Club Plan	
1c Club	Deposit 1c 1st week, 2c 2nd week. Increase 1c each week—in 50 weeks you have.....	25c Club	Deposit 25c each week—in 50 weeks you have.....
	\$ 12.75	\$1 Club	Deposit \$1 each week—in 50 weeks you have.....
2c Club	Deposit 2c 1st week, 4c 2nd week. Increase 2c each week—in 50 weeks you have.....	\$2 Club	Deposit \$2 each week—in 50 weeks you have.....
	25.50	\$5 Club	Deposit \$5 each week—in 50 weeks you have.....
5c Club	Deposit 5c 1st week, 10c 2nd week. Increase 5c each week—in 50 weeks you have.....	\$10 Club	Deposit \$10 each week—in 50 weeks you have.....
	63.75	\$20 Club	Deposit \$20 each week—in 50 weeks you have.....
10c Club	Deposit 10c 1st week, 20c 2nd week. Increase 10c each week—in 50 weeks you have.....	\$50 Club	Deposit \$50 each week—in 50 weeks you have.....
	127.50	\$100 Club	Deposit \$100 each week—in 50 weeks you have.....
			2,500.00
			5,000.00
Decreasing Club Plan			
You begin with the Largest payment and Decrease each week.			

Select The Club You Wish To Join  
**DON'T DELAY--JOIN TODAY!**

# First National Bank

Birmingham, Michigan

**SENIOR WASHINGTON GROUP**

# Pancake Breakfast

HIGH SCHOOL CAFETERIA, SATURDAY, DECEMBER 11, from 6 a. m. to 11 a. m.  
ADMISSION THIRTY-FIVE CENTS