

**Bricklaying and Plastering**  
Work Guaranteed  
**GIVE US A TRIAL**  
**C. REDMAN - H. MOREY**  
1463 Colfax, Detroit  
Tel. Hemlock 2136-W

## TUBERCULOSIS ASS'N ELECTS OFFICERS

Willis M. Brewer Selected As President  
Secretary's Report  
Is Read

Willis M. Brewer, county auditor, was elected president recently of the Oakland County branch of the Michigan Tuberculosis Association at a meeting held in Pontiac. Mrs. R. B. Hewitt was chosen first vice president; Mrs. Jean Ayers, second vice president; and Charles Mers, secretary and treasurer.

Directors were appointed and committee members named and Mrs. Zephia B. Hale, executive secretary, reviewed the work done by the organization during the past year.

According to her report one permanent clinic was established at Royal Oak while day clinics were held at Birmingham, Holly, Orionville, Leonard and Pontiac. Individuals examined at these numbered 248.

Directors and committee members named follow:

Directors: Willis M. Brewer, Pontiac; Frank L. Doty, Pontiac; Mrs. R. B. Hewitt, Birmingham; E. A. Lederle, Royal Oak; Joe Haas, Holly; Chas. J. Mers, Pontiac; Ruby Rogers, Pontiac; Mrs. W. B. Wilders, Orion; Cass Gittins, Milford; Mrs. A. W. Wilson, Ferndale; Dr. J. J. Murphy, Pontiac; Mrs. W. H. Jensen, Royal Oak; Mrs. Jean Ayers, Pontiac; Fred Beardsley, Oxford; Dr. C. J. Sutherland, Clarkston; E. D. Tyler, Pontiac; Wm. Leese, Orionville; Burton P. Daugherty, Pontiac.

Committees appointed: Executive Willis M. Brewer, Mrs. R. B. Hewitt, Mrs. Jean Ayers, Cass Gittins, and Fred Beardsley.  
Seal Sale: Mrs. R. B. Hewitt, Joe Haas, Mrs. A. W. Wilson, Chas. Mers, and Burton Daugherty.  
Project: Dr. C. J. Sutherland, Mrs. W. B. Wilders, E. J. Lederle, and Ruby Rogers.  
Organization: R. D. Tyler, F. L. Doty, Wm. Leese, Dr. J. J. Murphy, and Mrs. W. H. Jensen.

## LITTLE DAVID LOST? WELL, HARDLY, HE SAYS

Recently, Little David Kelebut, four year old son of Mr. and Mrs. off to play with some of his companions, wandered into the shadows of evening kept growing darker and darker until darkness descended everywhere.

Mr. and Mrs. Kelebut, leaving the house unlighted, went out into the street to call their little son. After they had called several times, and no response was heard, the parents became somewhat alarmed and started, assisted by some near neighbors, on a real search. Frantically searching everywhere and with no success, the aid of the police was finally asked. An arduous search continued until nearly 10:30 P. M. with no further success.

At last, in despair, the parents of the missing child, went back to their home, not knowing what to do. They entered the house, turned on the lights, and started, what they thought a useless endeavor to find the child in the house. Chairs, tables, and beds were looked under, behind, and moved, but still no happy child's face greeted the panic stricken parents.

Finally, the davenport was moved, and there to the joy of the fond mother and father, they beheld David, fast asleep under the davenport.

It seems that David had only too readily responded to his parents' first call, had entered the house unnoticed, and being afraid of the dark, had crept under the davenport where he, exhausted from hard play, fell asleep, innocent of all the anguish he had caused his parents, by his prompt obedience.

Telephone your Classified Ads to The Eccentric before Wednesday evening.

## STEEL PILLARS AID DRIVERS OF DODGES

Are Successful For Twelve Years  
Birmingham Dealer  
Declares

Dodge Brothers, Inc., pioneer builders of all-steel body construction of motor cars, have proved conclusively that the all-steel body is to supplant the old style wooden body, in the opinion of C. T. Evans, of Evans-Jackson Motor Co., Birmingham, dealer for Dodge Brothers products.

"It is nearly 12 years ago that Dodge Brothers conceived the idea of an all-steel body in their touring cars," says Mr. Evans. "The public reception of this radical departure from the wooden bodies then in vogue, was instantaneous. Today every Dodge Brothers passenger car has an all-steel body."

"Dodge Brothers use steel pillars throughout the car, creating greater vision and safety to the motorists. It stands to reason that in case of accident an all-steel body, reinforced with steel throughout, provides a greater degree of safety than was possible with wood construction."

"From the very beginning of their manufacturing experience, Dodge Brothers clearly saw that economical, rapid and uniform volume production could only be secured by the extensive use of steel in place of wood. The sales of Dodge Brothers motor cars throughout the country is indicative of approval of the all-steel bodies which give the maximum of strength and rigidity per pound weight."

"We have found by investigation of accidents in which Dodge Brothers motor cars have been damaged, that the loss was a small fraction of what it would have been with the wooden construction. The all-steel body construction was found by railroad engineers to be desirable for coaches to minimize the death toll in railroad accidents. If the use of steel is essential on railroads then it is essential in the construction of motor cars, for a great percentage of the traveling that was formerly done on the rails is now done with the automobile."

"The parts bearing a major strain are welded and riveted, giving the greatest of rigidity. All Dodge Brothers bodies are assembled for permanent use and are not assembled in other parts of the country."

Every advertisement in the Eccentric is a message from the merchant to you, folks. We want you to see a theater you read the theater announcements to see if you'll like it. You see, we read what local merchants have to offer in each issue of the Eccentric. It is the merchant's message brought to your very fireplace!

"THE TWINS" are now prepared to assist in your selection of Lamp Shades and will be glad to assist you with suggestions for color scheme, design and material.

Jack and Jill Gift Shop  
Room 515  
16525 Woodward Ave.  
HIGHLAND PARK, MICH.

## D. A. BELL APPOINTED PACKING CO. OFFICIAL

David A. Bell, of Oakland Avenue, at one time a member of the village commission here and partner in the meat market business with Robert Y. Moore, recently was appointed secretary and general manager of the Pontiac Packing Co. Mr. Bell went with the company three years ago in the capacity of sales manager.

which does more than a million dollars worth of business annually, is providing excellent grounds for con-

gratulations from his many friends in Birmingham and other parts of the county.

## LARGE LOT!

235 1/2 x 277

In the Village of Birmingham, on rolling land, with several full grown trees, in a very choice location. A very good buy for cash.  
**GEO. L. WEYHING - 500 Rivenoak Ave.**  
Phone Birmingham 493-J after 7 P. M.

# The G-BOY

## Scores a Genuine Triumph

The enthusiastic welcome given the G-BOY, Graham Brothers new one-ton truck, has established this fact:

It is recognized at once as a real—a major—contribution to commercial haulage.

So great was the need for a light truck to transport the average load swiftly, easily, safely—yet at lower cost than ever before—that Graham Brothers newest product has scored an immediate triumph.

The revolutionary improvement in balance effected by a new system of weight distribution profoundly impresses every man who has ever had experience with the haulage problem.

The compact wheel base, ease of handling, generous body capacity, the advantages of the ever-dependable and always economical Dodge Brothers engine—all these important factors enter into the G-BOY'S marked success.

And then the price! So low that only Graham Brothers, the largest exclusive truck makers, with huge buying and building capacity, could possibly achieve it.

For the average load there is nothing like the G-BOY. We are eager to show you this latest contribution to commercial haulage.

## EVANS-JACKSON MOTOR CO.

119 South Woodward Avenue  
Birmingham, Mich.  
Phone 301

# GRAHAM BROTHERS TRUCKS

SOLD BY DODGE BROTHERS  
DEALERS EVERYWHERE

## WANT ADS PAY

# FLY TOX and LAC-A-FLY Kills Flies

One-half Pts., Pts., Qts., Gals.

QUALITY  
WDC  
WILSON DRUG CO.  
104 SOUTH WOODWARD  
BIRMINGHAM, MICH.  
PHONE 35  
PRESCRIPTION SERVICE

## Covehurst

ALL YEAR Lake Home sites, where you can enjoy the seclusion of the country without isolation. Located 10 miles from Birmingham, out Wider Woodward Avenue, on Loon Lake. All sports at hand.

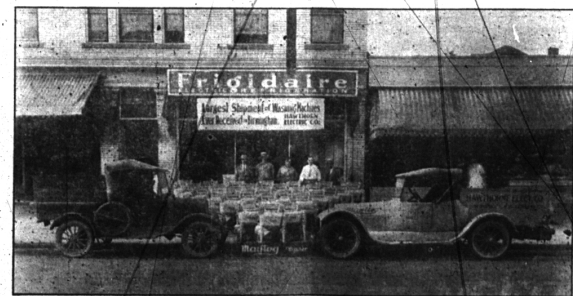
Also announcing our **Bridge Lake Subdivision**, only 16 miles from Birmingham, where you can purchase lots as low as \$750.00.

**Bingham, Sparks & Bingham**  
REAL ESTATE AND INSURANCE  
132 S. Woodward Ave. Telephone 985

## A Phone Call Will Bring The MAYTAG WASHER To Your Home For A Free Trial

## Another Shipment Has Arrived

## Last Shipment Sold Out in Less than 30 Days



## Hawthorne Electric Co.

124 W. Maple Phone 299

A machine or more a day has been our average delivery. We have delivered as high as twelve machines in one day. Last Monday we delivered six machines.

## Wash With It NEXT WASHDAY OR ANY DAY YOU WISH

No obligation at all. We want you to try this super-washer which women themselves have named "The Miracle of Monday."

## 9 Outstanding Maytag Features 9

1. Washes faster.
2. Washes cleaner.
3. Largest hourly capacity. Tub holds 21 gallons.
4. Most compact washer made—takes floor space only 25 inches square.
5. Cast aluminum tub—can't warp, rot, swell, split or corrode—cleans itself.
6. Easily adjusted to your height.
7. Clothes can be put in or taken out with the washer running.
8. All metal wringer. Self adjusting. Instant tension release.
9. Electric motor for wired homes—Gasoline motor where no electricity is available.

## 9 Reasons For World Leadership 9

Gather together the biggest and dirtiest wash you can find. Then—call for a Maytag Gyroform Washer. Find out for yourself how the Maytag's exclusive principle of water turbulence washes twice as fast as others;—how you can average 50 pounds of clothes per hour and not have to hand-rub your cuffs, collars and wristbands;—how you can wash a tubful of ordinary clothes in 3 to 7 minutes. We want you to see for yourself how carefully it handles dainty things.

If it doesn't **SELL ITSELF** on its self-cleaning cast aluminum tub, and its patented self-adjusting, instantaneous tension-release wringer—don't keep it!

If it doesn't **SELL ITSELF** on its unsurpassed nicety in washing chiffons, georgettes and all other dainty things—don't keep it!

If it doesn't **SELL ITSELF** on its super-speed washing performance—don't keep it!

If it doesn't **SELL ITSELF** on the way it cleans heavy garments, work clothes and grimy overalls—don't keep it!

If it doesn't **SELL ITSELF** on its complete elimination of hand rubbing—even of wristbands, cuffs and collars—don't keep it!