

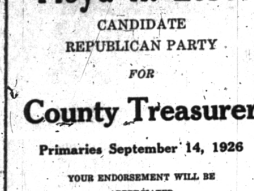
POLITICAL ADVERTISEMENT

POLITICAL ADVERTISEMENT



Bert F. Griffin
CANDIDATE
Republican Party
FOR
Register of Deeds
Oakland County
PRIMARIES
SEPTEMBER 14, 1926
May I have Your Support? It Will Be Appreciated.

Floyd H. Losee
CANDIDATE
REPUBLICAN PARTY
FOR
County Treasurer
Primaries September 14, 1926
YOUR ENDORSEMENT WILL BE APPRECIATED



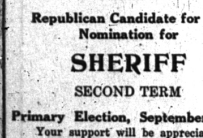
C. D. Underwood
Prosecuting Attorney
Oakland County
for Second Term
REPUBLICAN TICKET
Primary Election, Tuesday
Sept. 14, 1926
YOUR SUPPORT WILL BE APPRECIATED



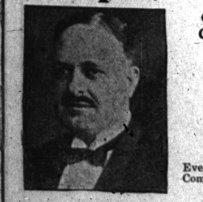
Earl L. Phillips
REPUBLICAN CANDIDATE FOR
Circuit Court Commissioner
OAKLAND COUNTY PRIMARY
ELECTION
Tuesday, September 14, 1926

The office of Circuit Court Commissioner in Oakland County has, because of the unusual expansion of real estate, become an important one. My experience as a practicing attorney qualifies me, I believe, to fulfill the duties of the office. As candidate for one of the two offices of Circuit Court Commissioner, I shall greatly appreciate the support given me.

Frank Schram
SHERIFF
Republican Candidate for the
Nomination for
SHERIFF
SECOND TERM
Primary Election, September 14th
Your support will be appreciated



Ralph T. Keeling
Candidate Republican Ticket for
Circuit Court Commissioner
OAKLAND COUNTY
PRIMARY ELECTION
Tuesday, Sept. 14, 1926



Every voter is entitled to vote for two Commissioners. I will greatly appreciate one of your votes.

Donald C. Porritt
Candidate for
Republican Nomination for
Prosecuting Attorney
OAKLAND COUNTY
Primary Election Tuesday,
Sept. 14, 1926
Three Years' Experience as Assistant
Prosecuting Attorney
Strict Enforcement of All Laws. Free From
Politics and Faction



FOUR AMENDMENTS FACE STATE VOTERS FALL ELECTIONS

Three Articles of Basic Law
Will Be Up For Consideration

PLAN RAISE OF SALARIES

Four proposed amendments to the state constitution, changing three articles of the Michigan basic law, are to be presented to voters in November. Only one amendment, that of increasing pay of legislators from \$300 a session to \$1,200, is expected to be of major public interest.

The proposal to raise the compensation of members of the law making body was put up to the people at the 1925 session after members of both houses had voiced opposition to "raising their own pay."

On three occasions since 1917 the voters have refused to approve proposals to increase salaries of state officers and for that reason the amendment to be voted on in November is regarded doubtful of passage. The other amendments to be voted on are:

1.—A proposal to allow sheriffs to hold office for more than two consecutive terms of two years. This restriction formerly applied to certain other county officers and was removed. The reason it was inserted in the constitution originally according to records, was to insure a "housecleaning" every four years—in other words to bring to light any corruption which might have remained unexposed if the same office holder were re-elected. Proponents of the amendment to remove the restriction contend, however, that the precaution is unnecessary and that in many instances it prevents retention of a valuable officer.

2.—A proposal to allow two or more municipalities to unite in forming "metropolitan districts" for the purpose of issuing bonds and establishing public utilities. This is a plan intended primarily to permit suburbs to join the city of Detroit in water, sewerage disposal and transportation projects. The amendment specifies, however, that the voters concerned must approve any such merger.

3.—Provision for allowing municipalities to condemn more land than is necessary for establishing public improvements. It is intended that the enactment to allow cities to profit when property values are increased by reason of public improvements. If the amendment passes, a city can purchase an entire lot when only a narrow strip on one side is needed for street widening or paving purposes. The remainder of the lot could then be sold possibly for more than its cost originally.

PRIMARY ELECTION
Notice is hereby given that a General Primary Election will be held in the Township of Bloomfield, County of Oakland, State of Michigan, on **TUESDAY, SEPTEMBER 14, A. D. 1926**, at 10 o'clock, A. M., for the purpose of electing the following officers, viz.:
STATE.—One candidate for Governor; one candidate for Lieutenant Governor.
CONGRESSIONAL.—One candidate for Representative in Congress for the Congressional district of which said Township forms a part.
LEGISLATIVE.—One candidate for Senator in the State Legislature for the Senatorial district of which said Township forms a part; one candidate for Representative in the State Legislature for the Legislative district of which said Township forms a part.
COUNTY.—Also candidates for the following county offices, viz.: Sheriff, County Clerk, County Treasurer, Register of Deeds, Prosecuting Attorney, two Circuit Court Commissioners; one County Drain Commissioner; one Surveyor; two Coroners; one County Road Commissioner.

DELEGATES TO COUNTY CONVENTIONS
There shall also be elected at said primary, by direct vote of the registered and qualified voters of each political party in each county, as many delegates in each township, ward or precinct as may be, as such political party in each township, ward or precinct shall be elected by the call issued by the county committee of such political party within one year for the purpose of electing delegates to the state convention called for the purpose of nominating candidates for state officers, in case of any vacancy in any delegation to the county convention, such vacancy shall be filled by the delegates present from the ward or township in which the vacancy occurred.

The state central committee of each political party shall, at least thirty days before the September primary herein provided for, cause to be forwarded by mail to the chairman of the county committee of each party a copy of the call for the Fall state convention showing the number of delegates to which such county shall be entitled in the state convention; such party and the said state central committee shall apportion such delegates to the several counties in proportion and according to the number of votes cast for the candidates of such party for secretary of state in each of said counties, respectively, at the last preceding November election.

The names of the candidates for delegate to the county convention shall not be printed upon the official primary ballot, but one or more such names may be placed on such ballot by printed or written statement thereon by the voter, or the names may be written in by the voter.
Delegates to the Fall county convention shall be elected by election precincts and the county clerk shall notify by mail each precinct clerk as such delegates.
The required number of electors to receive the ballot number of electors for delegates to the Fall county convention of any political party, shall be determined by the board of primary election inspectors to be elected.
The board of primary election inspectors shall certify to the county clerk the names of the electors so elected, as delegates, naming the political party upon whose ballots such electors were elected. The county clerk shall notify each delegate so elected of his election as such delegate, and shall deliver to the chairman of the county committee of each political party of the electors so elected by such political party as delegates to the Fall county convention.
SUGGESTIONS RELATIVE TO VOTING.
SEPARATE BALLOTS
Each political party will be provided. The elector must make a ballot and in marking the left of the name of each candidate for whom he wishes to vote, and in the case of a candidate except where two or more names are to be nominated, in which case he should vote for two or the number to be nominated.

NOTICE RELATIVE TO OPENING AND CLOSING OF THE POLLS
Act 381—Part IV—Chap. VIII, Sec. 21. On the day of any election the polls shall be opened at seven o'clock in the morning, or as soon thereafter as may be, and shall be continued open until five o'clock in the afternoon and no longer. PROVIDED, That in townships the board of inspectors of elections may, in the discretion, adjourn the election day to the following day, and the polls shall be opened at seven o'clock in the morning, or as soon thereafter as may be, and shall be continued open until five o'clock in the afternoon and no longer. PROVIDED, That in townships the board of inspectors of elections may, in the discretion, adjourn the election day to the following day, and the polls shall be opened at seven o'clock in the morning, or as soon thereafter as may be, and shall be continued open until five o'clock in the afternoon and no longer.

Harris Elected Head Of Republican Club

Oakland County Republicans have completed preliminary organization of a "Greenback for Governor club" in Oakland County, according to an announcement of James H. Harris, Superintendent of schools at Pontiac, who has been elected president. The purpose of the organization according to Mr. Harris is to disseminate information regarding Governor Greenback. Membership in the organization is open to any Oakland County Republican.

"Few voters are in a position to ascertain the true facts for themselves and we propose to present the Governor's record so that everyone may cast an intelligent ballot," Mr. Harris said.

RELAFORD CANDIDATE FOR CORONER'S POST

Royal Oak Undertaker Says One Is Needed in South Of County.

John P. Relaford, Royal Oak undertaker, has announced his candidacy for the office of county coroner and will be listed on the Republican ballot in the primaries, September 14.

He was born in Cape Vincent, 1875, and moved from there during his youth. He was with Knapp & Smith, undertakers in Owosso for three years and then entered business for himself. He came to Royal Oak in 1915 and has remained there since.

In seeking election, Mr. Relaford says he is fully qualified for the position and that he will at all times fill the duties of the office conscientiously. "I believe it is only right that there should be a coroner in the southern part of the county," he said. "I feel that I am qualified to hold that post. Tell the people of Oakland County that if they elect me to the position they will never have regret."

REAL ESTATE TRANSFERS HIT NEW HIGH MARK

Approximately 900,000 transfers or sales of real estate were recorded in the principal cities of the United States during the first six months of 1926, according to a report of the research department of the Greenbaum Sons Investment Co., of Chicago. This constituted a record never before equalled.

Transfers during the corresponding period of 1925 numbered 800,000. Figures for other years were: 1924, 840,000; 1923, 830,000; 1922, 900,000; and 1921, 550,000.

A very large proportion of the sales recorded in the last three years were of new dwellings, apartments, and hotels which were constructed with money obtained from the sale of real estate bonds, the company reports.

Police arrested 87 teachers of hypnotism at Budapest in enforcing a recent government edict against the "black art."

Brazilian naturalists have found a species of large spiders that trap and devour small birds.

Inspectors shall, in their discretion, adjourn the polls at 12:00 o'clock, noon, for one hour.

JAMES V. RAYLEY,
Clerk of Board of Supervisors.
17-18-19

POLITICAL ADVERTISEMENT

Maurice E. Baldwin
REPUBLICAN CANDIDATE
FOR SECOND TERM
For the Nomination for
County Surveyor
PRIMARIES, SEPTEMBER 14th
YOUR SUPPORT WILL BE APPRECIATED

J. L. Stephenson
Registered Civil Engineer
and Surveyor
REPUBLICAN CANDIDATE
For County Surveyor
Primary Election, Sept. 14, 1926
Your Vote Solicited
— FOR —
Courtesy - Efficiency - Modern Methods
Assistants of Same Standards

O. C. Farmer
Republican Candidate
for
Coroner
To the Voters
of Oakland County
Noting the large number of people in Oakland County who signed my petition and in appreciation of the confidence the voters of Oakland County have rendered placed in me, and believing that my past experience has prepared me to render a service greater than ever before, I respectfully solicit your support at the primaries September 14th.
O. C. FARMER.

George B. Hartrick
Republican Candidate
for Re-election
Circuit Court Commissioner
OAKLAND COUNTY
Primary, Tuesday, Sept. 14
Two Commissioners are to be elected. I am the only candidate from the County, outside of the City of Pontiac.
Fairness, convenience and custom entitle the balance of the county to one Commissioner, in addition to the fact that more than one-half of the work of the Circuit Court Commissioner comes from this part of the County.
Your vote will be appreciated.

George B. Hartrick
Republican Candidate
for Re-election
Circuit Court Commissioner
OAKLAND COUNTY
Primary, Tuesday, Sept. 14
Two Commissioners are to be elected. I am the only candidate from the County, outside of the City of Pontiac.
Fairness, convenience and custom entitle the balance of the county to one Commissioner, in addition to the fact that more than one-half of the work of the Circuit Court Commissioner comes from this part of the County.
Your vote will be appreciated.

George B. Hartrick
Republican Candidate
for Re-election
Circuit Court Commissioner
OAKLAND COUNTY
Primary, Tuesday, Sept. 14
Two Commissioners are to be elected. I am the only candidate from the County, outside of the City of Pontiac.
Fairness, convenience and custom entitle the balance of the county to one Commissioner, in addition to the fact that more than one-half of the work of the Circuit Court Commissioner comes from this part of the County.
Your vote will be appreciated.

George B. Hartrick
Republican Candidate
for Re-election
Circuit Court Commissioner
OAKLAND COUNTY
Primary, Tuesday, Sept. 14
Two Commissioners are to be elected. I am the only candidate from the County, outside of the City of Pontiac.
Fairness, convenience and custom entitle the balance of the county to one Commissioner, in addition to the fact that more than one-half of the work of the Circuit Court Commissioner comes from this part of the County.
Your vote will be appreciated.

George B. Hartrick
Republican Candidate
for Re-election
Circuit Court Commissioner
OAKLAND COUNTY
Primary, Tuesday, Sept. 14
Two Commissioners are to be elected. I am the only candidate from the County, outside of the City of Pontiac.
Fairness, convenience and custom entitle the balance of the county to one Commissioner, in addition to the fact that more than one-half of the work of the Circuit Court Commissioner comes from this part of the County.
Your vote will be appreciated.

George B. Hartrick
Republican Candidate
for Re-election
Circuit Court Commissioner
OAKLAND COUNTY
Primary, Tuesday, Sept. 14
Two Commissioners are to be elected. I am the only candidate from the County, outside of the City of Pontiac.
Fairness, convenience and custom entitle the balance of the county to one Commissioner, in addition to the fact that more than one-half of the work of the Circuit Court Commissioner comes from this part of the County.
Your vote will be appreciated.

George B. Hartrick
Republican Candidate
for Re-election
Circuit Court Commissioner
OAKLAND COUNTY
Primary, Tuesday, Sept. 14
Two Commissioners are to be elected. I am the only candidate from the County, outside of the City of Pontiac.
Fairness, convenience and custom entitle the balance of the county to one Commissioner, in addition to the fact that more than one-half of the work of the Circuit Court Commissioner comes from this part of the County.
Your vote will be appreciated.

George B. Hartrick
Republican Candidate
for Re-election
Circuit Court Commissioner
OAKLAND COUNTY
Primary, Tuesday, Sept. 14
Two Commissioners are to be elected. I am the only candidate from the County, outside of the City of Pontiac.
Fairness, convenience and custom entitle the balance of the county to one Commissioner, in addition to the fact that more than one-half of the work of the Circuit Court Commissioner comes from this part of the County.
Your vote will be appreciated.

George B. Hartrick
Republican Candidate
for Re-election
Circuit Court Commissioner
OAKLAND COUNTY
Primary, Tuesday, Sept. 14
Two Commissioners are to be elected. I am the only candidate from the County, outside of the City of Pontiac.
Fairness, convenience and custom entitle the balance of the county to one Commissioner, in addition to the fact that more than one-half of the work of the Circuit Court Commissioner comes from this part of the County.
Your vote will be appreciated.

George B. Hartrick
Republican Candidate
for Re-election
Circuit Court Commissioner
OAKLAND COUNTY
Primary, Tuesday, Sept. 14
Two Commissioners are to be elected. I am the only candidate from the County, outside of the City of Pontiac.
Fairness, convenience and custom entitle the balance of the county to one Commissioner, in addition to the fact that more than one-half of the work of the Circuit Court Commissioner comes from this part of the County.
Your vote will be appreciated.

George B. Hartrick
Republican Candidate
for Re-election
Circuit Court Commissioner
OAKLAND COUNTY
Primary, Tuesday, Sept. 14
Two Commissioners are to be elected. I am the only candidate from the County, outside of the City of Pontiac.
Fairness, convenience and custom entitle the balance of the county to one Commissioner, in addition to the fact that more than one-half of the work of the Circuit Court Commissioner comes from this part of the County.
Your vote will be appreciated.

George B. Hartrick
Republican Candidate
for Re-election
Circuit Court Commissioner
OAKLAND COUNTY
Primary, Tuesday, Sept. 14
Two Commissioners are to be elected. I am the only candidate from the County, outside of the City of Pontiac.
Fairness, convenience and custom entitle the balance of the county to one Commissioner, in addition to the fact that more than one-half of the work of the Circuit Court Commissioner comes from this part of the County.
Your vote will be appreciated.

George B. Hartrick
Republican Candidate
for Re-election
Circuit Court Commissioner
OAKLAND COUNTY
Primary, Tuesday, Sept. 14
Two Commissioners are to be elected. I am the only candidate from the County, outside of the City of Pontiac.
Fairness, convenience and custom entitle the balance of the county to one Commissioner, in addition to the fact that more than one-half of the work of the Circuit Court Commissioner comes from this part of the County.
Your vote will be appreciated.

George B. Hartrick
Republican Candidate
for Re-election
Circuit Court Commissioner
OAKLAND COUNTY
Primary, Tuesday, Sept. 14
Two Commissioners are to be elected. I am the only candidate from the County, outside of the City of Pontiac.
Fairness, convenience and custom entitle the balance of the county to one Commissioner, in addition to the fact that more than one-half of the work of the Circuit Court Commissioner comes from this part of the County.
Your vote will be appreciated.

GREEN HURLS BACK REACTIONARY CHARGES

Calls Greenback's State Fair Man-
dates Unprogressive; Recalls
Bull Moose.

"Governor Greenback has accused me of being a reactionary," Fred W. Green, candidate for the Republican nomination for governor, said Friday night in addressing the Northeast Republican club at the Division school in Detroit. "But if his action in driving such men as John Edickoff, John Haggerty and Oscar Webber from the state government and retaining such individuals as Abe Asher and John Baird is progressive, I want to continue reactionary."

Edickoff, Haggerty and Webber were three members of the old state board. For years they have been prominent civic and business leaders in Detroit. Asher, a state oil inspector, has been active in trying to line up the east side Negro vote for the governor, while Baird, state conservation commissioner, at present is engaged in a verbal controversy with former Representative Joseph W. Fordney in a tilt for Saginaw county votes.

Recalls 1912 Campaign.
Green went on to review the reaction and progressivism of himself and the governor.

"I can recall," he said, "the Bull Moose campaign of 1912. Then Mr. Greenback was leading the pork barrel campaign of Taft in Wayne county. I did everything within my power to further the campaign of Roosevelt."

"I'm willing to put my record as a reactionary alongside of the governor's any time," he continued. Another interested group of several hundred Detroit workers heard Green at noon. Like all of the noon day factory meetings which have preceded it, the friendliness of the crowd at the Briggs Mack avenue plant was apparent.

Green's talk contained no bombastic promises. It was couched in homely language, and was mostly about himself, his climb from a daily wage earner to operator of six factories, and his record in private and public life.

Is Friend Of Labor.
"In this campaign," he said, "some of my opponents have tried to develop ill will toward me by saying that I was unfriendly to labor. Such a story is hardly worth my attention for I know it will prove a boomerang. My interest in labor's welfare is too well established to be trammelled by malicious whispering."

STATE OF MICHIGAN—In the Circuit Court for the County of Oakland, In Chancery.
Lloyd A. Gifford, Plaintiff, vs. Clarence G. Morton, Defendant.

In pursuance of a decree of the Circuit Court for the County of Oakland made and entered on the first day of June, A. D. 1926, in the above entitled cause, & the substance of which said decree is that the County of Oakland, shall sell at public auction or vendue to the highest bidder at the front door of the court house in the City of Pontiac, in the County of Oakland, on the twenty-seventh day of September, A. D. 1926, at 1:00 o'clock, in the forenoon, of that day, these certain lands and premises situate in the City of Royal Oak, and described as:

All those certain pieces or parcels of land situated in the City of Royal Oak, Oakland County, Michigan, and described as lot one hundred thirty (133), Wardsville Subdivision, as the same is recorded plat thereof as recorded in the Oakland County Register of Deeds Office.

GEORGE B. HARTTRICK,
Circuit Court Commissioner.

POLITICAL ADVERTISEMENT

Maurice E. Baldwin
REPUBLICAN CANDIDATE
FOR SECOND TERM
For the Nomination for
County Surveyor
PRIMARIES, SEPTEMBER 14th
YOUR SUPPORT WILL BE APPRECIATED

J. L. Stephenson
Registered Civil Engineer
and Surveyor
REPUBLICAN CANDIDATE
For County Surveyor
Primary Election, Sept. 14, 1926
Your Vote Solicited
— FOR —
Courtesy - Efficiency - Modern Methods
Assistants of Same Standards

O. C. Farmer
Republican Candidate
for
Coroner
To the Voters
of Oakland County
Noting the large number of people in Oakland County who signed my petition and in appreciation of the confidence the voters of Oakland County have rendered placed in me, and believing that my past experience has prepared me to render a service greater than ever before, I respectfully solicit your support at the primaries September 14th.
O. C. FARMER.

George B. Hartrick
Republican Candidate
for Re-election
Circuit Court Commissioner
OAKLAND COUNTY
Primary, Tuesday, Sept. 14
Two Commissioners are to be elected. I am the only candidate from the County, outside of the City of Pontiac.
Fairness, convenience and custom entitle the balance of the county to one Commissioner, in addition to the fact that more than one-half of the work of the Circuit Court Commissioner comes from this part of the County.
Your vote will be appreciated.

George B. Hartrick
Republican Candidate
for Re-election
Circuit Court Commissioner
OAKLAND COUNTY
Primary, Tuesday, Sept. 14
Two Commissioners are to be elected. I am the only candidate from the County, outside of the City of Pontiac.
Fairness, convenience and custom entitle the balance of the county to one Commissioner, in addition to the fact that more than one-half of the work of the Circuit Court Commissioner comes from this part of the County.
Your vote will be appreciated.

George B. Hartrick
Republican Candidate
for Re-election
Circuit Court Commissioner
OAKLAND COUNTY
Primary, Tuesday, Sept. 14
Two Commissioners are to be elected. I am the only candidate from the County, outside of the City of Pontiac.
Fairness, convenience and custom entitle the balance of the county to one Commissioner, in addition to the fact that more than one-half of the work of the Circuit Court Commissioner comes from this part of the County.
Your vote will be appreciated.

George B. Hartrick
Republican Candidate
for Re-election
Circuit Court Commissioner
OAKLAND COUNTY
Primary, Tuesday, Sept. 14
Two Commissioners are to be elected. I am the only candidate from the County, outside of the City of Pontiac.
Fairness, convenience and custom entitle the balance of the county to one Commissioner, in addition to the fact that more than one-half of the work of the Circuit Court Commissioner comes from this part of the County.
Your vote will be appreciated.

George B. Hartrick
Republican Candidate
for Re-election
Circuit Court Commissioner
OAKLAND COUNTY
Primary, Tuesday, Sept. 14
Two Commissioners are to be elected. I am the only candidate from the County, outside of the City of Pontiac.
Fairness, convenience and custom entitle the balance of the county to one Commissioner, in addition to the fact that more than one-half of the work of the Circuit Court Commissioner comes from this part of the County.
Your vote will be appreciated.

George B. Hartrick
Republican Candidate
for Re-election
Circuit Court Commissioner
OAKLAND COUNTY
Primary, Tuesday, Sept. 14
Two Commissioners are to be elected. I am the only candidate from the County, outside of the City of Pontiac.
Fairness, convenience and custom entitle the balance of the county to one Commissioner, in addition to the fact that more than one-half of the work of the Circuit Court Commissioner comes from this part of the County.
Your vote will be appreciated.

George B. Hartrick
Republican Candidate
for Re-election
Circuit Court Commissioner
OAKLAND COUNTY
Primary, Tuesday, Sept. 14
Two Commissioners are to be elected. I am the only candidate from the County, outside of the City of Pontiac.
Fairness, convenience and custom entitle the balance of the county to one Commissioner, in addition to the fact that more than one-half of the work of the Circuit Court Commissioner comes from this part of the County.
Your vote will be appreciated.

George B. Hartrick
Republican Candidate
for Re-election
Circuit Court Commissioner
OAKLAND COUNTY
Primary, Tuesday, Sept. 14
Two Commissioners are to be elected. I am the only candidate from the County, outside of the City of Pontiac.
Fairness, convenience and custom entitle the balance of the county to one Commissioner, in addition to the fact that more than one-half of the work of the Circuit Court Commissioner comes from this part of the County.
Your vote will be appreciated.

George B. Hartrick
Republican Candidate
for Re-election
Circuit Court Commissioner
OAKLAND COUNTY
Primary, Tuesday, Sept. 14
Two Commissioners are to be elected. I am the only candidate from the County, outside of the City of Pontiac.
Fairness, convenience and custom entitle the balance of the county to one Commissioner, in addition to the fact that more than one-half of the work of the Circuit Court Commissioner comes from this part of the County.
Your vote will be appreciated.

George B. Hartrick
Republican Candidate
for Re-election
Circuit Court Commissioner
OAKLAND COUNTY
Primary, Tuesday, Sept. 14
Two Commissioners are to be elected. I am the only candidate from the County, outside of the City of Pontiac.
Fairness, convenience and custom entitle the balance of the county to one Commissioner, in addition to the fact that more than one-half of the work of the Circuit Court Commissioner comes from this part of the County.
Your vote will be appreciated.

George B. Hartrick
Republican Candidate
for Re-election
Circuit Court Commissioner
OAKLAND COUNTY
Primary, Tuesday, Sept. 14
Two Commissioners are to be elected. I am the only candidate from the County, outside of the City of Pontiac.
Fairness, convenience and custom entitle the balance of the county to one Commissioner, in addition to the fact that more than one-half of the work of the Circuit Court Commissioner comes from this part of the County.
Your vote will be appreciated.

George B. Hartrick
Republican Candidate
for Re-election
Circuit Court Commissioner
OAKLAND COUNTY
Primary, Tuesday, Sept. 14
Two Commissioners are to be elected. I am the only candidate from the County, outside of the City of Pontiac.
Fairness, convenience and custom entitle the balance of the county to one Commissioner, in addition to the fact that more than one-half of the work of the Circuit Court Commissioner comes from this part of the County.
Your vote will be appreciated.

George B. Hartrick
Republican Candidate
for Re-election
Circuit Court Commissioner
OAKLAND COUNTY
Primary, Tuesday, Sept. 14
Two Commissioners are to be elected. I am the only candidate from the County, outside of the City of Pontiac.
Fairness, convenience and custom entitle the balance of the county to one Commissioner, in addition to the fact that more than one-half of the work of the Circuit Court Commissioner comes from this part of the County.
Your vote will be appreciated.

George B. Hartrick
Republican Candidate
for Re-election
Circuit Court Commissioner
OAKLAND COUNTY
Primary, Tuesday, Sept. 14
Two Commissioners are to be elected. I am the only candidate from the County, outside of the City of Pontiac.
Fairness, convenience and custom entitle the balance of the county to one Commissioner, in addition to the fact that more than one-half of the work of the Circuit Court Commissioner comes from this part of the County.
Your vote will be appreciated.

George B. Hartrick
Republican Candidate
for Re-election
Circuit Court Commissioner
OAKLAND COUNTY
Primary, Tuesday, Sept. 14
Two Commissioners are to be elected. I am the only candidate from the County, outside of the City of Pontiac.
Fairness, convenience and custom entitle the balance of the county to one Commissioner, in addition to the fact that more than one-half of the work of the Circuit Court Commissioner comes from this part of the County.
Your vote will be appreciated.

George B. Hartrick
Republican Candidate
for Re-election
Circuit Court Commissioner
OAKLAND COUNTY
Primary, Tuesday, Sept. 14
Two Commissioners are to be elected. I am the only candidate from the County, outside of the City of Pontiac.
Fairness, convenience and custom entitle the balance of the county to one Commissioner, in addition to the fact that more than one-half of the work of the Circuit Court Commissioner comes from this part of the County.
Your vote will be appreciated.

George B. Hartrick
Republican Candidate
for Re-election
Circuit Court Commissioner
OAKLAND COUNTY
Primary, Tuesday, Sept. 14
Two Commissioners are to be elected. I am the only candidate from the County, outside of the City of Pontiac.
Fairness, convenience and custom entitle the balance of the county to one Commissioner, in addition to the fact that more than one-half of the work of the Circuit Court Commissioner comes from this part of the County.
Your vote will be appreciated.

George B. Hartrick
Republican Candidate
for Re-election
Circuit Court Commissioner
OAKLAND COUNTY
Primary, Tuesday, Sept. 14
Two Commissioners are to be elected. I am the only candidate from the County, outside of the City of Pontiac.
Fairness, convenience and custom entitle the balance of the county to one Commissioner, in addition to the fact that more than one-half of the work of the Circuit Court Commissioner comes from this part of the County.
Your vote will be appreciated.

George B. Hartrick
Republican Candidate
for Re-election
Circuit Court Commissioner
OAKLAND COUNTY
Primary, Tuesday, Sept. 14
Two Commissioners are to be elected. I am the only candidate from the County, outside of the City of Pontiac.
Fairness, convenience and custom entitle the balance of the county to one Commissioner, in addition to the fact that more than one-half of the work of the Circuit Court Commissioner comes from this part of the County.
Your vote will be appreciated.

George B. Hartrick
Republican Candidate
for Re-election
Circuit Court Commissioner
OAKLAND COUNTY
Primary, Tuesday, Sept. 14
Two Commissioners are to be elected. I am the only candidate from the County, outside of the City of Pontiac.
Fairness, convenience and custom entitle the balance of the county to one Commissioner, in addition to the fact that more than one-half of the work of the Circuit Court Commissioner comes from this part of the County.
Your vote will be appreciated.

George B. Hartrick
Republican Candidate
for Re-election
Circuit Court Commissioner
OAKLAND COUNTY
Primary, Tuesday, Sept. 14
Two Commissioners are to be elected. I am the only candidate from the County, outside of the City of Pontiac.
Fairness, convenience and custom entitle the balance of the county to one Commissioner, in addition to the fact that more than one-half of the work of the Circuit Court Commissioner comes from this part of the County.
Your vote will be appreciated.

George B. Hartrick
Republican Candidate
for Re-election
Circuit Court Commissioner
OAKLAND COUNTY
Primary, Tuesday, Sept. 14
Two Commissioners are to be elected. I am the only candidate from the County, outside of the City of Pontiac.
Fairness, convenience and custom entitle the balance of the county to one Commissioner, in addition to the fact that more than one-half of the work of the Circuit Court Commissioner comes from this part of the County.
Your vote will be appreciated.